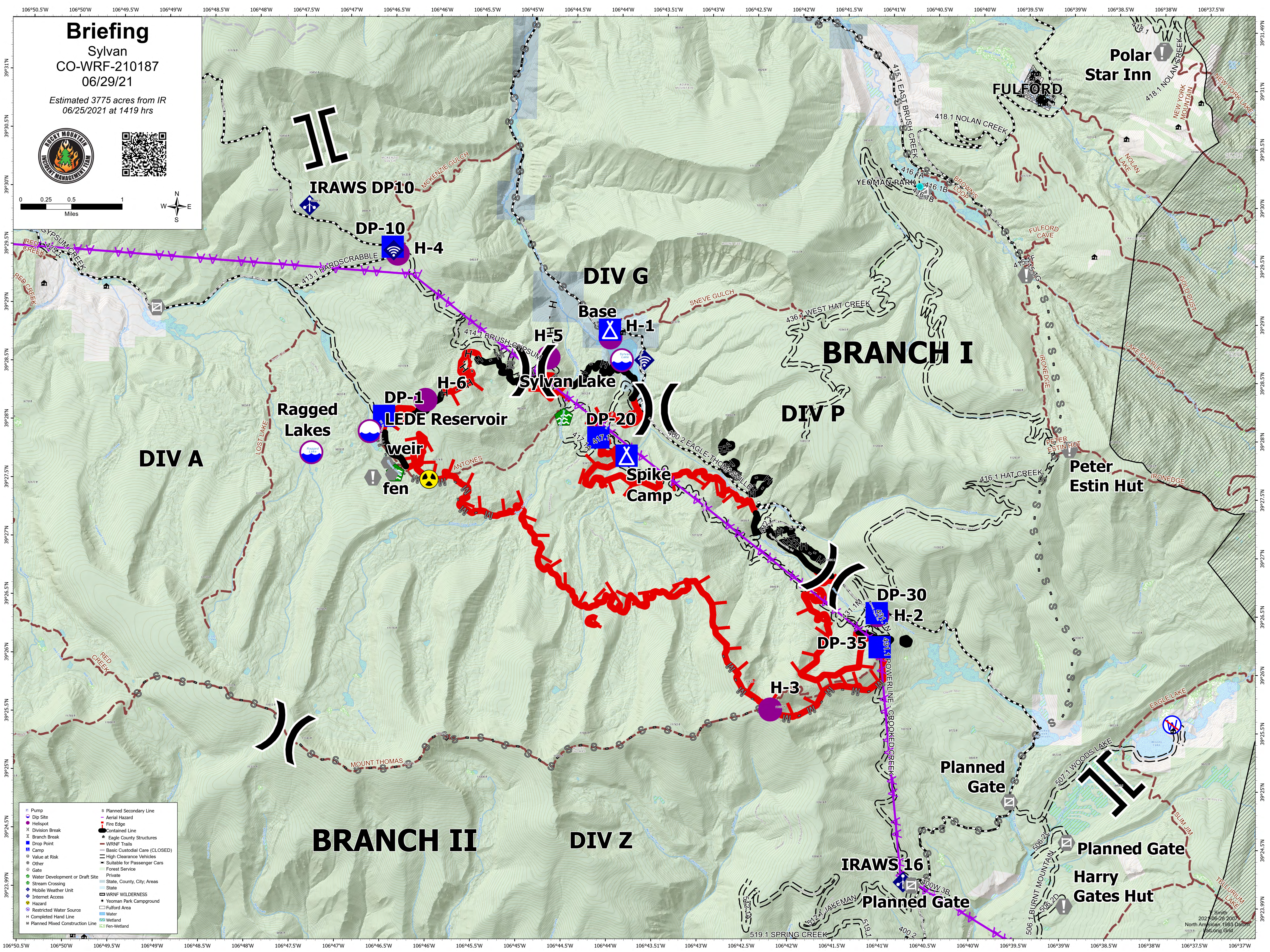
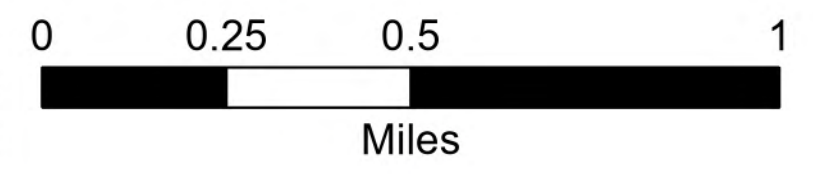


Briefing

Sylvan
CO-WRF-210187
06/29/21

Estimated 3775 acres from IR
06/25/2021 at 1419 hrs



- | | | | |
|--|---------------------------------|--|-------------------------------|
| | Pump | | Planned Secondary Line |
| | Dip Site | | Aerial Hazard |
| | Helispot | | Fire Edge |
| | Division Break | | Contained Line |
| | Branch Break | | Eagle County Structures |
| | Drop Point | | WRNF Trails |
| | Camp | | Basic Custodial Care (CLOSED) |
| | Value at Risk | | High Clearance Vehicles |
| | Other | | Suitable for Passenger Cars |
| | Gate | | Forest Service |
| | Water Development or Draft Site | | Private |
| | Stream Crossing | | State, County, City, Areas |
| | Mobile Weather Unit | | State |
| | Internet Access | | WRNF WILDERNESS |
| | Hazard | | Yeoman Park Campground |
| | Restricted Water Source | | Fulford Area |
| | Completed Hand Line | | Water |
| | Planned Mixed Construction Line | | Wetland |
| | | | Fen-Wetland |

Smith
202 06-28 2007
North American 1983 Datum
Foot-Cong Datum