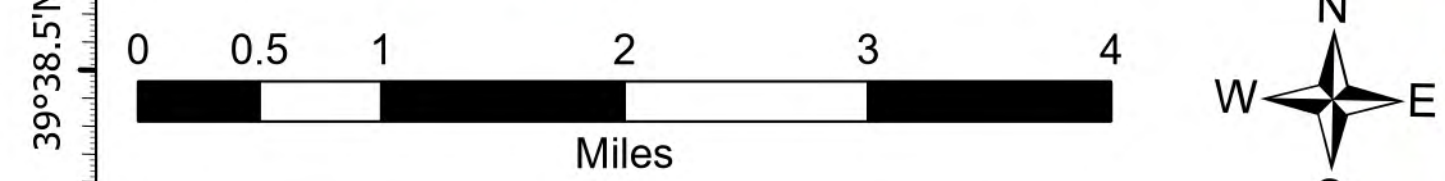


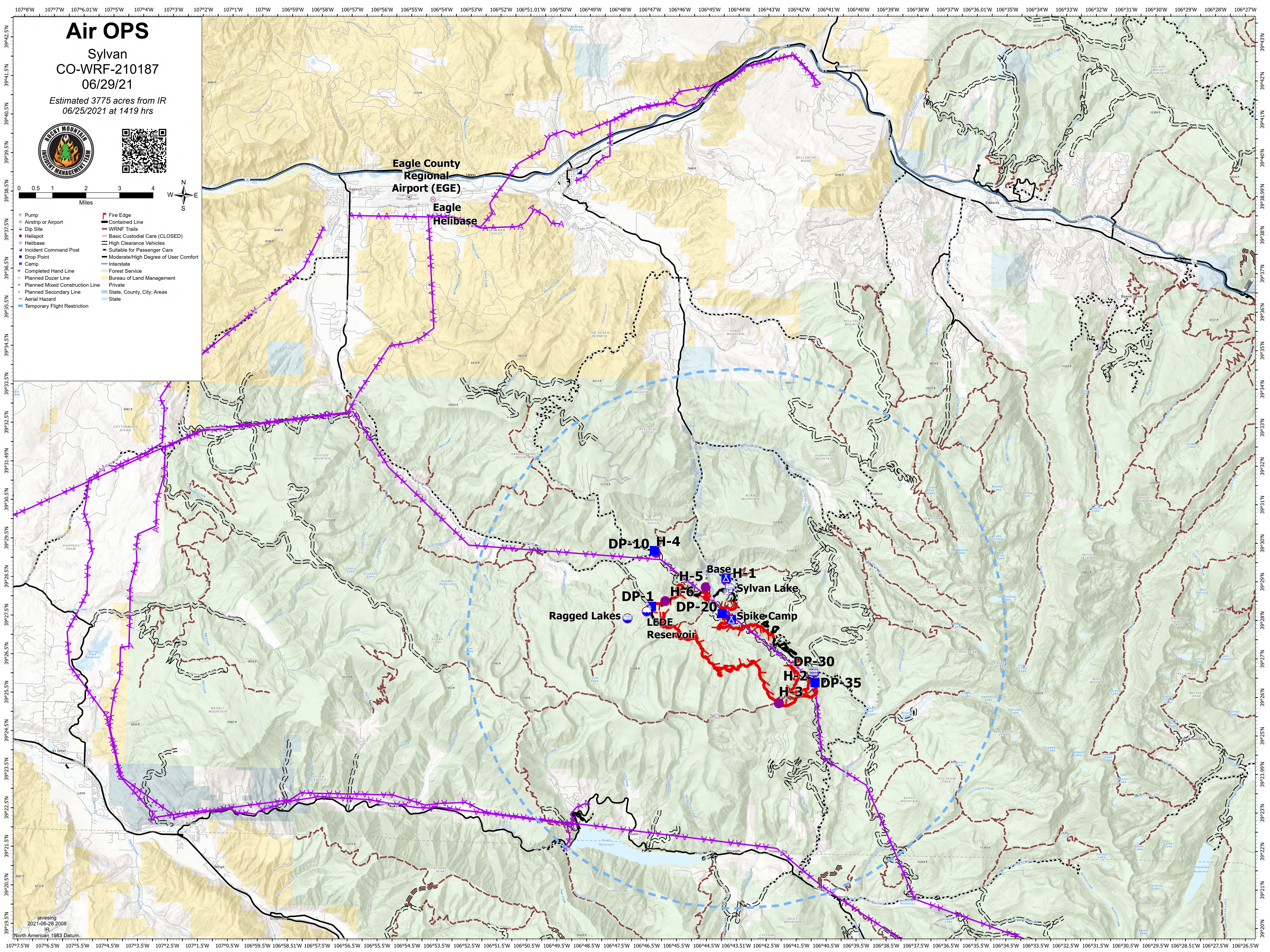
Air OPS

Sylvan
CO-WRF-210187
06/29/21

Estimated 3775 acres from IR
06/25/2021 at 1419 hrs



- Pump
- Airstrip or Airport
- Dip Site
- Helispot
- Helibase
- Incident Command Post
- Drop Point
- Camp
- Completed Hand Line
- Planned Dozer Line
- Planned Mixed Construction Line
- Planned Secondary Line
- Aerial Hazard
- Temporary Flight Restriction
- Fire Edge
- Contained Line
- WRNF Trails
- Basic Custodial Care (CLOSED)
- High Clearance Vehicles
- Suitable for Passenger Cars
- Moderate/High Degree of User Comfort
- Interstate
- Forest Service
- Bureau of Land Management
- Private
- State, County, City, Areas
- State



DP-10 H-4
H-5 Base H-1
Sylvan Lake
DP-1 H-6
Ragged Lakes Reservoir
LEDE
Spike Camp
DP-20
DP-30 H-2 DP-35
H-3