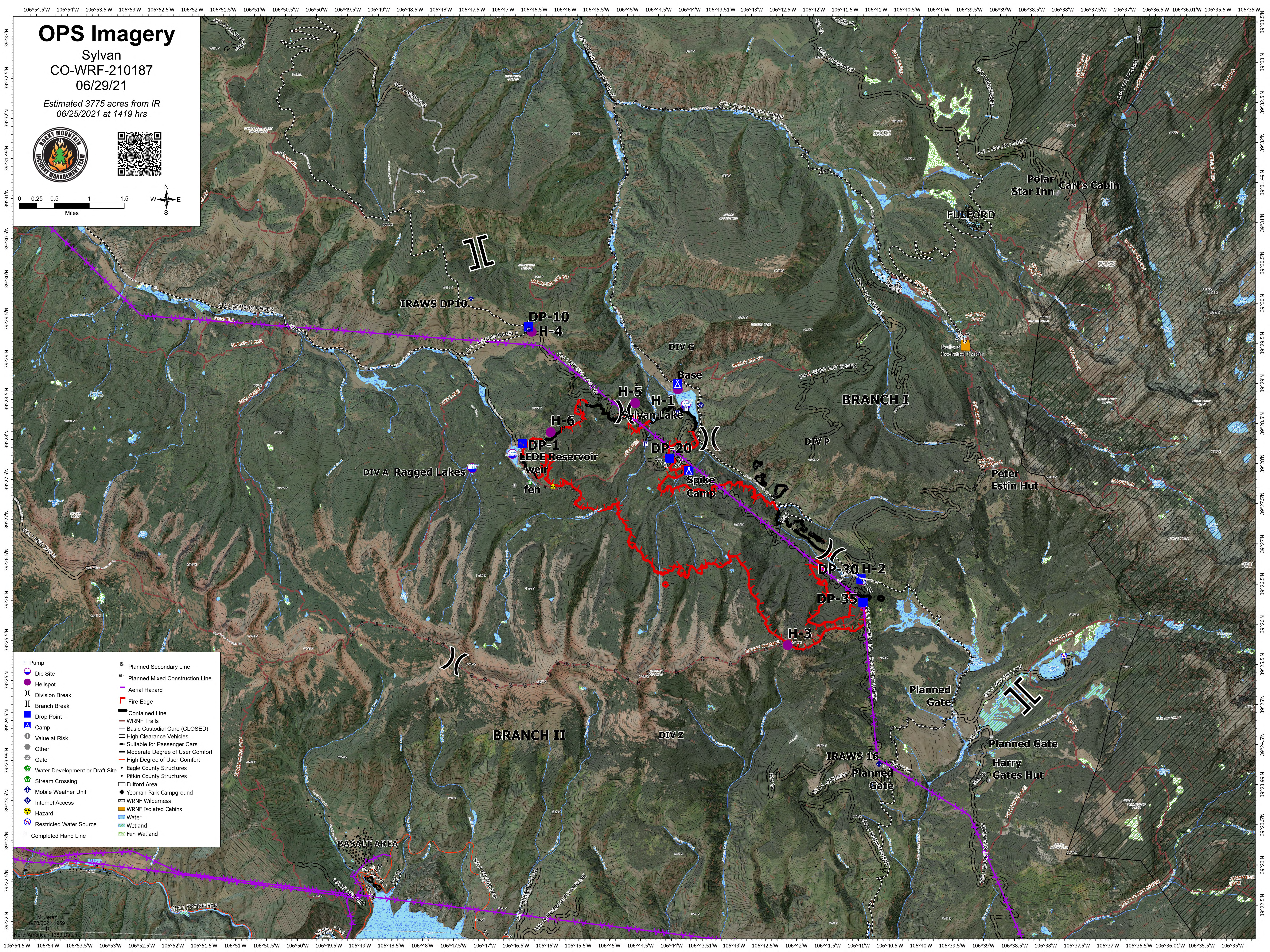
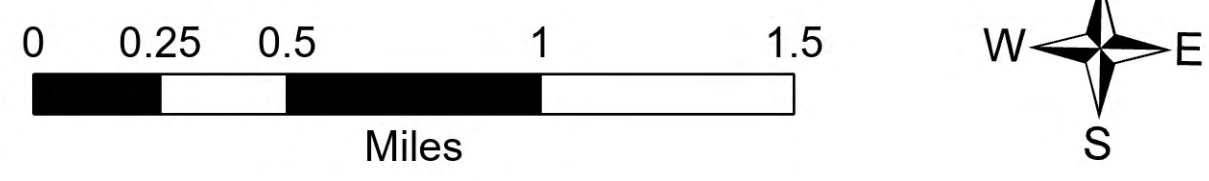


OPS Imagery

Sylvan
CO-WRF-210187
06/29/21

Estimated 3775 acres from IR
06/25/2021 at 1419 hrs



	Pump		Planned Secondary Line
	Dip Site		Planned Mixed Construction Line
	Helispot		Aerial Hazard
	Division Break		Fire Edge
	Branch Break		Contained Line
	Drop Point		WRNF Trails
	Camp		Basic Custodial Care (CLOSED)
	Value at Risk		High Clearance Vehicles
	Other		Suitable for Passenger Cars
	Gate		Moderate Degree of User Comfort
	Water Development or Draft Site		High Degree of User Comfort
	Stream Crossing		Eagle County Structures
	Mobile Weather Unit		Pitkin County Structures
	Internet Access		Fulford Area
	Hazard		Yeoman Park Campground
	Restricted Water Source		WRNF Wilderness
	Completed Hand Line		WRNF Isolated Cabins
			Water
			Wetland
			Fen-Wetland

M. Jurek
6/28/2021 1959
IR
North American 1983 Datum