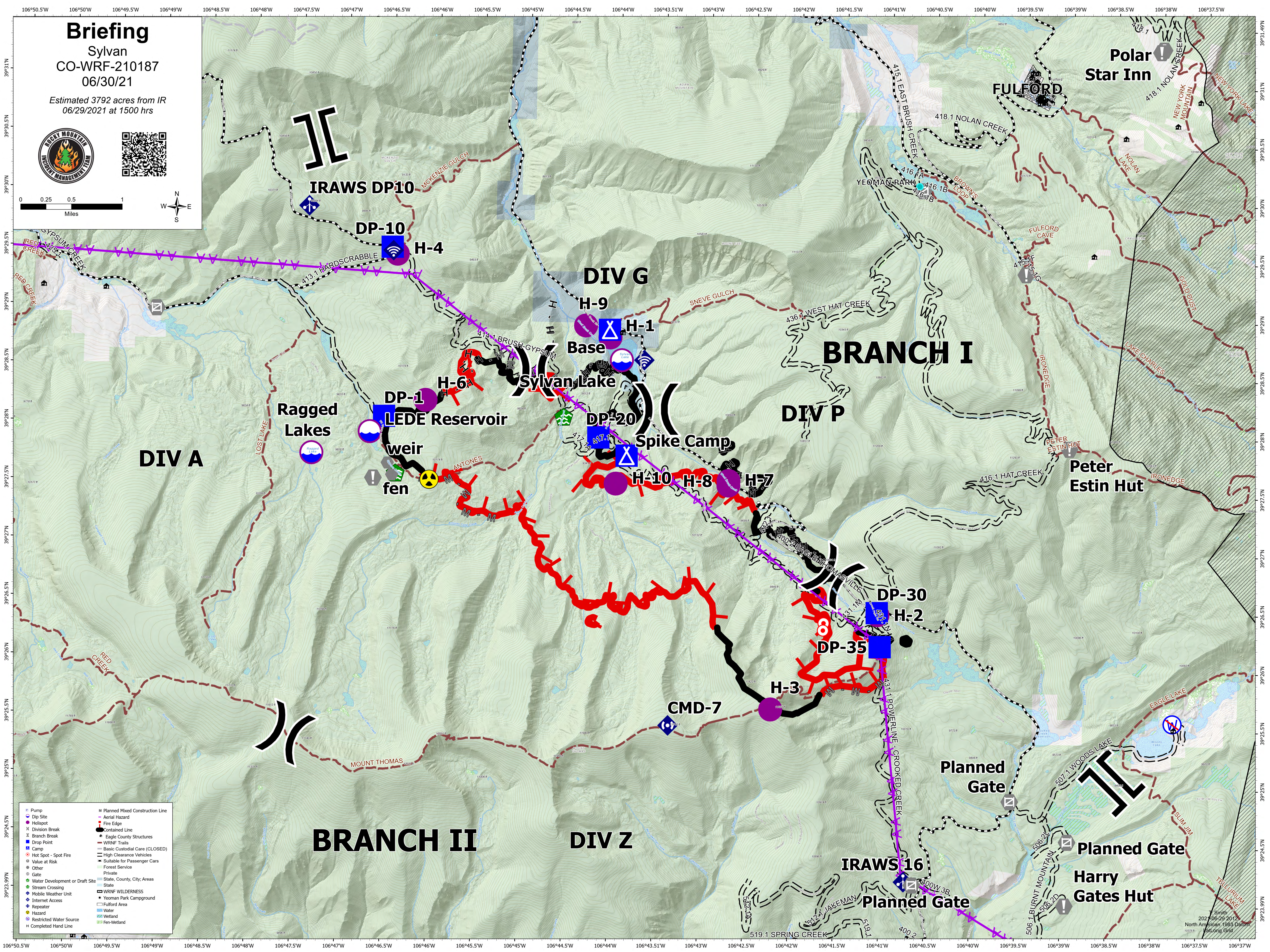
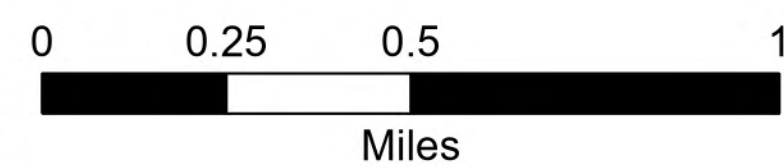


Briefing

Sylvan
CO-WRF-210187
06/30/21

Estimated 3792 acres from IR
06/29/2021 at 1500 hrs



- Pump
- Dip Site
- Helispot
- Division Break
- Branch Break
- Drop Point
- Camp
- Hot Spot - Spot Fire
- Value at Risk
- Forest Service
- Other
- Gate
- Water Development or Draft Site
- Stream Crossing
- Mobile Weather Unit
- Internet Access
- Repeater
- Hazard
- Restricted Water Source
- Completed Hand Line
- Planned Mixed Construction Line
- Aerial Hazard
- Fire Edge
- Contained Line
- Eagle County Structures
- WRNF Trails
- Basic Custodial Care (CLOSED)
- High Clearance Vehicles
- Suitable for Passenger Cars
- Forest Service
- Private
- State, County, City Areas
- State
- WRNF WILDERNESS
- Yeoman Park Campground
- Fulford Area
- Water
- Wetland
- Fen-Wetland