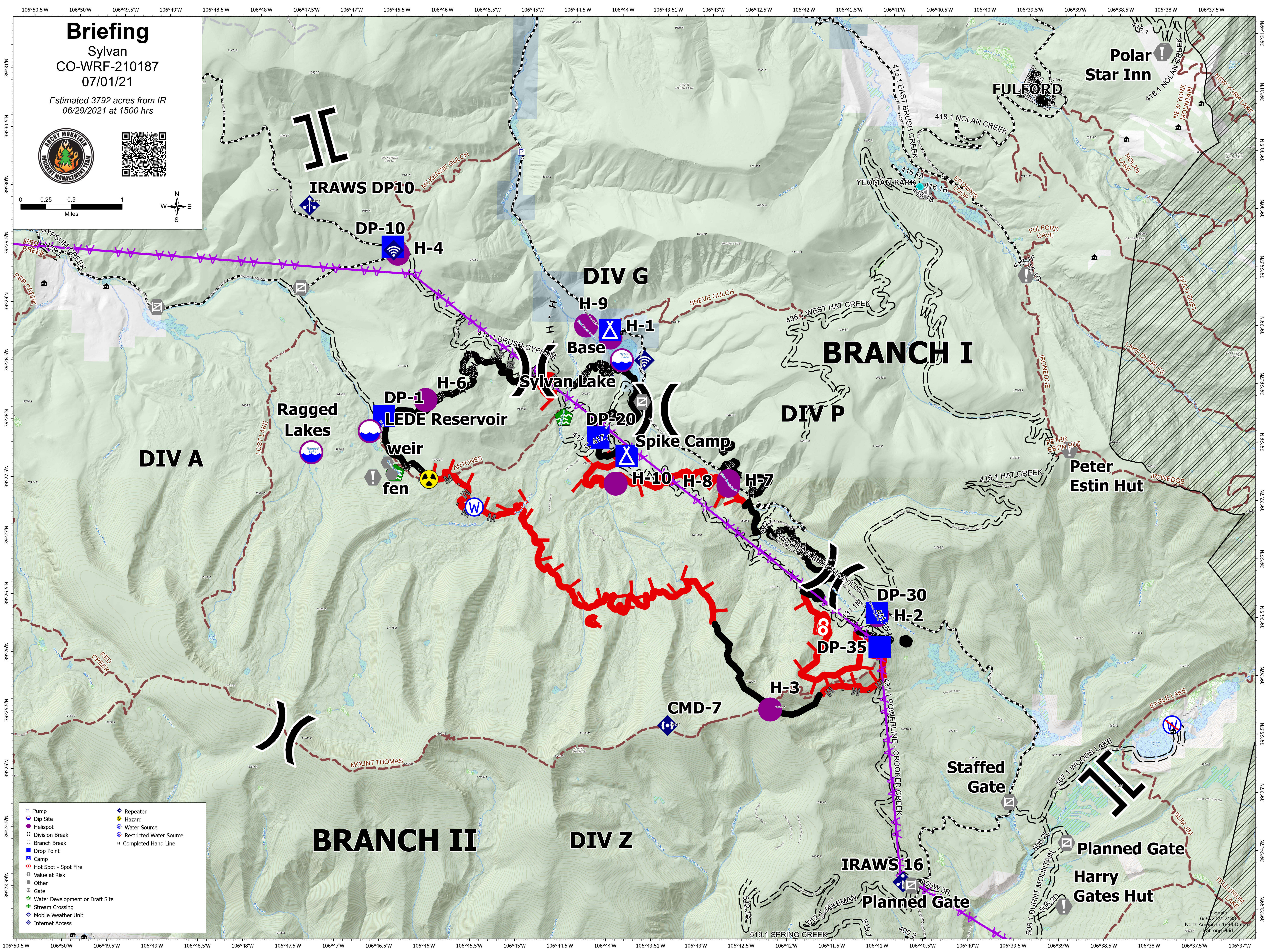


Briefing

Sylvan
CO-WRF-210187
07/01/21

Estimated 3792 acres from IR
06/29/2021 at 1500 hrs



- | | | | |
|--|---------------------------------|--|-------------------------|
| | Pump | | Repeater |
| | Dip Site | | Hazard |
| | Helispot | | Water Source |
| | Division Break | | Restricted Water Source |
| | Branch Break | | Completed Hand Line |
| | Drop Point | | |
| | Camp | | |
| | Hot Spot - Spot Fire | | |
| | Value at Risk | | |
| | Other | | |
| | Gate | | |
| | Water Development or Draft Site | | |
| | Stream Crossing | | |
| | Mobile Weather Unit | | |
| | Internet Access | | |

Smith
6/30/2021 2:13P
North American 1983 Datum
Foot-Cong Datum