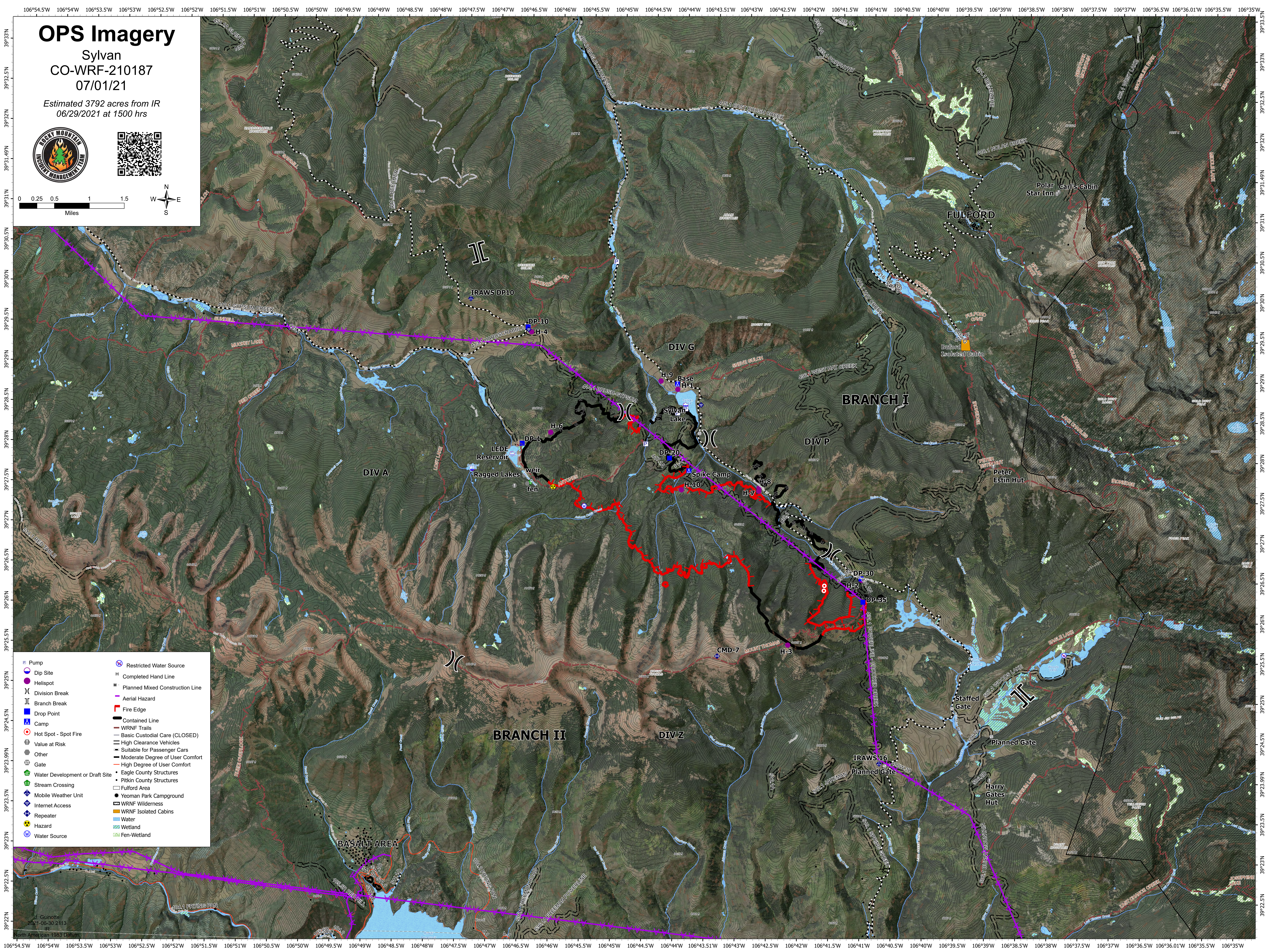
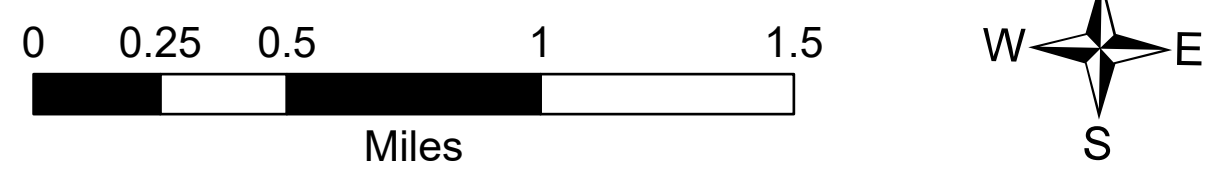


# OPS Imagery

Sylvan  
CO-WRF-210187  
07/01/21

Estimated 3792 acres from IR  
06/29/2021 at 1500 hrs



- |                                 |                                 |
|---------------------------------|---------------------------------|
| Pump                            | Restricted Water Source         |
| Dip Site                        | Completed Hand Line             |
| Helispot                        | Planned Mixed Construction Line |
| Division Break                  | Aerial Hazard                   |
| Branch Break                    | Fire Edge                       |
| Drop Point                      | Contained Line                  |
| Camp                            | WRNF Trails                     |
| Hot Spot - Spot Fire            | Basic Custodial Care (CLOSED)   |
| Value at Risk                   | High Clearance Vehicles         |
| Other                           | Suitable for Passenger Cars     |
| Gate                            | Moderate Degree of User Comfort |
| Water Development or Draft Site | High Degree of User Comfort     |
| Stream Crossing                 | Eagle County Structures         |
| Mobile Weather Unit             | Pitkin County Structures        |
| Internet Access                 | Fulford Area                    |
| Repeater                        | Yeoman Park Campground          |
| Hazard                          | WRNF Wilderness                 |
| Water Source                    | WRNF Isolated Cabins            |
|                                 | Water                           |
|                                 | Wetland                         |
|                                 | Fen-Wetland                     |