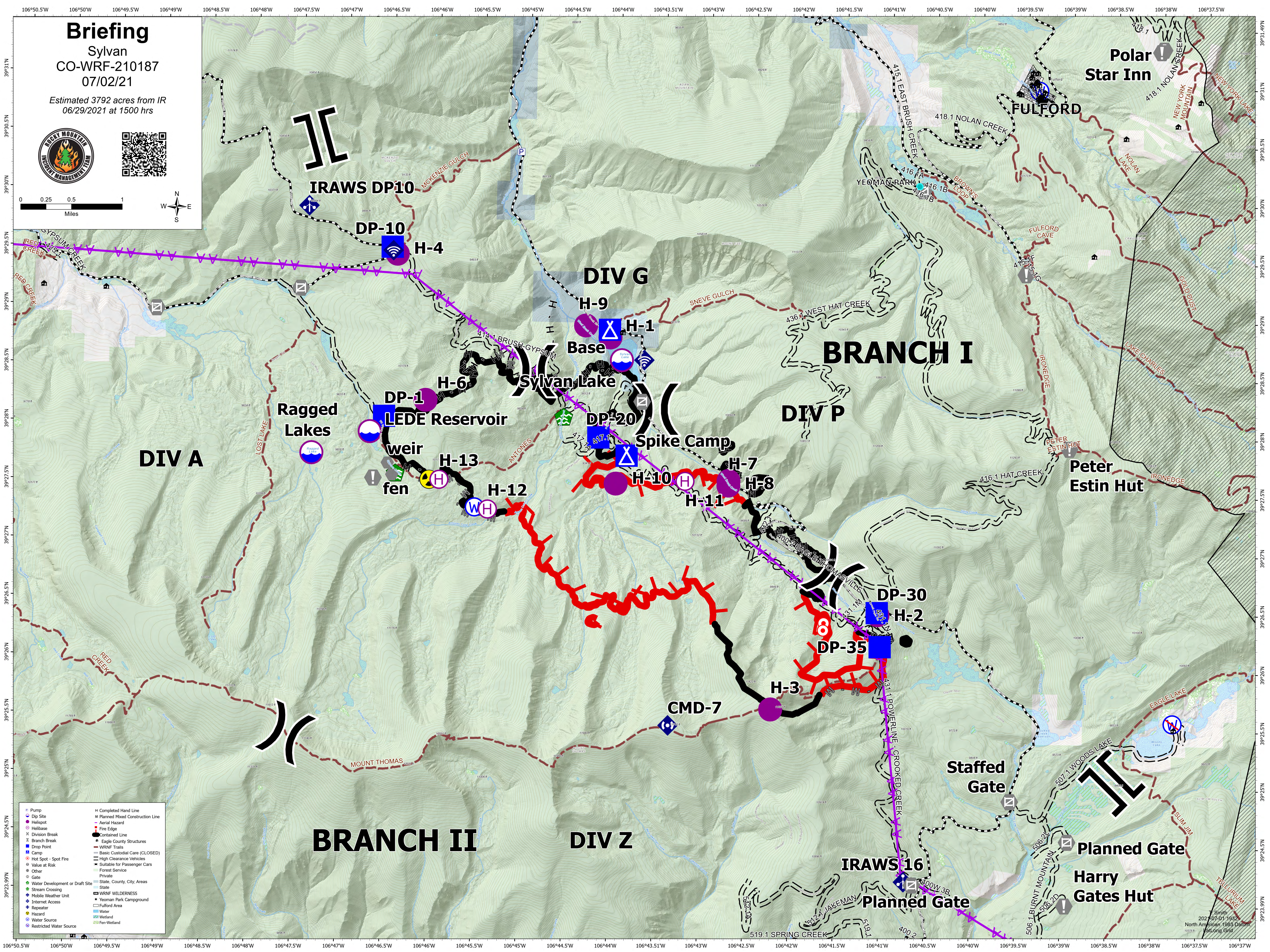
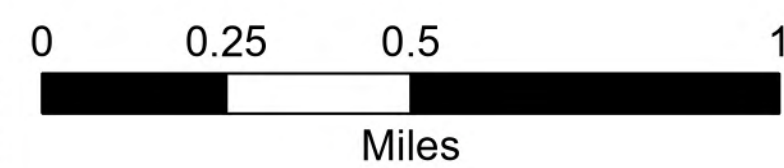


Briefing

Sylvan
CO-WRF-210187
07/02/21

Estimated 3792 acres from IR
06/29/2021 at 1500 hrs



Pump	Completed Hand Line
Dip Site	Planned Mixed Construction Line
Helispot	Aerial Hazard
Division Break	Fire Edge
Helibase	Contained Line
Drop Point	Eagle County Structures
Camp	WRNF Trails
Hot Spot - Spot Fire	Basic Custodial Care (CLOSED)
Value at Risk	High Clearance Vehicles
Other	Suitable for Passenger Cars
Gate	Forest Service
Water Development or Draft Site	Private
Stream Crossing	State, County, City, Areas
Mobile Weather Unit	State
Internet Access	WRNF WILDERNESS
Repeater	Yeoman Park Campground
Hazard	Fulford Area
Water Source	Water
Restricted Water Source	Wetland
	Fen-Wetland

Smith
2021-07-01 1932
North American 1983 Datum
Foot-Cong Datum