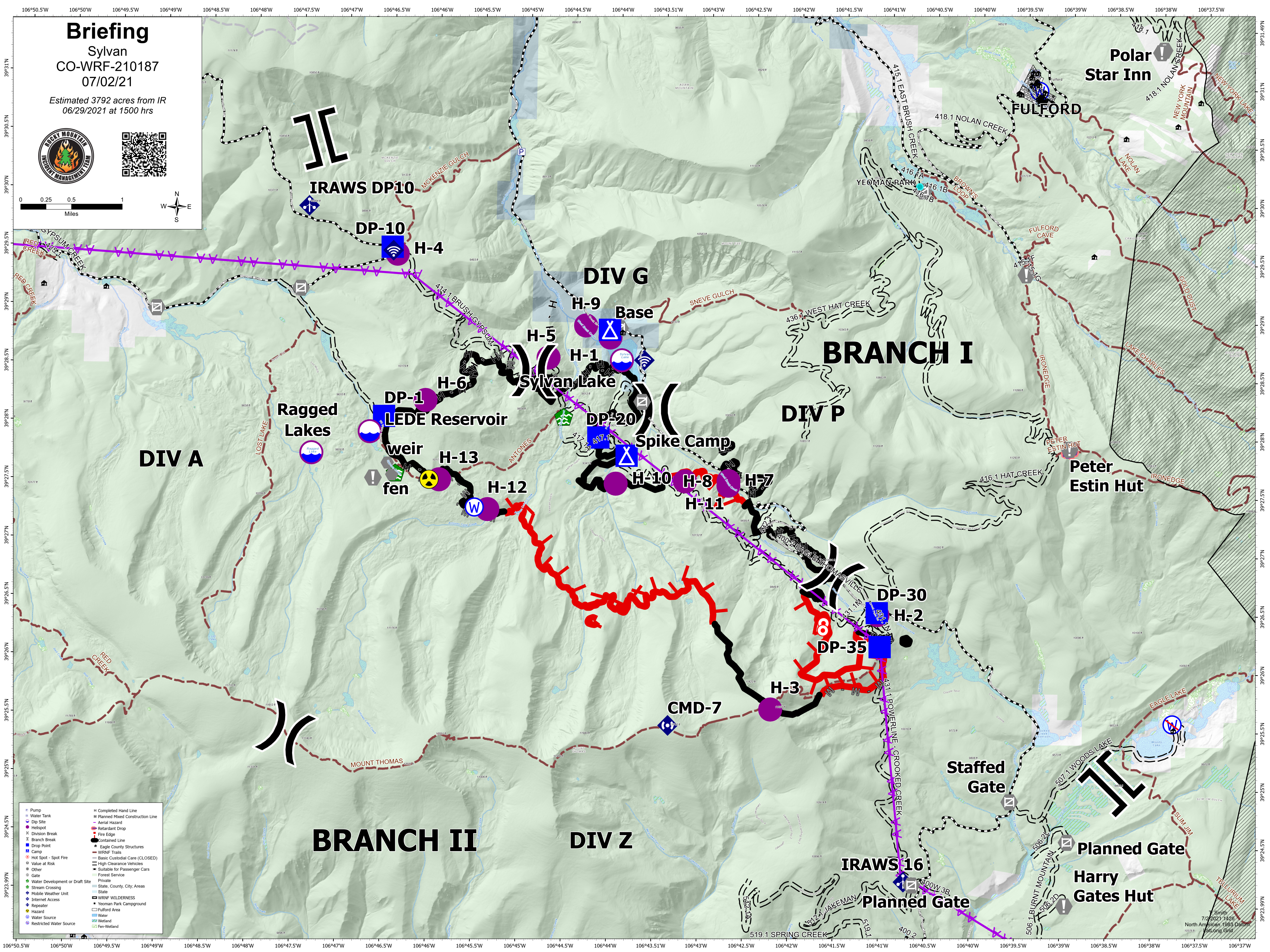
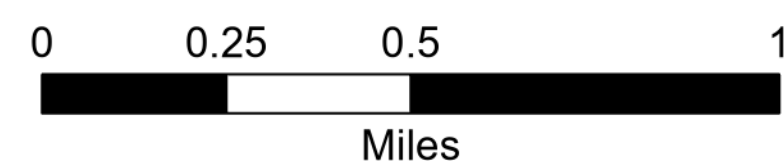


Briefing

Sylvan
CO-WRF-210187
07/02/21

Estimated 3792 acres from IR
06/29/2021 at 1500 hrs



- | | |
|--|---|
| <ul style="list-style-type: none">PumpWater TankDip SiteDivision BreakBranch BreakDrop PointCampHot Spot - Spot FireValue at RiskOtherWater Development or Draft SiteStream CrossingMobile Weather UnitInternet AccessRepeaterHazardWater SourceRestricted Water Source | <ul style="list-style-type: none">Completed Hand LinePlanned Mixed Construction LineAerial HazardRetardant DropFire EdgeContained LineEagle County StructuresWRNF TrailsBasic Custodial Care (CLOSED)High Clearance VehiclesSuitable for Passenger CarsForest ServicePrivateSlate, County, City, AreasSlateWRNF WILDERNESSYeoman Park CampgroundFulford AreaWaterWetlandFen-Wetland |
|--|---|