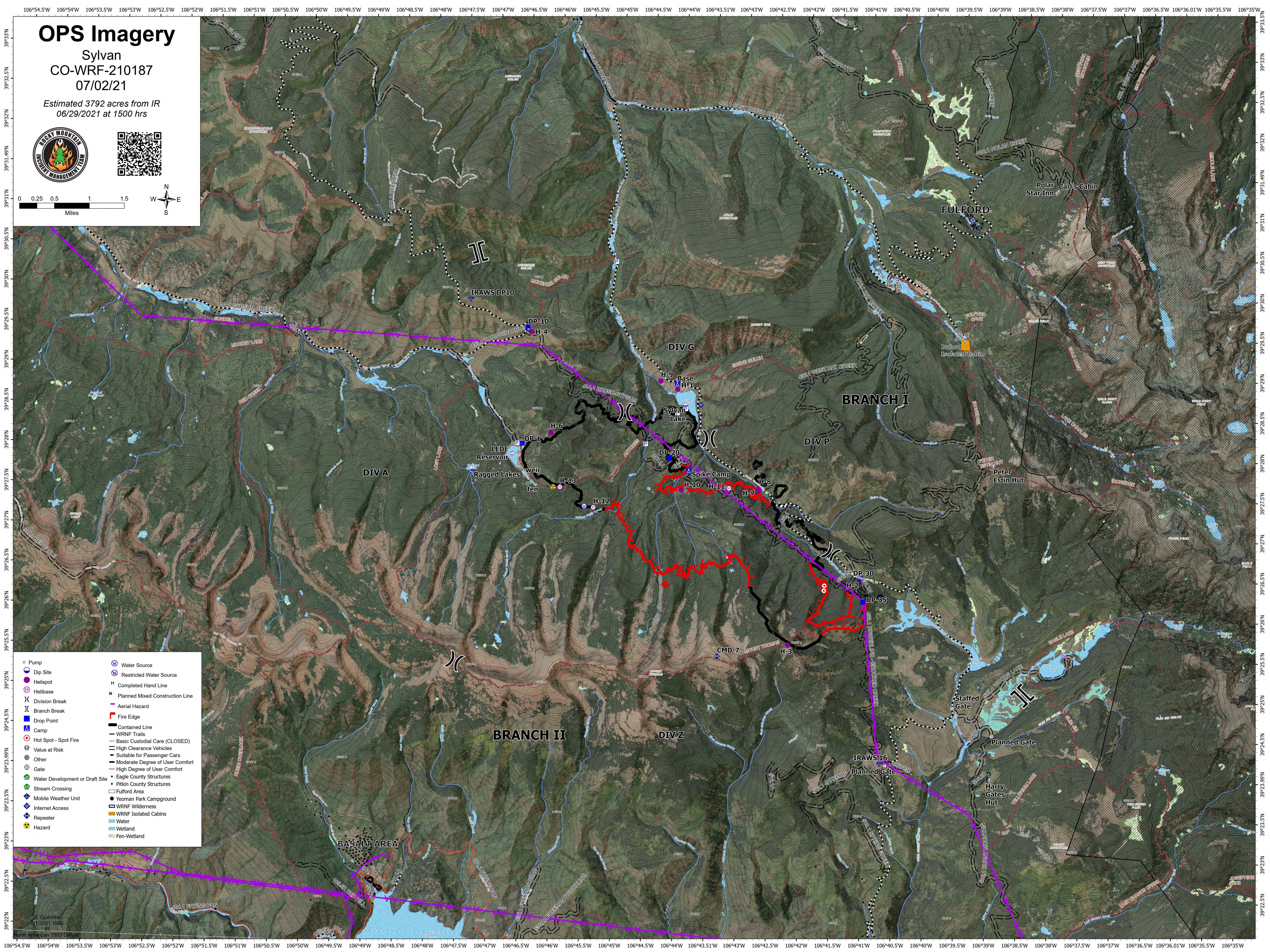
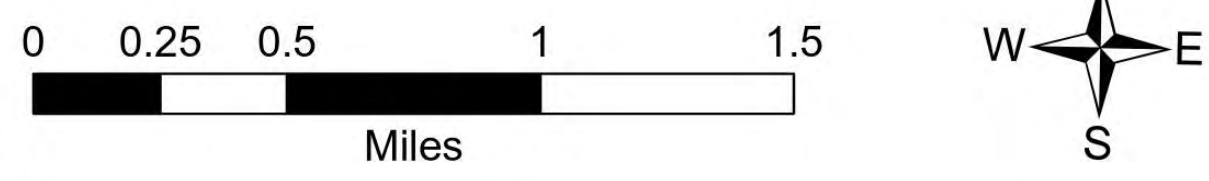


OPS Imagery

Sylvan
CO-WRF-210187
07/02/21

Estimated 3792 acres from IR
06/29/2021 at 1500 hrs



- Pump
- Dip Site
- Helispot
- Helibase
- Division Break
- Branch Break
- Drop Point
- Camp
- Hot Spot - Spot Fire
- Value at Risk
- Other
- Gate
- Water Development or Draft Site
- Stream Crossing
- Mobile Weather Unit
- Internet Access
- Repeater
- Hazard
- Water Source
- Restricted Water Source
- Completed Hand Line
- Planned Mixed Construction Line
- Aerial Hazard
- Fire Edge
- Contained Line
- WRNF Trails
- Basic Custodial Care (CLOSED)
- High Clearance Vehicles
- Suitable for Passenger Cars
- Moderate Degree of User Comfort
- High Degree of User Comfort
- Eagle County Structures
- Pitkin County Structures
- Fulford Area
- Yeoman Park Campground
- WRNF Wilderness
- WRNF Isolated Cabins
- Water
- Wetland
- Fen-Wetland

© Guihotte
7/1/2021, 1950
IR
North American 1983 Datum