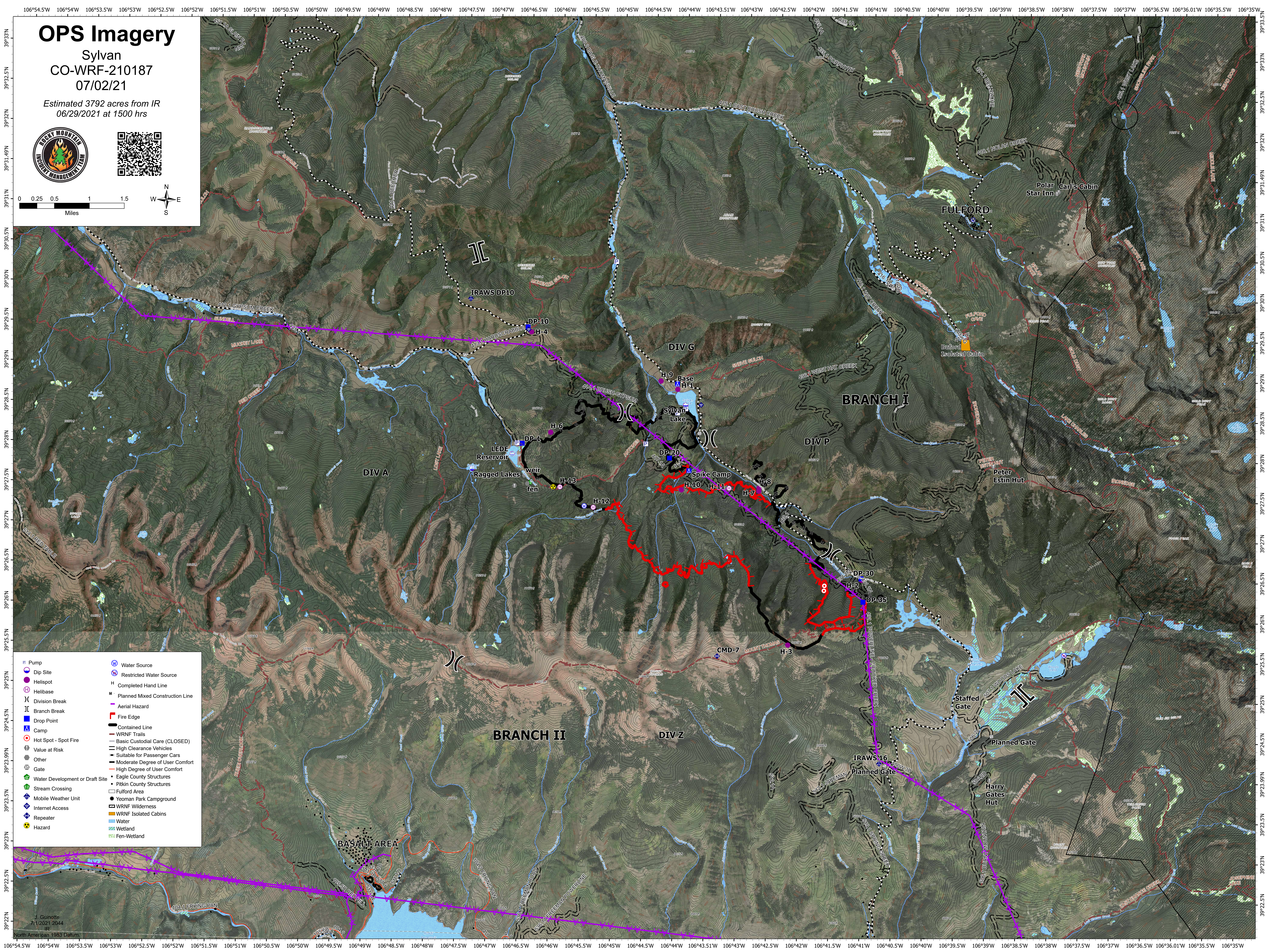
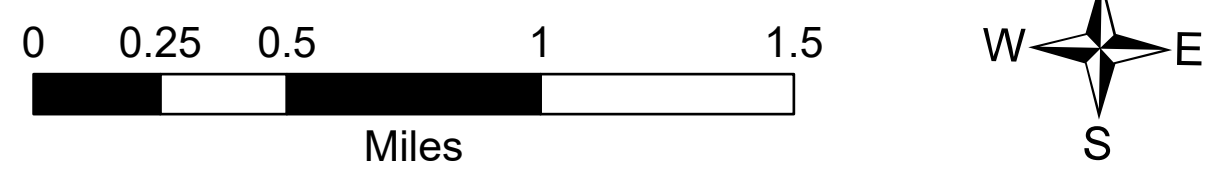


OPS Imagery

Sylvan
CO-WRF-210187
07/02/21

Estimated 3792 acres from IR
06/29/2021 at 1500 hrs



- | | |
|---------------------------------|---------------------------------|
| Pump | Water Source |
| Dip Site | Restricted Water Source |
| Helispot | Completed Hand Line |
| Helibase | Planned Mixed Construction Line |
| Division Break | Aerial Hazard |
| Branch Break | Fire Edge |
| Drop Point | Contained Line |
| Camp | WRNF Trails |
| Hot Spot - Spot Fire | Basic Custodial Care (CLOSED) |
| Value at Risk | High Clearance Vehicles |
| Other | Suitable for Passenger Cars |
| Gate | Moderate Degree of User Comfort |
| Water Development or Draft Site | High Degree of User Comfort |
| Stream Crossing | Eagle County Structures |
| Mobile Weather Unit | Pitkin County Structures |
| Internet Access | Fulford Area |
| Repeater | Yeoman Park Campground |
| Hazard | WRNF Wilderness |
| | WRNF Isolated Cabins |
| | Water |
| | Wetland |
| | Fen-Wetland |