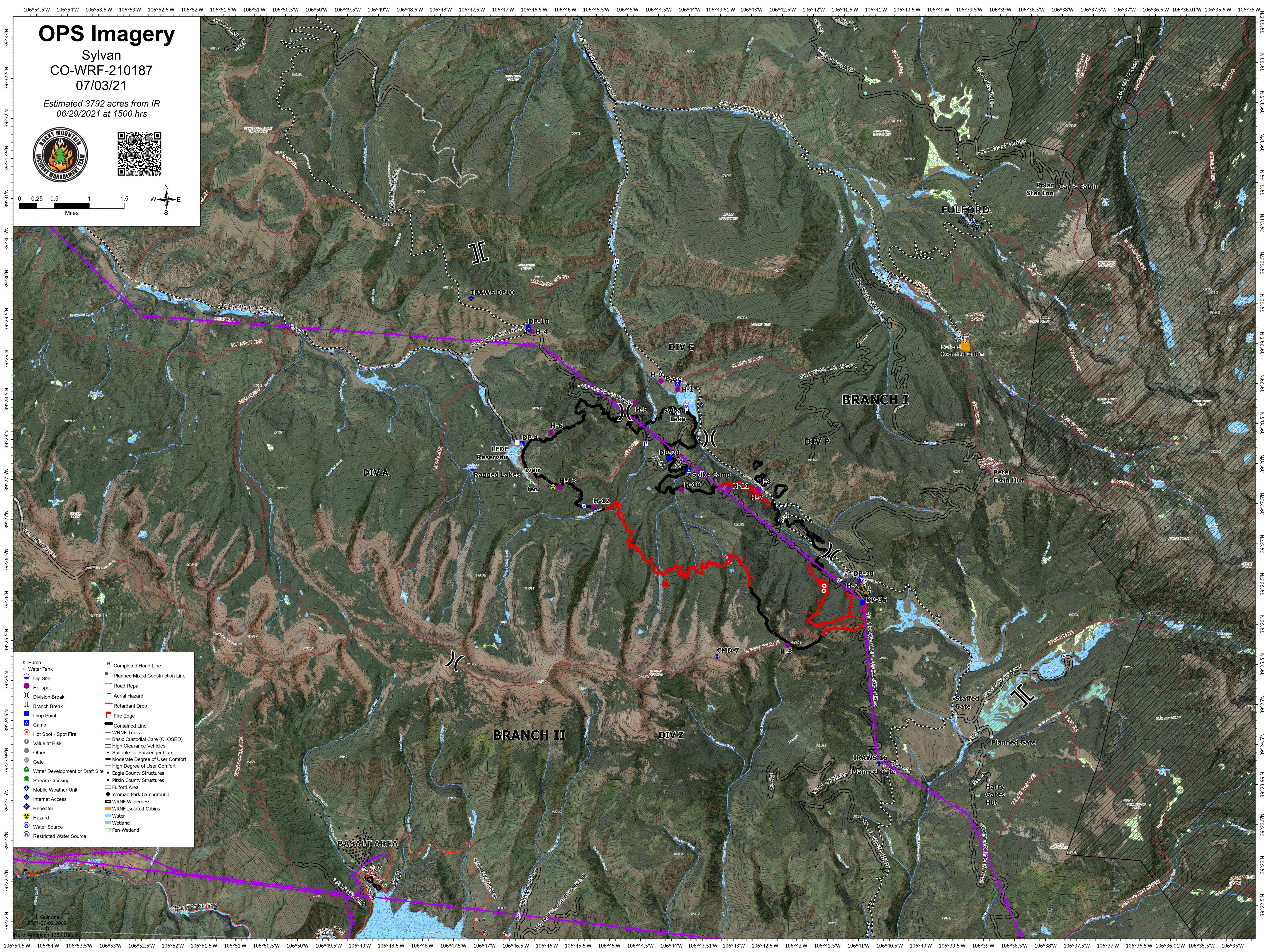
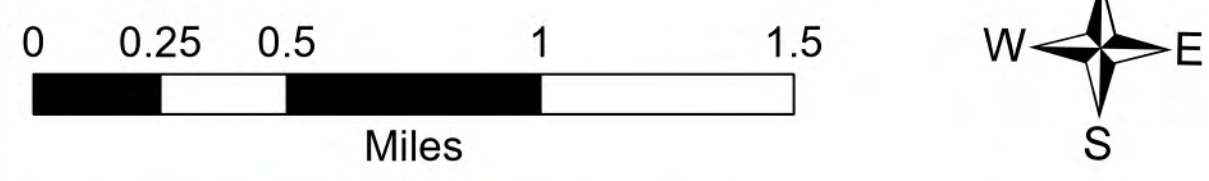


OPS Imagery

Sylvan
CO-WRF-210187
07/03/21

Estimated 3792 acres from IR
06/29/2021 at 1500 hrs



- | | | | |
|--|---------------------------------|--|---------------------------------|
| | Pump | | Completed Hand Line |
| | Water Tank | | Planned Mixed Construction Line |
| | Dip Site | | Road Repair |
| | Helispot | | Aerial Hazard |
| | Division Break | | Retardant Drop |
| | Branch Break | | Fire Edge |
| | Drop Point | | Contained Line |
| | Camp | | WRNF Trails |
| | Hot Spot - Spot Fire | | Basic Custodial Care (CLOSED) |
| | Value at Risk | | High Clearance Vehicles |
| | Other | | Suitable for Passenger Cars |
| | Gate | | Moderate Degree of User Comfort |
| | Water Development or Draft Site | | High Degree of User Comfort |
| | Stream Crossing | | Eagle County Structures |
| | Mobile Weather Unit | | Pitkin County Structures |
| | Internet Access | | Fulford Area |
| | Repeater | | Yeoman Park Campground |
| | Hazard | | WRNF Wilderness |
| | Water Source | | WRNF Isolated Cabins |
| | Restricted Water Source | | Water |
| | | | Wetland |
| | | | Fen-Wetland |