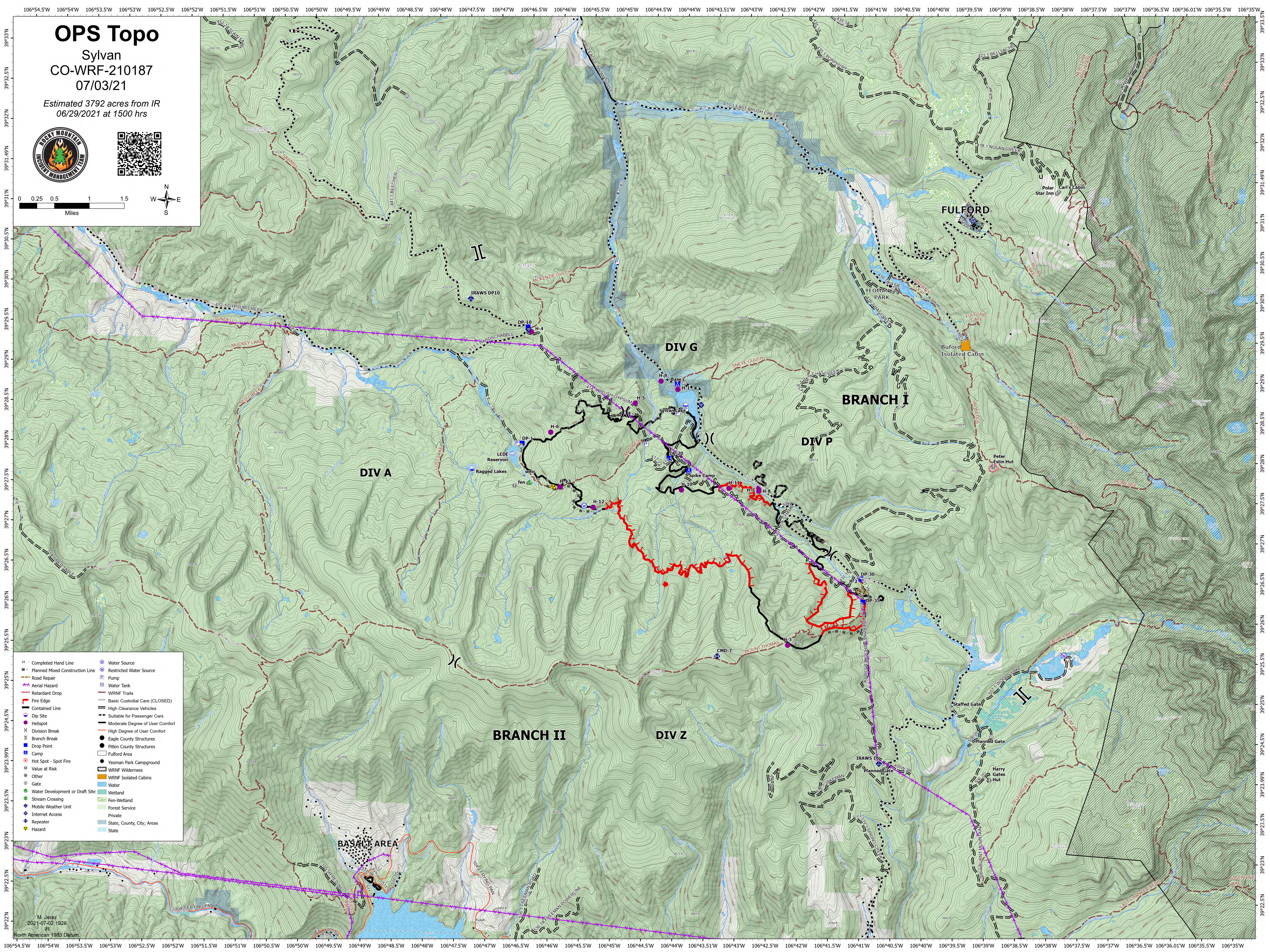
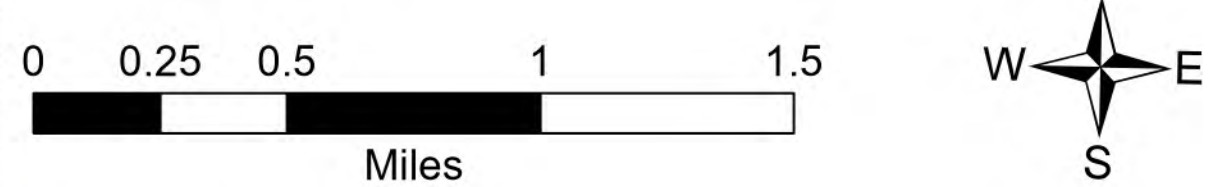


OPS Topo

Sylvan
CO-WRF-210187
07/03/21

Estimated 3792 acres from IR
06/29/2021 at 1500 hrs



- | | | |
|-----|---------------------------------|---------------------------------|
| H | Completed Hand Line | Water Source |
| M | Planned Mixed Construction Line | Restricted Water Source |
| R | Road Repair | Pump |
| A | Aerial Hazard | Water Tank |
| RD | Retardant Drop | WRNF Trails |
| FE | Fire Edge | Basic Custodial Care (CLOSED) |
| CL | Contained Line | High Clearance Vehicles |
| DS | Dip Site | Suitable for Passenger Cars |
| HS | Helispot | Moderate Degree of User Comfort |
| DB | Division Break | High Degree of User Comfort |
| BB | Branch Break | Eagle County Structures |
| DP | Drop Point | Pitkin County Structures |
| C | Camp | Fulford Area |
| SS | Hot Spot - Spot Fire | Yeoman Park Campground |
| VR | Value at Risk | WRNF Wilderness |
| O | Other | WRNF Isolated Cabins |
| G | Gate | Water |
| WD | Water Development or Draft Site | Wetland |
| SC | Stream Crossing | Fen-Wetland |
| MWU | Mobile Weather Unit | Forest Service |
| IA | Internet Access | Private |
| R | Repeater | State, County, City, Areas |
| HZ | Hazard | State |

M. Jirik
2021-07-02 1826
IR
North American 1983 Datum