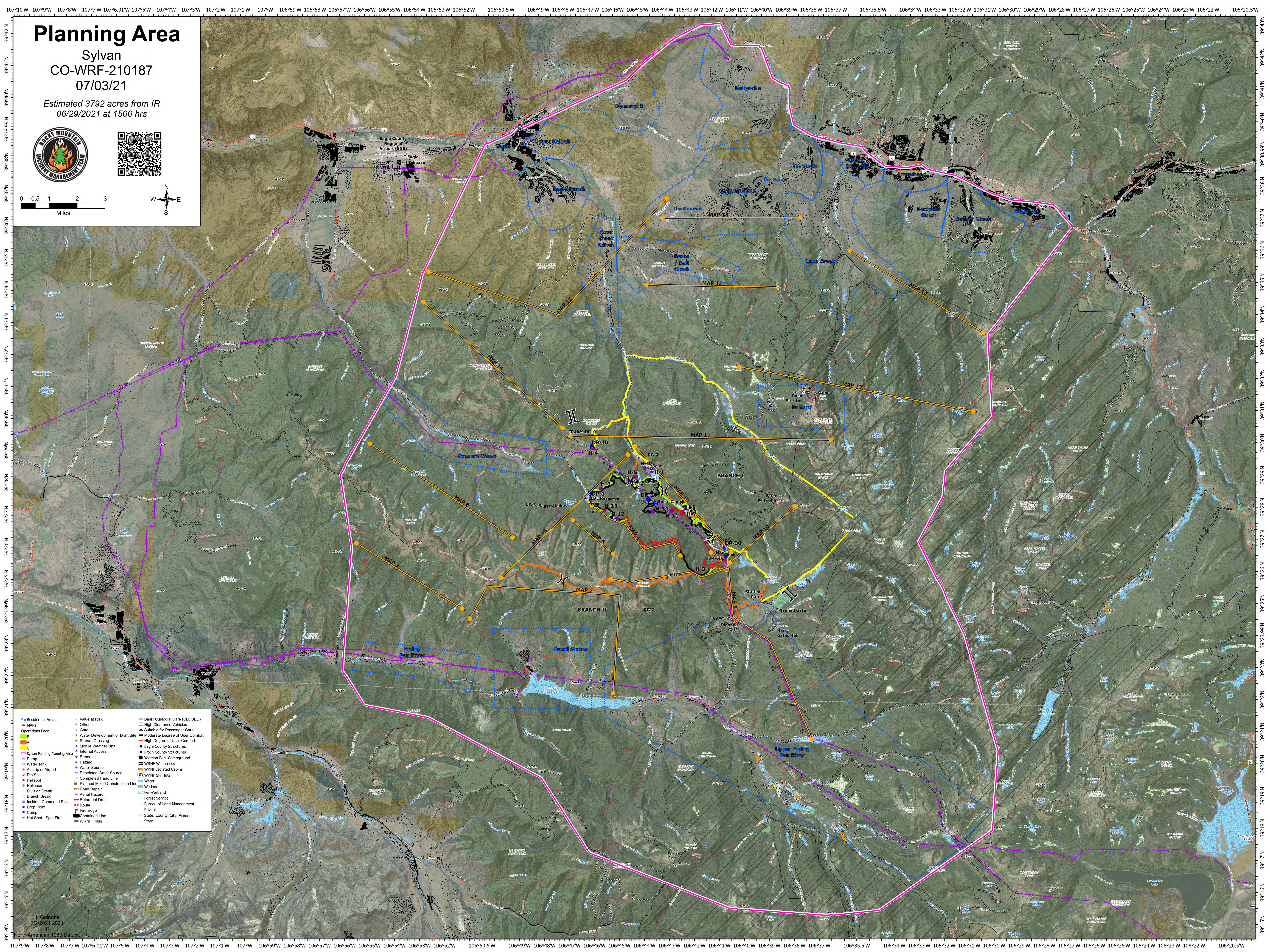


Planning Area

Sylvan
CO-WRF-210187
07/03/21

Estimated 3792 acres from IR
06/29/2021 at 1500 hrs



- Residential Areas
- Value at Risk
- Other
- Gate
- Water Development or Draft Site
- Stream Crossing
- Mobile Weather Unit
- Internet Access
- Sylvan Pending Planning Area
- Pump
- Water Tank
- Airstrip or Airport
- Dip Site
- Helipad
- Helibase
- Division Break
- Branch Break
- Incident Command Post
- Drop Point
- Camp
- Hot Spot - Spot Fire
- Basic Custodial Care (CLOSED)
- High Clearance Vehicles
- Suitable for Passenger Cars
- Moderate Degree of User Comfort
- High Degree of User Comfort
- Eagle County Structures
- Pitkin County Structures
- Yeoman Park Campground
- WRNF Wilderness
- Hazard
- Water Source
- Restricted Water Source
- Completed Hand Line
- Planned Mixed Construction Line
- Road Repair
- Aerial Hazard
- Retardant Drop
- Route
- Fire Edge
- Private
- State, County, City, Areas
- State
- WRNF Isolated Cabins
- WRNF Ski Huts
- Water
- Wetland
- Fen-Wetland
- Forest Service
- Bureau of Land Management
- Private
- State, County, City, Areas
- State