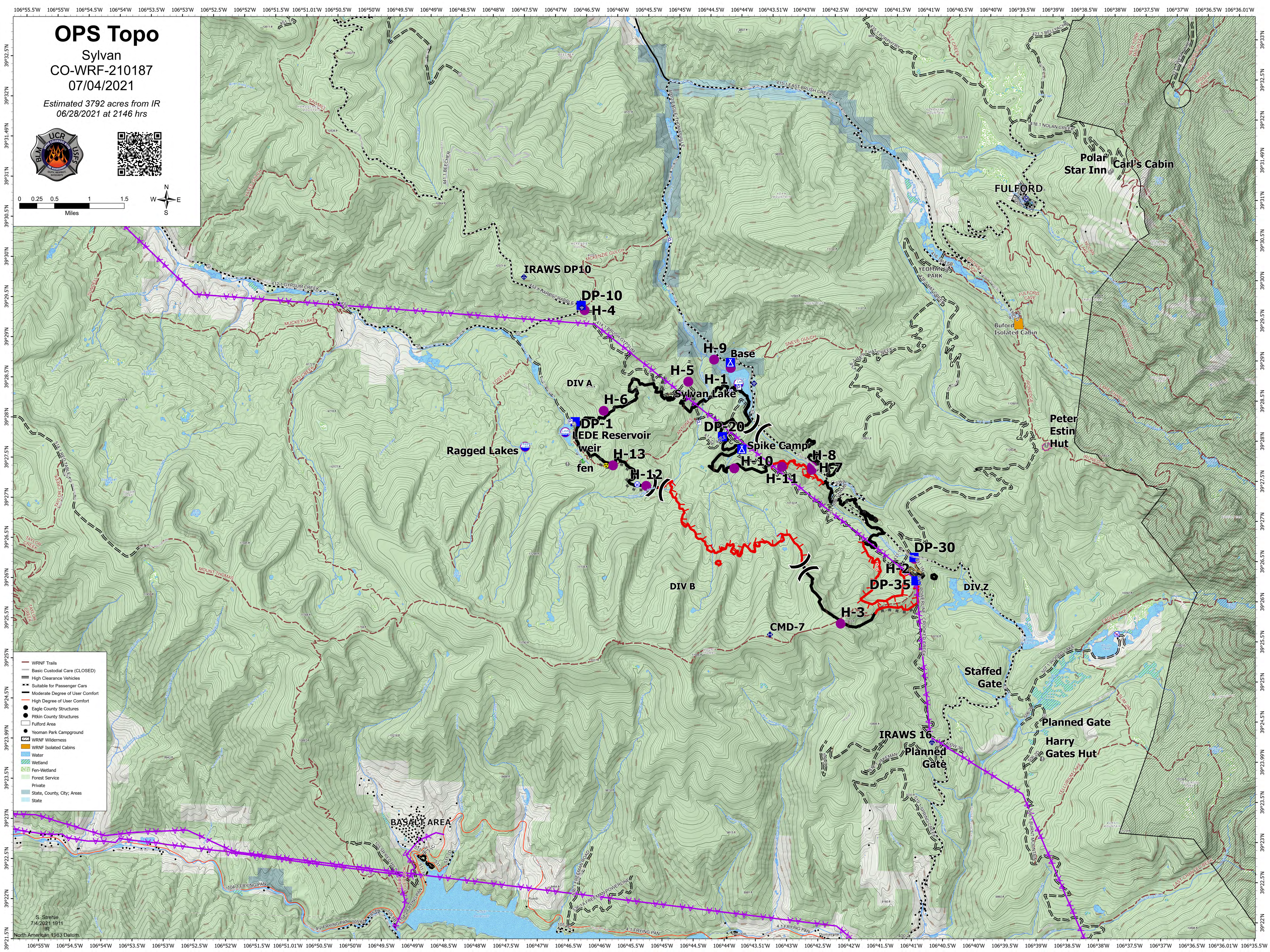
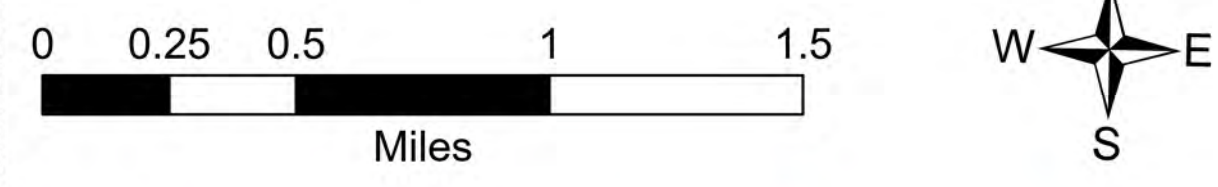


# OPS Topo

Sylvan  
CO-WRF-210187  
07/04/2021

Estimated 3792 acres from IR  
06/28/2021 at 2146 hrs



- WRNF Trails
- Basic Custodial Care (CLOSED)
- High Clearance Vehicles
- Suitable for Passenger Cars
- Moderate Degree of User Comfort
- High Degree of User Comfort
- Eagle County Structures
- Pitkin County Structures
- Fulford Area
- Yeoman Park Campground
- WRNF Wilderness
- WRNF Isolated Cabins
- Water
- Wetland
- Fen-Wetland
- Forest Service
- Private
- State, County, City, Areas
- State

S. Strehle  
7/4/2021 1911  
IR  
North American 1983 Datum