

# OPS Topo

Sylvan  
CO-WRF-210187  
07/05/2021

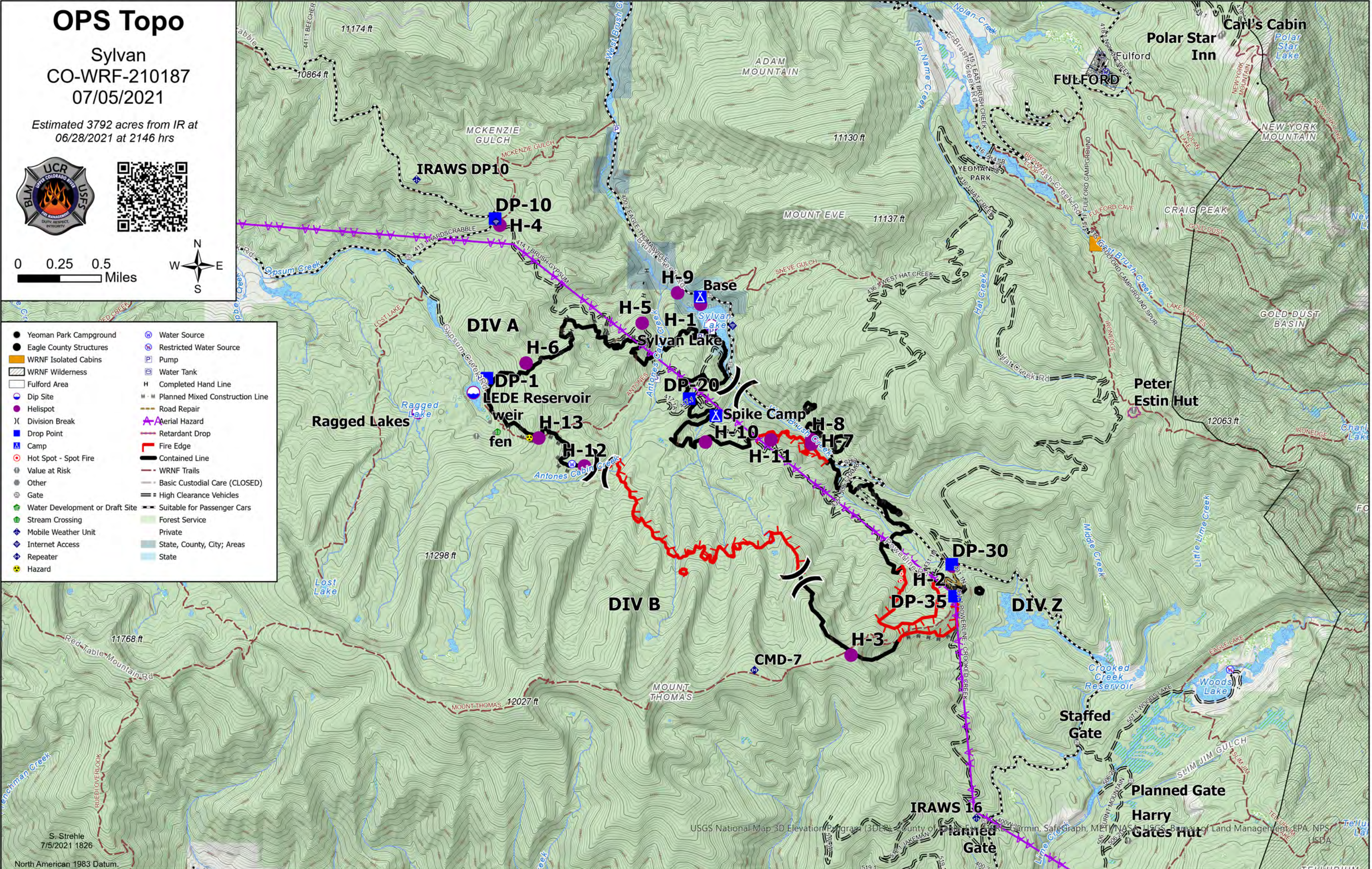
Estimated 3792 acres from IR at  
06/28/2021 at 2146 hrs



0 0.25 0.5 Miles



- |                                   |                                   |
|-----------------------------------|-----------------------------------|
| ● Yeoman Park Campground          | ⊕ Water Source                    |
| ● Eagle County Structures         | ⊕ Restricted Water Source         |
| ■ WRNF Isolated Cabins            | ⊕ Pump                            |
| ▨ WRNF Wilderness                 | ⊕ Water Tank                      |
| ▭ Fulford Area                    | ⊕ Completed Hand Line             |
| ⊕ Dip Site                        | ⊕ Planned Mixed Construction Line |
| ● Helispot                        | ⊕ Road Repair                     |
| ⊕ Division Break                  | ⊕ Aerial Hazard                   |
| ⊕ Drop Point                      | ⊕ Retardant Drop                  |
| ⊕ Camp                            | ⊕ Fire Edge                       |
| ⊕ Hot Spot - Spot Fire            | ⊕ Contained Line                  |
| ⊕ Value at Risk                   | ⊕ WRNF Trails                     |
| ⊕ Other                           | ⊕ Basic Custodial Care (CLOSED)   |
| ⊕ Gate                            | ⊕ High Clearance Vehicles         |
| ⊕ Water Development or Draft Site | ⊕ Suitable for Passenger Cars     |
| ⊕ Stream Crossing                 | ⊕ Forest Service                  |
| ⊕ Mobile Weather Unit             | ⊕ Private                         |
| ⊕ Internet Access                 | ⊕ State, County, City, Areas      |
| ⊕ Repeater                        | ⊕ State                           |
| ⊕ Hazard                          |                                   |



S. Strehle  
7/5/2021 1826

USGS National Map 3D Elevation Program (3DEP) County of Eagle, Colorado, Garmin, SafeGraph, METI, NASA, USGS, Bureau of Land Management, EPA, NPS, USDA

North American 1983 Datum.