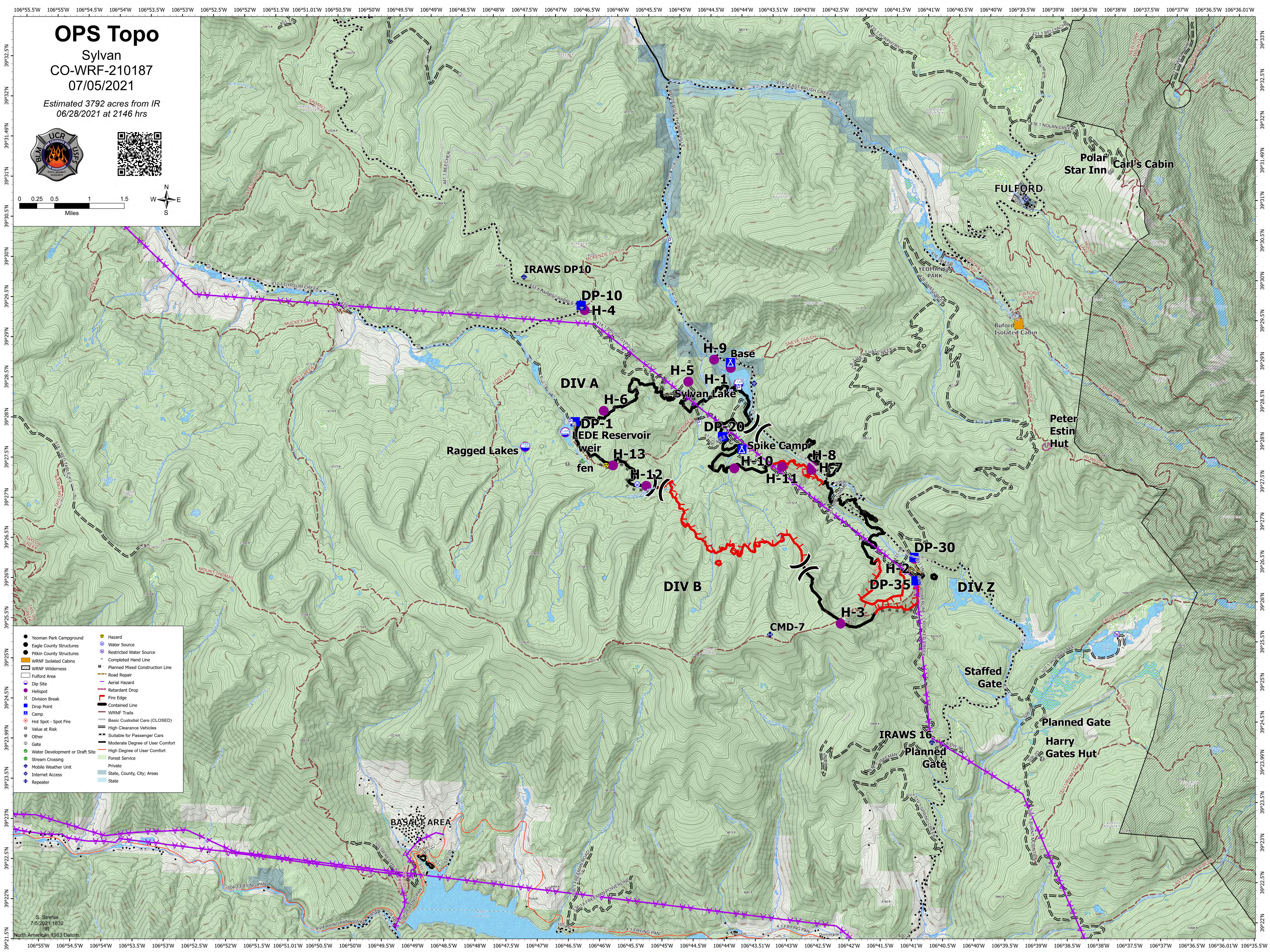
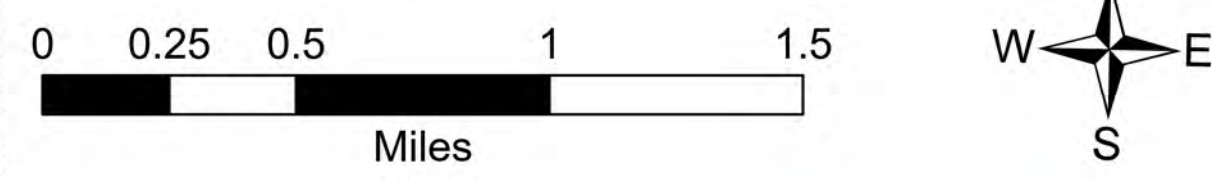


OPS Topo

Sylvan
CO-WRF-210187
07/05/2021

Estimated 3792 acres from IR
06/28/2021 at 2146 hrs



- | | |
|-----------------------------------|-----------------------------------|
| ● Yeoman Park Campground | ⚠ Hazard |
| ● Eagle County Structures | 📍 Water Source |
| ● Pitkin County Structures | 📍 Restricted Water Source |
| 🏠 WRNF Isolated Cabins | 📍 Completed Hand Line |
| 🏠 WRNF Wilderness | 📍 Planned Mixed Construction Line |
| 🏠 Fulford Area | 📍 Road Repair |
| 📍 Dip Site | 📍 Aerial Hazard |
| 📍 Helispot | 📍 Retardant Drop |
| 📍 Division Break | 📍 Fire Edge |
| 📍 Drop Point | 📍 Contained Line |
| 📍 Camp | 📍 WRNF Trails |
| 📍 Hot Spot - Spot Fire | 📍 Basic Custodial Care (CLOSED) |
| 📍 Value at Risk | 📍 High Clearance Vehicles |
| 📍 Other | 📍 Suitable for Passenger Cars |
| 📍 Gate | 📍 Moderate Degree of User Comfort |
| 📍 Water Development or Draft Site | 📍 High Degree of User Comfort |
| 📍 Stream Crossing | 📍 Forest Service |
| 📍 Mobile Weather Unit | 📍 Private |
| 📍 Internet Access | 📍 State, County, City, Areas |
| 📍 Repeater | 📍 State |

S. Strettle
7/5/2021 1832
IR
North American 1983 Datum