

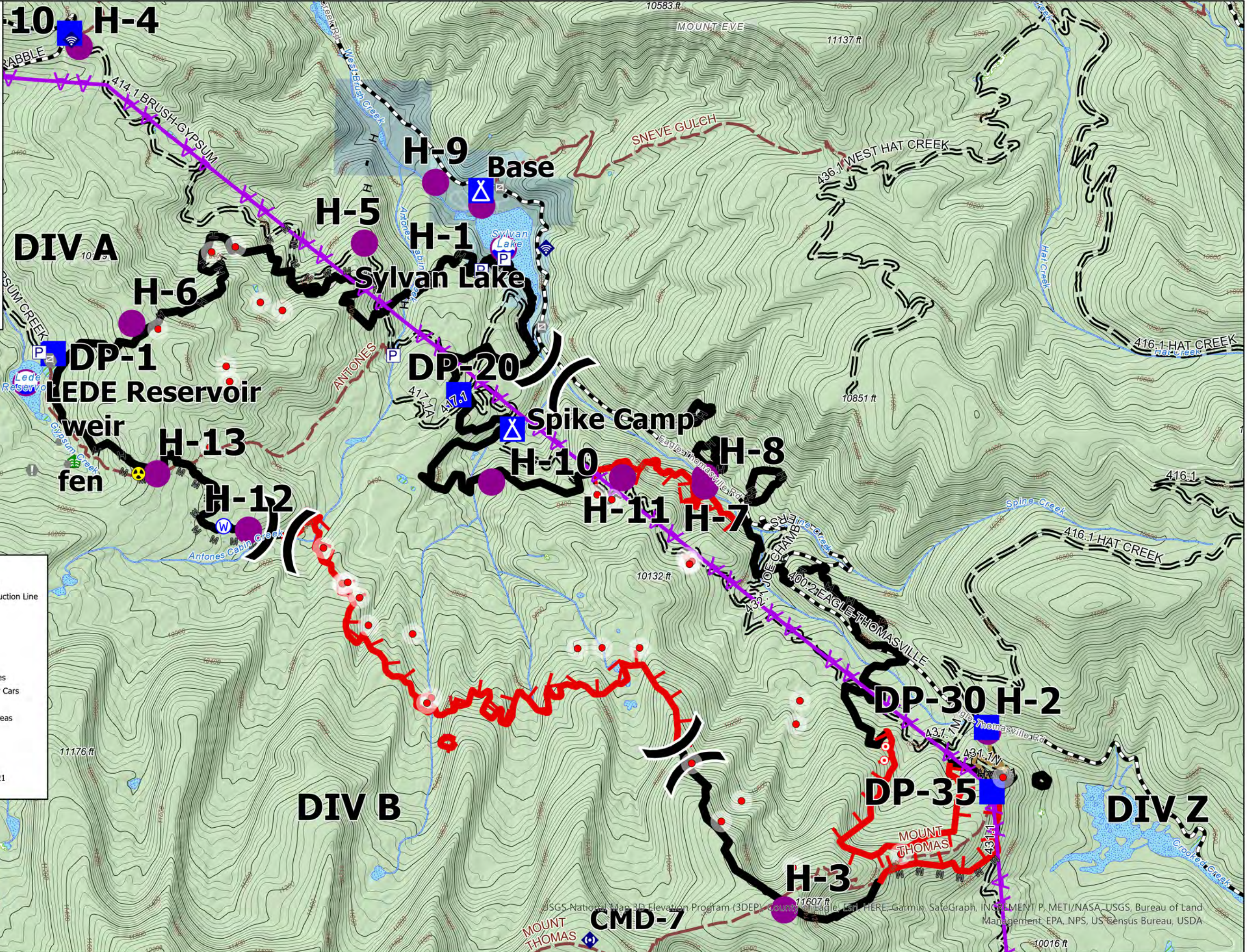
OPS Topo

Sylvan
CO-WRF-210187
07/06/2021

Estimated 3792 acres from IR at
06/28/2021 at 2146 hrs



0 0.25 0.5 Miles



- | | |
|-----------------------------------|-----------------------------------|
| ● Eagle County Structures | Ⓜ Pump |
| ○ Dip Site | H Completed Hand Line |
| ● Helispot | Ⓜ Planned Mixed Construction Line |
| X Division Break | Ⓜ Road Repair |
| ■ Drop Point | Ⓜ Aerial Hazard |
| Ⓜ Camp | Ⓜ Fire Edge |
| ○ Hot Spot - Spot Fire | Ⓜ Contained Line |
| ● Value at Risk | Ⓜ WRNF Trails |
| ● Other | Ⓜ High Clearance Vehicles |
| Ⓜ Gate | Ⓜ Suitable for Passenger Cars |
| ● Water Development or Draft Site | Ⓜ Forest Service |
| ● Stream Crossing | Ⓜ State, County, City, Areas |
| ● Mobile Weather Unit | Ⓜ State |
| ● Internet Access | Points |
| ● Repeater | SymbolID |
| ● Hazard | ● Isolated Heat IR 7/6/21 |
| ● Water Source | |

MOUNT THOMAS
S. Strehle
7/6/2021-1825
North American 1983 Datum.