

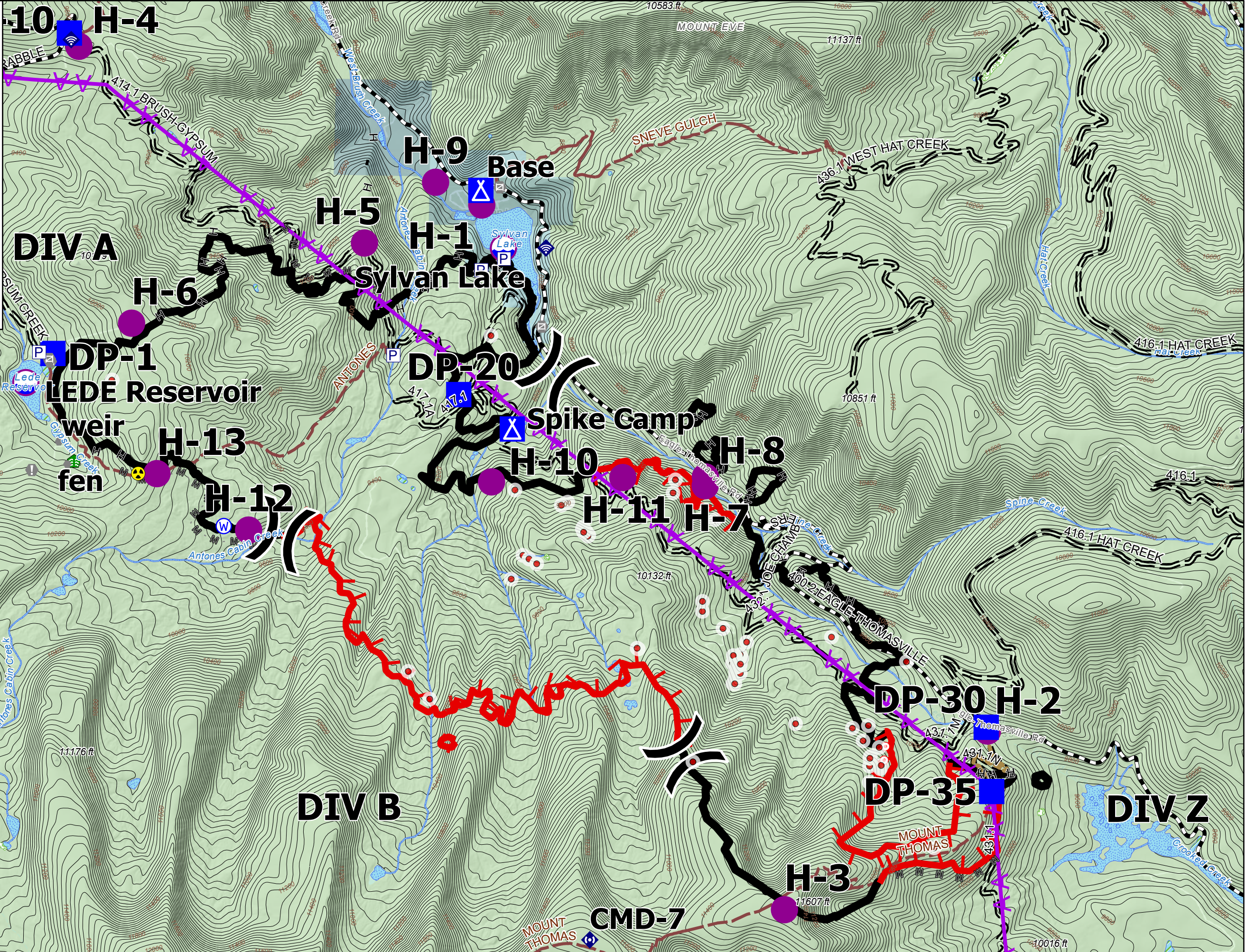
# OPS Topo

Sylvan  
CO-WRF-210187  
07/09/2021

Estimated 3792 acres from IR at  
06/28/2021 at 2146 hrs



0 0.25 0.5  
Miles



- 20210708 MMA Sylvan Isolated Heat
- Isolated Heat
  - Eagle County Structures
  - Dip Site
  - Helispot
  - ⌋ Division Break
  - Drop Point
  - ▲ Camp
  - Hot Spot - Spot Fire
  - Value at Risk
  - Other
  - ⊕ Gate
  - Water Development or Draft Site
  - Stream Crossing
  - Mobile Weather Unit
  - Internet Access
  - Repeater
  - Hazard
  - Water Source
  - Pump
  - Completed Hand Line
  - Planned Mixed Construction Line
  - Road Repair
  - Aerial Hazard
  - Fire Edge
  - Contained Line
  - WRNF Trails
  - High Clearance Vehicles
  - Suitable for Passenger Cars
  - Forest Service
  - State, County, City, Areas
  - State

S. Strehle  
7/8/2021 1610  
North American 1983 Datum.