

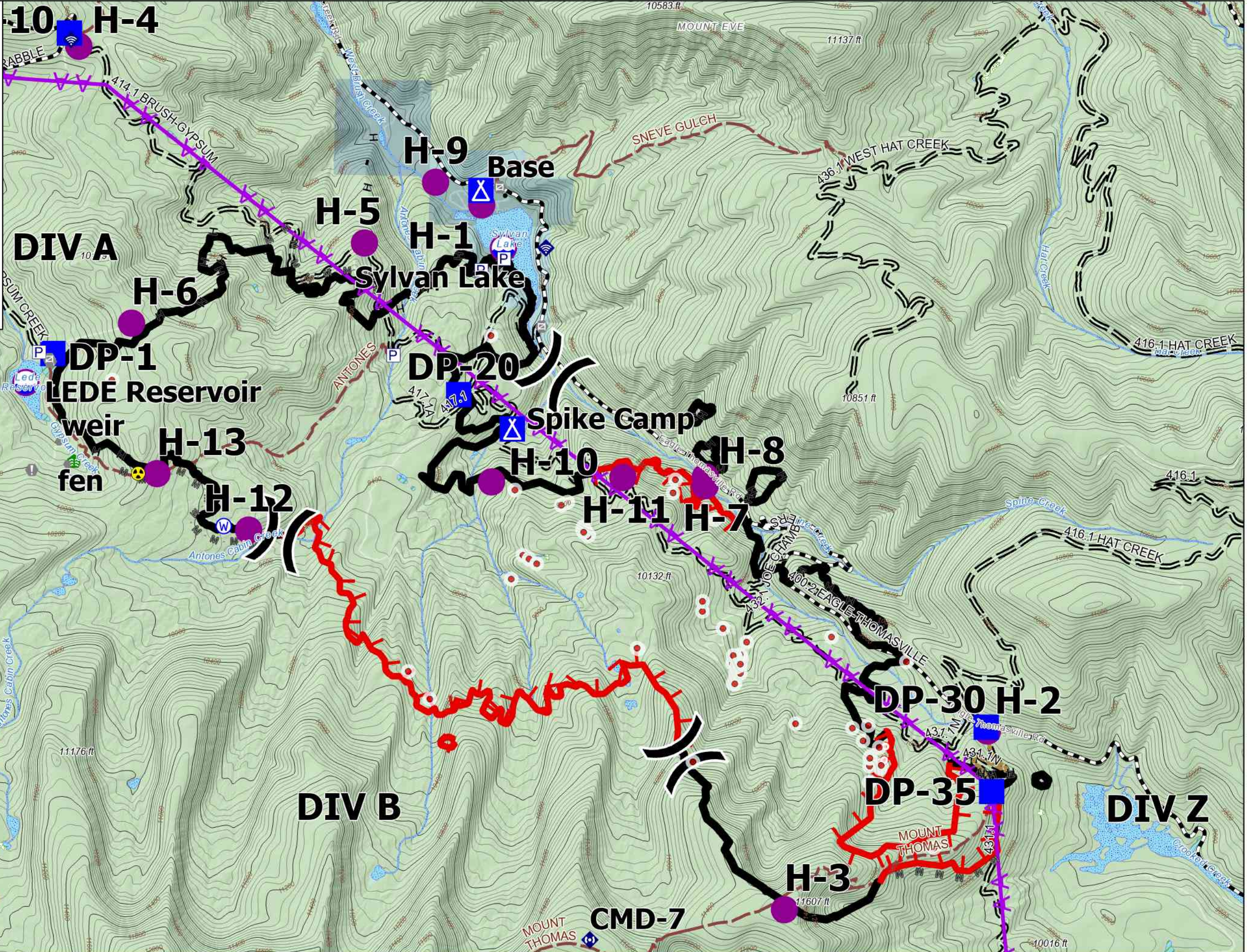
# OPS Topo

Sylvan  
CO-WRF-210187  
07/09/2021

Estimated 3792 acres from IR at  
06/28/2021 at 2146 hrs



0 0.25 0.5 Miles



### 20210708 MMA Sylvan Isolated Heat

- Isolated Heat
- Eagle County Structures
- Dip Site
- Helispot
- X Division Break
- Drop Point
- ▲ Camp
- Hot Spot - Spot Fire
- Value at Risk
- Other
- Gate
- Water Development or Draft Site
- Stream Crossing
- Mobile Weather Unit
- Internet Access
- Repeater
- Hazard
- Water Source
- Pump
- H Completed Hand Line
- M Planned Mixed Construction Line
- Road Repair
- Aerial Hazard
- Fire Edge
- Contained Line
- WRNF Trails
- High Clearance Vehicles
- Suitable for Passenger Cars
- Forest Service
- State, County, City, Areas
- State

THOMAS  
S. Strehle  
7/8/2021 1612  
North American 1983 Datum