

Air Ops Map

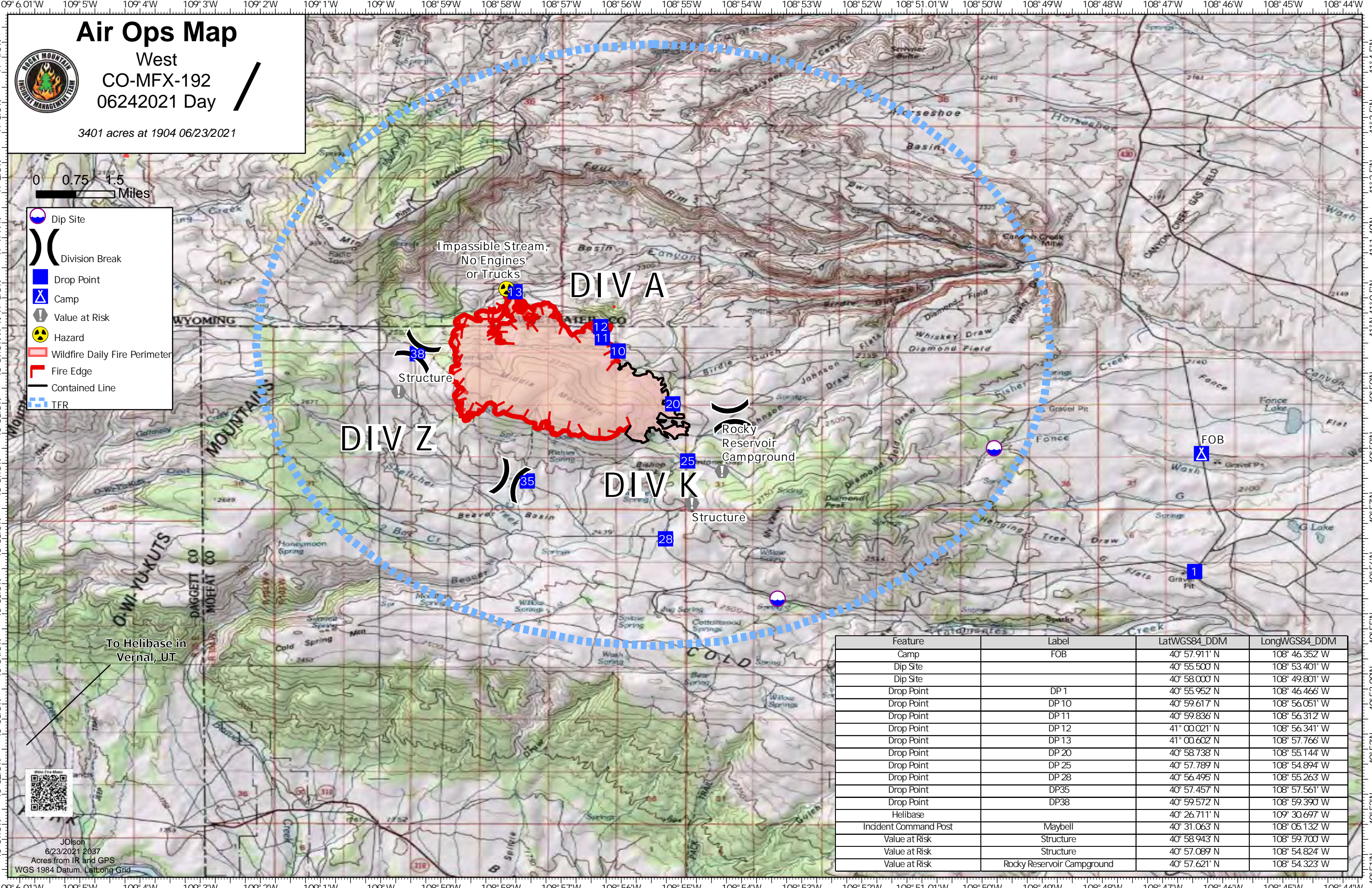
West
CO-MFX-192
06242021 Day

3401 acres at 1904 06/23/2021



0 0.75 1.5
Miles

- Dip Site
- Division Break
- Drop Point
- Camp
- Value at Risk
- Hazard
- Wildfire Daily Fire Perimeter
- Fire Edge
- Contained Line
- TFR



Feature	Label	LatWGS84_DDM	LongWGS84_DDM
Camp	FOB	40° 57.911' N	108° 46.352' W
Dip Site		40° 55.500' N	108° 53.401' W
Dip Site		40° 58.000' N	108° 49.801' W
Drop Point	DP 1	40° 55.952' N	108° 46.466' W
Drop Point	DP 10	40° 59.617' N	108° 56.051' W
Drop Point	DP 11	40° 59.836' N	108° 56.312' W
Drop Point	DP 12	41° 00.021' N	108° 56.341' W
Drop Point	DP 13	41° 00.602' N	108° 57.766' W
Drop Point	DP 20	40° 58.738' N	108° 55.144' W
Drop Point	DP 25	40° 57.789' N	108° 54.894' W
Drop Point	DP 28	40° 56.495' N	108° 55.263' W
Drop Point	DP35	40° 57.457' N	108° 57.561' W
Drop Point	DP38	40° 59.572' N	108° 59.390' W
Helibase		40° 26.711' N	109° 30.697' W
Incident Command Post	Maybell	40° 31.063' N	108° 05.132' W
Value at Risk	Structure	40° 58.943' N	108° 59.700' W
Value at Risk	Structure	40° 57.089' N	108° 54.824' W
Value at Risk	Rocky Reservoir Campground	40° 57.621' N	108° 54.323' W



JOlson
6/23/2021 2037
Acres from IR and GPS
WGS 1984 Datum, Lat/long Grid