

BOVEE FIRE

NE-NBF-220792 - P2 P24S (0207)[P]

TUESDAY, OCTOBER 4, 2022

Day / Night Operational Period 0700 – 0700



Rocky Mountain CIMT1

Dan Dallas, IC

Bill Hahnberg, Deputy IC

Phil Daniels, CIM IC

INCIDENT INFORMATION: 402.302.0368



IAP & MAPS



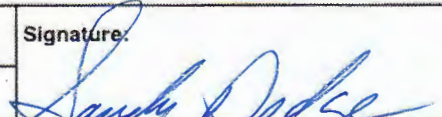
CHECK IN



INCIDENT OBJECTIVES (ICS 202)

1. Incident Name:	2. Operational Period:	
BOVEE	Date/Time From: 10/04/2022 0700 TUE	Date/Time To: 10/05/2022 0700 WED
3. Objective(s):		
Objectives for Firefighters and Public Safety		
<ul style="list-style-type: none"> • Minimize risks to the public through the implementation of evacuations and area and road closures. • Reduce risk to incident personnel through strategic risk management processes. Develop a strategic operational plan and amend as needed based on subsequent risk analysis. • Minimize the spread of COVID-19 and other infectious diseases by following CDC guidance and practicing good hygiene practices. 		
Objectives for Protection of Values at Risk		
<ul style="list-style-type: none"> • Minimize impacts on residences, cattle and grazing, Bessey Nursery, and critical community infrastructure. • Reduce potential adverse health, social, financial, and economic hardships. 		
Objectives for Information and Relationships		
<ul style="list-style-type: none"> • Provide information to all agencies, media, the public, partners, cooperators, local government, law enforcement, and landowners. • Maintain and enhance relationships with adjoining agencies, cooperators, stakeholders, permittees, and local communities. 		
4. Operational Period Command Emphasis:		
<ol style="list-style-type: none"> 1. Manage risk to firefighters by ensuring hazards are identified, assessed, and, where possible, mitigated. Be prepared to accept residual risk when values threatened warrant it and the probability of achieving objectives is high. 2. Utilize strategies and tactics that commit responders only to the operations where and when they can be successful, and under conditions where important values at risk are protected with the least exposure necessary. 3. Coordinate and communicate with displaced residents, local cooperators, stakeholders, and media regarding the fire situation using media, press releases, social media, and personal contacts. 4. Contain and control portions of the fire that are a threat to identified values to be protected. 5. Mop-up to the extent necessary to prevent the escape of the fire to prevent additional spread or damage to other values within the perimeter. 6. Implement practices that reduce the potential for spread of COVID-19 and other infectious diseases, such as distributive operations and adhering to COVID-19 mitigations, that improve the health environment for firefighters, support personnel, and the public by ensuring the introduction of additional firefighting forces do not become vectors for the spread of disease among resident populations. 		
General Situational Awareness:		
<ol style="list-style-type: none"> 1. Today is a transition day know who you are working for. 2. Complete a size-up of your work area and surrounding areas to mitigate hazards. 3. Be prepared for changing weather conditions and constantly monitor conditions. 4. Prevent transmission of infectious disease by practicing good personal hygiene and following COVID-19 protocols. 		
7. Prepared by: AUSTIN BAKER	Position/Title: PSC 1	Signature: 
8. Approved by Incident Commander:	Name: PHIL DANIELS	Signature: 
ICS 202	IAP Page	Date/Time: 10/03/2022 1900

ORGANIZATION ASSIGNMENT LIST (ICS 203)

1. Incident Name:		2. Operational Period:			
BOVEE		Date/Time From: 10/04/2022 0700 TUE		Date/Time To: 10/05/2022 0700 WED	
3. Incident Commander(s) and Command Staff:			7. Operations Section:		
INCIDENT COMMANDER	DAN DALLAS	LEAD OPS	SCOTT BEACHAM		
CIM INCIDENT COMMANDER	PHIL DANIELS	FIELD OPS	TRAVIS LIPP MATT HOLTE (T)		
DEPUTY	BILL HAHNENBERG	PLANNING OPS	TOM BARTER		
SAFETY OFFICER	JAMIE MUNNS TODD LEGLER (V)				
INFORMATION OFFICER	BRENDA BOWEN MICHELLE EHN KELLY	DIVISION/GROUP	ALPHA	CODY ROSE	
LIAISON OFFICER	TAMERA RANDALL-PARKER ADAM SMITH	DIVISION/GROUP	LIMA	TIM DALY	
		DIVISION/GROUP	ZULU	FRANK KEELER	
		DIVISION/GROUP	STRUCTURE	TED CHRISTOPOULOS	
		DIVISION/GROUP	NIGHT	MATT WEAKLAND	
4. Agency/Organization Representative(s):			7b. Air Operations Branch:		
Agency/Organization	Name	AIR OPS BRANCH DIRECTOR	CAROLYN BLATZ		
NEBRASKA NF	STEVE KOZEL JULIE BAIN (T)	AIR SUPPORT SUPERVISOR	NATE ALEXANDER		
NEMA	CHRIS SCHROEDER STENA SEAMANN				
5. Planning Section:			8. Finance/Administration Section:		
CHIEF	AMY RUSSELL STEPHEN PETERSBURG	CHIEF	DAVID LUCAS MEGAN JACKSON (V)		
DEPUTY	AUSTIN BAKER	TIME UNIT	AARON RASMUSSEN		
RESOURCES UNIT	SANDY DODGE; DARBY JOHNSON (V) GWEN TALLMADGE (T)	PROCUREMENT UNIT	BRIAN MCCABE (V)		
SITUATION UNIT	NATE WILLIAMSON	COMPENSATION UNIT	CASEY WARREN		
DEMOBILIZATION UNIT	GAYLE LAURENT	COST UNIT	KATHY SUTPHEN (V) MICHAEL JACOBS (V) (T)		
GIS SPECIALIST	JENNIFER AVESING TONY SMITH				
TECHNOLOGY SUPPORT SPECIALIST	MARTIN KREPFL				
INCIDENT METEOROLOGIST	DARREN CLABO				
6. Logistics Section:					
CHIEF	KEITH PLAGEMANN ROY SPENCER (T) KEN HEHR (T)				
SUPPLY UNIT	MONTY BOLLOCK				
FACILITIES UNIT	JASON GROSS				
COMMUNICATIONS UNIT	VANCE ANDERSEN				
MEDICAL UNIT	GREG BERGIN KIRBY CLOCK				
FOOD UNIT	COLLEEN GALLAGHER				
9. Prepared By: Name: SANDY DODGE		Position/Title: RESL		Signature:	
ICS 203	IAP Page	Date/Time: 10/03/2022 2200			

Incident Weather Forecast

INCIDENT: Bovee Wildfire

PREPARED BY: Darren Clabo IMET

FORECAST: #1

VALID: 4 October 2022 Day/Night Operational Period

DATE/TIME ISSUED: Monday 3 October 2022 2000 MDT

WEATHER DISCUSSION:

A weak low pressure system will track over the NE/SD border today bringing isolated showers and thunderstorms to the area. Overall precipitation amounts and storm coverage will be less than what we saw yesterday. Temperatures will be in the upper 60s to near 70 while minimum RH drops to 40%. Winds will be out of the northwest with gusts to 20 mph. Relative humidity will recover to near 100% overnight tonight with low temperatures in the 40s.

WEATHER FORECAST:

Tuesday

Sky Weather: Mostly cloudy. A
40% chance of showers.

Temperature: Max 68 F

Humidity: Min 40%

20 ft Winds: NW @ 5-15 mph,
gusts to 20 mph

Transport Wind: NW @ 15 mph

CWR: 30% **LAL:** 2

Mixing Height: Increasing to
5,000 ft AGL.

Inversion: Inversion to break
around 1100 hrs.

Tuesday Night

Sky Weather: Clearing.

Temperature: Min 45 F

Humidity: Max 95%

20 ft Winds: NW @ 5 mph

Transport Wind: NW @ 5 mph

CWR: 0% **LAL:** 1

Inversion: Weak inversion to
form overnight

Wednesday

Sky Weather: Mostly sunny.

Temperature: Max 70 F

Humidity: Min 40%

20 ft Winds: NW @ 10-20 mph,
gusts to 25 mph

Transport Wind: NW @ 20 mph

CWR: 0% **LAL:** 1

Mixing Height: Increasing to
6,000 ft AGL.

Inversion: Inversion to break
around 1100 hrs.

EXTENDED FORECAST:

A cold front will move through the area on Thursday leading to breezy northeast winds through the day. High temperatures will be in the upper 50s while minimum RH falls into the 40-50% range. Skies will be partly cloudy to mostly clear. Temperatures will be even cooler on Friday with highs in the lower 50s with a chance of showers once again. Light south winds are expected. Temperatures will warm back into the 60s and 70s for the weekend.

/s/ Darren Clabo, IMET

Division/Group Assignment List (ICS 204 WF)

Controlled Unclassified Information//Basic

1. Incident Name:			3.			
BOVEE			Branch:		Division/Group	
2. Operational Period:			ALPHA			
Date/Time From: 10/04/2022 0700 TUE	Date/Time To: 10/05/2022 0700 WED					
4. Operations Personnel						
FIELD OPS		TRAVIS LIPP MATT HOLTE (T)		PLANNING OPS		
				SCOTT BEACHAM TOM BARTER		
DIVISION/GROUP SUPERVISOR		CODY ROSE		AIR ATTACK SUPERVISOR		
5. Resources Assigned this Period						
Strike Team / Task Force / Resource Designator		LWD	Leader	Number Persons	Drop Off PT./Time	Pick Up PT./Time
C-2 CRW1 ALPINE IHC		10/05	JAMES CHAMP	19	THEDFORD FG/0700	THEDFORD FG/2000
C-1 CR2I TATANKA		10/16	JOSH BALL	10	THEDFORD FG/0700	THEDFORD FG/2000
C-5 CRW2 SOLDIER CREEK 1		10/17	DAYTON CLEVELAND	11	THEDFORD FG/0700	THEDFORD FG/2000
* O-36 WFM1 BLACK HILLS		10/17	LEE DUEKER	5	THEDFORD FG/0700	THEDFORD FG/2000
* E-4 ENG6 BKF 682		10/17	BRANDON FISCHER	3	THEDFORD FG/0700	THEDFORD FG/2000
* E-5 ENG6 BKF 611		10/17	CHANCE GILES	3	THEDFORD FG/0700	THEDFORD FG/2000
E-11 DZR2 SD STATE		10/17		2	THEDFORD FG/0700	THEDFORD FG/2000
E-12 DZR2 YODER COWBOY 3		10/17	LUKE CHAIRES	2	THEDFORD FG/0700	THEDFORD FG/2000
6. Control Operations/Work Assignments:						
TASK: Construct direct and indirect fireline from 203 Road to Middle Loup River. PURPOSE: Keep fire from impacting values at risk. END: Fireline is in the correct location with the right dimensions to contain the fire.						
7. Special Instructions:						
• Indicates IA Resources.						
8. Division/Group Communication Summary						
Function	Channel	RX Frequency N/W	RX Tone/NAC	TX Frequency N/W	TX Tone/NAC	Mode
COMMAND	SEE COMM PLAN					
9. Prepared By (Resource Unit Leader)			Approved By (Planning Section Chief)		Date	Time
SANDY DODGE <i>Sandy Dodge</i>			AUSTIN BAKER <i>Austin Baker</i>		10/03/2022	2200

Division/Group Assignment List (ICS 204 WF)

Controlled Unclassified Information//Basic

1. Incident Name:			3.			
BOVEE			Branch:		Division/Group	
2. Operational Period:					LIMA	
Date/Time From: 10/04/2022 0700 TUE	Date/Time To: 10/05/2022 0700 WED					
4. Operations Personnel						
FIELD OPS		TRAVIS LIPP MATT HOLTE (T)		PLANNING OPS	SCOTT BEACHAM TOM BARTER	
DIVISION/GROUP SUPERVISOR		TIM DALY		AIR ATTACK SUPERVISOR		
5. Resources Assigned this Period						
Strike Team / Task Force / Resource Designator	LWD	Leader	Number Persons	Drop Off PT./Time	Pick Up PT./Time	
E-15 ENG3 MOUNTAIN VIEW 2233	10/17	BEN CARTER	4	THEDFORD FG/0700	THEDFORD FG/2200	
* E-16 ENG3 DFPC 3141	10/17	CODY RITTER	4	THEDFORD FG/0700	THEDFORD FG/2200	
E-8 ENG6 NORTH METRO U-15	10/17	CHAZ GROSS	3	THEDFORD FG/0700	THEDFORD FG/2200	
E-9 ENG6 LYONS FPD 4033	10/17	RICH PALESTRO	3	THEDFORD FG/0700	THEDFORD FG/2200	
E-10 ENG6 LCFA WILDLAND 741	10/17	DUSTIN BROWN	3	THEDFORD FG/0700	THEDFORD FG/2200	
ENG6 THEDFORD	10/16		3	THEDFORD FG/0700	THEDFORD FG/2200	
WTS2 THEDFORD	10/16		1	THEDFORD FG/0700	THEDFORD FG/2200	
6. Control Operations/Work Assignments:						
TASK: Patrol and secure fireline within the Division.						
PURPOSE: Keep fire from impacting values at risk.						
END: Flames and smokes are not a threat to escape fireline.						
7. Special Instructions:						
• Indicates IA Resources.						
8. Division/Group Communication Summary						
Function	Channel	RX Frequency N/W	RX Tone/NAC	TX Frequency N/W	TX Tone/NAC	Mode
COMMAND	SEE COMM PLAN					
9. Prepared By (Resource Unit Leader)			Approved By (Planning Section Chief)		Date	Time
SANDY DODGE			AUSTIN BAKER		10/03/2022	2200

Division/Group Assignment List (ICS 204 WF)

Controlled Unclassified Information//Basic

1. Incident Name:			3.			
BOVEE			Branch:		Division/Group	
2. Operational Period:			ZULU			
Date/Time From: 10/04/2022 0700 TUE		Date/Time To: 10/05/2022 0700 WED				
4. Operations Personnel						
FIELD OPS		TRAVIS LIPP MATT HOLTE (T)		PLANNING OPS		SCOTT BEACHAM TOM BARTER
DIVISION/GROUP SUPERVISOR		FRANK KEELER		AIR ATTACK SUPERVISOR		
5. Resources Assigned this Period						
Strike Team / Task Force / Resource Designator		LWD	Leader	Number Persons	Drop Off PT./Time	Pick Up PT./Time
C-3 CR2I SHADOW CANYON		10/17	MICHAEL PALAMARA	22	THEDFORD FG/0700	THEDFORD FG/2200
C-4 CR2I MBR NF 1		10/17	CHRIS GREEN	21	THEDFORD FG/0700	THEDFORD FG/2200
ENG6 ENGINE 761		10/16	CORY RICHARDSON	3	THEDFORD FG/0700	THEDFORD FG/2200
ENG6 ENGINE 651		10/16	JUSTIN EVANS	3	THEDFORD FG/0700	THEDFORD FG/2200
SKD USFS		10/16	TYLER HUNTER	1	THEDFORD FG/0700	THEDFORD FG/2200
6. Control Operations/Work Assignments:						
<p>TASK: Construct direct and indirect fireline.</p> <p>PURPOSE: Keep fire from impacting values at risk.</p> <p>END: Fireline is in the correct location with the right dimensions to contain the fire.</p>						
7. Special Instructions:						
8. Division/Group Communication Summary						
Function	Channel	RX Frequency N/W	RX Tone/NAC	TX Frequency N/W	TX Tone/NAC	Mode
COMMAND	SEE COMM PLAN					
9. Prepared By (Resource Unit Leader)			Approved By (Planning Section Chief)		Date	Time
SANDY DODGE <i>Sandy Dodge</i>			AUSTIN BAKER <i>Austin Baker</i>		10/03/2022	1631

Division/Group Assignment List (ICS 204 WF)
Controlled Unclassified Information//Basic

1. Incident Name:			3.			
BOVEE			Branch:		Division/Group	
2. Operational Period:			NIGHT			
Date/Time From: 10/04/2022 0700 TUE		Date/Time To: 10/05/2022 0700 WED				
4. Operations Personnel						
DIVISION/GROUP SUPERVISOR		MATT WEAKLAND				
5. Resources Assigned this Period						
Strike Team / Task Force / Resource Designator		LWD	Leader	Number Persons	Drop Off PT./Time	Pick Up PT./Time
E-2 ENG6 SDS 654		10/16	SETH STEVENS	3	THEDFORD FG/1700	THEDFORD FG/0700
6. Control Operations/Work Assignments:						
TASK: Patrol and secure fireline. PURPOSE: Protect values at risk. END STATE: Fire is patrolled for threatening fires and smokes.						
7. Special Instructions:						
8. Division/Group Communication Summary						
Function	Channel	RX Frequency N/W	RX Tone/NAC	TX Frequency N/W	TX Tone/NAC	Mode
COMMAND	SEE COMM PLAN					
9. Prepared By (Resource Unit Leader)			Approved By (Planning Section Chief)		Date	Time
SANDY DODGE <i>Sandy Dodge</i>			AUSTIN BAKER <i>Austin Baker</i>		10/03/2022	2200

Division/Group Assignment List (ICS 204 WF)

Controlled Unclassified Information//Basic

1. Incident Name:			3.			
BOVEE			Branch:		Division/Group	
2. Operational Period:			STRUCTURE			
Date/Time From: 10/04/2022 0700 TUE		Date/Time To: 10/05/2022 0700 WED				
4. Operations Personnel						
FIELD OPS		TRAVIS LIPP MATT HOLTE (T)		PLANNING OPS		SCOTT BEACHAM TOM BARTER
DIVISION/GROUP SUPERVISOR		TED CHRISTOPOULOS		AIR ATTACK SUPERVISOR		
5. Resources Assigned this Period						
Strike Team / Task Force / Resource Designator		LWD	Leader	Number Persons	Drop Off PT./Time	Pick Up PT./Time
O-9 SMOD PIKE SUPPRESSION		10/17	DREW GILLETTE	11	THEDFORD FG/0700	THEDFORD FG/2200
E-17 ENG4 NATIONAL WILDLAND FIRE		10/17	AUSTIN MARTIN	3	THEDFORD FG/0700	THEDFORD FG/2200
E-18 ENG4 LITE EM UP		10/17	BOB VIGER	3	THEDFORD FG/0700	THEDFORD FG/2200
* E-1 ENG6 SDS 642		10/16	BENJAMIN MAISEL	2	THEDFORD FG/0700	THEDFORD FG/2200
E-7 ENG6 LITE EM UP		10/17	RAY BESSE	3	THEDFORD FG/0700	THEDFORD FG/2200
E-27 ENG6 GERING - 21		10/17	TIM MILTON	3	THEDFORD FG/0700	THEDFORD FG/2200
ENG6 ENGINE 791		10/16	ERIK DANKO	3	THEDFORD FG/0700	THEDFORD FG/2200
6. Control Operations/Work Assignments:						
<p>TASK: Locate assess and prep structures within the Division.</p> <p>PURPOSE: Identify mitigation needs to protect structures.</p> <p>END STATE: Structures are defensible.</p>						
7. Special Instructions:						
<ul style="list-style-type: none"> • Indicates IA Resources. 						
8. Division/Group Communication Summary						
Function	Channel	RX Frequency N/W	RX Tone/NAC	TX Frequency N/W	TX Tone/NAC	Mode
COMMAND	SEE COMM PLAN					
9. Prepared By (Resource Unit Leader)			Approved By (Planning Section Chief)		Date	Time
SANDY DODGE <i>Sandy Dodge</i>			AUSTIN BAKER <i>AB</i>		10/03/2022	2200

INCIDENT RADIO COMMUNICATIONS PLAN (ICS 205)

Controlled Unclassified Information/Basic

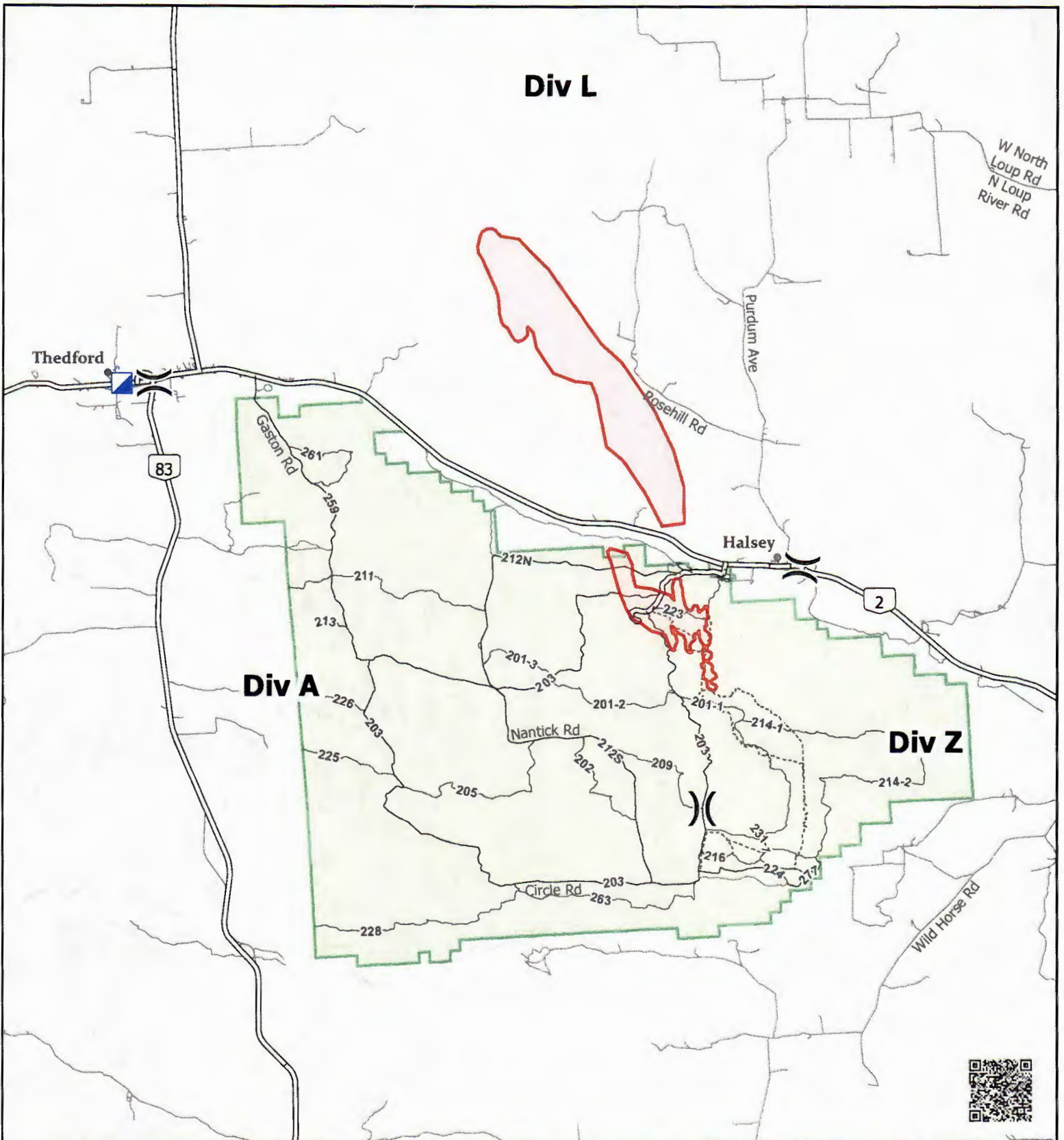
1. Incident Name:		2. Date/Time Prepared:		3. Operational Period:	
BOVEE		Date: 10/03/2022	Date/Time From: 10/04/2022 0700	Date/Time To: 10/05/2022 0700	WED
		Time: 1915	TUE		

4. Basic Radio Channel Use:

Zone Group	Ch #	Function	Channel Name/Trunked Radio System Talkgroup	Assignment	RX Freq	RX Tone/NAC	TX Freq	TX Tone/NAC	Mode (A, D, or M)	Remarks
11	1	COMMAND	EAST DIRECT	ALL DIVISIONS	172.3250 N	103.5	172.3250 N	103.5	A	Comms with ICP, Bessey Office, and Great Plains Di
11	2	TACTICAL	WORK	STRUCTURE GROUP	168.6125 N	110.9	168.6125 N	110.9	A	Structure Group Tactical
11	3	TACTICAL	NEBRASKA TAC	DIVISION A	168.1250 N		168.1250 N		A	Division A Tactical
11	7	AIR TO GROUND	A/G 25	ALL GROUPS	168.7500 N		168.7500 N		A	Air to Ground Operations
11	8	COMMAND	R26THED	ALL DIVISIONS	155.4900 N	D125	158.9100 N	D114	D	Medical, VFD, or Law Enforcement
11	11	TACTICAL	E. PORTABLE RPT.	DIVISION Z	172.3250 N		164.8250 N	156.7	A	Division Z Tactical
11	12	TACTICAL	VTAC 11	DIVISION L	151.1375 N	156.7	151.1375 N	156.7	A	Division L Tactical
11	13	TACTICAL	VTAC 12	NIGHT	154.4525 N	156.7	154.4525 N	156.7	A	Night Tactical

5. Special Instructions:

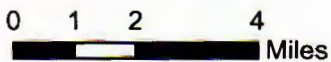
6. Prepared By	(Communications Unit Leader)	Name: LOREN EATON
Signature:		Signature:
ICS 205	IAP Page	Date/Time: 10/03/2022 1915



Transportation

Bovee
 NENBF220792
 Oct. 4, 2022 Day

7,780 acres at 10/02/22 1930



- Division Break
- Incident Command Post
- ATV Trail
- Local Road
- NFS Road

- Highway
- Wildfire Perimeter
- NFS Lands
- Forest Admin Boundary

prking
 10/3/2022 1842
 Acres from IR (NFG)



BOVEE FIRE FINANCE PROCEDURES

Finance Email: 2022.bovee.finance@firenet.gov

FINANCE HELP HOTLINE: **720-693-2307**

Overhead, Crews, Contractors, and Cooperator Resources
Send Check-in Docs and Daily Time To:
2022.bovee.finance@firenet.gov

IN THE SUBJECT LINE: Include Key Words to ensure proper delivery
Key Word **TIME** for *Overhead, Agency Crews & Cooperators*
Key Word **PROC** for *Contractors*

Or Scan the appropriate QR Code below with Subject Pre-Filled:

PROC



TIME



FINANCE PROCEDURES:

If you have not already done so, please submit all CTR's and Shift Tickets, along with your equipment agreements (CRRF, VIPR, EERA, etc.), crew manifests, engine/equipment rosters as soon as possible to prevent processing delays.

Please write your Resource Number (RO#) on all documents, as well as a phone number or email address where we can reach you. If you do not have a Resource Number, clearly print your name, company/department name, and any equipment make/model and type of equipment on your time documents. This will ensure accurate processing and will prevent issues when you demobilize.

If you have any questions, need assistance filling out or submitting documentation, email or call the Finance Hotline and someone will gladly help you.

Thank you from your Friendly Finance Section! We appreciate your help in keeping your records accurate!



HEALTH AND SAFETY MESSAGE

Communicate – Collaborate – Coordinate – Cooperate

Redeem personal and professional responsibilities to care for your self and those you are responsible for.

INCIDENT: Bovee Fire

DATE: 10/4/22

Shift: Day and Night

Major Hazards and Risks:

- **Communications and transition**
- **Unrehearsed Medical Response**
- **Manage hazards and risks associated with the Wildland Urban Interface (WUI)**
- **Hazard Trees**
- **Driving**

Communications and transition

- The repeater is down, and cell service is marginal, it is also a transition period. Ensure you know who you are working for, receive a good briefing, know the frequency your division is working on, and share phone numbers as a backup.

“What will you do if someone gets hurt?” – Remember Andy Palmer

- Medical emergencies can occur in at any time – don’t get caught unprepared.
 - Take time to review the medical plan and medical incident report.
 - Know where the closet medical equipment, personnel and medivac spot at all times.
 - When did you and your crew last train with an Incident Within an Incident (IWI)?

WUI Hazards

- Do not park near or under powerlines, assume all powerlines are energized. Watch for propane and fuel tanks, avoid breathing hazardous smoke, watch for septic tanks. Request a HAZMAT team for significant areas of concern e.g., commercial building sites.

Hazard Trees

- Fire weakened trees have been heard and seen falling in the fire area. Fire weakened trees have injured and killed several firefighters. Ensure a good size up of your work area is completed prior to engagement. Flag off or call for a dozer to push the tree over.

Driving

- There are numerous driving hazards on this incident that require you to drive slowly: low visibility due to dirt and ash, silt build up on roads, cattle or deer on the road, downed powerlines, snags next to the road, trains traffic, civilian & ranch traffic. Scout soft roads on foot or UTV prior to driving.

Safety Officers: Mark Munns and Todd Legler

**FIREFIGHTER HEALTH
EXPECTATIONS AND PROCEDURES**

To maintain the overall health of our community of responders ALL PERSONNEL SHALL:

- Use the **ILLNESS SCREENING TOOL** to perform a self-check daily, before shift
- Wash hands with soap and water or hand sanitizer regularly
- Keep 6' distance from those not in your *Module as One*
- Designate as few people as possible to pick up meals for all
- Limit number of resources at briefings and meetings; attend remotely when possible

ILLNESS SCREENING TOOL

If answer is "YES" for any symptom listed below, please take these steps

1. Don a mask and stay six feet from other personnel
2. Inform your supervisor
3. Call **(720) 693-4237** to determine next steps

Today or in the past 72 hours, have you had any of the following symptoms, *and felt they were unrelated to smoke, exertion, or similar?*

- Temperature >100.4F or felt feverish,
- Chills or shaking
- Cough, hoarse, or lost voice
- Shortness of breath or difficulty breathing
- Muscle pain, headache, or sore throat
- New loss of taste or smell
- Diarrhea, loose stool
- Nausea, vomiting
- Unexplained rash or blistering

In the past 14 days, have you had contact with a person known to be sick with COVID, Monkey Pox, influenza (flu), upper respiratory infection (camp crud, a cold), norovirus (stomach flu, food poisoning), strep throat, or other contagious illness?

TESTING: COVID-19 antigen tests are available onsite. Call (720) 693-4237

**Incident Health HOTLINE
(720) 693-4237**



SAW PARTS REQUEST

Revised 21JUL2021

CREW NAME			
RESOURCE #		REQUEST DATE	
CONTACT NAME		PICK UP DATE	
PHONE #			
SAW INFO			
MAKE	STIHL _____	HUSQVARNA _____	OTHER _____
MODEL			
BAR LENGTH			
AMOUNT	PART NAME & NUMBER		S #
# of DRIVERS			
PITCH	1/4" _____	3/8" _____	.325" _____ .404" _____ 3/4" _____
GUAGE	.043 _____	.050 _____	.058 _____ .063 _____
TOOTH LAYOUT	FULL _____	SEMI-SKIP _____	FULL SKIP _____
TOOTH CUT	CHISEL _____	MICRO-CHISEL _____	SEMI-CHISEL _____ CHAMFER-CHISEL _____
# of SPROCKET TEETH			
APPROVAL SIGNATURE			



Rocky Mountain IMT1

Line Supply Order

Revised 04/03/2019

Date & Time Order was Placed	Order # (BR+DIVS + #)	Location & Time for Delivery (Division/LZ/DP/Lat Long)	Mode of delivery (Driven/Helo/DIVS to Pick up)

Person placing order (name & time):

Order received in Communications by (name & time):

Order received in Transportation by (name & time):

Order received in Helibase by (name & time):

Order shipped to line unit by (name & time): (Send this sheet to the line with the order)

#	Item	Amount	Item	Amount
1.	Meals, Breakfasts ea	31.	Slingable Blivet, specify size – 72 or 55 gl ea	
2.	Meals, Lunches ea	32.	Folding Tank, specify size ea	
3.	Meals, Dinners ea	33.	Lightweight Pump Kit ea	
4.	Meals, MRE's cs	34.	Hose, 1 1/2" ea	
5.	Water, 5 gal. cubie ea	35.	Hose, 1" ea	
6.	Batteries- AA 1-Flat	36.	Hose, 3/4" ea	
7.	Batteries, Specify Type pk	37.	Reducer, 1 1/2" x 1" ea	
8.	Flagging, Specify type roll	38.	Reducer, 1" x 3/4" ea	
9.	Gas, raw gal	39.	Gated "Y", 1 1/2" ea	
10.	Bar Oil gal	40.	Gated "Y", 1" ea	
11.	2- cycle oil, chainsaw (2.5 oz) 6 pk	41.	Gated "Y", 3/4 " ea	
12.	Sleeping Bags ea	42.	Shut-off Valve, specify size ea	
13.	Gatorade cs	43.	In-line Tee, 1 1/2" x 1" ea	
14.	Tarps / Plastic roll	44.	Nozzle, 1 1/2" ea	
15.	Parachute Cord roll	45.	Nozzle, 1" ea	
16.	Tool, Shovel ea	46.	Nozzle, 3/4" ea	
17.	Tool, Pulaski ea	47.	20-25 Person First Aid Kit ea	
18.	Tool, Combi ea	48.	Chainsaw Kit ea	
19.	Tool, McLeod ea	49.	Toilet Paper (96 per case) cs	
20.	Tool, Specify Type ea	50.	1000 ft. Hose Lay Kit ea	
21.	Fusee cs	51.	Garbage Bags bx	
22.	Drip Torch ea	52.	Leadline ea	
23.	Drip Torch Mix, 5 gal. ea	53.	Spike Supply Kit ea	
24.	Coffee Kit w/propane ea	54.	Dolmar (6 per case) ea	
25.	Swivel ea	55.	Sprinkler Kit ea	
26.	Backpack Pump ea	56.	LINE Spike Supply Kit ea	
27.	Pumpkin, specify size ea	57.	Duct Tape roll	
28.	Mark 3 Pump ea	58.	House Wrap roll	
29.	Mark 3 Pump Accessory Kit ea	59.	Staple Gun w/staples ea	
30.	2-cycle oil, high pressure pump qt			

Team Ordering/Timeline Process:

1100 - Last call to change spike camp resource hot food location.
 1600 - *DIVS* to have next day's resource order ready for Planning OPS.

- All crew level orders will be placed through *DIVS* or Branch.
- *DIVS* or Branch will place all orders through Communications Unit.
- All orders will be tracked using the process found on the front of this form.

Definitions

FOB-Forward Operating Base is a secure forward position established to strategize, design and discuss tactics, and for personnel to transfer information and meet.

Line Spike Camp-Managed by Operations at the *DIVS* level; mobile, short duration and self- sufficient.

Spike Camp-Supported by Logistics, listed in the IAP, numbers in camp arc set by 1100, named by Plans.

Emergency Medevac- Life threatening situation requiring immediate medical attention. Handled as per IAP med plan and team SOP's.
 Communications to clear command channel radio traffic.

Medical Transport-Transport of less serious injury/illness managed by Operations or line Medics back to camp for evaluation and/or treatment.

1000 ft. Hose Lay Kit (Order as "#50")				Spike Supply Kit (Order as "#53")			
Quantity	NFES#	Item	Weight	Quantity	NFES#	Item	Weight
10 ea	1239	Hose 1½"	125 lbs	2 rolls	0071	Duct Tape	4 lbs
10 ea	1238	Hose 1"	84 lbs	4 rolls	0222	Fiber Tape	2lbs
20 ea	1016	Hose ¾"	25 lbs	1 case	0021	Trash Bags	21 lbs
5 ea	0231	1½" Gated "Y"	20 lbs	1 case	0465	Cups for hot liquid	18 lbs
5 ea	0259	1" Gated "Y"	13 lbs	2 ea	0070	16x24 Tent fly	40 lbs
10 ea	0904	¾" Gated "Y"	3 lbs	3 ea	0027	Water Wash Basins	2 lbs
5 ea	0010	Reducers 1½" - 1"	3 lbs	1 case		Liquid Hand Soap / pump	10 lbs
5 ea	0733	Reducers 1" - ¾"	2 lbs	18 cases	1842	MRE's	18 x 20= 360 lbs
10 ea	0738 or 0835	Ball Valve ¾"	5 lbs	48 ea	0022	Sleeping bags (dbl. bag)	48 x 5= 240 lbs
10 ea	0138	Nozzle, 1"	5 lbs	3 cases	0030	AA Batteries, 24 pkg./case	90 lbs
10 ea	0136	Nozzle ¾"	5 lbs	1case	0240	Paper Towels	41 lbs
5 ea	0230	Tee 1½x1½x1" /valve	5 lbs	1 case	0142	Toilet Paper	44 lbs
LINE Spike Supply Kit (Order as "#56")				1roll	0144	Plastic sheeting	45 lbs
				1 roll	0533	P-Cord	9 lbs
Quantity	NFES#	Item	Weight	20 ea	7443	Cubies, 5 gal. Full Potable Water	20 x 40= 800 lbs
20+OH	0022	Sleeping bags	20 x 5= 100 lbs	1 box	1059	12" Bastard Files	9lbs
20 ea	7443	Cubies, 5 gal Full	20x40= 800 lbs	1 ea	3444	2-cycle mix, chainsaw (6 pk 2.5 oz)	2lbs
18 cases	1842	MRE's	18x20=360 lbs	8 gal	1880	Bar Oil	64 lbs
1 sl	0533	P-Cord	9 lbs	15 gal		Regular Gas	120 lbs
3 cases	0030	AA Batteries, 24 pkg./case	90 lbs	1 can		3 lbs. can coffee	3 lbs
1 case	0021	Trash bags	21 lbs	1 ea		2 1/2 gal coffee pot or 3-1 gal	10 lbs
10 rolls	0142	Toilet paper	3 lbs	2ea	0089	Ridge pole	46 lbs
1 roll	0144	Plastic sheeting	45 lbs	12 ea	0083	Pole upright	89 lbs
2 rolls	0222	Fiber Tape	2 lbs	24 ea	0825	Stake Tent	24 lbs
1 ea	3444	2-cycle mix, chain-saw (6 pk 2.5 oz)	2 lbs				
4 gal	1880	Bar Oil	32 lbs				
15 gal		Regular Gas	120 lbs				
1 box	1059	12" Bastard Files	9 lbs				

MEDICAL PLAN (ICS 206 WF)

Incident/Project Name		1. Operational Period						
Bovee Fire		October 4, 2022 Day/Night						
2. Ambulance Services								
Name	Complete Address	Phone			Advanced Life Support (ALS)			
Blaine County Rescue Squad Ambulance	Brewster, NE	Blaine County Sherriff 308-547-2209						
3. Air Ambulance Services								
Name	Phone		Type of Aircraft & Capability					
Great Plains/Lifenet North Platte	Direct- 844-491-1247		EC-135- Night Vision					
4. Hospitals								
Name Complete Address	GPS Datum – WGS 84 Coordinate Standard Degrees Decimal Minutes DD° MM.MMM' N - Lat DD° MM.MMM' W - Long	Travel Time <u>TO/FROM</u> <u>TOWN OF</u> <u>CAMBRIDGE</u>		Phone		Helipad Yes No		Level of Care Facility
St. Elizabeth Regional Med Cntr 555 S 70th St Lincoln, NE 68510	Lat:	60 Min	3.5 Hrs	Burn Unit Direct 402-219-7680	X		Burn Center	
	Long:							
Great Plains Urgent Care 220 West Leota, Suite 2 North Platte, NE 69101	Lat:	N/A	60 Min	Office 402-534-2900		X	Urgent Care	
	Long:							
	Lat:							
	Long:							
	Lat:							
	Long:							
	Lat:							
	Long:							
5. Division Branch Group		Area Location Capability						
DIVISION A	EMS Responders & Capability:		No Incident Assigned Medical Resources- Determine Medical Capabilities Within Your Division					
	Equipment Available on Scene:							
	Medical Emergency Channel:		Call MEDL @ 970-261-1401 or 911					
	ETA for Ambulance to Scene:							
	Air:							
	Ground:							
	Approved Helispot:							
	Lat:							
Long:								

MEDICAL PLAN (ICS 206 WF)

DIVISION L	EMS Responders & Capability:	No Incident Assigned Medical Resources- Determine Medical Capabilities Within Your Division
	Equipment Available on Scene:	
	Medical Emergency Channel:	Call MEDL @ 970-261-1401 or 911
	ETA for Ambulance to Scene:	
	Air:	
	Ground:	
	Approved Helispot:	
	Lat:	
Long:		

DIVISION Z	EMS Responders & Capability:	No Incident Assigned Medical Resources- Determine Medical Capabilities Within Your Division
	Equipment Available on Scene:	
	Medical Emergency Channel:	Call MEDL @ 970-261-1401 or 911
	ETA for Ambulance to Scene:	
	Air:	
	Ground:	
	Approved Helispot:	
	Lat:	
Long:		

Prepared by:	Date and Time	Reviewed By Safety Officer
Greg Bergin MEDL	10/4/22 1900	Todd Legler SOF1

Overnight Medical Emergency

Identify Medical Resources Within Your Division/Group At Night Briefing

- All resources listed above are 24 hour
- Utilize embedded medical resources
- Call 911 with location and emergency
- Contact MEDL @ 970-261-1401 ASAP

MEDICAL PLAN (ICS 206 WF)

Controlled Unclassified Information//Basic

Medical Incident Report																													
<p>FOR A NON-EMERGENCY INCIDENT, WORK THROUGH CHAIN OF COMMAND TO REPORT AND TRANSPORT INJURED PERSONNEL AS NECESSARY.</p> <p>FOR A MEDICAL EMERGENCY: IDENTIFY ON SCENE INCIDENT COMMANDER BY NAME AND POSITION AND ANNOUNCE "MEDICAL EMERGENCY" TO INITIATE RESPONSE FROM IMT COMMUNICATIONS/DISPATCH.</p>																													
<p>Use the following items to communicate situation to communications/dispatch.</p>																													
<p>1. CONTACT COMMUNICATIONS / DISPATCH (Verify correct frequency prior to starting report) <i>Ex: "Communications, Div. Alpha. Stand-by for Emergency Traffic."</i></p>																													
<p>2. INCIDENT STATUS: Provide incident summary (including number of patients) and command structure. <i>Ex: "Communications, I have a Red priority patient, unconscious, struck by a falling tree. Requesting air ambulance to Forest Road 1 at (Lat./Long.) This will be the Trout Meadow Medical, IC is TFLD Jones. EMT Smith is providing medical care."</i></p>																													
Severity of Emergency / Transport Priority	<input type="checkbox"/> RED / PRIORITY 1 Life or limb threatening injury or illness. Evacuation need is IMMEDIATE <i>Ex: Unconscious, difficulty breathing, bleeding severely, 2^o – 3^o burns more than 4 palm sizes, heat stroke, disoriented.</i> <input type="checkbox"/> YELLOW / PRIORITY 2 Serious Injury or illness. Evacuation may be DELAYED if necessary. <i>Ex: Significant trauma, unable to walk, 2^o – 3^o burns not more than 1-3 palm sizes.</i> <input type="checkbox"/> GREEN / PRIORITY 3 Minor Injury or illness. Non-Emergency transport <i>Ex: Sprains, strains, minor heat-related illness.</i>																												
Nature of Injury or Illness & Mechanism of Injury			<i>Brief Summary of Injury or Illness (Ex: Unconscious, Struck by Falling Tree)</i>																										
Transport Request			<i>Air Ambulance / Short Haul/Hoist Ground Ambulance / Other</i>																										
Patient Location			<i>Descriptive Location & Lat. / Long. (WGS84)</i>																										
Incident Name			<i>Geographic Name + "Medical" (Ex: Trout Meadow Medical)</i>																										
On-Scene Incident Commander			<i>Name of on-scene IC of Incident within an Incident (Ex: TFLD Jones)</i>																										
Patient Care			<i>Name of Care Provider (Ex: EMT Smith)</i>																										
<p>3. INITIAL PATIENT ASSESSMENT: Complete this section for each patient as applicable (start with the most severe patient)</p>																													
<p>Patient Assessment: See IRPG page 106</p>																													
<p>Treatment:</p>																													
<p>4. TRANSPORT PLAN:</p>																													
<p>Evacuation Location (if different): (Descriptive Location (drop point, intersection, etc.) or Lat. / Long.) Patient's ETA to Evacuation Location:</p>																													
<p>Helispot / Extraction Site Size and Hazards:</p>																													
<p>5. ADDITIONAL RESOURCES / EQUIPMENT NEEDS:</p>																													
<p><i>Example: Paramedic/EMT, Crews, Immobilization Devices, AED, Oxygen, Trauma Bag, IV/Fluid(s), Splints, Rope rescue, Wheeled litter, HAZMAT, Extrication</i></p>																													
<p>6. COMMUNICATIONS: Identify State Air/Ground EMS Frequencies and Hospital Contacts as applicable</p> <table border="1" style="width: 100%; border-collapse: collapse;"> <thead> <tr> <th style="width: 15%;">Function</th> <th style="width: 20%;">Channel Name/Number</th> <th style="width: 15%;">Receive (RX)</th> <th style="width: 15%;">Tone/NAC *</th> <th style="width: 15%;">Transmit (TX)</th> <th style="width: 20%;">Tone/NAC *</th> </tr> </thead> <tbody> <tr> <td>COMMAND</td> <td></td> <td></td> <td></td> <td></td> <td></td> </tr> <tr> <td>AIR-TO-GRND</td> <td></td> <td></td> <td></td> <td></td> <td></td> </tr> <tr> <td>TACTICAL</td> <td></td> <td></td> <td></td> <td></td> <td></td> </tr> </tbody> </table>						Function	Channel Name/Number	Receive (RX)	Tone/NAC *	Transmit (TX)	Tone/NAC *	COMMAND						AIR-TO-GRND						TACTICAL					
Function	Channel Name/Number	Receive (RX)	Tone/NAC *	Transmit (TX)	Tone/NAC *																								
COMMAND																													
AIR-TO-GRND																													
TACTICAL																													
<p>7. CONTINGENCY: Considerations: If primary options fail, what actions can be implemented in conjunction with primary evacuation method? Be thinking ahead.</p>																													
<p>8. ADDITIONAL INFORMATION: Updates/Changes, etc.</p>																													
<p>REMEMBER: Confirm ETA's of resources ordered. Act according to your level of training. Be Alert. Keep Calm. Think Clearly. Act Decisively.</p>																													