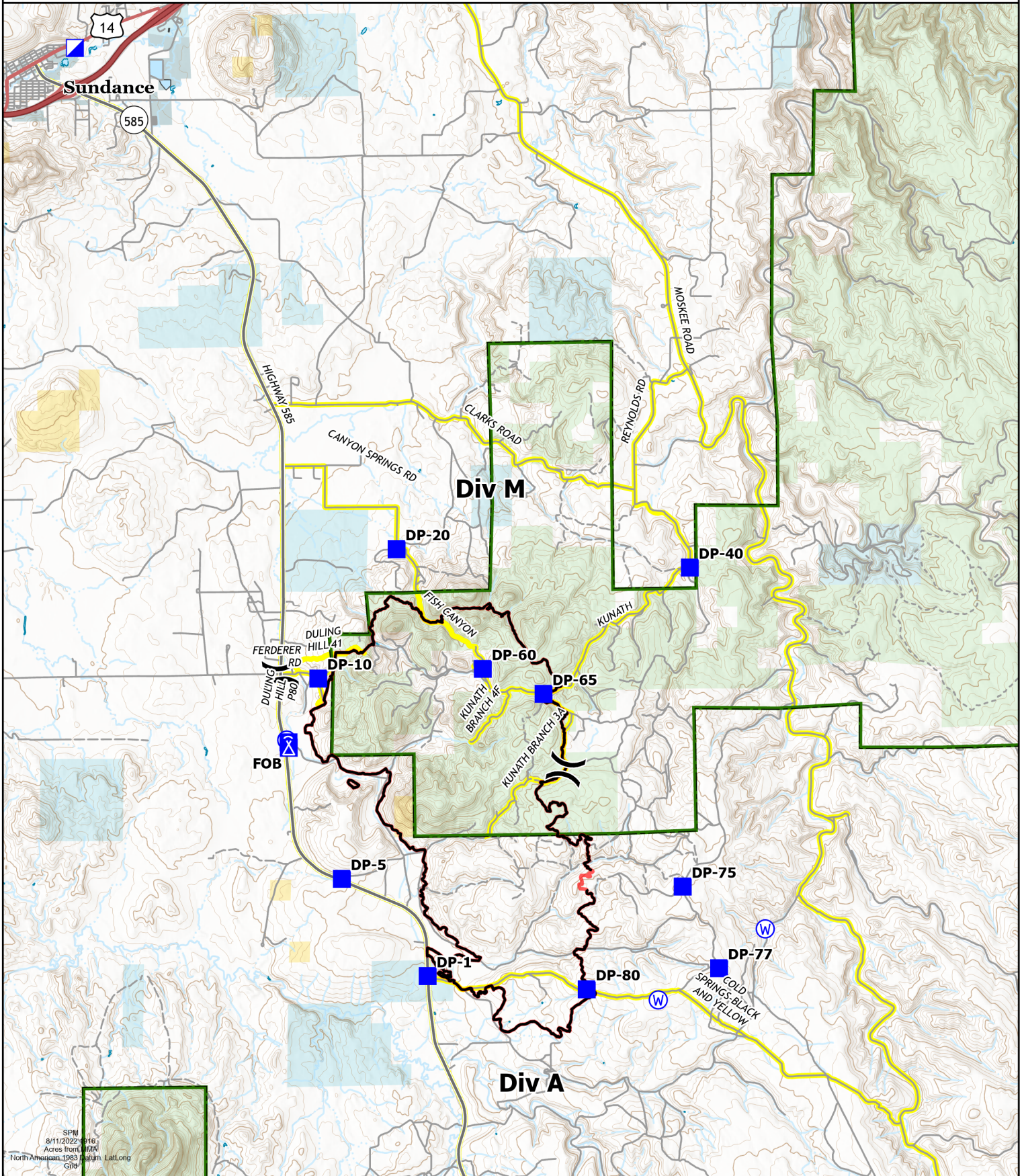
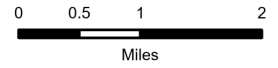


Transportation

Fish
 WYCRX-220541
 8/12/2022-8/14/2022
 6,793 acres at 8/9/2022 1250
 98% containment

- | | | | | | |
|-----|-----------------------|---|-------------------------------|---|---------------------------------|
| (X) | Division Break | — | Contained | ■ | Local Government |
| ■ | Incident Command Post | — | Main Routes | ■ | State |
| ■ | Drop Point | — | Wildfire Daily Fire Perimeter | ■ | US Forest Service (USFS) |
| ▲ | Camp | — | County or Equivalent | ■ | Private |
| ■ | Staging Area | — | Forest Service | ■ | Bureau of Land Management (BLM) |
| Ⓜ | Water Source | | | | |



SPM
 8/11/2022 10:16
 Acres from 0.00
 North American 1983 datum Lat,Long
 G10