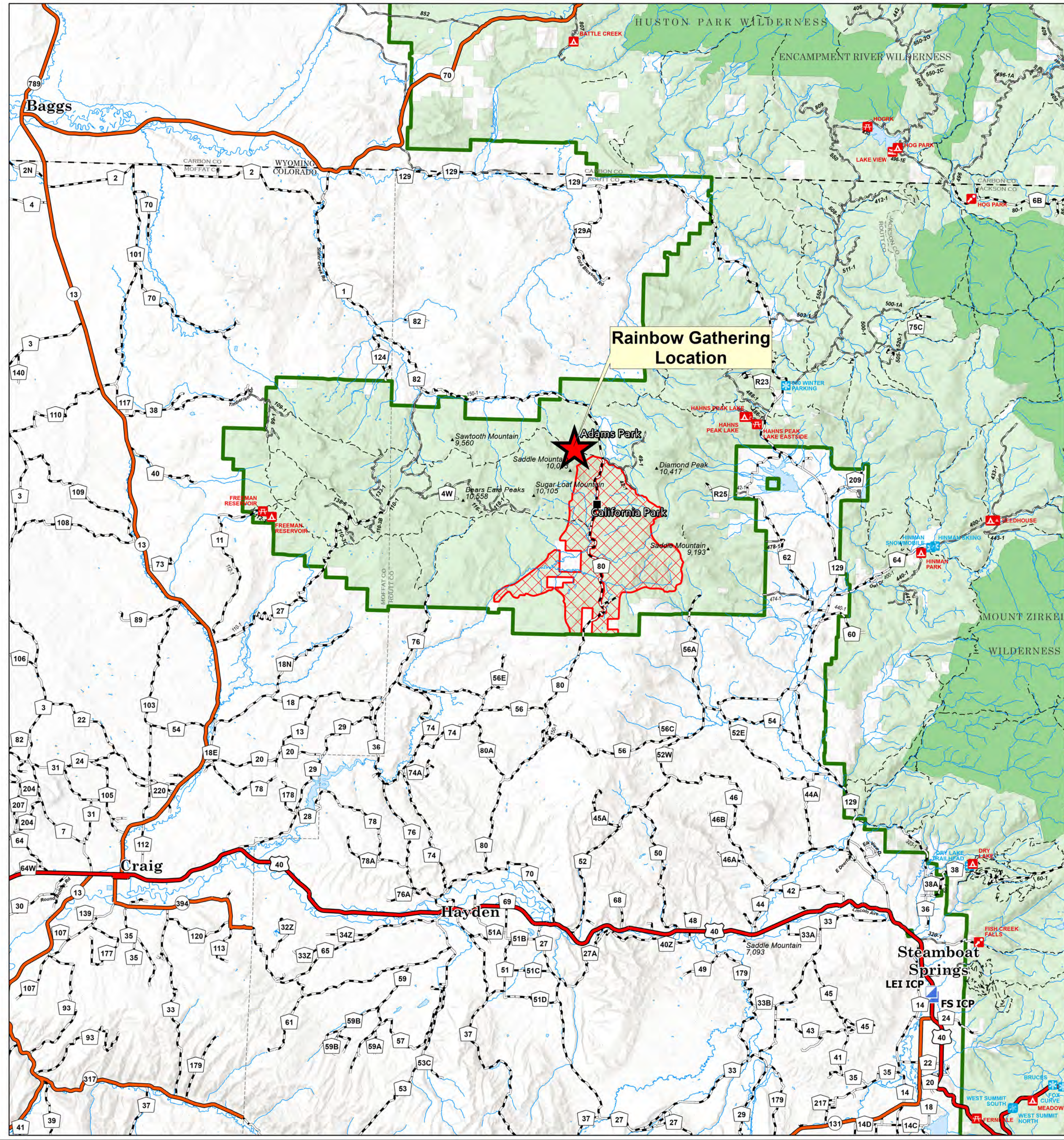
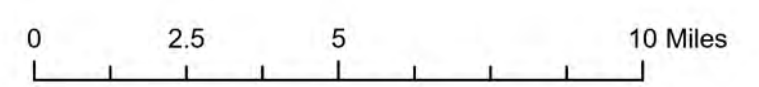


**Medicine Bow-Routt National Forest
Hahns Peak/Bears Ears Ranger District**

General Location Map



-  ICP
-  Rainbow Gathering Location
-  Ranger District Office
-  Other Forest Service Facility
-  Campground
-  Group Campground
-  Picnic Site
-  Boating Site
-  Interpretive Site
-  Snowpark
-  Primary Highway
-  Secondary Highway
-  Major Roads
-  Major FS Roads
-  Trail
-  Stream/River
-  Administrative FS Boundary
-  State Boundary
-  County Boundary
-  Forest Service Land
-  FS Wilderness Area
-  Closure Area



Medicine Bow-Routt National Forest

