



Sugarloaf Fire

WY-MRF-220267

P2PW7P (0206)

Friday, July 29th, 2022

Operational Period 0700-1900

Safety Starts Here

*The commitment to and accountability for safety is
a shared responsibility of all incident personnel.
All incident plans and activities must reflect this commitment.*

Do you accept this responsibility?

1. INCIDENT COMMUNICATIONS

- Ensure communications and frequencies are known to all personnel.
- Brief all personnel on objectives, changes in supervisory contacts.

2. WEATHER & FIRE BEHAVIOR

- Are you prepared for predicted fire behavior as forecasted?
- Have you planned for changes in weather - Wind? Hot and/or wet conditions?

3. TRANSPORTATION

- Drive defensively, wear seat belts, drive with lights on, clean windows and observe speed limits.
- Use spotters as needed.
- Drive to the road conditions and watch out for the public and wildlife.

4. DEHYDRATION

- Maintain adequate fluid intake to prevent dehydration and to keep healthy.

5. AVIATION

- Convenience is not a justification.
- IDENTIFY hazards ASSESS risks, CONTROL go-no-go decision, IMPLEMENT controls, MONITOR & evaluate, maintains air to ground contacts.
- Is the mission critical, can it be done by other methods?

6. MEDICAL PLAN

- Are you prepared to deal with a medical emergency? Review the Medical Plan.

Incident Commander: Bill Waln

Deputy Incident Commander: Pat Pearson

Incident Commander Trainee: Casey Cheesbrough

Available at this site:
Remote Incident Check-in, IAP's, Maps, Finance,
Fillable-CTR's, Training, Shift Tickets, Crew Swaps, Demob,
and General Messages



Welcome and Leaders Intent

First and foremost, Rocky Mountain Area Complex Incident Management Team Three (Team Three) welcomes you. You are away from family and friend; we will do what we can to support you. Thank-you for being here. We ask you consider yourself a member of our team. This membership does come with certain expectations and responsibilities.

Conduct and Behavior

Our expectation is that you, as a team member, will act in a professional manner representing Team Three and your home unit to the highest of standards. Careless, illegal, inappropriate and/or unsafe actions will not be tolerated. Alcohol and/or illegal drugs are not allowed within the incident environment or while actively assigned to the incident. Each team member has the responsibility to be ready, willing, and able to perform the duties for which they are qualified.

Human Rights/Harassment/Discrimination

Team Three fully supports mutual respect and everyone's right to a workplace that does not tolerate any form of harassment or discrimination. You are expected to act in a professional manner. It is your responsibility to stop inappropriate actions or comments immediately upon becoming aware of them. Any form of harassment must be reported to the Human Resource Specialist and/or Incident Commander immediately.

Safety

Your safety, and the safety of the public, is our primary commitment. All actions must reflect this commitment. The commitment to, and accountability for, safety is a joint responsibility of all team members, managers, and administrators. As a member of Team Three you are part of the overall team safety.

Engagement/Disengagement

Team Three will focus on safe, efficient, and cost-effective incident management. Leadership, your leadership is required. The 10 Standard Fire Orders and the 18 Watch-Out Situations will guide our tactical decisions, and implementation of LCES is expected before engaging in all fireline operations.

We look forward to working with you as a valuable member of our team. If you have any questions or feedback, please feel free to contact any Command and General Staff member.

ISI Bill Waln

Bill Waln-Incident Commander

ISI Pat Pearson

Pat Pearson-Incident Commander

INCIDENT OBJECTIVES (ICS 202)

1. Incident Name: Sugarloaf	2. Operational Period: Date From: 7/29/22 Date To: 7/29/22 Time From: 0700 Time To: 1900
---------------------------------------	--

3. Objective(s):

Manage the risk to firefighters and the public by utilizing a risk-based approach to decision-making through quality tradeoff conversations with the host agency, partners and stakeholders.

Utilize appropriate fire strategies to minimize fire impacts on residences, ranches, and critical community infrastructure to reduce the potential for adverse health, social, financial and economic hardships.

Consider operational strategies that minimize smoke impacts to smoke sensitive areas and receptors by adjusting tactics, monitoring and following guidance in State smoke management plans and coordination with State and local Air Quality agencies.

Maintain and improve relationships with local partners, stakeholders and other public groups.

Coordinate release of information with the host agency representative.

4. Operational Period Command Emphasis:

Ensure communications with line resources. Continue to establish/improve logistical support and communications. Establish safety protocols including processes for potential Incident Within Incident (IWI) for incoming response resources.

General Situational Awareness

LCES. Check and ensure radio communications by continuing to utilize the local REPEATERS for one more day.

5. Site Safety Plan Required? Yes No NOT APPLICABLE

Approved Site Safety Plan(s) Located at:

6. Incident Action Plan (the items checked below are included in this Incident Action Plan):

<input checked="" type="checkbox"/> ICS 203	<input type="checkbox"/> ICS 207	<u>Other Attachments:</u>
<input checked="" type="checkbox"/> ICS 204	<input checked="" type="checkbox"/> ICS 208	<input checked="" type="checkbox"/> FIRE BEHAVIOR FORECAST
<input checked="" type="checkbox"/> ICS 205	<input checked="" type="checkbox"/> Map/Chart	<input checked="" type="checkbox"/> TRAINING MESSAGE
<input type="checkbox"/> ICS 205A	<input checked="" type="checkbox"/> Weather Forecast/Tides/Currents	<input checked="" type="checkbox"/> INFECTIOUS CONTROL PROCEDURES
<input checked="" type="checkbox"/> ICS 206		<input checked="" type="checkbox"/> FINANCE PROCEDURES

7. Prepared by: Name: PETER BARTH Position/Title: PSCC Signature: *Peter Barth*

8. Approved by Incident Commander: Name: BILL WALN Signature: *Bill Waln*

ICS 202	IAP Page _____	Date/Time: 7/28/2022
---------	----------------	----------------------

Sugarloaf Fire

Operations Section

Planning Chief Jay Mickey, Brandon Bonenberger (T)

Field Chief Matt Norden, Nick Collard (T)

Operational Period

July 29, 2022 0700-1900

Division/Group

Division A DIVS Seth McKinney, Blake Cobb (T)

Division Z DIVS Jon Stonelake, Tyler Nathe (T)

Structure GRP Mike Willardson

Contingency GRP Chris Rokosh, Cody Miller (T)

Incident Commander and Staff

Incident Commander Bill Waln, Casey Cheesbrough (T)

Deputy IC Pat Pearson

Safety Pat Medina, Brian Ayers
Tedd Teahon (T), Ali Robb (T)

Liaison Sam Carle, Josh Shroyer (T)

Medical Jeff Basamanowicz
Joel Simonson (T)

Firefighter Heath Cord. Payton Winsor - MEDL (T)

Information Jon Ashford, Dawn Sanchez (V)
Anne Reid (T)

Agency Representatives

USFS AA Russ Bacon, Frank Romero
Rob Robertson (T)

Covid AA Chris Olds

Wyoming State AA Jarod Delay

Albany County AA Chad Dinges (Fire Warden)

Wyoming State AR Travis Perdue

BLM-WY-Rawlins John Elliott

Albany County Sheriff Aaron Appelhans

Albany Co Commissioner Sue Iberra
Heber Richardson

Converse Co Comm Jim Willox

Wyoming Game & Fish

Air Operations Branch

Air Branch Director Carolyn Blatz

Air Support Group Supervisor Ken Ostrom

Air Tactical Group Supervisor

Helibase Manager Brandon Williams

Logistics Section

Chief Randy Spiering, Colleen Gadd
Ken Hehr (T)

Ground Support Darin Gehring

Comms Leader Walter Warrick

Communications Tech Walt Burns, Jim Rooney

IT Specialist Kevin Watts

Facilities Joe Ulozas

Supply Kathy Porter

Food Wally Leander, Jamie Rietz (T)

Security Darrell Hanson

Base Camp Patrick McCoy, Kurt Stagner (T)

Ordering Travis Chadwick

Planning Section

Chief Peter Barth, Mike Rubenstein

Resources Kellie Stover

Situation Chad Lewis, Brenda Wasielewski (T)

Fire Behavior David Greathouse

Meteorologist Jeff Colton

Demobilization Shawna Martinez
Amy Daniels (T)

Status Check-In Emily Burke, Jami Jungck (T)

Training Specialist Wendy Fischer

Documentation Spencer Pollock (V)

GIS Specialist David Sinton, Sarlyn McCormick (V)

Finance Section

Chief Mavis Biastoch, Patty Wyatt,
Kayla Davin (T)

Cost Natasha Goedert

Procurement Sarah Boyd

Time Arlene Tucker

Compensation Annette Pintado

Prepared By: Kellie Stover - RESL





INCIDENT Weather Forecast



Forecast No: 2
 Prediction For: Friday
 Shift Date: July 29, 2022
 Forecast Issued: July 28, 2022 at 2000

Name of Incident: Sugarloaf Fire
 Unit: Medicine Bow NF
 Incident Meteorologist: Jeff Colton
 (208) 577-1617

Discussion: Moisture will be gradually eroding over the next several days as high pressure builds over the Pacific Northwest. This will bring warmer daytime temperatures and lower afternoon humidity to the fire. The potential for rainfall will also be diminishing, although isolated showers and thunderstorms will still be around, favoring the higher peaks just northeast of the fire. Outflow winds will be a concern from any storms in the area.

Forecast for Today: *Erratic winds possible near thunderstorms this afternoon*

Sky/Weather: Partly cloudy (40-50%) with scattered showers and thunderstorms, mainly after 1300.

	<u>Dodge Creek 7,400'</u>		<u>Cow Creek 7,800'</u>		<u>Sugarloaf 8,200'</u>		
Max Temperature:	74		74		74		°F
Min RH:	34		37		39		%
Wind (20 FT):	Moderate inversion breaking around 1000.						
...	E	12	ENE	10	NE	9	mph
...	Gusts:	20	Gusts:	18	Gusts:	15	mph
Haines Index:	3		3		3		
LAL:	3		3		3		
Chance of Precipitation:	20		20		20		%
Tonight's Min Temperature:	52		54		55		°F
Tonight's Max RH:	90		80		80		%
Tonight's Wind (20 FT):	Inversion settling in after 2100.						
...	SW	9	SW	7	SW	7	mph
...	Gusts:	15	Gusts:	15	Gusts:	13	mph
Tonight's Haines Index:	3		3		3		
Tonight's LAL:	1		1		1		
Tonight's Chnc of Precip:	15		15		10		%

Forecast for Saturday:

Sky/Weather: Partly cloudy (30-40%) with isolated showers and thunderstorms.

	<u>Dodge Creek 7,400'</u>		<u>Cow Creek 7,800'</u>		<u>Sugarloaf 8,200'</u>		
Max / Min Temperature:	81	55	81	57	81	59	°F
Min / Max RH:	23	70	25	60	26	55	%
Wind (20 FT):	Inversion breaking by 1030.						
...	N	9	SSE	9	ESE	9	mph
...	Gusts:	15	Gusts:	15	Gusts:	15	mph
Haines Index:	4		LAL:	3	Precip Chance:	20	

Extended Outlook: Dry and warmer weather expected into early next week. Isolated thunderstorms will remain possible, but will be focused on the higher terrain northeast of the fire.

		<u>Max T</u>	<u>Min T</u>	<u>Min RH</u>	<u>Max RH</u>	<u>Ridge Winds @ 1500</u>	<u>Weather</u>
Cow Creek 7,800'	Sun:	83	59	22	50	NNE @ 9 G15	Isolated Thunderstorms
	Mon:	86	62	16	45	W @ 13 G23	Mostly Sunny
	Tue:	83	59	23	60	W @ 19 G33	Partly Cloudy

ADVECTION - The horizontal transport of air or atmospheric properties. Commonly used with temperatures, i.e., "warm air advection", or moisture, i.e., "moisture advection".

FIRE BEHAVIOR FORECAST

FORECAST NUMBER: 1	TYPE OF FIRE: Wildfire
FIRE NAME: Sugarloaf	OPERATIONAL PERIOD: 7/29/2022 Day
DATE ISSUED: 7/28/2022	TIME ISSUED: 2000
UNIT: Medicine Bow National Forest	SIGNED: David Greathouse Typed/printed: David Greathouse - FBAN

WEATHER:

****Thunderstorms with brief heavy rainfall, gusty winds and lightning are possible today****
See fire behavior forecast for details

Weather Threshold's That Shout WATCH OUT

(Per Laramie FDRA Pocket card)

Temperatures greater than 75°, relative humidity less than 15%, 20' winds greater than 15mph

FUELS:

The fuels in the fire area mainly a mixed conifer stand with grasses and dead and down on the surface. In open areas, grass and brush are present. Dead standing timber from drought and beetle kill can be found scattered throughout.

The fuels are dry for this time of year. The current ERC-Y is hovering around the 75th percentile, which is down from historic indices at the time of ignition but still above average for this time of years. The 100- and 1000-hour fuel moistures are at 11% and the live fuel moistures in the Sagebrush is at 122%. Current moistures are low enough to allow these fuels to contribute to fire intensity

Today's calculated fine dead fuel moisture is predicted to be 5% - 8%

FIRE BEHAVIOR:

General:

Recent rainfall along with predicted weather will keep fire behavior to a minimum today. Expect the fire to continue to creep along the surface on all active fire edges. Expect the fire to slowly back towards Indian Peak on the SE side of the fire in DIVA as well as into Cow Creek in DIVZ. This morning's IR flight is still showing some scattered heat along the handline in the north. Pay attention to this. This could be problematic in the coming days as the forecasted weather becomes warmer and drier

Maximum Surface Fire Potential
(Head fire, upslope @ 45%, winds upslope)

Rate of Spread	Flame Length	Probability of Ignition
3-6 ch/hr	1-3'	50%-60%

AIR OPERATIONS:

Gusty outflow winds, hail and lightning could hamper air operations in the afternoon

SAFETY:

Always maintain situation awareness: Remember small fires and quiet sectors of large fires are a common denominator for tragedies and near misses!

DIVISION/GROUP ASSIGNMENTS

Sugarloaf Fire

Branch

Division

Alpha

Operational Period

7/29/22	0700	7/29/22	1900
---------	------	---------	------

Operations Personnel:

Operations Chief (Plans)	Jay Mickey Brandon Bonenberger (T)	Division/Group Supervisor	Seth McKinney Blake Cobb (T)
Operations Chief (Field)	Matt Norden Nick Collard (T)	Air Attack Supervisor	
Safety Officer	Field: Kurt Schierrenbeck Brian Ayers Tedd Teahon (T)	Medical Unit Leader	Joel Simonson (T)

RO #	Item Code	Resource	LWD	Leader Name	# Person	Drop Off Pt/Time	Pick Up Pt/Time
C-7	HC1	Roosevelt	8/1	Larry Money	21	Spike/0700	Spike/1900
C-8	HC1	Arrowhead	8/5	Joe Suarez	20	Spike/0700	Spike/1900
C-2	HC2IA	Craig	7/31	Logan Blakenship	20	Spike/0700	Spike/1900
C-6	HC2IA	Miller Timber 1A			20	Spike/0700	Spike/1900
		Twin Falls Helitack			8	Spike/0700	Spike/1900
E-4	DO22	Rittberger	8/9	Klinton Rittberger	2	Spike/0700	Spike/1900
	HEQB			Dave Morrill	1	Spike/0700	Spike/1900
O-26	EMTF		8/10	Luanne Baumann	1	Spike/0700	Spike/1900

Work Assignments:


TASK: Scout, construct, and prep direct and indirect fireline.
 PURPOSE: Prepare for burnout operations.
 END STATE: Fireline in the correct location with the right dimensions to contain the fire.

Special Instructions:

Grand Avenue Ambulance staged at ICP

Communication Summary

See Communication Plan

Prepared By: Kellie Stover	Position: RESL	Signature:
Date/Time: 7/28/2022 2036		
		# Personnel 93

DIVISION/GROUP ASSIGNMENTS

Sugarloaf Fire

Branch

Division

Zulu

Operational Period

7/29/22	0700	7/29/22	1900
---------	------	---------	------

Operations Personnel:

Operations Chief (Plans)	Jay Mickey Brandon Bonenberger (T)	Division/Group Supervisor	Jon Stonelake Tyler Nathe (T)
Operations Chief (Field)	Matt Norden Nick Collard (T)	Air Attack Supervisor	
Safety Officer	Field: Kurt Schierrenbeck Brian Ayers Tedd Teahon (T)	Medical Unit Leader	Joel Simonson (T)

RO #	Item Code	Resource	LWD	Leader Name	# Person	Drop Off Pt/Time	Pick Up Pt/Time
C-3	HC1	Alpine	8/9	James Champ	23	Zulu Spike/0700	Zulu Spike/1900
C-5	HC1	San Juan	8/10	John Allbright	23	Zulu Spike/0700	Zulu Spike/1900
C-1	HC2IA	Miller Timber 4	8/2	Mychal Hortert	20	Zulu Spike/0700	Zulu Spike/1900
C-4	HC2IA	OWF Naches	8/8	Austin Betts	19	Zulu Spike/0700	Zulu Spike/1900
O-27	EMTF		8/10	Andrew Gilsdorf	1	Zulu Spike/0700	Zulu Spike/1900
O-28	EMTF		8/10	Mary Pimm	1	Zulu Spike/0700	Zulu Spike/1900

Work Assignments:

TASK: Scout and construct direct and indirect fireline.
 PURPOSE: Keep fire from impacting values at risk.
 END STATE: Fireline in the correct location with the right dimensions to contain the fire.

Special Instructions:

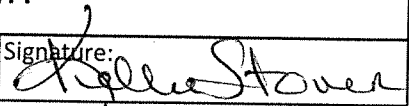
Grand Avenue Ambulance staged at ICP

Communication Summary

See Communication Plan

Prepared By: Kellie Stover	Position: RESL	Signature: 
Date/Time: 7/28/22 2030		

Personnel 89

DIVISION/GROUP ASSIGNMENTS							
Sugarloaf Fire				Branch		Division	
						Structure	
Operational Period							
7/29/22		0700		7/29/22		1900	
Operations Personnel:							
Operations Chief (Plans)		Jay Mickey Brandon Bonenberger (T)		Division/Group Supervisor		Mike Willardson	
Operations Chief (Field)		Matt Norden Nick Collard (T)		Air Attack Supervisor			
Safety Officer		Field: Kurt Schierrenbeck Brian Ayers Tedd Teahon (T)		Medical Unit Leader		Joel Simonson (T)	
RO #	Item Code	Resource	LWD	Leader Name	# Person	Drop Off Pt/Time	Pick Up Pt/Time
O-31	TFLD		8/10	Richard Palestro	1	ICP / 0700	ICP / 1900
O-56	TFLD (T)		8/10	Calvin Hoffman	1	ICP / 0700	ICP / 1900
E-1	ENG4	Gunnison 24	8/10	Ben Brack	5	ICP / 0700	ICP / 1900
E-16	ENG4	Goshen Hole	8/10	Rick Teeters	3	ICP / 0700	ICP / 1900
E-2	ENG6	Worland E62	8/9	Ben Gomez	3	ICP / 0700	ICP / 1900
E-5	ENG6	Grand Fire 340	8/10	Brian Faith	4	ICP / 0700	ICP / 1900
E-6	ENG6	BLM 1605	8/9	Jennifer Fensel	8	ICP / 0700	ICP / 1900
E-8	ENG6	BLM 2602	8/9	Scott Manahan	3	ICP / 0700	ICP / 1900
E-17	ENG6	Torrington Wildland 1	8/9	Luis Correa (T)	3	ICP / 0700	ICP / 1900
E-18	ENG6	Natrona Br 7-4	8/10	Bryan Morton	3	ICP / 0700	ICP / 1900
E-19	ENG6	South Dakota 621	8/11	Trenton Wiese	3	ICP / 0700	ICP / 1900
E-20	ENG6	Colorado River	8/11	John Bennett	3	ICP / 0700	ICP / 1900
E-62	ENG6	Med Bow E651	8/10	Mark Herrington	4	ICP / 0700	ICP / 1900
E-63	ENG6	Med Bow E618	8/10	Brent Lytle	4	ICP / 0700	ICP / 1900
E-71	ENG6	Big Laramie 1		Shawn Sommerfeld	3	ICP / 0700	ICP / 1900
E-72	ENG6	Albany Central Brush 14				ICP / 0700	ICP / 1900
E-73	ENG6	Centennial 2				ICP / 0700	ICP / 1900
E-22	WTT1	Cambell County	8/9	Jacob Millard	2	ICP / 0700	ICP / 1900
E-76	WTS2	Centennial 8			2	ICP / 0700	ICP / 1900
Work Assignments:							
TASK: Prep structures.							
PURPOSE: Reduce impact to structures.							
END STATE: Defensible space is developed around structures.							
Special Instructions:							
Grand Avenue Ambulance staged at ICP							
Communication Summary							
See Communication Plan							
Prepared By: Kellie Stover		Position: RESL			Signature: 		
Date/Time: 7/28/2022 2045							
						# Personnel	45

DIVISION/GROUP ASSIGNMENTS

Sugarloaf Fire

Branch

Division

Contingency

Operational Period

7/29/22	0700	7/29/22	1900
---------	------	---------	------

Operations Personnel:

Operations Chief (Plans)	Jay Mickey Brandon Bonenberger (T)	Division/Group Supervisor	Chris Rokosh Cody Miller (T)
Operations Chief (Field)	Matt Norden Nick Collard (T)	Air Attack Supervisor	
Safety Officer	Field: Kurt Schierrenbeck Brian Ayers Tedd Teahon (T)	Medical Unit Leader	Joel Simonson (T)

RO #	Item Code	Resource	LWD	Leader Name	# Person	Drop Off Pt/Time	Pick Up Pt/Time

Work Assignments:

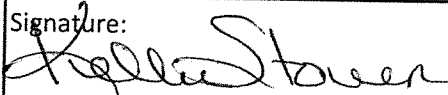
TASK: Scout indirect check lines.
 PURPOSE: Provide additional opportunities to slow fire spread toward containment lines.
 END STATE: Check line in the correct location with the right dimensions to contain/slow fire spread.

Special Instructions:

Grand Avenue Ambulance staged at ICP.
 Collect fire area intelligence onto field maps.

Communication Summary

See Communication Plan

Prepared By: Kellie Stover	Position: RESL	Signature: 
Date/Time: 7/28/2022 2100		
		# Personnel

AIR OPERATIONS SUMMARY

Prepared By: Carolyn Blatz

Prepared Date: 07/28/2022

Prepared Time: 1730

1. INCIDENT NAME: Sugarloaf	2. OPS PERIOD DATE: July 29, 2022	START TIME: 0700	END TIME: 2100	SUNRISE: 0554	SUNSET: 2023 PUMPKIN: 2053
3. REMARKS (Safety Notes, Hazards, and Air Operations Special Equipment, etc.): Helibase Lat/Long 42 10.907 x 105 44.020 Order Type 1 Helicopters through Casper Dispatch. Send costs to: 2022.sugarloaf.finance@firenet.gov and carolyn_blatz@firenet.gov AVOID OVERFLIGHT OF STRUCTURES WITH EXTERNAL LOADS. FOLLOW WIND LIMITATION PROTOCOLS WHEN CONDUCTING AIR OPERATIONS.			4. Initial Attack: Medivac: 7TA		
5. TFR #: 2/8660					

6. PERSONNEL	NAME	PHONE #	7. FREQUENCIES	AM	FM	8. FIXED-WING- Type/Make-Model/N#/Base LATS and SEATS A/A order through Casper Dispatch
AOBD	Carolyn Blatz	573-778-2810	A/A TFR	126.8000		
ASGS	Ken Ostrum	307-272-3266	A/A Rotor			
HEBM	Brandon Williams	208-320-6493				
HMBG 3AJ	Steve Mohr	541-228-4353	A/G Primary		168.4000	
HMGB 9RH	Rowdy Woods	970-759-5574				
HMGB 8EC	Taylor Clelland	208-316-2263	A/G Secondary			
HMGB 7TA	Frank Haines	605-517-0832				
HMGB 214B	Garret Steinert	307-851-5093				
Aviation Officer	Scott Headrick	720-209-2303				
CPC Dispatch	Main Line	1800-295-9952				

9. Durango Dispatch Zone Aircraft

FAA N#	TY	MAKE/ MODEL	BASE	AVAIL	START	REMARKS	FAA N#	TY	MAKE/ MODEL	BASE	AVAIL	START	REMARKS
3AJ	1	CH-47	KLAR	0900	0800	Bucket	7TA	3	AS-350	Helibase	0800	0700	Recon, IA, W
9RH	1	KMAX	KDGW	0900	0800	Bucket	20HX	3	AS-350	Helibase	0800	0700	Recon, IA, W
214B	1	214B	KLAR	0900	0800	Bucket							
GRIT 24	1	UH60	KCYS	0800	0900	NG Hoist	UR 31		UAS				
8EC	2	B-205A1++	Helibase	0800	0900	CW Shuttle							

10. TASK/ MISSION/ ASSIGNMENT (Type/function includes: Air Tactical, Retardant, Recon, Personnel Transport, Bucket Operations, SAR, etc.)				
TYPE/FUNCTION	NAME OF PERSONNEL OR CARGO (if applicable) or instructions for tactical aircraft	MISSION START	FLY FROM	FLY TO
Recon / Logistics / Pax Transport	As Requested by Operations / Air Attack	As Requested	Base	Fire
Bucket Support / Retardant	As Requested by Operations / Air Attack	As Requested	Base	Fire

Controlled Unclassified Information // Basic

INCIDENT RADIO COMMUNICATIONS PLAN I-205		1. INCIDENT NAME	2. DATE/TIME PREPARED	3. OPERATIONAL PERIOD DATE/TIME
		Sugarloaf Fire	18:45	0700 - 1900

4. BASIC RADIO CHANNEL UTILIZATION

Ch #	Channel Name	Assignment	RX Frequency	RX Tone / NAC	TX Frequency	TX Tone / NAC	Mode Digital (D) Analog (A) Mixed (M)	Remarks
1	CMD 1	FUTURE	169.7500	146.2	167.1000	146.2	A	Planned Future Use
2	CMD 2	FUTURE	173.0375	146.2	167.3250	146.2	A	Planned Future Use
3	CMD 3	FUTURE		146.2		146.2	A	Planned Future Use
4	TAC 1	DIV A	168.2000	146.2	168.2000	146.2	A	
5	TAC 2	DIV Z	168.6000	146.2	168.6000	146.2	A	
6	TAC 3	STRUCTURE GROUP	166.7250	146.2	166.7250	146.2	A	
7	TAC 4	DIV	168.0500	146.2	168.0500	146.2	A	
8	TAC 5	DIV	166.7750	146.2	166.7750	146.2	A	
9	TAC 6	DIV	168.2500	146.2	168.2500	146.2	A	
10	VFIRE21	TAC	154.2800	---	154.2800	156.7	A	
11	COMMAND	COMMAND	173.7625	110.9	164.8000	167.9	A	Primary (Cow Creek Mtn)
12	COMMAND	COMMAND	168.2750	---	171.7250	131.8	A	Secondary (Laramie Peak)
13	A/G PRIMARY	A/G PRI	168.4000	---	168.4000	---	A	
14	A/G SECONDARY	A/G SEC	166.6125	---	166.6125	---	A	
15	VMED28	EMS	155.3400	---	155.3400	156.7	A	
16	AIRGUARD	AIRGUARD	168.6250	---	168.6250	110.9	A	EMERGENCY USE ONLY

5. I-205 Prepared By	/s/ Walter Warrick, COML	Poor Coverage? (Post Lookout and Human Repeaters as Needed) Current Clone: 072922B
----------------------	--------------------------	---

Controlled Unclassified Information // Basic

SUGARLOAF FINANCE PROCEDURES

Finance is 100% electronic.

Finance email: 2022.sugarloaf.finance@firenet.gov

After completing the Finance check-in form, from the QR code link on the front of the IAP, please email electronic copies of the following documents as applicable:

- Contract/Agreement/State Cooperative Agreement
 - Casual Hire Form
 - Resource Order
 - Crew Manifest
-
- Please submit completed CTRs and/or Shift Tickets signed by immediate supervisor **every 4-5 days**.
 - Electronic CTRs and Shift Tickets are available through the QR code on the IAP cover.
 - **A legible photo** is also acceptable.
- ** All time, must include required justifications for hazard pay, compensable meal breaks or excess hours. Don't forget name, resource order # and date. Also, please include a valid phone # and email address.
- ✓ **Medical**. Please work directly with the **Medical Unit Leader**. The MEDL will work with Finance to assure forms are available and completed.
 - ✓ **Damages or Claims**. Do not wait until day of demob. An electronic OF-289, *Property Loss or Damage Report*, is available through the QR Code on the IAP cover. Contact Comp/Claims (or FSC) with questions. Include witness statements, signatures and your contact info.

*Please include the word "**TIME**" in the subject line of your email when sending CTRs/Shift Tickets.

Email all Finance documentation to: 2022.sugarloaf.finance@firenet.gov

If you are sending other pertinent information or questions, please send a separate email with appropriate subject line, ie: "Question on time" or "Explanation of travel."

If time reporting questions, please contact Finance at (425) 324-1367.
Comp/Claims can be reached at (425) 324-1368.

7/28/2022

Training Specialist (TNSP) Message/Training Process

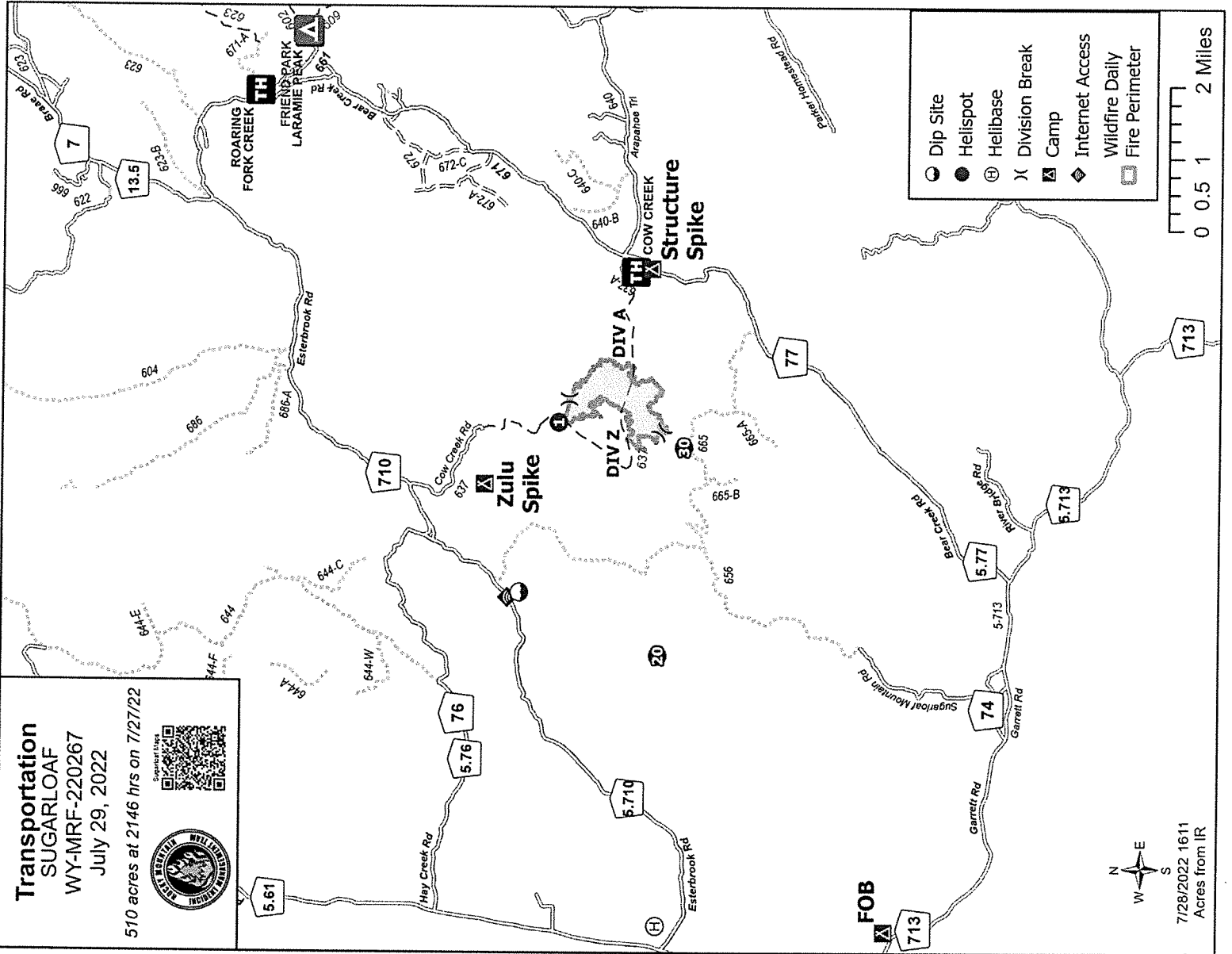
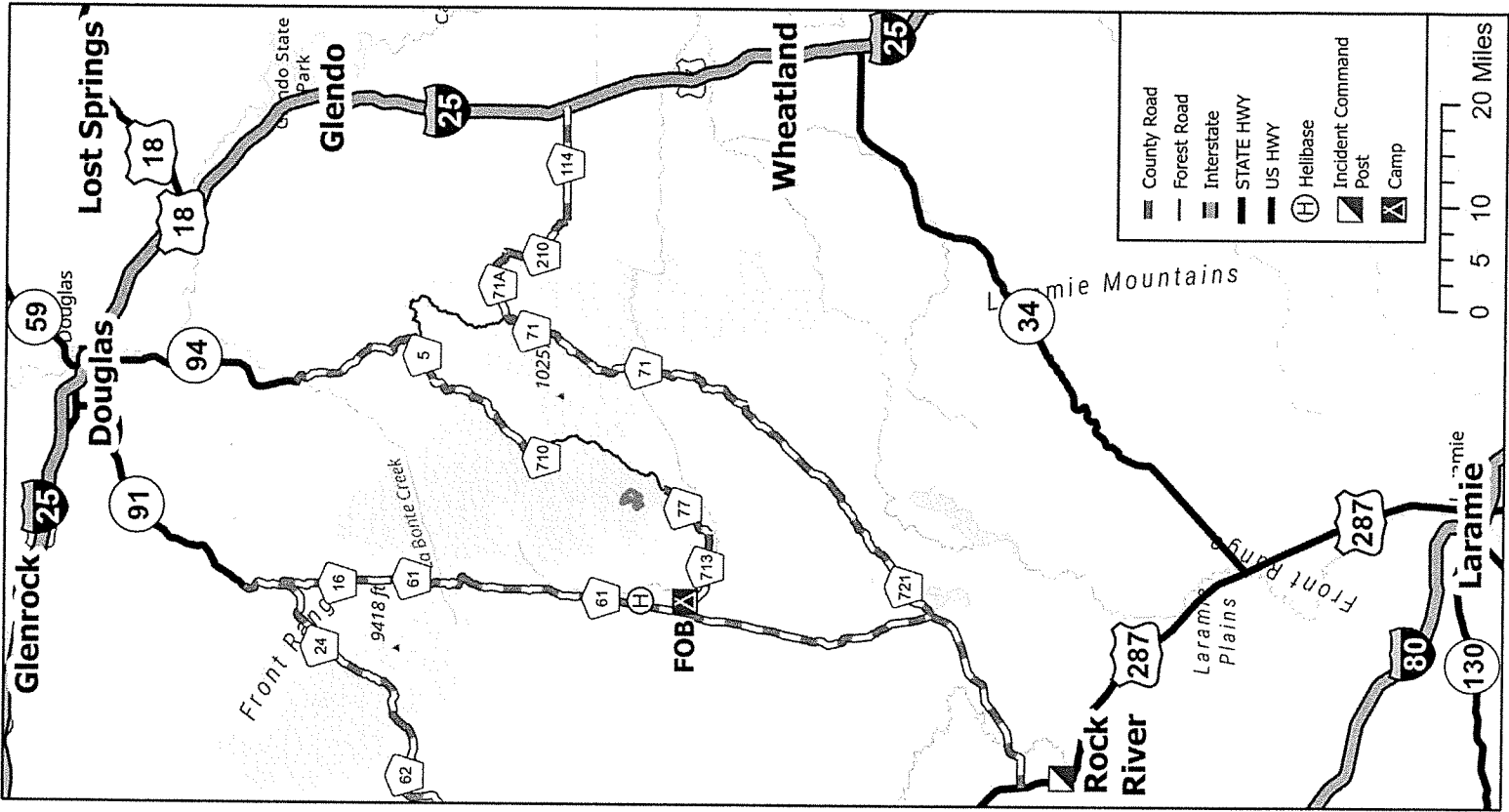
Trainees – have you checked in with TNSP?

Just a reminder that if you are a trainee, single resource and above, the TNSP is tracking your assignment to provide documentation back to the home unit along with final training incident reports to the IMT and GACC's.

The TNSP is available to answer questions and/or help guide both the Trainee and Evaluator through the process. For more information on PTB's:

<https://www.nwccg.gov/publications/position-taskbooks>

<i>Trainee Process</i>	<i>Notes</i>	<i>What to do</i>
Check In	Complete the Trainee Check In Form	QR code on front of the IAP Complete "Trainee Check In Form"
Training Assignment	Taking ownership. Identify tasks and learning opportunities.	Visit with your evaluator
PTB Evaluation Record	Make sure to receive a completed, legible evaluation record and Incident Personnel Performance Rating (ICS 225). Incomplete or incorrect information can delay certification.	Review evaluation records and send copies of the following items to the TNSP via email or text message. <ul style="list-style-type: none"> • Evaluation Record • Incident Personnel Performance Rating (ICS 225) • Taskbook
Close Out	Schedule and "Exit Interview" with TNSP	QR code on front of the IAP Complete "Trainee Demob Form" Or call TNSP to discuss
Incident Training Specialist	Wendy Fischer	Wendy_fischer@firenet.gov (970)759-9610



Transportation
 SUGARLOAF
 WY-MRF-220267
 July 29, 2022

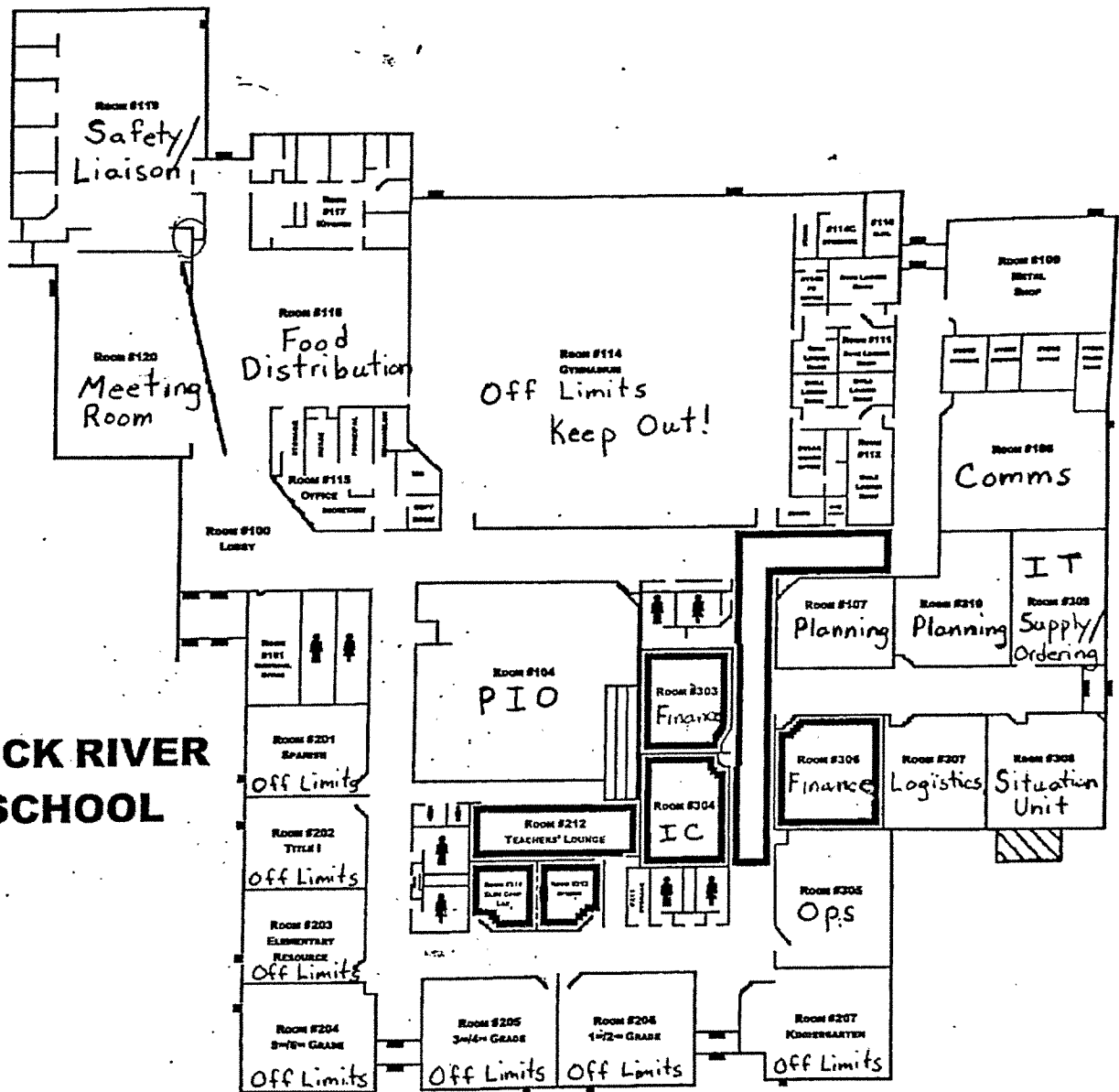
510 acres at 2146 hrs on 7/27/22




MAP OF ROCK RIVER SCHOOL

North ↑

**ROCK RIVER
SCHOOL**



- EXITS
- SAFETY ZONES
- FIRE ROUTE
- TORNADO ROUTE
- LOCKDOWN SAFE AREA



Rocky Mountain IMT Black



Line Supply Order

Date & Time Order was Placed	Order # (BR+DIVS + #)	Location & Time for Delivery (Division/LZ/DP/Lat Long)	Mode of delivery (Driven/Helo/DIVS to Pick up)

Order received in Communications by (name & time):

Order received in Supply by (name & time):

Order received in Transportation by (name & time):

Order received in Helibase by (name & time):

Order shipped to line unit by (name & time): (Send this sheet to the line with the order)

#	Item	Amount	Item	Amount
1.	Meals, Breakfasts	ea	30. Slingable Blivet	ea
2.	Meals, Lunches	ea	31. Folding Tank, specify size	ea
3.	Meals, Dinners	ea	32. Lightweight Pump Kit (Cache)	ea
4.	Meals, MRE's	cs	33. Hose, 1 1/2"	ea
5.	Water, 5 gal. cubie	ea	34. Hose, 1"	ea
6.	Batteries- AA	1-Flat	35. Hose, 3/4"	ea
7.	Batteries, Specify Type	pk	36. Reducer, 1 1/2" x 1"	ea
8.	Flagging, Specify type	roll	37. Reducer, 1" x 3/4"	ea
9.	Gas, raw	gal	38. Gated "Y", 1 1/2"	ea
10.	Bar Oil	gal	39. Gated "Y", 1"	ea
11.	2- cycle oil, chainsaw (2.5 oz)	6 pk	40. Gated "Y" 3/4 "	ea
12.	Sleeping Bags	ea	41. Shut-off Valve, "	ea
13.	Gatorade	cs	42. In-line Tee, 1 1/2" x 1"	ea
14.	Tarps / Plastic	roll	43. Nozzle, 1 1/2"	ea
15.	Parachute Cord	roll	44. Nozzle, 1"	ea
16.	Tool, Shovel	ea	45. Nozzle, 3/4"	ea
17.	Too I, Pulaski	ea	46. 20 Man First Aid Kit	ea
18.	Tool, Combi	ea	47. Chainsaw Kit	ea
19.	Tool, McLeod	ea	48. Toilet Paper (96 per case)	cs
20.	Tool, Specify Type	ea	49. 1000 ft. Hose Lay Kit	ea
21.	Fusee	cs	50. Garbage Bags	bx
22.	Drip Torch	ea	51. Leadline	ea
23.	Drip Torch Mix, 5 gal.	ea	52. Spike Supply Kit	ea
24.	Coffee Kit w/propane	ea	53. Dolmar (6 per case)	ea
25.	Swivel	ea	54. Sprinkler Kit	ea
26.	Backpack Pump	ea	55. LINE Spike Supply Kit	ea
27.	Pumpkin, specify size	ea	56. Duct Tape	roll
28.	Mark 3 Pump Kit w/fuel	ea	57. House Wrap	roll
29.	2-cycle oil, high pressure pump	qt	58. Staple Gun w/ staples	ea

Team Ordering/Timeline Process:

0630 - Morning Briefing, start of crew time.
 1100 - Last call to change spike camp resource hot food location.
 1600 - *DIVS* to have next day's resource order ready for Planning OPS.

- All crew level orders will be placed through *DIVS* or Branch.
- *DIVS* or Branch will place all orders through Communications Unit.
- All orders will be tracked using the process found on the front of this form.

GPS Datum: NAD 83- Degrees, Decimal, Minutes (DDMM.MM)

Definitions

FOB-Forward Operating Base is a secure forward position established to strategize, design and discuss tactics, and for personnel to transfer information and meet.

Line Spike Camp-Managed by Operations at the *DIVS* level; mobile, short duration and self- sufficient.

Spike Camp-Supported by Logistics, listed in the IAP, numbers in camp are set by 1100, named by Plans.

Emergency Medevac- Life threatening situation requiring immediate medical attention. Handled as per IAP med plan and team SOP's. Communications to clear command channel radio traffic.

Medical Transport-Transport of less serious injury/illness managed by Operations or line Medics back to camp for evaluation and/or treatment.

1000 ft. Hose Lay Kit (Order as "#49")				Spike Supply Kit (Order as "#52")			
Quantity	NFES#	Item	Weight	Quantity	NFES#	Item	Weight
10 ea	1239	Hose 1½"	125 lbs	2 rolls	0071	Duct Tape	4 lbs
10 ea	1238	Hose 1"	84 lbs	4 rolls	0222	Fiber Tape	2lbs
20 ea	1016	Hose ¾"	25 lbs	1 case	0021	Trash Bags	21 lbs
5 ea	0231	1½" Gated "Y"	20 lbs	1 case	0465	Cups for hot liquid	18 lbs
5 ea	0259	1" Gated "Y"	13 lbs	2 ea	0070	16x24 Tent fly	40 lbs
10 ea	0904	¾" Gated "Y"	3 lbs	3 ea	0027	Water Wash Basins	2 lbs
5 ea	0010	Reducers 1½" - 1"	3 lbs	1 case		Liquid Hand Soap / pump	10 lbs
5 ea	0733	Reducers 1" - ¾"	2 lbs	18 cases	1842	MRE's	18 x 20= 360 lbs
10 ea	0738 or 0835	Ball Valve ¾"	5 lbs	48 ea	0022	Sleeping bags (dbl. bag)	48 x 5= 240 lbs
10 ea	0138	Nozzle, 1"	5 lbs	3 cases	0030	AA Batteries, 24 pkg./case	90 lbs
10 ea	0136	Nozzle ¾"	5 lbs	1case	0240	Paper Towels	41 lbs
5 ea	0230	Tee 1½x1½x1"/valve	5 lbs	1 case	0142	Toilet Paper	44 lbs
LINE Spike Supply Kit (Order as "#55")				1roll	0144	Plastic sheeting	45 lbs
				1 roll	0533	P-Cord	9 lbs
Quantity	NFES#	Item	Weight	20 ea	7443	Cubies, 5 gal. Full Potable Water	20 x 40= 800 lbs
20+0H	0022	Sleeping bags	20 x 5= 100 lbs	1 box	1059	12" Bastard Files	9lbs
20 ea	7443	Cubies, 5 gal Full	20x40= 800 lbs	1 ea	3444	2-cycle mix, chainsaw (6 pk 2.5 oz)	2lbs
18 cases	1842	MRE's	18x20=360 lbs	8 gal	1880	Bar Oil	64 lbs
1 sl	0533	P-Cord	9 lbs	15 gal		Regular Gas	120 lbs
3 cases	0030	AA Batteries, 24 pkg./case	90 lbs	1 can		3 lbs. can coffee	3 lbs
1 case	0021	Trash bags	21 lbs	1 ea		2 1/2 gal coffee pot or 3-1 gal	10 lbs
10 rolls	0142	Toilet paper	3 lbs	2ea	0089	Ridge pole	46 lbs
1 roll	0144	Plastic sheeting	45 lbs	12 ea	0083	Pole upright	89 lbs
2 rolls	0222	Fiber Tape	2 lbs	24 ea	0825	Stake Tent	24 lbs
1 ea	3444	2-cycle mix, chain-saw (6 pk 2.5 oz)	2 lbs				
4 gal	1880	Bar Oil	32 lbs				
15 gal		Regular Gas	120 lbs				
1 box	1059	12" Bastard Files	9 lbs				



ACTIVITY LOG (ICS 214)

1. Incident Name:	2. Operational Period: Date From: _____ Date To: _____ Time From: _____ Time To: _____	
--------------------------	--	--

3. Name:	4. ICS Position:	5. Home Agency (and Unit):
-----------------	-------------------------	-----------------------------------

6. Resources Assigned:		
Name	ICS Position	Home Agency (and Unit)

7. Activity Log:	
Date/Time	Notable Activities

8. Prepared by: Name: _____ Position/Title: _____ Signature: _____

ICS 214, Page 1	Date/Time: _____
------------------------	-------------------------





INFECTION CONTROL PROCEDURES

ROCKY MOUNTAIN INCIDENT MANAGEMENT

Facial coverings/masks are **MANDATORY**
in the Incident Command Post

DAILY SAFETY & HYGIENE

- FREQUENTLY WASH HANDS WITH SOAP & WATER
- Regularly use hand sanitizer
- Physical distance (6 feet apart) whenever possible
- Facial coverings/masks are recommended indoors & when physical distancing is not possible

DAILY HEALTH SCREENING - REQUIRED PRIOR TO EVERY SHIFT



SIGNS & SYMPTOMS OF ILLNESS

- | | |
|------------------------------------|------------------------|
| - TEMPERATURE ABOVE 100°F (38°C) | - HEADACHE |
| - NEW ONSET LOSS OF TASTE OR SMELL | - ABDOMINAL DISCOMFORT |
| - FATIGUE- MUSCLE ACHES | - COUGH |
| - SORE THROAT | - CHILLS |
| - SHORTNESS OF BREATH | - DIFFICULTY BREATHING |
| - VOMITING | - DIARRHEA |

— PERSONNEL WITH ILLNESS PROCEDURE —

- HAVE INDIVIDUAL DON A MASK OR AVAILABLE FACIAL COVERING **IMMEDIATELY**
- ISOLATE INDIVIDUAL FROM OTHERS (6 FEET MINIMUM)
- CONTACT THE FIREFIGHTER HEALTH COORIDNATOR IMMEDIATELY
- HAVE ASSOCIATED CREW MEMBERS & OTHERS IN CONTACT DON A MASK OR AVAILABLE FACIAL COVERING
- TREAT LIFE THREATENING ISSUES OR COMPLAINTS AS APPROPRIATE
- REMAIN AT LOCATION AND WAIT FOR MEDICAL PERSONNEL



MEDICAL PLAN (ICS 206WF)

ROCKY MOUNTAIN INCIDENT MANAGEMENT

1. Incident/Project Name	2. Operational Period
Sugarloaf Fire	07/29/2022 0700-1900

3. Ambulance Services			
Name	Location	Phone/Frequency	Advanced Life Support (ALS) Yes No
Laramie Fire	Laramie, WY	307-721-5332	X

4. AIR AMBULANCE SERVICES		
Name	Phone/Freq	Type of Aircraft & Capability
Wyoming Life Flight – Casper	800-806-9158	Bell 407 - Night Vision, Blood - Tail # N941AM
LifeLine 3 - Cheyenne	844-867-4590	A-Star B3 - Night Vision, Blood - Tail # N934EM
Classic Air Medical - Rawlins	800-444-9223	Bell 407 - Night Vision, Blood - Tail # N7160V
Wyoming National Guard	Order Through Air Ops	UH-60 Black Hawk - Night Vision, HOIST – Tail # Grit24

5. Hospitals								
Name Complete Address	GPS DATUM - WGS 84 DD° Degrees Decimal Minutes		Travel Time		Phone	Helipad		Level of Care Facility
	Lat:	Long:	GND	AIR		Yes	No	
Wyoming Medical Center 1233 E. 2 nd Street Casper, WY 82601	42° 50.8546' N	106° 18.4908' W	2.75 hr*	25 min*	307-742-2141	X		Level 2 Trauma Center
Cheyenne Regional 214 E. 23 rd St. Cheyenne, WY 82001	41° 8.4425' N	104° 48.9874' W	3.25 hr*	45 min*	307-634-2273	X		Level 3
Medical Center of the Rockies 2500 Rocky Mountain Dr. Loveland, CO	40° 24.9720' N	104° 59.8171' W	3.75 hr*	55 min*	970-624-1630	X		Level 1 Trauma Center
University of Colorado Hospital 12065 E. 16 th Ave. Aurora, CO 80045	39° 44.5343' N	104° 50.5461' W	4.5 hr*	80 min*	720-848-5120	X		Level 1 Trauma Center Burn Center

*Travel times are from center of fire to the facility and DO NOT include response time to the incident.

6. Division Branch Group	
DIV A	EMS Responders & Capability: EMT 1 - Luanne Baumann, EMTF
	Equipment Available on Scene: BLS Kit
	Medical Emergency Channel: National Forest through Casper Dispatch
DIV Z	EMS Responders & Capability: EMT 2 - Mary Pimm, EMTF EMT 3 - Andrew Gilsdorf, EMTF
	Equipment Available on Scene: BLS Kit, AED
	Medical Emergency Channel: National Forest through Casper Dispatch
STRUCTURE	EMS Responders & Capability: MEDLs will cover throughout the day. Order Helicopter resources early.
	Equipment Available on Scene: ALS Kit, Cardiac Monitor, ACLS
	Medical Emergency Channel: National Forest through Casper Dispatch
CONTINGENCY	EMS Responders & Capability: MEDLs will cover throughout the day. Order Helicopter resources early.
	Equipment Available on Scene: ALS Kit, Cardiac Monitor, ACLS
	Medical Emergency Channel: National Forest through Casper Dispatch
ICP	EMS Responders & Capability: AMB 31 – Grand Ave Ambulance
	Equipment Available on Scene: ALS Kit, Cardiac Monitor, ACLS
	Medical Emergency Channel: National Forest through Casper for IWIs

7. Prepared By (Medical Unit Leader)	8. Date/Time	9. Reviewed By (Safety Officer)	10. Date/Time
Jeff Basamanowicz, MEDL	07/28/2022 (2000)	Pat Medina, SOF2	07/28/2022 (2000)



MEDICAL INCIDENT REPORT (8 LINE)

ROCKY MOUNTAIN INCIDENT MANAGEMENT

Medical Incident Report

FOR A NON-EMERGENCY NON-TRANSPORT INCIDENT:

Work through chain of command to report injured personnel to the Medical Unit Leader (MEDL).

FOR A MEDICAL EMERGENCY:

Identify on-scene incident commander by name and position.

Announce "MEDICAL EMERGENCY" to initiate response from IMT communications / dispatch.

USE THE FOLLOWING ITEMS TO COMMUNICATE THE SITUATION TO COMMUNICATIONS / DISPATCH

- CONTACT COMMUNICATIONS / DISPATCH** (Verify correct frequency prior to starting report)
Ex: "Communications, Div. Alpha. Stand-by for Emergency Traffic."
- INCIDENT STATUS:** Provide incident summary (including number of patients) and command structure.
Ex: "Communications, I have a Red priority patient, unconscious, struck by a falling tree. Requesting air ambulance to Forest Road 1 at (Lat./Long.) This will be Trout Meadow Medical, IC is TFLD Jones. EMT Smith is providing medical care."

Severity of Emergency / Transport Priority	<input type="checkbox"/> RED / PRIORITY 1 - Life or Limb Threatening Injury or Illness. Evacuation Need Is IMMEDIATE Ex: Unconscious, difficulty breathing, bleeding severely, 2°- 3° burns more than 4 palm sizes, heat stroke, disoriented
	<input type="checkbox"/> YELLOW / PRIORITY 2 - Serious Injury or Illness. Evacuation May Be DELAYED If Necessary Ex: Significant trauma, unable to walk, 2°- 3° burns not more than 1-3 palm sizes
	<input type="checkbox"/> GREEN / PRIORITY 3 - Minor Injury or Illness. Non-Emergency Transport Ex: Sprains, strains, minor heat-related illness
Nature of Injury or Illness & Mechanism of Injury	Brief Summary of Injury or Illness (Ex: Unconscious, Struck by Falling Tree)
Transport Request	Air Ambulance, Short Haul/Hoist Ground Ambulance, Other
Patient Location	Descriptive Location & Lat. / Long. (WGS84)
Incident Name	Geographic Name + "Medical" (Ex: Trout Meadow Medical)
On-Scene Incident Commander	Name of On-Scene IC of Incident Within an Incident (Ex: TFLD Jones)
Patient Care	Name of Care Provider (Ex: EMT Smith)

- INITIAL PATIENT ASSESSMENT:** Complete this section for each patient as applicable (start with the most severe patient)
Patient Assessment: See IRPG PAGE 106

Treatment:

- TRANSPORT PLAN:**
Evacuation Location (if different): (Descriptive Location (drop point, intersection, etc.) or Lat. / Long.) Patient's ETA to Evacuation Location:

Helispot / Extraction Site Size and Hazards:

- ADDITIONAL RESOURCES / EQUIPMENT NEEDS:**
Example: Paramedic/EMT, Crews, Immobilization Devices, AED, Oxygen, Trauma Bag, IV/Fluid, Splints, Rope Rescue, Wheeled Litter, HAZMAT, Extrication:

- COMMUNICATIONS:** Identify State Air / Ground EMS Frequencies and Hospital Contacts as Applicable

Function	Channel Name/Number	Receive (RX)	Tone/NAC *	Transmit (TX)	Tone / NAC *
COMMAND					
AIR-TO-GRND					
TACTICAL					

- CONTINGENCY:** Considerations: If primary options fail, what actions can be implemented in conjunction with primary evacuation method? Be thinking ahead!

- ADDITIONAL INFORMATION:** Updates/Changes, etc...

REMEMBER: Confirm ETAs of Resources - Act According To Your Level of Training - Be Alert. Keep Calm - Think Clearly - Act Decisively