



# Sugarloaf Fire

WY-MRF-220267

P2PW7P (0206)

## Sunday, July 31st, 2022

Operational Period 0700-1900

### Safety Starts Here

#### WATCH FOR CHANGING CONDITIONS

Air operations	<ul style="list-style-type: none"> <li>Make sure managers and helicopters are aware of private and military air traffic, report any sightings of non-fire aircraft to air attack immediately</li> </ul>
Helicopter bucket drops	<ul style="list-style-type: none"> <li>Stay clear of flight zones and drop areas, watch out for rotor downwash and hazard trees, keep all people clear, ask "is the mission really needed?" Flying unnecessary missions increases the risk for the pilot and firefighters working near-by.</li> </ul>
Spot Fires	<ul style="list-style-type: none"> <li>Watch for smoldering fires picking up over large areas, patrol for spots especially after torching, post lookouts, grid green areas</li> </ul>
Burn-Out Operations	<ul style="list-style-type: none"> <li>Have crews warn others prior to burn-outs via the radio, time burns to reduce potential for torching</li> </ul>
Chain Saw Operations	<ul style="list-style-type: none"> <li>Use swampers, watch spacing, wear all PPE, warn others to keep clear of falling areas</li> </ul>
Engine Operations	<ul style="list-style-type: none"> <li>Pull off roads to allow traffic to pass, watch for snags and soft shoulders, wear PPE, keep speed down, headlights on, use a spotter when parking in camp, use chock blocks</li> </ul>
Fires Below Crews	<ul style="list-style-type: none"> <li>Remind crews to review LCES principles, use black areas for safety zones, post lookouts</li> </ul>

#### Dehydration

Dehydration is loss of water and important blood salts like potassium (K+) and sodium (Na+). Vital organs like the kidneys, brain and heart can't function without a certain minimum of water and salt. Fluid losses up to 5% are considered mild; up to 10% are considered moderate; and up to 15% are considered severe. Severe dehydration can result in cardiovascular collapse and death if not treated quickly.

**DRINK LOTS OF WATER!!**

## Rocky Mountain CIMT #3

Incident Commander: Bill Waln

Deputy Incident Commander: Pat Pearson

Incident Commander Trainee: Casey Cheesbrough

Available at this site:

Remote Incident Check-in, IAP's, Maps, Finance,  
 Fillable-CTR's, Training, Shift Tickets, Crew Swaps, Demob,  
 and General Messages



## **Welcome and Leaders Intent**

First and foremost, Rocky Mountain Area Complex Incident Management Team Three (Team Three) welcomes you. You are away from family and friend; we will do what we can to support you. Thank-you for being here. We ask you consider yourself a member of our team. This membership does come with certain expectations and responsibilities.

## **Conduct and Behavior**

Our expectation is that you, as a team member, will act in a professional manner representing Team Three and your home unit to the highest of standards. Careless, illegal, inappropriate and/or unsafe actions will not be tolerated. Alcohol and/or illegal drugs are not allowed within the incident environment or while actively assigned to the incident. Each team member has the responsibility to be ready, willing, and able to perform the duties for which they are qualified.

## **Human Rights/Harassment/Discrimination**

Team Three fully supports mutual respect and everyone's right to a workplace that does not tolerate any form of harassment or discrimination. You are expected to act in a professional manner. It is your responsibility to stop inappropriate actions or comments immediately upon becoming aware of them. Any form of harassment must be reported to the Human Resource Specialist and/or Incident Commander immediately.

## **Safety**

Your safety, and the safety of the public, is our primary commitment. All actions must reflect this commitment. The commitment to, and accountability for, safety is a joint responsibility of all team members, managers, and administrators. As a member of Team Three you are part of the overall team safety.

## **Engagement/Disengagement**

Team Three will focus on safe, efficient, and cost-effective incident management. Leadership, your leadership is required. The 10 Standard Fire Orders and the 18 Watch-Out Situations will guide our tactical decisions, and implementation of LCES is expected before engaging in all fireline operations.

We look forward to working with you as a valuable member of our team. If you have any questions or feedback, please feel free to contact any Command and General Staff member.

*ISI Bill Waln*

---

Bill Waln-Incident Commander

*ISI Pat Pearson*

---

Pat Pearson-Incident Commander

## INCIDENT OBJECTIVES (ICS 202)

<b>1. Incident Name:</b> Sugarloaf	<b>2. Operational Period:</b> Date From: 7/31/22 Time From: 0700	Date To: 7/31/22 Time To: 1900
<b>3. Objective(s):</b>  Manage the risk to firefighters and the public by utilizing a risk-based approach to decision-making through quality tradeoff conversations with the host agency, partners and stakeholders.  Utilize appropriate fire strategies to minimize fire impacts on residences, ranches, and critical community infrastructure to reduce the potential for adverse health, social, financial and economic hardships.  Consider operational strategies that minimize smoke impacts to smoke sensitive areas and receptors by adjusting tactics, monitoring and following guidance in State smoke management plans and coordination with State and local Air Quality agencies.  Maintain and improve relationships with local partners, stakeholders and other public groups.  Coordinate release of information with the host agency representative.		
<b>4. Operational Period Command Emphasis:</b>  Ensure communications with line resources. Continue improving logistical support and communications. Establish safety protocols including processes for potential Incident Within Incident (IWI) for all resources.		
General Situational Awareness  LCES. Check and ensure radio communications.		
<b>5. Site Safety Plan Required?</b> Yes <input type="checkbox"/> No <input checked="" type="checkbox"/> NOT APPLICABLE Approved Site Safety Plan(s) Located at:		
<b>6. Incident Action Plan</b> (the items checked below are included in this Incident Action Plan):		
<input checked="" type="checkbox"/> ICS 203 <input checked="" type="checkbox"/> ICS 204 <input checked="" type="checkbox"/> ICS 205 <input type="checkbox"/> ICS 205A <input checked="" type="checkbox"/> ICS 206	<input type="checkbox"/> ICS 207 <input checked="" type="checkbox"/> ICS 208 <input checked="" type="checkbox"/> Map/Chart <input checked="" type="checkbox"/> Weather Forecast/Tides/Currents	<b>Other Attachments:</b> <input checked="" type="checkbox"/> FIRE BEHAVIOR FORECAST <input checked="" type="checkbox"/> TRAINING MESSAGE <input checked="" type="checkbox"/> INFECTIOUS CONTROL PROCEDURES <input checked="" type="checkbox"/> FINANCE PROCEDURES
<b>7. Prepared by:</b> Name: PETER BARTH      Position/Title: PSCC      Signature: <u>Peter Barth</u>		
<b>8. Approved by Incident Commander:</b> Name: <u>BILL WALN</u> Signature: <u>Bill Waln</u>		
ICS 202	IAP Page _____	Date/Time: 7/30/2022

# Sugarloaf Fire

## Operations Section

**Planning Chief** Jay Mickey, Brandon Bonenberger (T)  
**Field Chief** Matt Norden, Nick Collard (T)

### Operational Period

July 31, 2022 0700-1900

### Incident Commander and Staff

**Incident Commander** Bill Waln, Casey Cheesbrough (T)  
**Deputy IC** Pat Pearson  
**Safety** Pat Medina, Brian Ayers  
 Tedd Teahon (T), Ali Robb (T)  
**Liaison** Sam Carle, Josh Shroyer (T)  
**Medical** Jeff Basamanowicz  
 Joel Simonson (T)  
**Firefighter Heath Cord.** Payton Winsor - MEDL (T)  
**Information** Jon Ashford, Dawn Sanchez (V)  
 Anne Reid (T)

### Division/Group

**Division A** DIVS Seth McKinney, Blake Cobb (T)  
**Division Z** DIVS Jon Stonelake, Tyler Nathe (T)  
**Structure** GRP Mike Willardson  
**Contingency** GRP Chris Rokosh, Cody Miller (T)

### Agency Representatives

**USFS AA** Russ Bacon, Frank Romero  
 Rob Robertson (T)  
**Covid AA** Chris Olds  
**Wyoming State AA** Jerod Delay  
**Albany County AA** Chad Dinges (Fire Warden)  
**Wyoming State AR** Travis Pardue  
**BLM-WY-Rawlins** John Elliott  
**Albany County Sheriff** Aaron Appelhans

### Air Operations Branch

**Air Branch Director** Carolyn Blatz  
**Air Support Group Supervisor** Ken Ostrom  
**Air Tactical Group Supervisor** Bryan Brazzeal  
**Helibase Manager** Brandon Williams

### Logistics Section

**Chief** Randy Spiering, Colleen Gadd  
 Ken Hehr (T)  
**Ground Support** Darin Gehring  
**Comms Leader** Walter Warrick  
**Comm Tech** Walt Burns, Jim Rooney  
**IT Specialist** Kevin Watts, Dominic Rogers (T)  
 Rocio Del Arroyo (T)  
**Facilities** Joe Ulozas, Ish Ennis  
**Supply** Kathy Porter, Dan Baker (T)  
**Food** Wally Leander, Jamie Rietz (T)

### Planning Section

**Chief** Peter Barth, Mike Rubenstein  
**Resources** Kellie Stover  
**Situation** Chad Lewis, Brenda Wasielewski (T)  
**Fire Behavior** David Greathouse  
**Meteorologist** Jeff Colton, Brandon Wills (T)  
**GIS Specialist** David Sinton, Sarlyn McCormick (V)

**Base Camp** Patrick McCoy, Kurt Stagner (T)  
 Tim Gilg, Westly Stout (T)  
**Ordering** Travis Chadwick  
**Receiving/Distribution** Angela Stasewich (T)

### Finance Section

**Chief** Mavis Biastoch, Patty Wyatt,  
 Kayla Davin (T)  
**Cost** Natasha Goedert  
**Procurement** Sarah Boyd  
**Time** Arlene Tucker  
**Compensation** Annette Pintado

Prepared By: Kellie Stover - RESL





# INCIDENT Weather Forecast



**Forecast No:** 4  
**Prediction For:** Sunday  
**Shift Date:** July 31, 2022  
**Forecast Issued:** July 30, 2022 at 2000

**Name of Incident:** Sugarloaf Fire  
**Unit:** Medicine Bow NF  
**Incident Meteorologist:** Jeff Colton (208) 577-1617  
 Brandon Wills (t) 734-347-1407

**Discussion:** A surface high pressure will persist over the Central Rockies, allowing lower relative humidity and warmer conditions to occur into early next week. A cold front will arrive by late Tuesday of next week bringing more moisture and breezy conditions to the area.

### Forecast for Today:

*Erratic winds possible near thunderstorms this afternoon.*

**Sky/Weather:** Partly cloudy (30-40%) with isolated afternoon showers and thunderstorms.

	<u>Dodge Creek 7,400'</u>		<u>Cow Creek 7,800'</u>		<u>Sugarloaf 8,200'</u>	
<b>Max Temperature:</b>	82		82		83	°F
<b>Min RH:</b>	20		21		22	%
<b>Wind (20 FT):</b>	Moderate inversion breaking around 1030.					
...	SE	8	SE	8	SSE	8 mph
...	Gusts:	15	Gusts:	13	Gusts:	13 mph
<b>Haines Index:</b>	5		5		5	
<b>LAL:</b>	3		2		2	
<b>Chance of Precipitation:</b>	25		20		20	%
<b>Tonight's Min Temperature:</b>	56		59		60	°F
<b>Tonight's Max RH:</b>	60		50		45	%
<b>Tonight's Wind (20 FT):</b>	Inversion settling in after 2100.					
...	WSW	8	WSW	6	W	6 mph
...	Gusts:	13	Gusts:	13	Gusts:	13 mph
<b>Tonight's Haines Index:</b>	5		5		5	
<b>Tonight's LAL:</b>	1		1		1	
<b>Tonight's Chnc of Precip:</b>	15		15		15	%

### Forecast for Monday:

**Sky/Weather:** Partly cloudy (30-40%) with isolated isolated showers and thunderstorms.

	<u>Dodge Creek 7,400'</u>		<u>Cow Creek 7,800'</u>		<u>Sugarloaf 8,200'</u>	
<b>Max / Min Temperature:</b>	86	59	86	62	86	64 °F
<b>Min / Max RH:</b>	16	55	17	45	17	45 %
<b>Wind (20 FT):</b>	Inversion breaking by 1030.					
...	NNE	8	ENE	7	N	7 mph
...	Gusts:	13	Gusts:	13	Gusts:	13 mph
<b>Haines Index:</b>	5		<b>LAL:</b>	1	<b>Precip Chance:</b>	10

### Extended Outlook:

Dry and warmer weather expected to start off the new work week. Moisture starts moving back in from the south as early as Tuesday with isolated thunderstorms returning to the forecast. Breezy to windy conditions are also possible Tuesday and Wednesday with temperatures cooling slightly.

		<u>Max T</u>	<u>Min T</u>	<u>Min RH</u>	<u>Max RH</u>	<u>Ridge Winds @ 1500</u>	<u>Weather</u>
<b>Cow Creek 7,800'</b>	<b>Tue:</b>	83	58	25	75	W @ 19 G33	Windy & Scattered T-Storms
	<b>Wed:</b>	80	58	28	60	WSW @ 13 G23	Breezy w/ Isolated T-Storms
	<b>Thu:</b>	83	59	23	60	SW @ 14 G25	Breezy w/ Isolated T-Storms

**MICROBURST** - Small downbursts that may induce dangerous gusty and erratic winds over a small area less than 3 miles in outflow diameter.

# FIRE BEHAVIOR FORECAST

<b>FORECAST NUMBER: 3</b>	<b>TYPE OF FIRE: Wildfire</b>
<b>FIRE NAME: Sugarloaf</b>	<b>OPERATIONAL PERIOD: 7/31/2022 Day</b>
<b>DATE ISSUED: 7/30/2022</b>	<b>TIME ISSUED: 2000</b>
<b>UNIT: Medicine Bow National Forest</b>	<b>SIGNED: David Greathouse</b> <b>Typed/printed: David Greathouse - FBAN</b>

## WEATHER:

**\*\*\*Another day of drying. Watch for pop up thunderstorms\*\*\***  
See fire behavior forecast for details

### Weather Threshold's That Shout WATCH OUT (Per Laramie FDRA Pocket card)

Temperatures greater than 75°, relative humidity less than 15%, 20' winds greater than 15mph

## FUELS:

**Division A** – The fuels consist of open stands of juniper at the lower elevations transitioning to more Ponderosa Pine with scattered Aspen groves at the higher elevations. Sagebrush and short grass along with pockets of heavy dead and down can be found on the surface.

**Division Z** – The fuels consist of a mixed stand of Subalpine Fir, Lodgepole, Ponderosa and Aspen with heavy loads of dead and down material on the surface. In the open areas, sagebrush and grass are present. Grasses and forbs can be found along Cow Creek.

Scattered areas of dead standing timber can be found on both divisions

The fuels for this time of year are dry. The current ERC-Y is forecasted to be in the 80<sup>th</sup> percentile, which is above average for this time of year. Live fuel moisture in Sagebrush is at 122% and the 100- and- 1000 fuel moisture content are at 13% and 12% respectively. At these moistures, expect the Sagebrush and heavy fuels to contribute to fire intensity

## FIRE BEHAVIOR:

### General:

Another warm and dry day will bring an increase of fire activity Areas that may not have had observable activity the last couple days may become more active. Expect active surface fire with an occasional torching tree. Watch for roll out in the steep terrain, if this occurs and fire gets established. A short uphill surface run with single tree and group tree torching is possible.

Maximum Surface Fire Potential  
(Head fire, upslope @ 45%, winds upslope)

Rate of Spread	Flame Length	Probability of Ignition
3-6 ch/hr	3-6'	60%-70%

## AIR OPERATIONS:

Gusty outflow winds, hail and lighting could hamper air operations in the afternoon

## SAFETY:

"I will not allow yesterday's success to lull me into today's complacency, for this is the great foundation of failure."

Og Mandino.

DIVISION/GROUP ASSIGNMENTS							
<b>Sugarloaf Fire</b>				Branch		Division	
						<b>Alpha</b>	
Operational Period							
7/31/22	0700	7/31/22	1900				
<b>Operations Personnel:</b>							
Operations Chief (Plans)		Jay Mickey Brandon Bonenberger (T)		Division/Group Supervisor		Seth McKinney Blake Cobb (T)	
Operations Chief (Field)		Matt Norden Nick Collard (T)		Air Attack Supervisor		Bryan Brazzeal	
Safety Officer		Field: Kurt Schierrenbeck Brian Ayers Tedd Teahon (T)		Medical Unit Leader		Joel Simonson (T)	
RO #	Item Code	Resource	LWD	Leader Name	# Person	Drop Off Pt/Time	Pick Up Pt/Time
O-57	TFLD		8/11	Brent Johnson	1	Spike/0700	Spike/1900
C-3	HC1	Alpine	8/8	James Champ	23	Spike/0700	Spike/1900
C-7	HC1	Roosevelt	8/1	Larry Money	21	Spike/0700	Spike/1900
C-8	HC1	Arrowhead	8/5	Joe Suarez	20	Spike/0700	Spike/1900
C-2	HC2IA	Craig	7/31	Logan Blakenship	20	Spike/0700	Spike/1900
C-6	HC2IA	Miller Timber 1A	8/7	Ya Shima Maidher	20	Spike/0700	Spike/1900
A-13	HE2S	Twin Falls Helitack	8/7		9	Spike/0700	Spike/1900
E-14	ENG3	Arizona 331	8/12	Mike Hale	4	Spike/0700	Spike/1900
O-29	HEQB		8/11	Jared Hawe	1	Spike/0700	Spike/1900
O-73	HEQB (T)		8/12	Blake Koelling	1	Spike/0700	Spike/1900
E-3	DOZ2	Eldorado Dozer 3	8/12	Dan Stark	3	Spike/0700	Spike/1900
E-4	DOZ2	Rittberger	8/9	Klinton Rittberger	2	Spike/0700	Spike/1900
O-26	EMTF	EMT1	8/10	Luanne Baumann	1	Spike/0700	Spike/1900
E-83	VUTV	Med Team 21	8/12	Rebecca Blanchard	2	Spike/0700	Spike/1900
<b>Work Assignments:</b>							
TASK: Scout, construct, and prep direct and indirect fireline.							
PURPOSE: Prepare for burnout operations.							
END STATE: Fireline in the correct location with the right dimensions to contain the fire.							
<b>Special Instructions:</b>							
Grand Avenue Ambulance staged in Alpha.							
Medical Support Unit available at FOB.							
Arrowhead will scout and develop UAS operations.							
IHC's will scout lines and develop firing plan for proposed operations.							
Begin placing hoselay along inaccessible areas.							
FOB's Fonvielle and Larson in Division Alpha.							
<b>Communication Summary</b>							
<b>See Communication Plan</b>							
Prepared By: Kellie Stover		Position: RESL		Signature:			
Date/Time: 7/30/2022 2036							
						# Personnel	130

DIVISION/GROUP ASSIGNMENTS							
<b>Sugarloaf Fire</b>				Branch		Division	
						<b>Zulu</b>	
Operational Period							
7/31/22	0700	7/31/22	1900				
Operations Personnel:							
Operations Chief (Plans)		Jay Mickey Brandon Bonenberger (T)		Division/Group Supervisor		Jon Stonelake Tyler Nathe (T)	
Operations Chief (Field)		Matt Norden Nick Collard (T)		Air Attack Supervisor		Bryan Brazzeal	
Safety Officer		Field: Kurt Schierrenbeck Brian Ayers Tedd Teahon (T)		Medical Unit Leader		Joel Simonson (T)	
RO #	Item Code	Resource	LWD	Leader Name	# Person	Drop Off Pt/Time	Pick Up Pt/Time
C-5	HC1	San Juan	8/9	John Allbright	23	Zulu Spike/0700	Zulu Spike/1900
C-1	HC2IA	Miller Timber 4	8/2	Mychal Hortert	20	Zulu Spike/0700	Zulu Spike/1900
C-4	HC2IA	OWF Naches	7/31	Austin Betts	19	Zulu Spike/0700	Zulu Spike/1900
O-27	EMTF	EMT3	8/10	Andrew Gilsdorf	1	Zulu Spike/0700	Zulu Spike/1900
O-28	EMTF	EMT2	8/10	Mary Pimm	1	Zulu Spike/0700	Zulu Spike/1900
O-61	REMS	REMS 41	8/13	Adam Mack	1	Zulu Spike/0700	Zulu Spike/1900
Work Assignments:							
<p>TASK: Scout and construct direct and indirect fireline.</p> <p>PURPOSE: Keep fire from impacting values at risk.</p> <p>END STATE: Fireline in the correct location with the right dimensions to contain the fire.</p>							
Special Instructions:							
<p>Emergency Response Logistics staged in Zulu.</p> <p>Medical Support Unit available at FOB.</p>							
Communication Summary							
<b>See Communication Plan</b>							
Prepared By: Kellie Stover		Position: RESL		Signature:			
Date/Time: 7/30/22 2030							
						# Personnel	67



DIVISION/GROUP ASSIGNMENTS							
<b>Sugarloaf Fire</b>				Branch		Division	
				Structure		Operational Period	
7/31/22	0700	7/31/22	1900				
<b>Operations Personnel:</b>							
Operations Chief (Plans)		Jay Mickey Brandon Bonenberger (T)		Division/Group Supervisor		Mike Willardson BJ Clark (T)	
Operations Chief (Field)		Matt Norden Nick Collard (T)		Air Attack Supervisor		Bryan Brazzeal	
Safety Officer		Field: Kurt Schierrenbeck Brian Ayers Tedd Teahon (T)		Medical Unit Leader		Joel Simonson (T)	
RO #	Item Code	Resource	LWD	Leader Name	# Person	Drop Off Pt/Time	Pick Up Pt/Time
O-31	TFLD		8/10	Richard Palestro	1	ICP / 0700	ICP / 1900
O-58	TFLD		8/11	Todd Weiler	1	ICP / 0700	ICP / 1900
O-56	TFLD (T)		8/10	Calvin Hoffman	1	ICP / 0700	ICP / 1900
E-15	ENG3	Apache Sitgraves 361	8/11	Kyle Nuttall	7	ICP / 0700	ICP / 1900
E-1	ENG4	Gunnison 24	8/10	Ben Brack	5	ICP / 0700	ICP / 1900
E-16	ENG4	Goshen Hole	8/10	Rick Teeters	3	ICP / 0700	ICP / 1900
E-2	ENG6	Worland E62	8/9	Ben Gomez	3	ICP / 0700	ICP / 1900
E-5	ENG6	Grand Fire 340	8/10	Brian Faith	4	ICP / 0700	ICP / 1900
E-6	ENG6	BLM 1605	8/9	Jennifer Fensel	8	ICP / 0700	ICP / 1900
E-8	ENG6	BLM 2602	8/1	Scott Manahan	3	ICP / 0700	ICP / 1900
E-17	ENG6	Torrington Wildland 1	8/9	Luis Correa (T)	3	ICP / 0700	ICP / 1900
E-18	ENG6	Natrona Br 7-4	8/10	Bryan Morton	3	ICP / 0700	ICP / 1900
E-19	ENG6	South Dakota 621	8/11	Trenton Wiese	3	ICP / 0700	ICP / 1900
E-20	ENG6	Colorado River	8/11	John Bennett	3	ICP / 0700	ICP / 1900
E-62	ENG6	Med Bow E651	8/10	Mark Herrington	4	ICP / 0700	ICP / 1900
E-63	ENG6	Med Bow E618	8/10	Brent Lytle	4	ICP / 0700	ICP / 1900
E-71	ENG6	Big Laramie 1	8/8	Shawn Sommerfeld	3	ICP / 0700	ICP / 1900
E-72	ENG6	Albany Central Brush 14	8/8	Dylan Whitmer	2	ICP / 0700	ICP / 1900
E-22	WTT1	Cambell County	8/9	Jacob Millard	2	ICP / 0700	ICP / 1900
E-69	WTS2	Yoder Tender	8/11	David Hess	2	ICP / 0700	ICP / 1900
E-76	WTS2	Centennial 8	8/6	Eric Gregery	2	ICP / 0700	ICP / 1900
<b>Work Assignments:</b>							
TASK: Prep structures.							
PURPOSE: Reduce impact to structures.							
END STATE: Defensible space is developed around structures.							
<b>Special Instructions:</b>							
Grand Avenue Ambulance staged in Alpha.							
Medical Support Unit available at FOB.							
<b>Communication Summary</b>							
<b>See Communication Plan</b>							
Prepared By: Kellie Stover		Position: RESL			Signature:		
Date/Time: 7/30/2022 2045							
						# Personnel	69



# AIR OPERATIONS SUMMARY

Prepared By: Carolyn Blatz

Prepared Date: 07/30/2022

Prepared Time: 1730

<b>1. INCIDENT NAME:</b> Sugarloaf	<b>2. OPS PERIOD DATE:</b> July 31, 2022	<b>START TIME:</b> 0700	<b>END TIME:</b> 2100	<b>SUNRISE:</b> 0557	<b>SUNSET:</b> 2020 PUMPKIN: 20502
<b>3. REMARKS (Safety Notes, Hazards, and Air Operations Special Equipment, etc.):</b> Helibase Lat/Long 42 10.907 x 105 44.020  Order all Helicopters and Air Attack through Sugarloaf Helibase.  Send: <a href="mailto:sugarloafhelibase22@gmail.com">sugarloafhelibase22@gmail.com</a> ,  AVOID OVERFLIGHT OF STRUCTURES WITH EXTERNAL LOADS. FOLLOW WIND LIMITATION PROTOCOLS WHEN CONDUCTING AIR OPERATIONS.					
<b>4. Initial Attack:</b>  Medivac: 7TA					
<b>5. TFR #:</b> 2/8660					

6. PERSONNEL	NAME	PHONE #	7. FREQUENCIES	AM	FM	8. FIXED-WING- Type/Make-Model/N#/Base
AOBD	Carolyn Blatz	573-778-2810	A/A TFR	126.8000		LATS and SEATS order thru Casper
ASGS	Ken Ostrom	307-272-3266	A/A Rotor			Dispatch
HEBM	Brandon Williams	208-320-6493				AA OJK Bryan Brazzeal N690JK order
ATGS	Bryan Brazzeal	435-632-6412				thru Helibase
UASP	Joe Suarez	559-285-9128	A/G Primary		168.4000	
			A/G Secondary			
Aviation Officer	Scott Headrick	720-209-2303				
CPC Dispatch		307-233-1141				

**9. Casper Dispatch Zone Aircraft**

FAA N#	TY	MAKE/ MODEL	BASE	AVAIL	START	REMARKS	FAA N#	TY	MAKE/ MODEL	BASE	AVAIL	START	REMARKS
3AJ	1	CH-47	KLAR	0900	0800	Bucket	7TA	3	AS-350	Helibase	0800	0700	Recon, IA, W
9RH	1	KMAX	KDGW	0900	0800	Bucket	20HX	3	AS-350	Helibase	0800	0700	Recon, IA, W
214B	1	214B	KLAR	0900	0800	Bucket							
GRIT 24	1	UH60	KCYS	0900	0800	NG Hoist	UR 31		UAS				Arrowhead
8EC	2	B-205A1++	Helibase	0800	0700	CW Shuttle							

10. TASK/MISSION/ ASSIGNMENT (Type/ function includes: Air Tactical, Retardant, Recon, Personnel Transport, Bucket Operations, SAR, etc.)			
TYPE/FUNCTION	NAME OF PERSONNEL OR CARGO (If applicable) or instructions for tactical aircraft	FLY FROM	FLY TO
Recon / Logistics / Pax Transport	As Requested by Operations / Air Attack	Base	Fire
Bucket Support / Retardant	As Requested by Operations / Air Attack	Base	Fire

INCIDENT RADIO COMMUNICATIONS PLAN I-205		1. INCIDENT NAME		2. DATE/TIME PREPARED		3. OPERATIONAL PERIOD DATE/TIME					
SUGARLOAF FIRE		SUGARLOAF FIRE		7/30/2022 1900		07/31/2022 0700 - 1900					
4. BASIC RADIO CHANNEL UTILIZATION											
Ch #	Function	Channel Name	Assignment	RX Freq	N/W	RX Tone/NAC	TX Freq	N/W	TX Tone/NAC	Mode Analog (A) Digital (D) Mixed (M)	Remarks
1	COMMAND	CMD 1	COMMAND	169.7500	N	146.2	167.1000	N	146.2	A	
2	COMMAND	CMD 2	COMMAND	173.0375	N	146.2	167.3250	N	146.2	A	
3	COMMAND	CMD 3	FUTURE		N	146.2		N	146.2	A	
4	TACTICAL	TAC 1	DIV A	168.2000	N	146.2	168.2000		146.2	A	
5	TACTICAL	TAC 2	DIV Z	168.6000	N	146.2	168.6000	N	146.2	A	
6	TACTICAL	TAC 3	Structure Group	166.7250	N	146.2	166.7250	N	146.2	A	
7	TACTICAL	TAC 4	DIV	168.0500	N	146.2	168.0500	N	146.2	A	
8	TACTICAL	TAC 5	DIV	166.7750	N	146.2	166.7750	N	146.2	A	
9	TACTICAL	TAC 6	DIV	168.2500	N	146.2	168.2500	N	146.2	A	
10	VFIRE21	TAC		154.2800	N	NONE	154.2800	N	156.7	A	
11	COW CREEK MTN	COW MTN	DISPATCH	173.7625	N	110.9	164.8000	A	167.9	A	EMERGENCY USE IF COMMAND FAILS
12	BLM LARAMIE RPT	LARPEAKR	DISPATCH	168.2750	N	NONE	171.7250	A	131.8	A	EMERGENCY USE IF COMMAND FAILS
13	AIR TO GROUND	A/G PRI	PRIMARY	168.4000	N	NONE	168.4000	A	NONE	A	PRIMARY
14	AIR TO GROUND	A/G SEC	SECONDARY	166.6125	N	NONE	166.6125	A	NONE	A	SECONDARY
15	LOGISTICS	VMED 28	EMS	155.3400	N	NONE	155.3400	A	156.7	A	AIR AMBULANCE
16	AIR GUARD	AIR GUARD	EMERGENCY USE	168.6250	N		168.6250	A	110.9	A	EMERGENCY USE ONLY
5. Special Instructions:		Post Human Repeaters where Needed. Try another command channel if having troubles. Current CLONE :BK073022									
6. I-205 Prepared By: Communications Unit Leader				Name: COML Walter Warrick				Signature:			

# SUGARLOAF FINANCE PROCEDURES

Finance is 100% electronic.

Finance email: [2022.sugarloaf.finance@firenet.gov](mailto:2022.sugarloaf.finance@firenet.gov)

After completing the check-in form, from the QR code link on the front of the IAP, please email electronic copies of the following documents as applicable:

- Contract/Agreement/State Cooperative Agreement
  - Casual Hire Form
  - Resource Order
  - Crew Manifest
- Please submit completed CTRs and/or Shift Tickets signed by immediate supervisor **every 4-5 days**.
    - Electronic CTRs and Shift Tickets are available through the QR code on the IAP cover.
    - A legible photo is also acceptable.
- \*\* All time, must include required justifications for hazard pay, compensable meal breaks or excess hours. Don't forget name, resource order # and date. Also, please include a valid phone # and email address.
- ✓ **Medical.** Please work directly with the **Medical Unit Leader**. The MEDL will work with Finance to assure forms are available and completed.
  - ✓ **Damages or Claims.** Do not wait until day of demob. An electronic OF-289, *Property Loss or Damage Report*, is available through the QR Code on the IAP cover. Contact Comp/Claims (or FSC) with questions. Include witness statements, signatures and your contact info.

\*Please include the word "TIME" in the subject line of your email when sending CTRs/Shift Tickets.

Email all Finance documentation to: [2022.sugarloaf.finance@firenet.gov](mailto:2022.sugarloaf.finance@firenet.gov)

If you are sending other pertinent information or questions, please send a separate email with appropriate subject line, ie: "Question on time" or "Explanation of travel."

For time reporting questions, please contact **Finance at (425) 324-1367**.

For illness, injury, or claims, please contact **Comp/Claims at (425) 324-1368**.



# CHARACTERISTICS OF A GOOD TRAINER/TRAINEE!



## TRAINER

- ✓ Adapt to trainee's needs
- ✓ Be patient
- ✓ Delegate and trust your trainee
- ✓ Be accessible and approachable
- ✓ Listen to trainee's questions
- ✓ Be knowledgeable

## TRAINEE

- ✓ Request an evaluation
- ✓ Ask questions
- ✓ Take required classes as soon as you can
- ✓ Make sure your task book has all the appropriate signatures/dates
- ✓ Communicate your ideas and thoughts
- ✓ Be adaptable

**Before you Demob, remember to come see me with your  
evaluation (225) and task book.**

**Training Specialist (TNSP) - Wendy Fischer**

**[Wendy\\_fischer@firenet.gov](mailto:Wendy_fischer@firenet.gov) (970) 759-9610**

## Sugarloaf Incident Phone List

Fire Information	307-314-2244
Safety / Medical	720-749-7222
Check-In	307-258-7122
Training	970-759-9610
Finance	425-324-1367
Comp/Claims	425-324-1368
Operations / Resources	605-890-9985
Demobilization	719-250-8014

### Logistic Support Services

**Showers** - 0600-1200 and 1400-2200 at the FOB

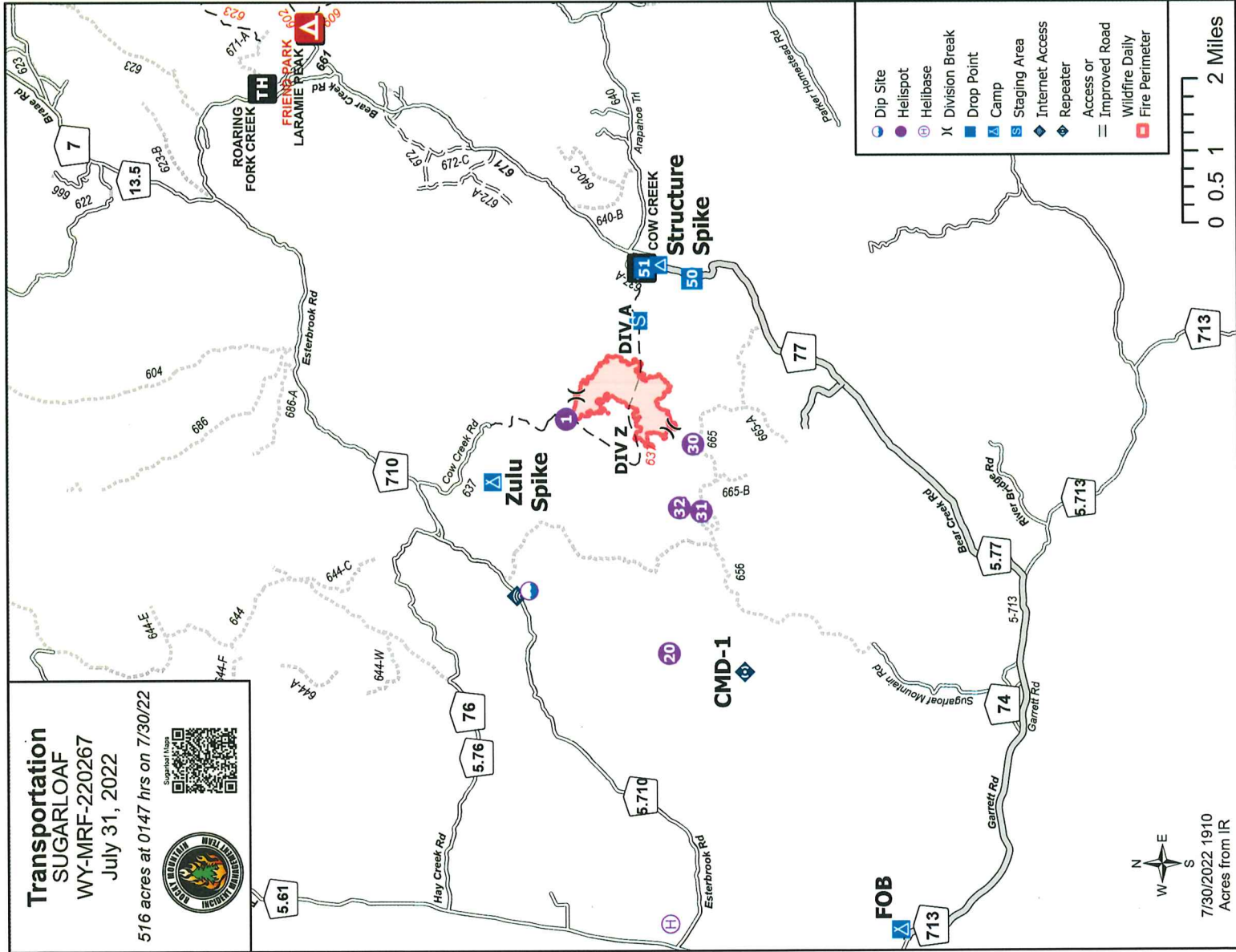
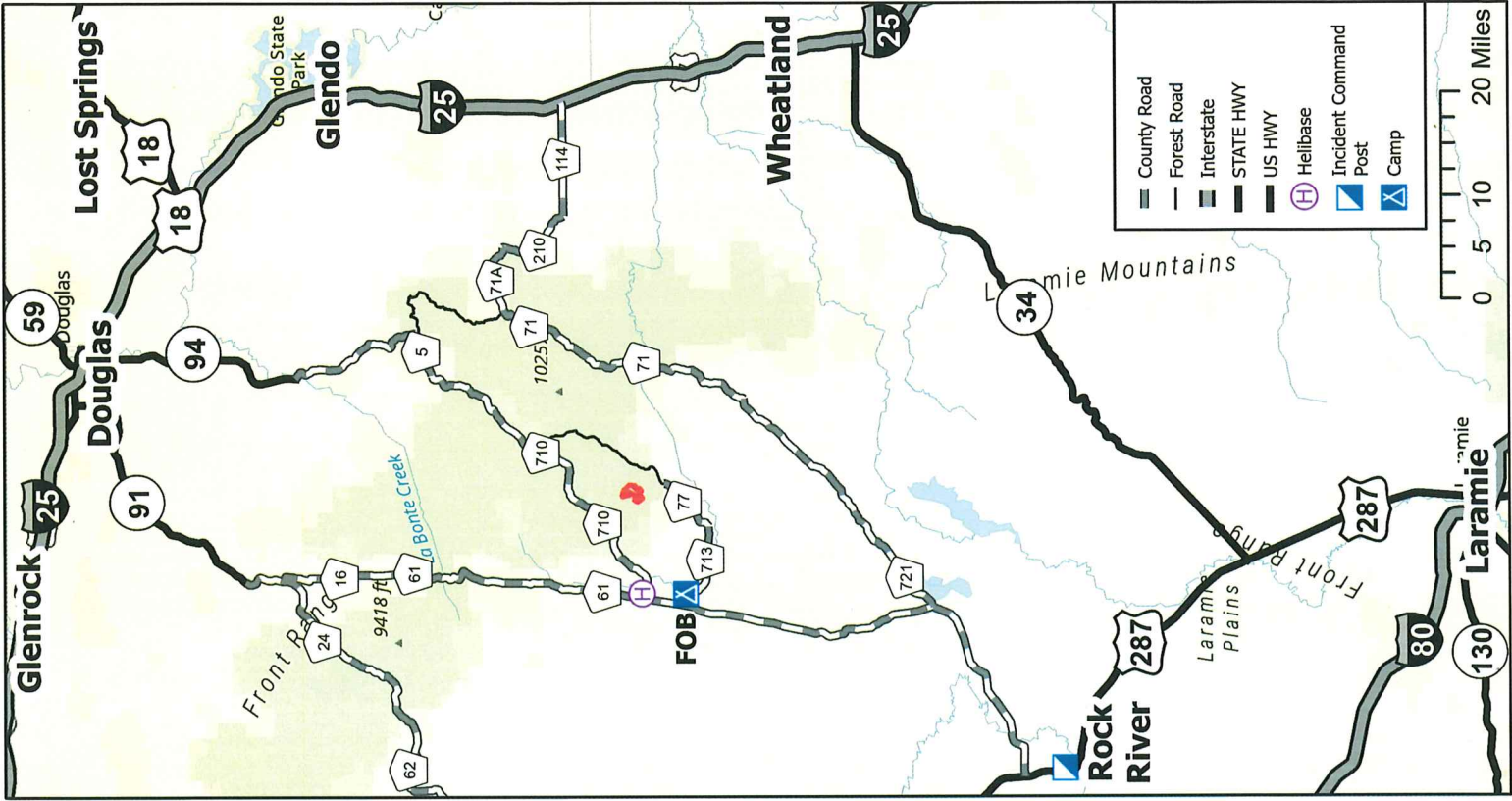
**Mechanic**- 0600-2200 at the FOB

**Fuel** - 0600-2200 at the FOB

#### **Food**

FOB 0600-0800 and 1830-2030

Spike Camps 0600 and 2000 delivery



**Transportation**  
 SUGARLOAF  
 WY-MRF-220267  
 July 31, 2022

516 acres at 0147 hrs on 7/30/22

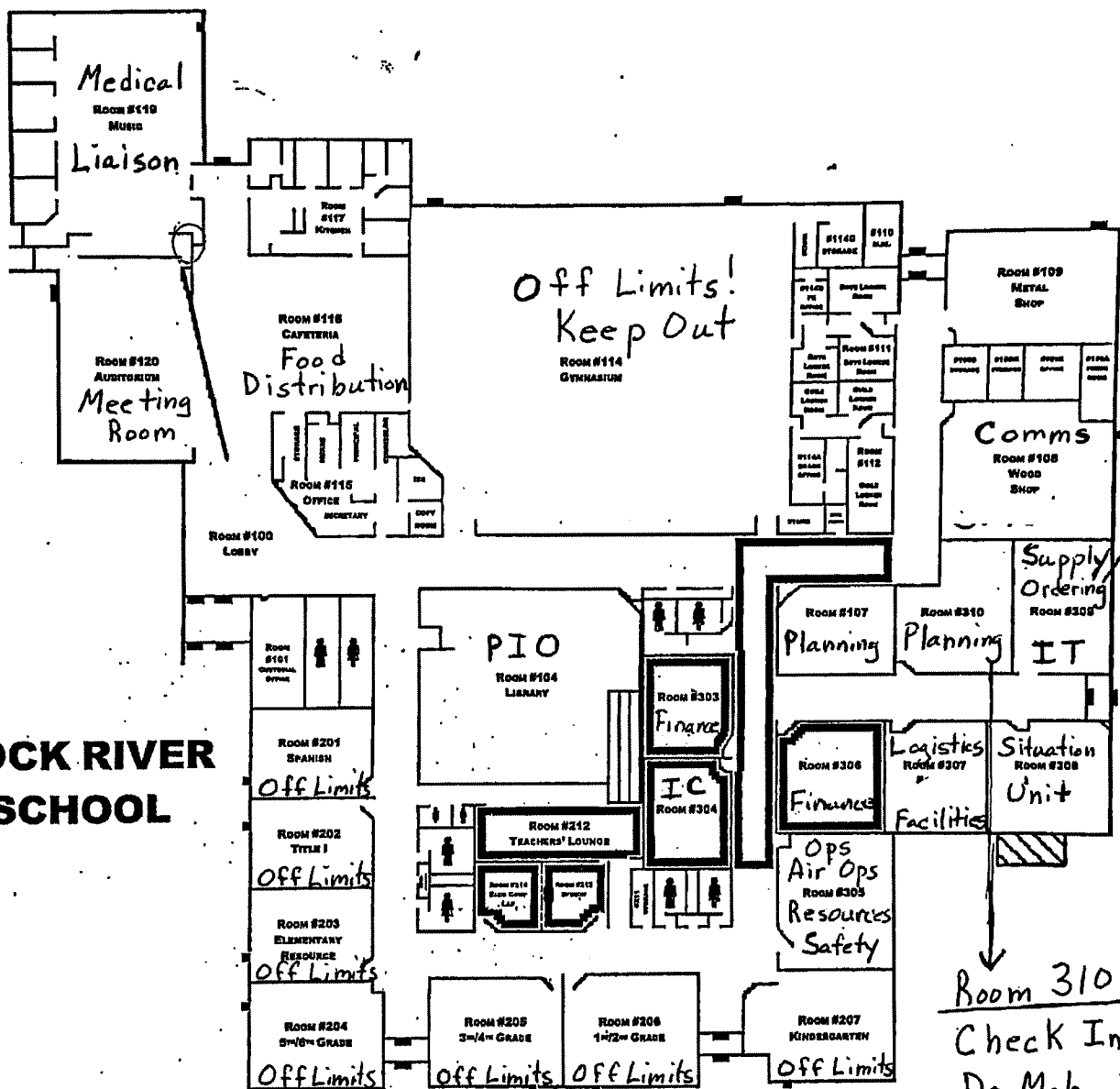


7/30/2022 1910  
 Acres from IR

# MAP OF ROCK RIVER SCHOOL

North ↑

**ROCK RIVER  
SCHOOL**







# Rocky Mountain IMT Black



## Line Supply Order

Date & Time Order was Placed	Order # (BR+DIVS + #)	Location & Time for Delivery (Division/LZ/DP/Lat Long)	Mode of delivery (Driven/Helo/DIVS to Pick up)

Order received in Communications by (name & time):

Order received in Supply by (name & time):

Order received in Transportation by (name & time):

Order received in Helibase by (name & time):

Order shipped to line unit by (name & time): (Send this sheet to the line with the order)

#	Item	Amount		Item	Amount
1.	Meals, Breakfasts	ea	30.	Slingable Blivet	ea
2.	Meals, Lunches	ea	31.	Folding Tank, specify size	ea
3.	Meals, Dinners	ea	32.	Lightweight Pump Kit (Cache)	ea
4.	Meals, MRE's	cs	33.	Hose, 1 1/2"	ea
5.	Water, 5 gal. cubic	ea	34.	Hose, 1"	ea
6.	Batteries- AA	1-Flat	35.	Hose, 3/4"	ea
7.	Batteries, Specify Type	pk	36.	Reducer, 1 1/2" x 1"	ea
8.	Flagging, Specify type	roll	37.	Reducer, 1" x 3/4"	ea
9.	Gas, raw	gal	38.	Gated "Y", 1 1/2"	ea
10.	Bar Oil	gal	39.	Gated "Y", 1"	ea
11.	2- cycle oil, chainsaw (2.5 oz)	6 pk	40.	Gated "Y" 3/4 "	ea
12.	Sleeping Bags	ea	41.	Shut-off Valve, "	ea
13.	Gatorade	cs	42.	In-line Tee, 1 1/2" x 1"	ea
14.	Tarps / Plastic	roll	43.	Nozzle, 1 1/2"	ea
15.	Parachute Cord	roll	44.	Nozzle, 1"	ea
16.	Tool, Shovel	ea	45.	Nozzle, 3/4"	ea
17.	Too I, Pulaski	ea	46.	20 Man First Aid Kit	ea
18.	Tool, Combi	ea	47.	Chainsaw Kit	ea
19.	Tool, McLeod	ea	48.	Toilet Paper (96 per case)	cs
20.	Tool, Specify Type	ea	49.	1000 ft. Hose Lay Kit	ea
21.	Fusee	cs	50.	Garbage Bags	bx
22.	Drip Torch	ea	51.	Leadline	ea
23.	Drip Torch Mix, 5 gal.	ea	52.	Spike Supply Kit	ea
24.	Coffee Kit w/propane	ea	53.	Dolmar (6 per case)	ea
25.	Swivel	ea	54.	Sprinkler Kit	ea
26.	Backpack Pump	ea	55.	LINE Spike Supply Kit	ea
27.	Pumpkin, specify size	ea	56.	Duct Tape	roll
28.	Mark 3 Pump Kit w/fuel	ea	57.	House Wrap	roll
29.	2-cycle oil, high pressure pump	qt	58.	Staple Gun w/ staples	ea



**Team Ordering/Timeline Process:**

0630 - Morning Briefing, start of crew time.  
 1100 - Last call to change spike camp resource hot food location.  
 1600 - *DIVS* to have next day's resource order ready for Planning OPS.

- All crew level orders will be placed through *DIVS* or Branch.
- *DIVS* or Branch will place all orders through Communications Unit.
- All orders will be tracked using the process found on the front of this form.

**GPS Datum: NAD 83- Degrees, Decimal, Minutes (DDMM.MM)**

**Definitions**

**FOB**-Forward Operating Base is a secure forward position established to strategize, design and discuss tactics, and for personnel to transfer information and meet.

**Line Spike Camp**-Managed by Operations at the *DIVS* level; mobile, short duration and self- sufficient.

**Spike Camp**-Supported by Logistics, listed in the IAP, numbers in camp are set by 1100, named by Plans.

**Emergency Medevac**- Life threatening situation requiring immediate medical attention. Handled as per IAP med plan and team SOP's. Communications to clear command channel radio traffic.

**Medical Transport**-Transport of less serious injury/illness managed by Operations or line Medics back to camp for evaluation and/or treatment.

1000 ft. Hose Lay Kit (Order as "#49")				Spike Supply Kit (Order as "#52")			
Quantity	NFES#	Item	Weight	Quantity	NFES#	Item	Weight
10 ea	1239	Hose 1½"	125 lbs	2 rolls	0071	Duct Tape	4 lbs
10 ea	1238	Hose 1"	84 lbs	4 rolls	0222	Fiber Tape	2lbs
20 ea	1016	Hose ¾"	25 lbs	1 case	0021	Trash Bags	21 lbs
5 ea	0231	1½" Gated "Y"	20 lbs	1 case	0465	Cups for hot liquid	18 lbs
5 ea	0259	1" Gated "Y"	13 lbs	2 ea	0070	16x24 Tent fly	40 lbs
10 ea	0904	¾" Gated "Y"	3 lbs	3 ea	0027	Water Wash Basins	2 lbs
5 ea	0010	Reducers 1½" - 1"	3 lbs	1 case		Liquid Hand Soap / pump	10 lbs
5 ea	0733	Reducers 1" - ¾"	2 lbs	18 cases	1842	MRE's	18 x 20= 360 lbs
10 ea	0738 or 0835	Ball Valve ¾"	5 lbs	48 ea	0022	Sleeping bags (dbl. bag)	48 x 5= 240 lbs
10 ea	0138	Nozzle, 1"	5 lbs	3 cases	0030	AA Batteries, 24 pkg./case	90 lbs
10 ea	0136	Nozzle ¾"	5 lbs	1case	0240	Paper Towels	41 lbs
5 ea	0230	Tee 1½x1½x1"/valve	5 lbs	1 case	0142	Toilet Paper	44 lbs
LINE Spike Supply Kit (Order as "#55")				1 roll	0144	Plastic sheeting	45 lbs
				1 roll	0533	P-Cord	9 lbs
Quantity	NFES#	Item	Weight	20 ea	7443	Cubies, 5 gal. Full Potable Water	20 x 40= 800 lbs
20+0H	0022	Sleeping bags	20 x 5= 100 lbs	1 box	1059	12" Bastard Files	9lbs
20 ea	7443	Cubies, 5 gal Full	20x40= 800 lbs	1 ea	3444	2-cycle mix, chainsaw (6 pk 2.5 oz)	2lbs
18 cases	1842	MRE's	18x20=360 lbs	8 gal	1880	Bar Oil	64 lbs
1 sl	0533	P-Cord	9 lbs	15 gal		Regular Gas	120 lbs
3 cases	0030	AA Batteries, 24 pkg./case	90 lbs	1 can		3 lbs. can coffee	3 lbs
1 case	0021	Trash bags	21 lbs	1 ea		2 1/2 gal coffee pot or 3-1 gal	10 lbs
10 rolls	0142	Toilet paper	3 lbs	2ea	0089	Ridge pole	46 lbs
1 roll	0144	Plastic sheeting	45 lbs	12 ea	0083	Pole upright	89 lbs
2 rolls	0222	Fiber Tape	2 lbs	24 ea	0825	Stake Tent	24 lbs
1 ea	3444	2-cycle mix, chain-saw (6 pk 2.5 oz)	2 lbs				
4 gal	1880	Bar Oil	32 lbs				
15 gal		Regular Gas	120 lbs				
1 box	1059	12" Bastard Files	9 lbs				







# INFECTION CONTROL PROCEDURES

## ROCKY MOUNTAIN INCIDENT MANAGEMENT

Facial coverings/masks are **MANDATORY**  
in the Incident Command Post

### DAILY SAFETY & HYGIENE

- FREQUENTLY WASH HANDS WITH SOAP & WATER
- Regularly use hand sanitizer
- Physical distance (6 feet apart) whenever possible
- Facial coverings/masks are recommended indoors & when physical distancing is not possible

### DAILY HEALTH SCREENING - REQUIRED PRIOR TO EVERY SHIFT



### SIGNS & SYMPTOMS OF ILLNESS

- |                                    |                        |
|------------------------------------|------------------------|
| - TEMPERATURE ABOVE 100°F (38°C)   | - HEADACHE             |
| - NEW ONSET LOSS OF TASTE OR SMELL | - ABDOMINAL DISCOMFORT |
| - FATIGUE- MUSCLE ACHES            | - COUGH                |
| - SORE THROAT                      | - CHILLS               |
| - SHORTNESS OF BREATH              | - DIFFICULTY BREATHING |
| - VOMITING                         | - DIARRHEA             |

### — PERSONNEL WITH ILLNESS PROCEDURE —

- HAVE INDIVIDUAL DON A MASK OR AVAILABLE FACIAL COVERING **IMMEDIATELY**
- ISOLATE INDIVIDUAL FROM OTHERS (6 FEET MINIMUM)
- CONTACT THE FIREFIGHTER HEALTH COORDINATOR IMMEDIATELY
- HAVE ASSOCIATED CREW MEMBERS & OTHERS IN CONTACT DON A MASK OR AVAILABLE FACIAL COVERING
- TREAT LIFE THREATENING ISSUES OR COMPLAINTS AS APPROPRIATE
- REMAIN AT LOCATION AND WAIT FOR MEDICAL PERSONNEL



# MEDICAL PLAN (ICS 206WF)

ROCKY MOUNTAIN INCIDENT MANAGEMENT

<b>1. Incident/Project Name</b>	<b>2. Operational Period</b>
<b>Sugarloaf Fire</b>	<b>07/31/2022 0700-1900</b>

<b>3. Ambulance Services</b>			
Name	Location	Phone/Frequency	Advanced Life Support (ALS) Yes No
Laramie Fire	Laramie, WY	307-721-5332	X

<b>4. AIR AMBULANCE SERVICES</b>		
Name	Phone/Freq	Type of Aircraft & Capability
Wyoming Life Flight – Casper	800-806-9158	Bell 407 - Night Vision, Blood - Tail # N941AM
LifeLine 3 - Cheyenne	844-867-4590	A-Star B3 - Night Vision, Blood - Tail # N934EM
Classic Air Medical - Rawlins	800-444-9223	Bell 407 - Night Vision, Blood - Tail # N7160V
Wyoming National Guard	Order Through Air Ops	UH-60 Black Hawk - Night Vision, HOIST – Tail # Grit24

<b>5. Hospitals</b>								
Name Complete Address	GPS DATUM - WGS 84 DD° Degrees Decimal Minutes		Travel Time		Phone	Helipad		Level of Care Facility
	Lat:	Long:	GND	AIR		Yes	No	
Wyoming Medical Center 1233 E. 2 <sup>nd</sup> Street Casper, WY 82601	42° 50.8546' N	106° 18.4908' W	2.75 hr*	25 min*	307-742-2141	X		Level 2 Trauma Center
Cheyenne Regional 214 E. 23 <sup>rd</sup> St. Cheyenne, WY 82001	41° 8.4425' N	104° 48.9874' W	3.25 hr*	45 min*	307-634-2273	X		Level 3
Medical Center of the Rockies 2500 Rocky Mountain Dr. Loveland, CO	40° 24.9720' N	104° 59.8171' W	3.75 hr*	55 min*	970-624-1630	X		Level 1 Trauma Center
University of Colorado Hospital 12065 E. 16 <sup>th</sup> Ave. Aurora, CO 80045	39° 44.5343' N	104° 50.5461' W	4.5 hr*	80 min*	720-848-5120	X		Level 1 Trauma Center Burn Center

\*Travel times are from center of fire to the facility and DO NOT include response time to the incident.

<b>6. Division   Branch   Group</b>		
<b>DIV A</b>	EMS Responders & Capability:	EMT 1 - Luanne Baumann, EMTF MEDIC TEAM 21 – Emergency Response Logistics AMB 31 – Grand Ave Ambulance
	Equipment Available on Scene:	ALS Kit, BLS Kit, Cardiac Monitor, AED, ACLS, UTV
	Medical Emergency Channel:	National Forest through Casper Dispatch
<b>DIV Z</b>	EMS Responders & Capability:	EMT 2 - Mary Pimm, EMTF EMT 3 - Andrew Gilsdorf, EMTF REMS 41 – Remote Access Medical AMB 32 – Emergency Response Logistics
	Equipment Available on Scene:	ALS Kit, BLS Kit, Cardiac Monitor, AED, ACLS, UTV, Litter, Rope Rescue, Vehicle Extrication
	Medical Emergency Channel:	National Forest through Casper Dispatch
<b>STRUCTURE</b>	EMS Responders & Capability:	Use DIV A resources
	Equipment Available on Scene:	ALS Kit, Cardiac Monitor, ACLS
	Medical Emergency Channel:	National Forest through Casper Dispatch
<b>CONTINGENCY</b>	EMS Responders & Capability:	Use DIV A resources Order Helicopter resources early.
	Equipment Available on Scene:	ALS Kit, Cardiac Monitor, ACLS
	Medical Emergency Channel:	National Forest through Casper Dispatch
<b>FOB</b>	EMS Responders & Capability:	Medical Support Unit – Emergency Response Logistics
	Equipment Available on Scene:	ALS Kit, Cardiac Monitor, ACLS
	Medical Emergency Channel:	National Forest through Casper Dispatch
<b>ICP</b>	EMS Responders & Capability:	MEDL – Jeff Basamanowicz, EMPF
	Equipment Available on Scene:	ALS Kit, Cardiac Monitor, ACLS
	Medical Emergency Channel:	National Forest through Casper Dispatch

<b>7. Prepared By (Medical Unit Leader)</b>	<b>8. Date/Time</b>	<b>9. Reviewed By (Safety Officer)</b>	<b>10. Date/Time</b>
<b>Jeff Basamanowicz, MEDL</b>	<b>07/30/2022 (2000)</b>	<b>Pat Medina, SOF2</b>	<b>07/30/2022 (2000)</b>





# MEDICAL INCIDENT REPORT (8 LINE)

## ROCKY MOUNTAIN INCIDENT MANAGEMENT

### Medical Incident Report

#### FOR A NON-EMERGENCY NON-TRANSPORT INCIDENT:

Work through chain of command to report injured personnel to the Medical Unit Leader (MEDL).

#### FOR A MEDICAL EMERGENCY:

Identify on-scene incident commander by name and position.

Announce **"MEDICAL EMERGENCY"** to initiate response from IMT communications / dispatch.

#### USE THE FOLLOWING ITEMS TO COMMUNICATE THE SITUATION TO COMMUNICATIONS / DISPATCH

**1. CONTACT COMMUNICATIONS / DISPATCH** (Verify correct frequency prior to starting report)

Ex: "Communications, Div. Alpha. Stand-by for Emergency Traffic."

**2. INCIDENT STATUS:** Provide incident summary (including number of patients) and command structure.

Ex: "Communications, I have a Red priority patient, unconscious, struck by a falling tree. Requesting air ambulance to Forest Road 1 at (Lat./Long.) This will be Trout Meadow Medical, IC is TFLD Jones. EMT Smith is providing medical care."

Severity of Emergency / Transport Priority	<input type="checkbox"/> <b>RED / PRIORITY 1 - Life or Limb Threatening Injury or Illness. Evacuation Need Is IMMEDIATE</b> <i>Ex: Unconscious, difficulty breathing, bleeding severely, 2°- 3° burns more than 4 palm sizes, heat stroke, disoriented</i>	
	<input type="checkbox"/> <b>YELLOW / PRIORITY 2 - Serious Injury or Illness. Evacuation May Be DELAYED If Necessary</b> <i>Ex: Significant trauma, unable to walk, 2°- 3° burns not more than 1-3 palm sizes</i>	
	<input type="checkbox"/> <b>GREEN / PRIORITY 3 - Minor Injury or Illness. Non-Emergency Transport</b> <i>Ex: Sprains, strains, minor heat-related illness</i>	
Nature of Injury or Illness & Mechanism of Injury		Brief Summary of Injury or Illness (Ex: Unconscious, Struck by Falling Tree)
Transport Request		Air Ambulance, Short Haul/Hoist Ground Ambulance, Other
Patient Location		Descriptive Location & Lat. / Long. (WGS84)
Incident Name		Geographic Name + "Medical" (Ex: Trout Meadow Medical)
On-Scene Incident Commander		Name of On-Scene IC of Incident Within an Incident (Ex: TFLD Jones)
Patient Care		Name of Care Provider (Ex: EMT Smith)

**3. INITIAL PATIENT ASSESSMENT:** Complete this section for each patient as applicable (start with the most severe patient)

Patient Assessment: See IRPG PAGE 106

Treatment:

**4. TRANSPORT PLAN:**

Evacuation Location (if different): (Descriptive Location (drop point, intersection, etc.) or Lat. / Long.) Patient's ETA to Evacuation Location:

Helispot / Extraction Site Size and Hazards:

**5. ADDITIONAL RESOURCES / EQUIPMENT NEEDS:**

Example: Paramedic/EMT, Crews, Immobilization Devices, AED, Oxygen, Trauma Bag, IV/Fluid, Splints, Rope Rescue, Wheeled Litter, HAZMAT, Extrication:

**6. COMMUNICATIONS:** Identify State Air / Ground EMS Frequencies and Hospital Contacts as Applicable

Function	Channel Name/Number	Receive (RX)	Tone/NAC *	Transmit (TX)	Tone / NAC *
COMMAND					
AIR-TO-GRND					
TACTICAL					

**7. CONTINGENCY:** Considerations: If primary options fail, what actions can be implemented in conjunction with primary evacuation method? Be thinking ahead!

**8. ADDITIONAL INFORMATION:** Updates/Changes, etc...

**REMEMBER: Confirm ETAs of Resources - Act According To Your Level of Training - Be Alert. Keep Calm - Think Clearly - Act Decisively**