

Operations

Washakie Park

WY-WRA-000353

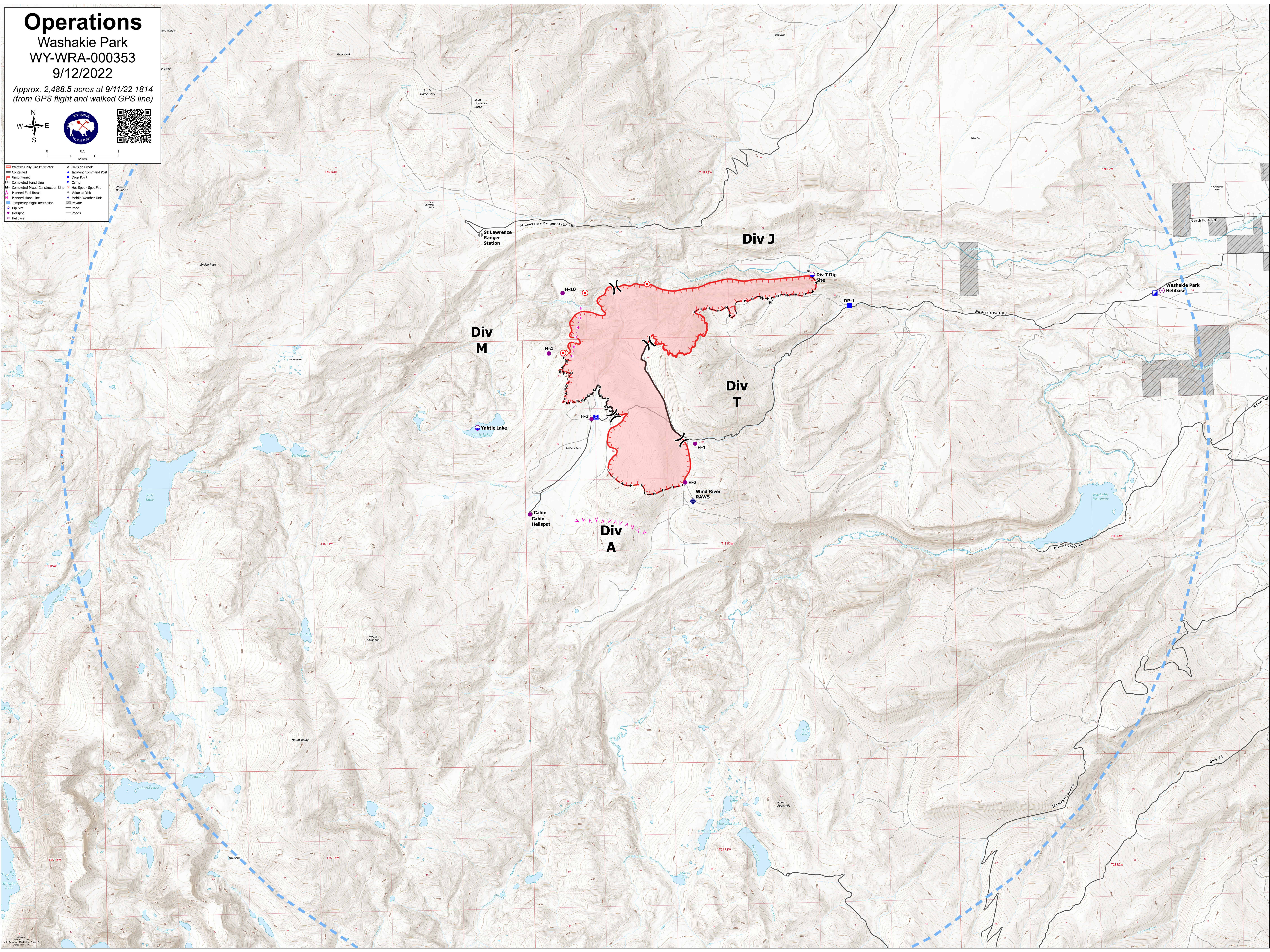
9/12/2022

Approx. 2,488.5 acres at 9/11/22 1814
(from GPS flight and walked GPS line)



0 0.5 1
Miles

- | | | | |
|-------------------|-----------------------------------|-------------|-----------------------|
| Red dashed line | Wildfire Daily Fire Perimeter | Black line | Division Break |
| Red solid line | Contained | Blue square | Incident Command Post |
| Black dashed line | Uncountained | Blue circle | Drop Point |
| Black solid line | Completed Hand Line | Blue square | Camp |
| Black dashed line | Completed Mixed Construction Line | Red circle | Hot Spot - Spot Fire |
| Black solid line | Planned Fuel Break | Blue circle | Value at Risk |
| Black solid line | Planned Hand Line | Blue circle | Mobile Weather Unit |
| Blue dashed line | Temporary Flight Restriction | Blue circle | Private |
| Blue solid line | Drop Site | Blue circle | Road |
| Red circle | Helispot | Black line | Road |
| Red circle | Helibase | | |



© 2022 Wyoming State Fire Marshal
North American 100 USNG Zone 12N
Projection: UTM