

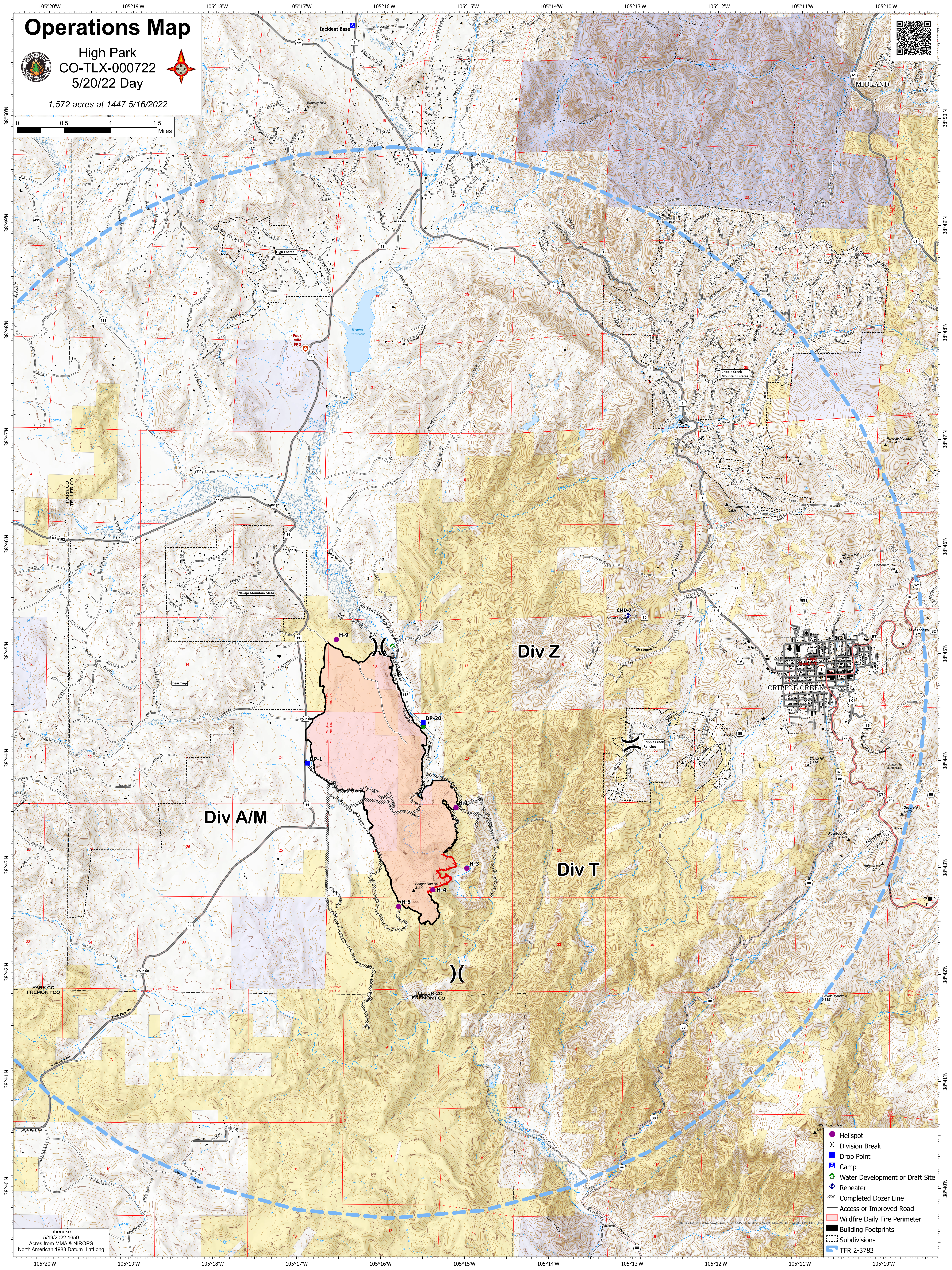
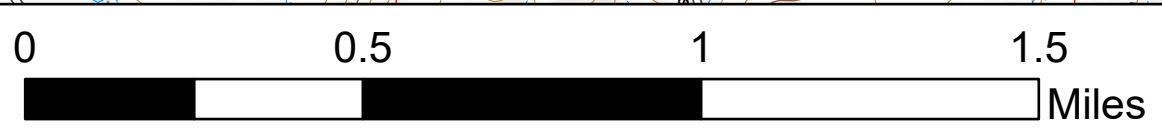
# Operations Map



High Park  
CO-TLX-000722  
5/20/22 Day



1,572 acres at 1447 5/16/2022



Div A/M

Div Z

Div T

CRIPPLE CREEK

Four Mile Fire

Incident Base

- Helispot
- ⌋ Division Break
- Drop Point
- ▲ Camp
- ⊕ Water Development or Draft Site
- ⬢ Repeater
- ⊞ Completed Dozer Line
- Access or Improved Road
- ▭ Wildfire Daily Fire Perimeter
- ▭ Building Footprints
- ⋯ Subdivisions
- ⬢ TFR 2-3783

nbencke  
5/19/2022 1659  
Acres from MMA & NIROPS  
North American 1983 Datum. Lat/Long