

ROAD 702 FIRE

NE-NES-220221 - PN PK5W (1522)[P]

THURSDAY, APRIL 28, 2022

Operational Period 0700 - 0700



Rocky Mountain CIMT1

Dan Dallas, IC

Mark Giacoletto, Deputy

INCIDENT INFORMATION: 402.327.1511

MORNING BRIEFING: 202.650.0123 – Conference ID: 553 225 965#

EMAIL CTRs (Pictures OK) to 2022.NEBRASKASPRING.FINANCE@FIRENET.GOV

EMAIL DOCUMENTATION (Pictures OK) to 2022.NEBRASKASPRING.DOCS@FIRENET.GOV

IAP




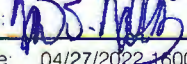
MAPS



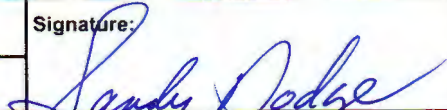
CHECK-IN



INCIDENT OBJECTIVES (ICS 202)

1. Incident Name:		2. Operational Period:	
ROAD 702 FIRE		Date/Time From: 04/28/2022 0700 THU	Date/Time To: 04/29/2022 0700 FRI
3. Objective(s):			
<ol style="list-style-type: none"> 1. No loss of life or serious injury to the public or firefighters. 2. Eliminate the threat to surrounding communities, including Cambridge, Wilsonville, Lebanon, Bartley, and Indianola, private land and facilities, communication, transportation, and utility infrastructure. 3. Minimize impacts to agricultural values including livestock feeding operations, croplands, rangelands, and related infrastructure. 4. Provide timely information to all agencies, media, the public, partners, cooperators, local government, law enforcement, and landowners. 5. Maintain and enhance relationships with adjoining agencies, cooperators, stakeholders, permittees, and local communities. 6. Minimize occurrence and spread of COVID-19 and other infectious diseases. 			
4. Operational Period Command Emphasis:			
<ol style="list-style-type: none"> 1. Manage risk to firefighters by ensuring hazards are identified, assessed, and where possible mitigated. Be prepared to accept residual risk when values threatened warrant it and the probability of achieving objectives is high. 2. Utilize strategies and tactics that commit responders only to operations where and when they can be successful, and under conditions where important values at risk are protected with the least exposure necessary. 3. Coordinate and communicate with displaced residents, local cooperators, stakeholders, and media regarding the fire situation and repopulation using media, press releases, social media, and personal contacts. 4. Contain and control portions of the fire that are a threat to identified values to be protected. 5. Mop-up to the extent necessary to prevent escape of the fire to prevent additional spread or damage to other values within the perimeter. 6. Implement practices that reduce the potential for spread of COVID-19 and other infectious diseases, such as distributive operations, adhering to direction provided by health officials regarding COVID-19 mitigations, and other appropriate actions that improve the health environment for firefighters and support personnel. 			
General Situational Awareness:			
<ol style="list-style-type: none"> 1. Prevent transmission of infectious disease by practicing good personal hygiene and following COVID protocols . 2. Complete a good size up of your work area in order to mitigate hazards. 3. Be prepared for changing weather conditions. Blowing ash and dust may create limited visibility. 4. Stay alert for public in the fire area . 			
5. Site Safety Plan Required? Yes <input type="checkbox"/> No <input checked="" type="checkbox"/>			
Approved Site Safety Plan(s) Located			
6. Incident Action Plan (the items checked below are included in this Incident Action Plan):			
<input checked="" type="checkbox"/> ICS 202	<input type="checkbox"/> ICS 207	Other Attachments:	
<input checked="" type="checkbox"/> ICS 203	<input checked="" type="checkbox"/> ICS 208	<input checked="" type="checkbox"/> CHECK-IN/DEMOB TIPS	
<input checked="" type="checkbox"/> ICS 204	<input checked="" type="checkbox"/> ICS 220	<input checked="" type="checkbox"/> LOGISTICS MESSAGE	
<input checked="" type="checkbox"/> ICS 205	<input checked="" type="checkbox"/> Map/Chart	<input checked="" type="checkbox"/> INFORMATION MESSAGE	
<input type="checkbox"/> ICS 205A	<input checked="" type="checkbox"/> Weather Forecast/Tides/Currents	<input checked="" type="checkbox"/> SAW PARTS REQUEST	
<input checked="" type="checkbox"/> ICS 206			
7. Prepared by: AUSTIN BAKER	Position/Title: PSC1	Signature: 	
8. Approved by Incident Commander:		Signature: 	
ICS 202	IAP Page	Date/Time: 04/27/2022 1600	

ORGANIZATION ASSIGNMENT LIST (ICS 203)

1. Incident Name:		2. Operational Period:	
ROAD 702 FIRE		Date/Time From: 04/28/2022 0700	Date/Time To: 04/29/2022 0700
		THU	FRI
3. Incident Commander(s) and Command Staff:		7. Operations Section:	
IC/UC	DAN DALLAS	FIELD OPS	TRAVIS LIPP
DEPUTY	MARK GIACOLETTO	PLANNING OPS	ROB POWELL
SAFETY OFFICER	JON BLACKSTONE TODD LEGLER	PLANNING OPS	MATT HOLTE (T)
MEDICAL UNIT	GREG BERGIN KIRBY CLOCK	Branch I	
INFECTIOUS DISEASE SPECIALIST	SUSAN KOLP	BRANCH DIRECTOR	SCOTT BEACHAM
INFORMATION OFFICER	BRENDA BOWEN MICHELLE EHN KELLY	DIVISION/GROUP	A/B SAGE DECKER GREG GILBERT (T)
LIAISON OFFICER	TAMERA RANDALL-PARKER; ADAM SMITH (T)	Branch III	
4. Agency/Organization Representative(s):		BRANCH DIRECTOR	TIM DALY
Agency/Organization	Name	DIVISION/GROUP	Y CODY ROSE JESSE SLOAN (T)
NFS	MATT HOLTE	DIVISION/GROUP	Z ANDY LIPP
NE SFMO	ALLEN MICHEL	DIVISION/GROUP	NIGHT SKIP SIMMONS
NEMA	EARL IMLER	7b. Air Operations Branch:	
NEMA PIO	JODIE FAWL	AIR OPS BRANCH DIRECTOR	KELLY RUDGER
NEMA PUBLIC ASSISTANCE	PATRICK CONWAY; BECCA BLIZZARD MARISA ALVARES	8. Finance/Administration Section:	
NFS PIO	BEN BOHALL	CHIEF	DAVID LUCAS PJ TILLMAN
KSFS	RODNEY REDINGER	TIME UNIT	
5. Planning Section:		PROCUREMENT UNIT	BRIAN MCCABE (V)
CHIEF	AMY HAM AUSTIN BAKER	COMPENSATION UNIT	
RESOURCES UNIT	TERI PARVIN; SANDY DODGE GWEN TALLMADGE (T)	COST UNIT	KATHY SUTPHEN MICHAEL JACOBS (T)
SITUATION UNIT	NATE WILLIAMSON		
DEMOBILIZATION UNIT	GAYLE LAURENT		
FIRE BEHAVIOR ANALYST	GLEN LEWIS		
GIS SPECIALIST	JENNIFER AVESING TONY SMITH, JOHN GUINOTTE		
INCIDENT METEOROLOGIST	SHANE EAGAN		
6. Logistics Section:			
CHIEF	BRENT SPENCER; MIKE BOURNAZIAN KEITH PLAGEMANN		
SUPPLY UNIT	ROY SPENCER		
FACILITIES UNIT	JASON GROSS CLIFF PIPER		
COMMUNICATIONS UNIT	KEVIN ZURFLUH		
SECURITY UNIT	DAVE CLARK		
ORDERING	MARIE BUTLER		
9. Prepared By:		Position/Title:	Signature:
Name: SANDY DODGE		RESL	
ICS 203	IAP Page	Date/Time: 04/27/2022 2000	



Fire Weather Forecast

THURSDAY, APRIL 28, 2022



FORECAST NO: 04
PREDICTION FOR: Thursday, Apr 28, 2022
ISSUED: 2000, Apr 27, 2022

NAME OF FIRE: ROAD 702 FIRE
UNIT: States of Nebraska/Kansas
SIGNED: *Shane Eagan* Shane Eagan, IMET

DISCUSSION: Warm and breezy today, although increased moisture will yield higher daytime relative humidity. There is slight chance of thunderstorms by early evening and again early Friday morning as a low pressure system develops over the area. Chances increase for a wetting rain across the fire area Friday into Friday night, although highest precipitation amounts will remain north and east. Given the threat of thunderstorms, precipitation is likely to be highly variable from the fire area southward. Winds will shift northwesterly Friday afternoon behind the front and will increase through the night - gusts up to 40-50 mph are likely through Saturday. Sunday looks to be another elevated fire weather day with gusty northwest winds and RH into the upper 20s. Cooler and active pattern expected next week, with additional chances of precipitation.

THURSDAY:

SKY/WEATHER: Partly cloudy and warm. Slight chance (~20%) of an isolated thunderstorm after 1700.
WIND (20 FT): SW becoming SE after 1200. Sustained 6-13 mph, occasional gusts to 15-28 mph during the afternoon.
MAX TEMP: 80-83F (24hr trend: Up 2-3F). **MIN RH:** 28-35% (24hr trend: Up 12-16%).
HAINES: 5 **LAL:** 2 **CWR (>.1"):** 10%
INVERSION: Mixing height increases to 7500-8500 feet by 1600.

THURSDAY NIGHT:

SKY/WEATHER: Partly cloudy. Slight chance (~15%) of isolated showers and thunderstorms through 2200, increasing chances after 0200 through Friday morning (25%).
WIND (20 FT): SE 8-15, occasional gusts 16-20 mph.
MIN TEMP: 52-55F (24hr trend: Up 2-5F). **MAX RH:** 90-95% (24hr trend: Up 5-8%).
LAL: 2 **CWR (>.10"):** 15%
INVERSION: No surface inversion; inversion begins ~1200-1500 feet.

FRIDAY: **WIND SHIFT SOUTHEAST → NORTHWEST**

SKY/WEATHER: Partly cloudy. Showers and thunderstorms possible in the morning with additional chances during the afternoon/evening. A severe storm is possible.
WIND (20 FT): SE becoming NW after 1200. Sustained 10-20 mph, gusts to 25-35 mph during the afternoon. Winds increase after 2300, sustained 20-30 mph, gusts 30-40 mph overnight.
MAX TEMP: 75-79F (24hr trend: Down ~2-5F). **MIN RH:** 40-45% (24hr trend: Up 8-10%).
HAINES: 4 **LAL:** 4 **CWR (>.1"):** 60%
INVERSION: Mixing height increases to 5500-6500 feet by 1500.

Extended outlook: Saturday: Partly cloudy with a slight chance of showers and storms (~15%). Highs in the low 60s. Min RH: 32-38%. NW winds 25-35, gusting to 40 to 50 mph. **Sunday:** Partly cloudy. Highs in the upper 60s. Min RH: 22-30%. NW winds shifting NE 10-15, gusts 15-25 mph. **Monday:** Mostly cloudy with a chance of showers and storms. Highs in the upper 50s to low 60s. Min RH: 45-52%. E winds 12-16, gusts 18-26 mph.

FIRE BEHAVIOR FORECAST

Incident Name	Road 702	Forecast Number	05
Operational Period	4/28/2022 Day/Night	Date/Time Issued	07/27/2022 2000
Unit	Nebraska/Kansas State	Forecast by (Name & Position)	Glen Lewis FBAN

Inputs

General

Fuels in the fire area are primarily composed of grass, harvested agricultural land, and stringers of hardwoods mixed with juniper in the draw bottoms. ***A Fuels and Fire Behavior Alert has been issued for the fire area. Critically dry conditions and delayed green up have created a volatile landscape for extreme fire behavior in portions of central Kansas and Nebraska.*** Extremely dry surface and live fuels are common and will likely contribute to high rates of spread where green-up has not occurred. Local fire danger indices are ***above the 97th percentile.***

Watch for fuels changes and wind gusts that will substantially increase fire behavior.

Outputs

GENERAL:

- Very dry conditions will continue into today. All fuel types are fully available, even sparse fuels and agricultural land.
- Active fire behavior expected in all areas where fire has established, short range spotting possible.
- Probability of ignition is high. Expect short-range spotting and moderate fire spread due to lower windspeeds.
- If enough dead fuels are present, higher winds and low humidity may cause fire to spread though fuels that look “green”.

Specific fire behavior:

	10 MPH SUSTAINED WIND	20 MPH WIND GUST
1 ft tall grass	.5-.75 MPH	1-1.5 MPH
2 ft tall grass	1 MPH	2.5 MPH
Hardwood Draws	.25 MPH	.6 MPH
Harvested Ag Land	.3 MPH	.8 MPH

Short range spotting will increase fire spread from above rates

NIGHT –Higher humidity recovery with lighter winds tonight will lead to a shorter active burning period. Expect potential fire behavior to drop significantly after 2400 hours Spotting potential will be low after midnight.

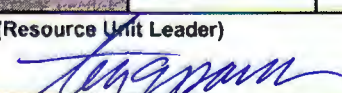
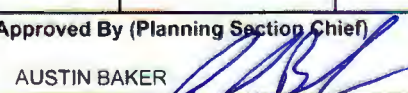
SAFETY:

Do not let your guard down with higher humidity. Even under moderate humidity very high rates of spread in localized locations are possible if passing storms have strong outflow winds.

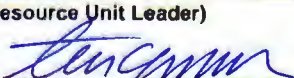

Division/Group Assignment List (ICS 204 WF)
Controlled Unclassified Information//Basic

1. Incident Name:		3				
ROAD 702 FIRE		Branch:	Division/Group			
2. Operational Period:		I	A/B			
Date/Time From: 04/28/2022 0700 THU	Date/Time To: 04/29/2022 0700 FRI					
4. Operations Personnel						
FIELD OPERATIONS	TRAVIS LIPP	PLANNING OPERATIONS	ROB POWELL MATT HOLTE (T)			
BRANCH DIRECTOR	SCOTT BEACHAM	DIVISION/GROUP SUPERVISOR	SAGE DECKER; GREG GILBERT (T)			
AIR ATTACK SUPERVISOR	JACK MARVIN					
5. Resources Assigned this Period						
Strike Team / Task Force / Resource Designator	LWD	Leader	Number Persons	Drop Off PT./Time	Pick Up PT./Time	
NATIONAL GUARD TASK FORCE	05/07	JOSH MILLER	16	CAMBRIDGE FOB/0700	CAMBRIDGE FOB/1900	
E-4 ENG3 ELK CREEK 433	05/08	PAUL SCOTT	3	CAMBRIDGE FOB/0700	CAMBRIDGE FOB/1900	
E-16 ENG6 NORTH METRO	05/08	CRAIG TALBOT	3	CAMBRIDGE FOB/0700	CAMBRIDGE FOB/1900	
E-19 ENG6 CIMARRON HILLS 1340	05/09	ALEXANDER FARR	3	CAMBRIDGE FOB/0700	CAMBRIDGE FOB/1900	
E-21 ENG6 MOORES FIRE CAT	05/08	SCOTT BLACKCROW	2	CAMBRIDGE FOB/0700	CAMBRIDGE FOB/1900	
E-69 ENG6 WY-CPS 63	05/08	GARY HOBBS	3	CAMBRIDGE FOB/0700	CAMBRIDGE FOB/1900	
DOZER EVANS CONSTRUCTION	05/07	JOSH EVANS	1	CAMBRIDGE FOB/0700	CAMBRIDGE FOB/1900	
O-26 EMTF	05/08	KRISTINA MAVENCAMP	1	CAMBRIDGE FOB/0700	CAMBRIDGE FOB/1900	
6. Control Operations/Work Assignments:						
TASK: Patrol and secure fireline.						
PURPOSE: Prevent loss or damage to private property and structures.						
END STATE: The fire cannot threaten any values at risk.						
7. Special Instructions:						
8. Division/Group Communication Summary						
Function	Channel	RX Frequency N/W	RX Tone/NAC	TX Frequency N/W	TX Tone/NAC	Mode
COMMAND	SEE COMM PLAN					
9. Prepared By (Resource Unit Leader)		Approved By (Planning Section Chief)		Date	Time	
SANDY DODGE <i>Sandy Dodge</i>		AUSTIN BAKER <i>AB</i>		04/27/2022	2000	

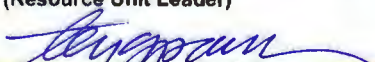

Division/Group Assignment List (ICS 204 WF)
Controlled Unclassified Information//Basic

1. Incident Name:		3.				
ROAD 702 FIRE		Branch:		Division/Group		
2. Operational Period:		III		Y		
Date/Time From: 04/28/2022 0700 THU	Date/Time To: 04/29/2022 0700 FRI					
4. Operations Personnel						
FIELD OPERATIONS		TRAVIS LIPP		PLANNING OPERATIONS		ROB POWELL MATT HOLTE (T)
BRANCH DIRECTOR		TIM DALY		DIVISION/GROUP SUPERVISOR		CODY ROSE JESSE SLOAN (T)
AIR ATTACK SUPERVISOR		JACK MARVIN				
5. Resources Assigned this Period						
Strike Team / Task Force / Resource Designator		LWD	Leader	Number Persons	Drop Off PT./Time	Pick Up PT./Time
O-46 TFLD		04/28	JEFF WIEDOW	1	CAMBRIDGE FOB/0700	CAMBRIDGE FOB/1900
E-6 ENG6 FAIRBURN BRUSH 20		04/28	SHANNON RITTBERGER	2	CAMBRIDGE FOB/0700	CAMBRIDGE FOB/1900
E-9 ENG6 SDS 654		04/28	QUENTIN CORDELL	3	CAMBRIDGE FOB/0700	CAMBRIDGE FOB/1900
E-10 ENG6 EDGEMONT 25		05/07	DUSTIN ALDRICH	3	CAMBRIDGE FOB/0700	CAMBRIDGE FOB/1900
* E-14 ENG6 RBR-6102		04/28	JOHN GRAHAM	2	CAMBRIDGE FOB/0700	CAMBRIDGE FOB/1900
E-28 WTT1 OAK CREEK		04/28	TIM HOHNBAUM	2	CAMBRIDGE FOB/0700	CAMBRIDGE FOB/1900
O-26 EMTF		05/08	KRISTINA MAVENCAMP	1	CAMBRIDGE FOB/0700	CAMBRIDGE FOB/1900
6. Control Operations/Work Assignments:						
TASK: Patrol and secure fireline. PURPOSE: Prevent loss or damage to private property and structures. END STATE: The fire cannot threaten any values at risk.						
7. Special Instructions:						
* Indicates IA Resource.						
8. Division/Group Communication Summary						
Function	Channel	RX Frequency N/W	RX Tone/NAC	TX Frequency N/W	TX Tone/NAC	Mode
COMMAND	SEE COMM PLAN					
9. Prepared By (Resource Unit Leader)		Approved By (Planning Section Chief)		Date	Time	
TERI PARVIN 		AUSTIN BAKER 		04/27/2022	2000	

Division/Group Assignment List (ICS 204 WF)
Controlled Unclassified Information//Basic

1. Incident Name:		3.				
ROAD 702 FIRE		Branch:		Division/Group		
2. Operational Period:		III		Z		
Date/Time From: 04/28/2022 0700	THU	Date/Time To: 04/29/2022 0700	FRI			
4. Operations Personnel						
FIELD OPERATIONS	TRAVIS LIPP	PLANNING OPERATIONS		ROB POWELL MATT HOLTE (T)		
BRANCH DIRECTOR	TIM DALY	DIVISION/GROUP SUPERVISOR		ANDY LIPP		
AIR ATTACK SUPERVISOR	JACK MARVIN					
5. Resources Assigned this Period						
Strike Team / Task Force / Resource Designator	LWD	Leader	Number Persons	Drop Off PT./Time	Pick Up PT./Time	
O-1.59 TFLD (T)	04/28	JON HILL	1	CAMBRIDGE FOB/0700	CAMBRIDGE FOB/1900	
C-6 HC2I PATRICK 18A	04/28	JOSH CHILES	20	CAMBRIDGE FOB/0700	CAMBRIDGE FOB/1900	
* E-1 ENG3 ALTERGOTT FORESTRY	05/08	ADAM ALTERGOTT	3	CAMBRIDGE FOB/0700	CAMBRIDGE FOB/1900	
E-3 ENG3 HUDSON FPD 2833	04/28	CODY PETERSON	3	CAMBRIDGE FOB/0700	CAMBRIDGE FOB/1900	
E-5 ENG3 FAIRMOUNT FPD 34	04/28	DARIUSZ PIWKO	3	CAMBRIDGE FOB/0700	CAMBRIDGE FOB/1900	
E-15 ENG6 AURORA BRUSH 1	04/28	KAYLA MCCARTHY	3	CAMBRIDGE FOB/0700	CAMBRIDGE FOB/1900	
E-17 ENG6 WY- 694	05/09	JOSHUA MCGEE	4	CAMBRIDGE FOB/0700	CAMBRIDGE FOB/1900	
E-18 ENG6 AURORA BRUSH 13	04/28	PATRICK MARTIN	4	CAMBRIDGE FOB/0700	CAMBRIDGE FOB/1900	
* E-20 ENG6 ALTERGOTT FORESTRY	05/08	BOB HARROLD	3	CAMBRIDGE FOB/0700	CAMBRIDGE FOB/1900	
E-23 ENG6 WY-LAX-GRASS 31	05/09	JOSHUA SKELTON	2	CAMBRIDGE FOB/0700	CAMBRIDGE FOB/1900	
E-29 WTT1 WY-LAX- #3	04/30	TITUS NORRIS	2	CAMBRIDGE FOB/0700	CAMBRIDGE FOB/1900	
E-32 WTS1 HAYNES EXCAVATION	05/08	ZEB LEATHERMAN	1	CAMBRIDGE FOB/0700	CAMBRIDGE FOB/1900	
O-26 EMTF	05/08	KRISTINA MAVENCAMP	1	CAMBRIDGE FOB/0700	CAMBRIDGE FOB/1900	
6. Control Operations/Work Assignments:						
8. Division/Group Communication Summary						
Function	Channel	RX Frequency N/W	RX Tone/NAC	TX Frequency N/W	TX Tone/NAC	Mode
COMMAND	SEE COMM PLAN					
9. Prepared By (Resource Unit Leader)		Approved By (Planning Section Chief)		Date	Time	
TERI PARVIN 		AUSTIN BAKER 		04/27/2022	2000	

Division/Group Assignment List (ICS 204 WF)
Controlled Unclassified Information//Basic

1. Incident Name:		3				
ROAD 702 FIRE		Branch:		Division/Group		
2. Operational Period:		III		Z		
Date/Time From: 04/28/2022 0700 THU	Date/Time To: 04/29/2022 0700 FRI					
4. Operations Personnel						
FIELD OPERATIONS		TRAVIS LIPP		PLANNING OPERATIONS		ROB POWELL MATT HOLTE (T)
BRANCH DIRECTOR		TIM DALY		DIVISION/GROUP SUPERVISOR		ANDY LIPP
AIR ATTACK SUPERVISOR		JACK MARVIN				
6. Control Operations/Work Assignments:						
TASK: Patrol and secure fireline.						
PURPOSE: Prevent loss or damage to private property and structures.						
END STATE: The fire cannot threaten any values at risk.						
7. Special Instructions:						
* Indicates IA Resource.						
6. Division/Group Communication Summary						
Function	Channel	RX Frequency N/W	RX Tone/NAC	TX Frequency N/W	TX Tone/NAC	Mode
COMMAND	SEE COMM PLAN					
9. Prepared By (Resource Unit Leader)		Approved By (Planning Section Chief)		Date	Time	
TERI PARVIN 		AUSTIN BAKER 		04/27/2022	2000	

Division/Group Assignment List (ICS 204 WF)
 Controlled Unclassified Information//Basic

1. Incident Name:		3.				
ROAD 702 FIRE		Branch:	Division/Group NIGHT			
2. Operational Period:						
Date/Time From: 04/28/2022 0700	THU	Date/Time To: 04/29/2022 0700	FRI			
4. Operations Personnel						
DIVISION/GROUP SUPERVISOR	SKIP SIMMONS					
5. Resources Assigned this Period						
Strike Team / Task Force / Resource Designator	LWD	Leader	Number Persons	Drop Off PT./Time	Pick Up PT./Time	
E-2 ENG3 LITE EM UP	05/08	JT EVANS	3	CAMBRIDGE FOB/1800	CAMBRIDGE FOB/0600	
E-8 ENG6 SDS 621	05/08	RILEY STEVENS	3	CAMBRIDGE FOB/1800	CAMBRIDGE FOB/0600	
E-24 ENG6 YODER	05/08	CALEB ANDERSON	3	CAMBRIDGE FOB/1800	CAMBRIDGE FOB/0600	
E-73 ENG6 ENG6 - KS-JOX-BR56	04/28	MATT PARKER	3	CAMBRIDGE FOB/1800	CAMBRIDGE FOB/0600	
E-83 ENG6 KS-JOX-BR82	04/28	JOSH SHAW	3	CAMBRIDGE FOB/1800	CAMBRIDGE FOB/0600	
6. Control Operations/Work Assignments:						
TASK: Patrol and secure fireline. PURPOSE: Prevent loss or damage to private property and structures. END STATE: The fire cannot threaten any values at risk.						
7. Special Instructions:						
8. Division/Group Communication Summary						
Function	Channel	RX Frequency N/W	RX Tone/NAC	TX Frequency N/W	TX Tone/NAC	Mode
COMMAND	SEE COMM PLAN					
9. Prepared By (Resource Unit Leader)		Approved By (Planning Section Chief)		Date	Time	
SANDY DODGE <i>Sandy Dodge</i>		AUSTIN BAKER <i>Austin Baker</i>		04/27/2022	2000	

AIR OPERATIONS SUMMARY 220		Prepared By: Kelly Rudger	Prepared: 4/27/2022	Prepared Time: 1800		
1. INCIDENT NAME: ROAD 702 FIRE		2. OPERATIONAL PERIOD 4/28/2022	START TIME: 0700	END TIME: 2100	SUNRISE: 06:44	SUNSET: 20:35

3. REMARKS: (Safety Notes, Hazards, etc.) <p style="text-align: center;"><u>AVIATION SAFETY IS A TEAM EFFORT</u></p> <p style="text-align: center;"><u>AIR OPERATIONS INTENT</u></p> <p>ALL MISSIONS WILL BE ANALYZED IN TERMS OF HAZARDS AND RISKS</p> <ul style="list-style-type: none"> • THE RISK ASSESSMENT IS AN OPEN PROCESS WELCOMING INPUT. • HAZARDS WILL BE MITIGATED, RISK WILL BE REDUCED. • RISK MANAGEMENT PROCESS WILL BE DOCUMENTED AND DISPLAYED. <p>IF A MISSION FEELS UNSAFE, IDENTIFY SAFE ALTERNATIVES! ***Visibility and high winds, have been a safety issue.***</p>			4. READY ALERT AIRCRAFT: <p style="text-align: center;">IA: TBD</p> <p style="text-align: center;">Medivac: Air Ambulances & Life Flight Order Through Communications</p> <p style="text-align: center;">See Medical Plan in the IAP</p>		5. TFR:
--	--	--	--	--	----------------

6. PERSONNEL	NAME	PHONE #	7. FREQUENCIES	AM	FM	8A. FIXED-WING Ordering
AOBD	Kelly Rudger	503-341-7225				AIRTANKERS/LEAD PLANES/SEATS: ATGS order through Dispatch
			Nebraska A/A 1 Nebraska A/A 2	126.8250 128.7000		8B. Aerial Supervision / Personnel / Location AIR ATTACK Platforms: Order through Operations ATGS 44NC AC 690B (Jack Marvin) North Platte, NE
			Nebraska A/G 25 Nebraska A/G 05 Nebraska A/G 29		168.7500 166.7500 166.9000	
HMGB Nat Guard	Josh Miller	402-505-1157				
ATGS	Jack Marvin	520-508-7310	DECK		163.1000	
Great Plains Dispatch	AC Desk	605-399-3160				

9. HELICOPTERS: (Order through ATGS or Operations)

FAA N#	TY	MAKE/MODEL	BASE	START	AVAIL	REMARKS	FAA N#	TY	MAKE/MODEL	BASE	START	AVAIL	REMARKS
Guard 1	1	UH-60 Blackhawk	McCook	0900	1000	National Guard, Bucket	Guard 3	3	UH-72 Lakota	McCook	0900	1000	National Guard, Bucket
Guard 2	1	UH-60 Blackhawk	McCook	0900	1000	National Guard, Bucket							



10. TASK/ MISSION/ ASSIGNMENT (Type/ function includes: Air Tactical, Retardant, Recon, Personnel Transport, Bucket Operations, SAR, etc.)					
TYPE/FUNCTION	PRIORITY	NAME OF PERSONNEL OR CARGO (If applicable) or instructions for tactical aircraft	MISSION START	FLY FROM	FLY TO
ATGS		Provide coverage as smoke or weather permits.	0830	FBO	Fire
Initial Attack		Support Initial Attack actions as requested.	TBD	TBD	IA
Medevac		**See Medical Plan in IAP – Review during Division Breakouts**	TBD	TBD	Fire
Water Drops		As needed and approved by Ops.	0830	Helibase	Fire
PSD/UAS Operations		As approved in the PSD/UAS plan, where and when needed, determined by Ops.	TBD	TBD	Fire
Recon		Fire reconnaissance by Ops. Priority	0830	TBD	Fire

Incident Fire Costs:	Other Information:
<p>Send Helibase Cumulative Costs & Fixed Wing Costs to:</p> <p>krudger@blm.gov</p>	<p>For Incident Specific Information Go to the FTP Site: ftp.wildfire.gov</p>

Flights above ground level	Wind Restrictions		
	Flight Permitted in Winds Less than / Maximum Gust Spread		
	Type 1 Helicopters	Type 2 Helicopters	Type 3 Helicopters
More than 500' AGL	<50kts / Gusts: N/A	<50kts / Gusts: N/A	<50kts / Gusts: N/A
Less than 500' AGL	<40kts / Max Gust Spread: 15kts	<40kts / Max Gust Spread: 15kts	<30kts / Max Gust Spread: 15kts

Controlled Unclassified Information/Basic

Approved by: //s//: Kelly Rudger AOBD Rocky Mountain T1 Team

INCIDENT RADIO COMMUNICATIONS PLAN (ICS 205)

Controlled Unclassified Information//Basic

1. Incident Name:	2. Date/Time Prepared:	3. Operational Period:	
ROAD 702 FIRE	Date: 04/27/2022 Time: 2000	Date/Time From: 04/28/2022 0700 THU	Date/Time To: 04/29/2022 0700 FRI

4. Basic Radio Channel Use:

Zone Group	Ch #	Function	Channel Name/Trunked Radio System Talkgroup	Assignment	RX Freq	RX Tone/NAC	TX Freq	TX Tone/NAC	Mode (A,D, or M)	Remarks
	1	TACTICAL	TAC 1	DIV A/B	168.0500 N	123.0	168.0500 N	123.0	A	
	2	TACTICAL	TAC 2	DIV Y	168.2000 N	123.0	168.2000 N	123.0	A	
	3	TACTICAL	TAC 3	DIV Z	168.6000 N	123.0	168.6000 N	123.0	A	
	4	TACTICAL	TAC 4	NIGHT	166.7250 N	123.0	166.7250 N	123.0	A	
	5	TACTICAL	TAC 5		166.7750 N	123.0	166.7750 N	123.0	A	
	6	TACTICAL	TAC 6		168.2500 N	123.0	168.2500 N	123.0	A	
	7	COMMAND	CMD 7	ALL DIVS	170.4500 N	123.0	168.1000 N	123.0	A	
	8	AIR TO GROUND	A/G 25		168.7500 N		168.7500 N		A	
	9	AIR TO GROUND	A/G 05		166.7500 N		166.7500 N		A	
	10	AIR TO GROUND	A/G 29		166.9000 N		169.9000 N		A	
	14	TACTICAL	V MED 28	MEDICAL	155.3400 N		155.3400 N	156.7	A	
	15	TACTICAL	V FIRE 21	LOCAL FIRE	154.2800 N		154.2800 N	156.7	A	
	16	AIR GUARD	AIRGUARD		168.6250 N		168.6250 N	110.9	A	

5. Special Instructions:

6. Prepared By	(Communications Unit Leader)	Name: KEVIN ZURFLUH	Signature:
ICS 205	IAP Page	Date/Time: 04/27/2022 2000	

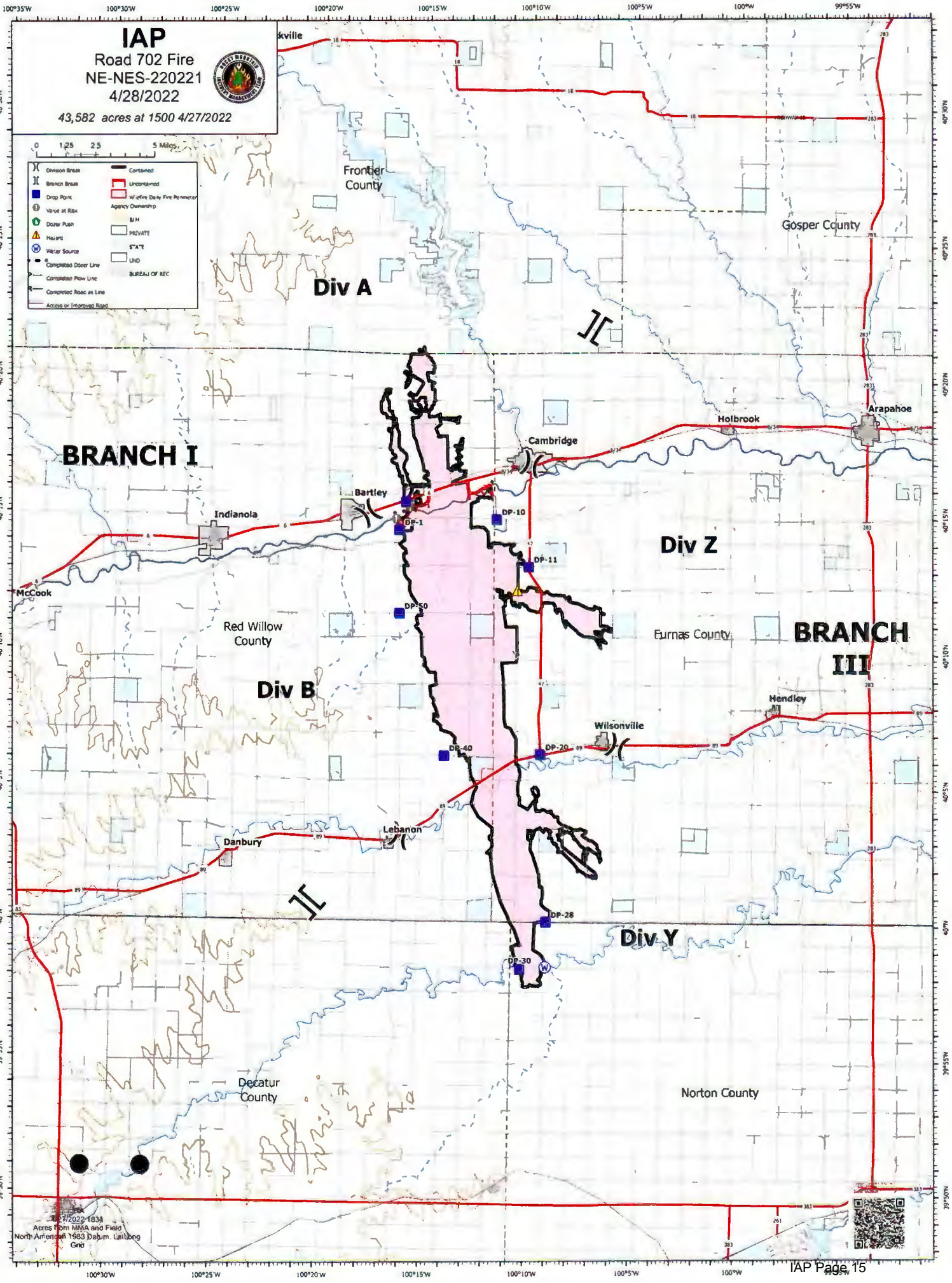
Controlled Unclassified Information//Basic

FINAL

IAP Page 3

Incident Phone List

Information	402.327.1511
Check-In and Demob	720.639.1426
Communications	720.527.2330
Facilities	720.693.3110
Finance	720.693.2702
	720.693.2307
Ground Support	620.727.6466
Logistics	435.300.0330
Ordering	843.359.8775
Supply	623.866.2163



IAP
 Road 702 Fire
 NE-NES-220221
 4/28/2022



43,582 acres at 1500 4/27/2022

0 1.25 2.5 5 Miles

Division Basin	Contoured
Branch Basin	Uncontoured
Drop Point	Water Daily Fire Perimeter
Water at Risk	Agency Ownership
Drop Point	BLM
Water Source	PRIVATE
Water Source	STATE
Water Source	LAND
Water Source	BUREAU OF REC.
Completed Drop Line	
Completed Flow Line	
Completed Road as Line	
Access or Improved Road	

BRANCH I

BRANCH III



HEALTH AND SAFETY MESSAGE

Communicate – Collaborate – Coordinate – Cooperate

Redeem personal and professional responsibilities to care for your self and those you are responsible for.

INCIDENT: Road 702

DATE: 4/28/22

Shift: Day and Night

Major Hazards and Risks:

- Hazard Trees
- Driving
- Communications
- Utility and infrastructure repairs
- Severe Weather

With this being still early in the season, this is the perfect time to conduct a solid AAR of your unit and see what needs to be dialed in for next time.

After Action Reviews

1. What was planned?

Review the intent of the mission

Desired end state (what does right look like).

2. What actually happened?

Establish the facts

Pool multiple perspectives to build a shared picture of what happened.

3. Why did it happen?

Analysis of cause and effect

Provide progressive refinement for drawing out explanations of what occurred.

4. What are we going to do next time?

Correct weaknesses and sustain strengths

Focus on items you can fix, rather than external forces outside of your control.

“Continuous improvement is better than delayed perfection”
Mark Twain

Safety Officers: Todd Legler & Jon Blackstone

CHECK-IN AND DEMOB TIPS

CHECK-IN

Submit the electronic check-in form using the QR code on front of IAP

Email the following items to 2022.nebraskaspring.checkin@firenet.gov

- Red card/fire card
- Manifest (Crews)

DEMOB

FOR EMERGENCY OR URGENT DEMOBS CONTACT YOUR SUPERVISOR FIRST AND THEN CONTACT THE DEMOB UNIT DIRECTLY AT 720.693.1426

If you need a flight, please email 2022.nebraskaspring.demob@firenet.gov 72 hours in advance or call 720.693.1426

After being notified by your supervisor of your tentative release date:

Step 1. Return all supplies, radios, etc. that were checked out.

Step 2. All vehicles that have been on the fireline **MUST** go through weed wash prior to completing Demob Inspection.

Step 3. Submit final time documents electronically to Finance per directions in the IAP. Provide a valid email address. Finance will post your time, let you review a draft, and send your final documents to you, all electronically.

Step 4. Complete Demob Checkout Form using QR code at the bottom of this page. Once you submit the form, you are released from the incident and may begin travel home. You do not need to physically come to Demob. Safe Travels!

*Any questions about the check-in or demob process, call 720.693.1426
or email 2022.nebraskaspring.demob@firenet.gov*



INCIDENT DEMOB



702 ROAD DEMOB & FINANCE PROCEDURES

Finance Email: 2022.nebraskaspring.finance@firenet.gov

FINANCE HOTLINE: (720) 693-2307

Overhead, Crews, Contractors, and Cooperator Resources

Send Time Docs To:

2022.nebraskaspring.finance@firenet.gov

SUBJECT: Include Key Word: *Time*

Or Scan the QR Code below:



Overhead, Crews, Contractors, and Cooperator Resources

FINANCE DEMOB PROCEDURES

IN-PERSON DEMOB: Please visit Finance at ICP, Lincoln County Fairgrounds, 5015 Rodeo Road, North Platte, NE. Call **(720) 693-2307** with any questions prior to arriving.

VIRTUAL DEMOB: All Resources should ensure their incident time is up to date prior to scheduled demob date/time. After all time and required documents are received, Finance will send a **DRAFT OF-288/OF-286's** to the resource.

The resource should review their document in a timely manner and reply to the Finance email with the statement "No Corrections Necessary" or a description of any issues. After Finance receives the reply email, any discrepancies will be resolved. Next, the resource will be sent the **FINAL DOCUMENT** for signature (wet ink or digital) and will then email the signed document back to Finance.

If you are unable to sign, respond to that effect and authorize us to sign digitally on your behalf. Finance will then sign and finalize the **FINAL OF-288/OF-286** and email it back to the resource for your records. This completes the process.



SAW PARTS REQUEST

Revised 21JUL2021

CREW NAME			
RESOURCE #		REQUEST DATE	
CONTACT NAME		PICK UP DATE	
PHONE #			
SAW INFO			
MAKE	STIHL _____ HUSQVARNA _____ OTHER _____		
MODEL			
BAR LENGTH			
AMOUNT	PART NAME & NUMBER	S #	
# of DRIVERS			
PITCH	1/4" _____ 3/8" _____ .325" _____ .404" _____ 3/4" _____		
GUAGE	.043 _____ .050 _____ .058 _____ .063 _____		
TOOTH LAYOUT	FULL _____ SEMI-SKIP _____ FULL SKIP _____		
TOOTH CUT	CHISEL _____ MICRO-CHISEL _____ SEMI-CHISEL _____ CHAMFER-CHISEL _____		
# of SPROCKET TEETH			
APPROVAL SIGNATURE			

MEDICAL PLAN (ICS 206 WF)

Incident/Project Name		1. Operational Period					
Road 702 Fire		April 28, 2022 Day/Night					
2. Ambulance Services							
Name	Complete Address	Phone		Advanced Life Support (ALS)			
Cambridge Rescue Service	209 Nelson Street Cambridge, Nebraska, 69022	Furnas County Sheriff 308-268-2245 or 911		No			
Beaver City EMS	301 10TH Street Beaver City, NE 68926	Furnas County Sheriff 308-268-2245 or 911		No			
3. Air Ambulance Services							
Name	Phone	Type of Aircraft & Capability					
Air Care Kearney	Direct- 308-865-7911	Bell 429- Night Vision					
Great Plains/Lifenet North Platte	Direct- 844-491-1247	EC-135- Night Vision					
4. Hospitals							
Name Complete Address	GPS Datum – WGS 84 Coordinate Standard Degrees Decimal Minutes DD° MM.MMM' N - Lat DD° MM.MMM' W - Long	Travel Time TO/FROM TOWN OF CAMBRIDGE Air Gnd		Phone	Helipad Yes No		Level of Care Facility
Tri-Valley/Cambridge Mem Hosp 1305 Old US Hwy 6 #34, Cambridge, NE 69022	Lat: _____ Long: _____	< 5 Min	10 Min	ER Direct 308-697-1112	X		Level 4
McCook Community Hospital 1301 E H St McCook, NE 69001	Lat: _____ Long: _____	10 Min	30 Min	ER Direct 308-344-8399	X		Level 4
Kearney Regional Med Center 804 22nd Ave Kearney, NE 68845	Lat: _____ Long: _____	25 Min	90 Min	ER Direct 308-455-8359	X		Level 2
Good Samaritan Hospital 10 E 31st St Kearney, NE 68847	Lat: _____ Long: _____	25 Min	90 Min	ER Direct 308-865-7997	X		Level 2
St. Elizabeth Regional Med Cntr 555 S 70th St Lincoln, NE 68510	Lat: _____ Long: _____	60 Min	3.5 Hrs	Burn Unit Direct 402-219-7680	X		Burn Center
Great Plains Urgent Care 220 West Leota, Suite 2 North Platte, NE 69101	Lat: _____ Long: _____	N/A	60 Min	Office 402-534-2900		X	Urgent Care
5. Division Branch Group							
DIVISION A/B	Area Location Capability						
	EMS Responders & Capability:		EMTF Mavencamp- Shared With All Divisions Continue To Determine Medical Capabilities Within Your Division				
	Equipment Available on Scene:						
	Medical Emergency Channel:		Command 7- If no comms, call 911 first if emergent or MEDL @ 970-261-1401				
	ETA for Ambulance to Scene:						
	Air:		25 Min to North End / 30 Min to South End (Launch from Kearney)				
	Ground:		10 Min to North End / 15 Min to South End (Dispatched from Cambridge)				
	Approved Helispot:						
	Lat:						
	Long:						

MEDICAL PLAN (ICS 206 WF)

DIVISION Y	EMS Responders & Capability:	EMTF Mavencamp- Shared With All Divisions Continue To Determine Medical Capabilities Within Your Division
	Equipment Available on Scene:	
	Medical Emergency Channel:	Command 7- If no comms, call 911 first if emergent or MEDL @ 970-261-1401
	ETA for Ambulance to Scene:	
	Air:	20 Min to North End / 25 Min to South End (Launch from Kearney)
	Ground:	20 Min to North End / 30 Min to South End (Dispatched from Cambridge)
	Approved Helispot:	
	Lat:	
Long:		

DIVISION Z	EMS Responders & Capability:	EMTF Mavencamp- Shared With All Divisions Continue To Determine Medical Capabilities Within Your Division
	Equipment Available on Scene:	
	Medical Emergency Channel:	Command 7- If no comms, call 911 first if emergent or MEDL @ 970-261-1401
	ETA for Ambulance to Scene:	
	Air:	20 Min to North End / 25 Min to South End (Launch from Kearney)
	Ground:	5 Min to North End / 20 Min to South End (Dispatched from Cambridge)
	Approved Helispot:	
	Lat:	
Long:		

Prepared by:	Date and Time	Reviewed By Safety Officer
Kevin Meads MEDL(t)	4/27/2022 1900	Todd Leglar SOF1

Overnight Medical Emergency

Identify Medical Resources Within Your Division/Group At Night Briefing

- All resources listed above are 24 hour
- Utilize embedded medical resources
- Call 911 with location and emergency
- Contact MEDL @ 970-261-1401 ASAP

MEDICAL PLAN (ICS 206 WF)

Controlled Unclassified Information//Basic

Medical Incident Report

FOR A NON-EMERGENCY INCIDENT, WORK THROUGH CHAIN OF COMMAND TO REPORT AND TRANSPORT INJURED PERSONNEL AS NECESSARY.

FOR A MEDICAL EMERGENCY: IDENTIFY ON SCENE INCIDENT COMMANDER BY NAME AND POSITION AND ANNOUNCE "MEDICAL EMERGENCY" TO INITIATE RESPONSE FROM IMT COMMUNICATIONS/DISPATCH.

Use the following items to communicate situation to communications/dispatch.

1. CONTACT COMMUNICATIONS / DISPATCH (Verify correct frequency prior to starting report)

Ex: "Communications, Div. Alpha. Stand-by for Emergency Traffic."

2. INCIDENT STATUS: Provide incident summary (including number of patients) and command structure.

Ex: "Communications, I have a Red priority patient, unconscious, struck by a falling tree. Requesting air ambulance to Forest Road 1 at (Lat./Long.) This will be the Trout Meadow Medical, IC is TFLD Jones. EMT Smith is providing medical care."

Severity of Emergency / Transport Priority	<input type="checkbox"/> RED / PRIORITY 1 Life or limb threatening injury or illness. Evacuation need is IMMEDIATE <i>Ex: Unconscious, difficulty breathing, bleeding severely, 2° - 3° burns more than 4 palm sizes, heat stroke, disoriented.</i> <input type="checkbox"/> YELLOW / PRIORITY 2 Serious Injury or illness. Evacuation may be DELAYED if necessary. <i>Ex: Significant trauma, unable to walk, 2° - 3° burns not more than 1-3 palm sizes.</i> <input type="checkbox"/> GREEN / PRIORITY 3 Minor Injury or illness. Non-Emergency transport <i>Ex: Sprains, strains, minor heat-related illness.</i>	
Nature of Injury or Illness & Mechanism of Injury		Brief Summary of Injury or Illness <i>(Ex: Unconscious, Struck by Falling Tree)</i>
Transport Request		Air Ambulance / Short Haul/Hoist Ground Ambulance / Other
Patient Location		Descriptive Location & Lat. / Long. (WGS84)
Incident Name		Geographic Name + "Medical" <i>(Ex: Trout Meadow Medical)</i>
On-Scene Incident Commander		Name of on-scene IC of Incident within an Incident <i>(Ex: TFLD Jones)</i>
Patient Care		Name of Care Provider <i>(Ex: EMT Smith)</i>

3. INITIAL PATIENT ASSESSMENT: Complete this section for each patient as applicable (start with the most severe patient)

Patient Assessment: See IRPG page 106

Treatment:

4. TRANSPORT PLAN:

Evacuation Location (if different): (Descriptive Location (drop point, intersection, etc.) or Lat. / Long.) Patient's ETA to Evacuation Location:

Helispot / Extraction Site Size and Hazards:

5. ADDITIONAL RESOURCES / EQUIPMENT NEEDS:

Example: Paramedic/EMT, Crews, Immobilization Devices, AED, Oxygen, Trauma Bag, IV/Fluid(s), Splints, Rope rescue, Wheeled litter, HAZMAT, Extrication

6. COMMUNICATIONS: Identify State Air/Ground EMS Frequencies and Hospital Contacts as applicable

Function	Channel Name/Number	Receive (RX)	Tone/NAC *	Transmit (TX)	Tone/NAC *
COMMAND					
AIR-TO-GRND					
TACTICAL					

7. CONTINGENCY: Considerations: If primary options fail, what actions can be implemented in conjunction with primary evacuation method? Be thinking ahead.

8. ADDITIONAL INFORMATION: Updates/Changes, etc.

REMEMBER: Confirm ETA's of resources ordered. Act according to your level of training. Be Alert. Keep Calm. Think Clearly. Act Decisively.