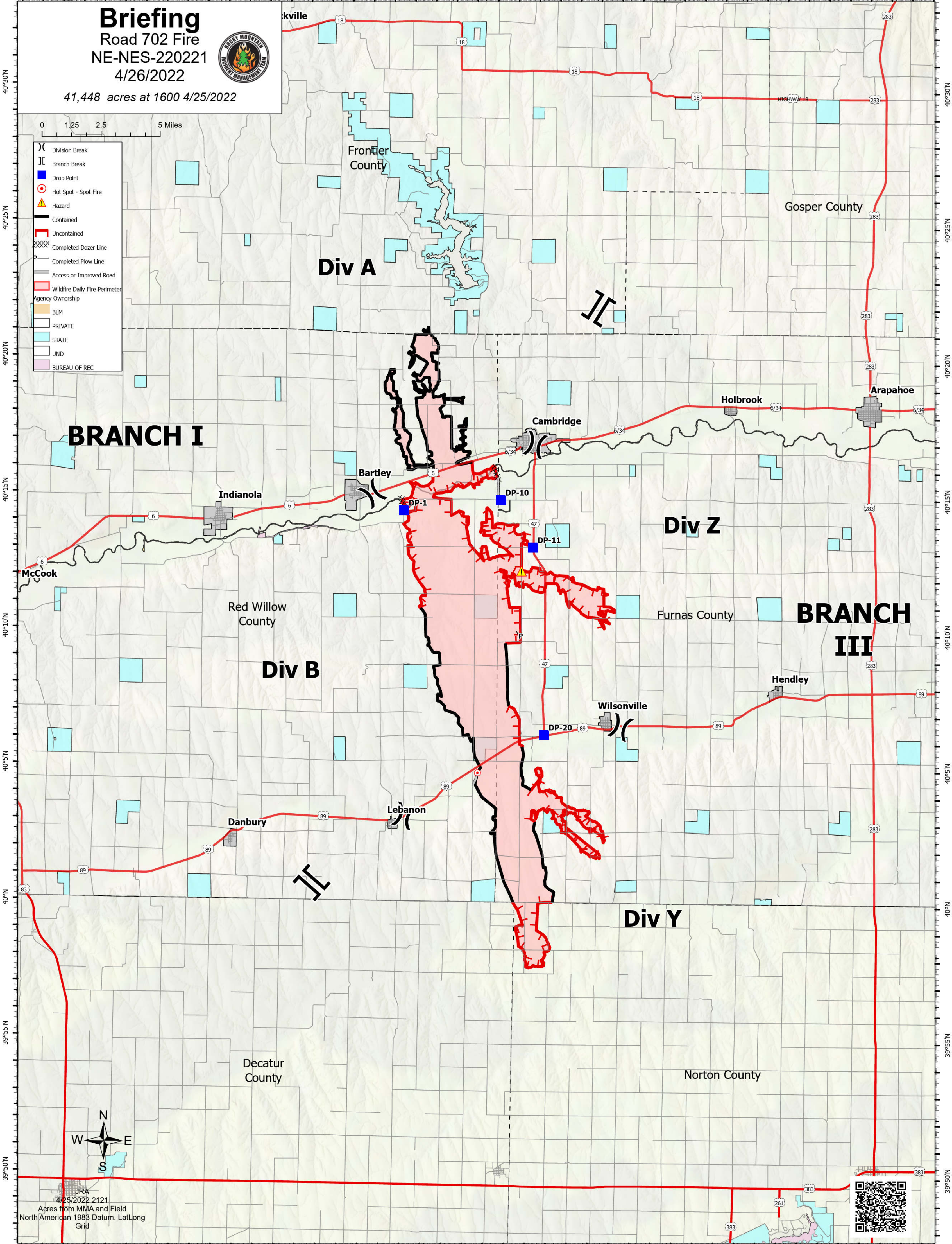


100°35'W 100°30'W 100°25'W 100°20'W 100°15'W 100°10'W 100°5'W 100°W 99°55'W



Briefing
 Road 702 Fire
 NE-NES-220221
 4/26/2022
 41,448 acres at 1600 4/25/2022



0 1.25 2.5 5 Miles

- (X) Division Break
- [] Branch Break
- Drop Point
- Hot Spot - Spot Fire
- ▲ Hazard
- ▭ Contained
- ▭ Uncontained
- ▨ Completed Dozer Line
- ▨ Completed Plow Line
- ▭ Access or Improved Road
- ▭ Wildfire Daily Fire Perimeter
- Agency Ownership
- ▭ BLM
- ▭ PRIVATE
- ▭ STATE
- ▭ UND
- ▭ BUREAU OF REC

BRANCH I

BRANCH III

Div A

Div B

Div Z

Div Y

JRA
 4/25/2022 2121
 Acres from MMA and Field
 North American 1983 Datum. LatLong
 Grid

