

100°35'W 100°30'W 100°25'W 100°20'W 100°15'W 100°10'W 100°5'W 100°W 99°55'W

40°30'N 40°25'N 40°20'N 40°15'N 40°10'N 40°5'N 40°N 39°55'N 39°50'N

Briefing

Road 702 Fire

NE-NES-220221

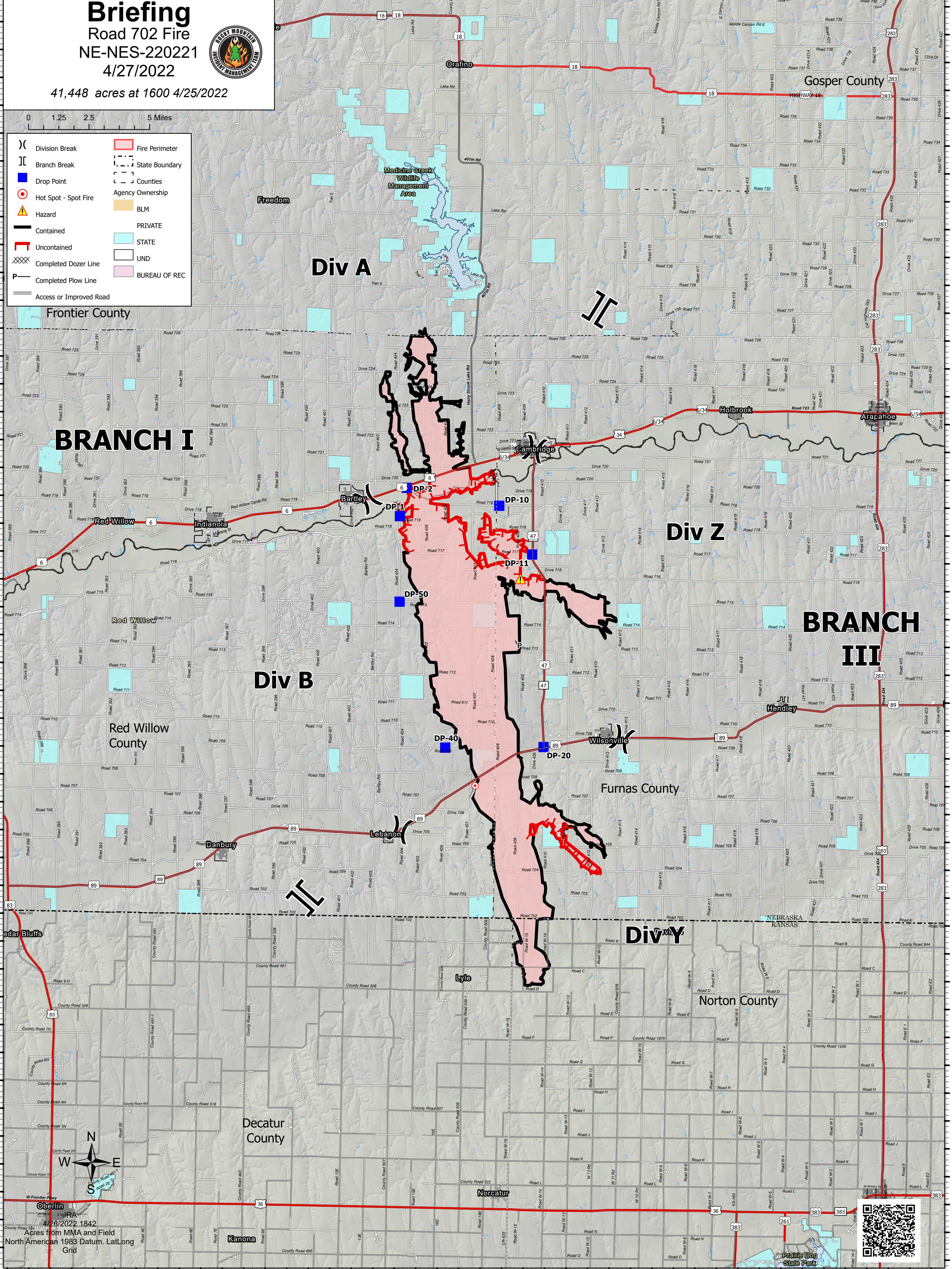
4/27/2022



41,448 acres at 1600 4/25/2022

0 1.25 2.5 5 Miles

- () Division Break
- || Branch Break
- Drop Point
- ⦿ Hot Spot - Spot Fire
- ⚠ Hazard
- ▬ Contained
- ▬ Uncontained
- ⊗ Completed Dozer Line
- P Completed Plow Line
- ▬ Access or Improved Road
- ▬ Fire Perimeter
- ▬ State Boundary
- ▬ Counties
- ▬ Agency Ownership
- BLM
- PRIVATE
- STATE
- UND
- BUREAU OF REC



W Frontier Hwy
Oberlin
4/26/2022 1842
Acres from MMA and Field
North American 1983 Datum, LatLong
Grid



100°30'W 100°25'W 100°20'W 100°15'W 100°10'W 100°5'W 100°W 99°55'W