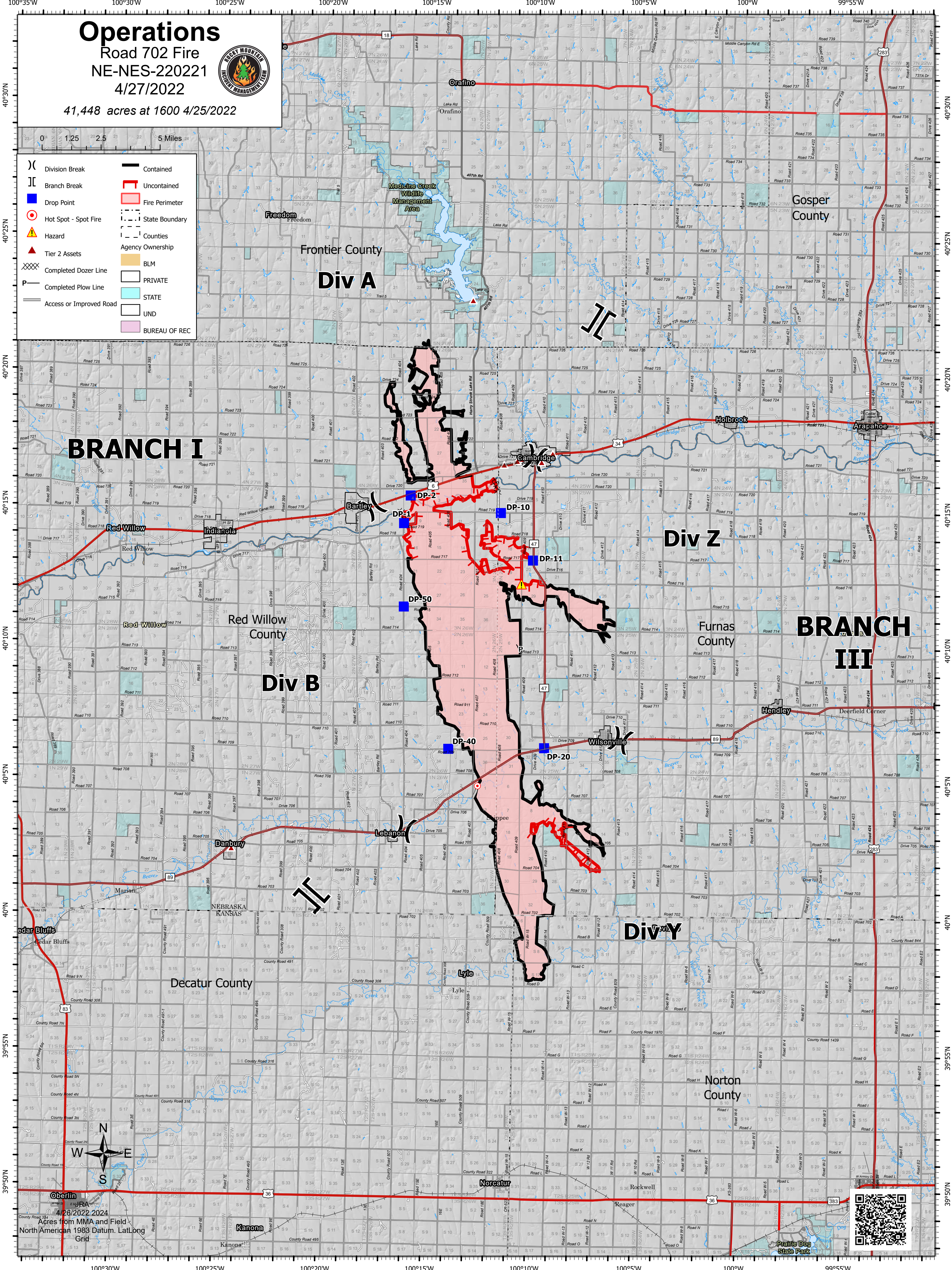


# Operations

Road 702 Fire  
NE-NES-220221  
4/27/2022

41,448 acres at 1600 4/25/2022



- (X) Division Break
- (||) Branch Break
- Drop Point
- Hot Spot - Spot Fire
- Hazard
- Tier 2 Assets
- Completed Dozer Line
- Completed Plow Line
- Access or Improved Road
- Contained
- Uncontained
- Fire Perimeter
- State Boundary
- Counties
- Agency Ownership
- BLM
- PRIVATE
- STATE
- UND
- BUREAU OF REC

## BRANCH I

## Div A

## Div Z

## Div B

## BRANCH III

## Div Y

Acres from MMA and Field  
North American 1983 Datum. LatLong  
Grid

