

100°35'W 100°30'W 100°25'W 100°20'W 100°15'W 100°10'W 100°5'W 100°W 99°55'W

40°30'N 40°25'N 40°20'N 40°15'N 40°10'N 40°5'N 40°N 39°55'N 39°50'N

Briefing

Road 702 Fire

NE-NES-220221

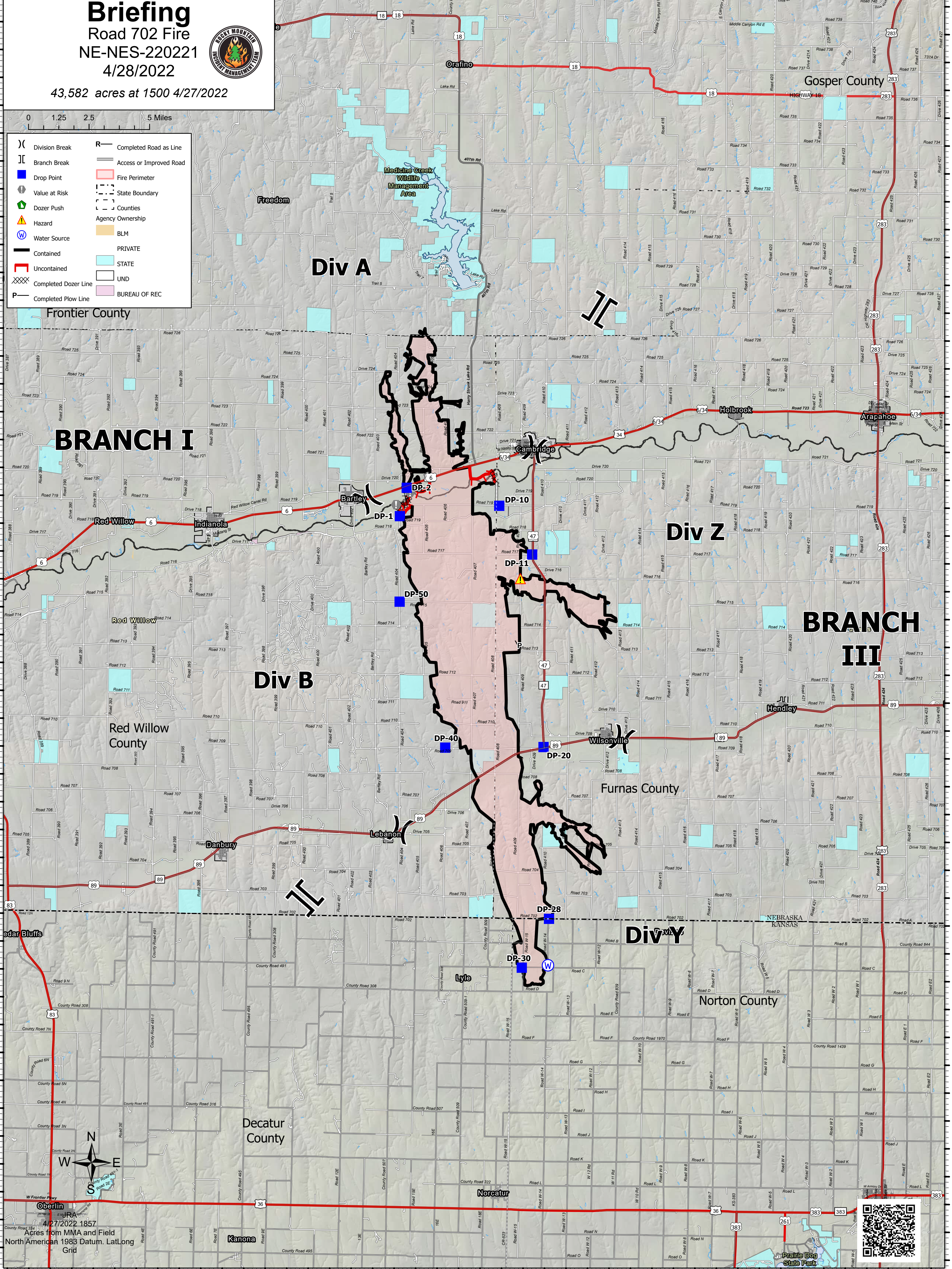
4/28/2022



43,582 acres at 1500 4/27/2022

0 1.25 2.5 5 Miles

- | | | | |
|-----|----------------------|---|-------------------------|
| () | Division Break | R | Completed Road as Line |
| [] | Branch Break | — | Access or Improved Road |
| ■ | Drop Point | ▭ | Fire Perimeter |
| ⚠ | Value at Risk | ▭ | State Boundary |
| 🚧 | Dozer Push | ▭ | Counties |
| ⚠ | Hazard | ▭ | Agency Ownership |
| 🌊 | Water Source | ▭ | BLM |
| — | Contained | ▭ | PRIVATE |
| — | Uncontained | ▭ | STATE |
| XXX | Completed Dozer Line | ▭ | UND |
| P | Completed Plow Line | ▭ | BUREAU OF REC |



100°30'W 100°25'W 100°20'W 100°15'W 100°10'W 100°5'W 100°W 99°55'W

39°50'N

39°50'N

39°55'N

39°55'N

40°N

40°N

40°5'N

40°5'N

40°10'N

40°10'N

40°15'N

40°15'N

40°20'N

40°20'N

40°25'N

40°25'N

40°30'N

40°30'N