

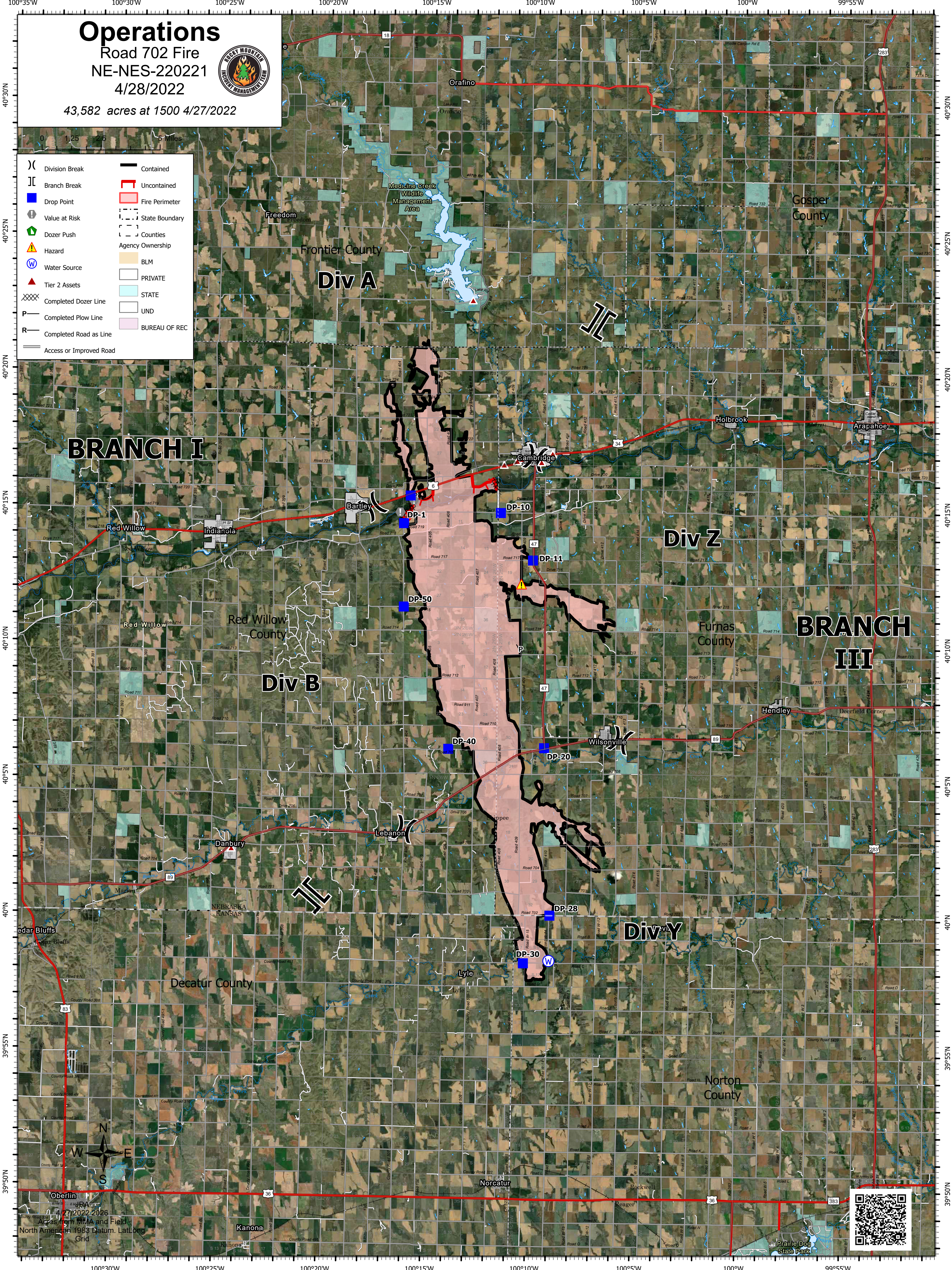
Operations

Road 702 Fire
NE-NES-220221
4/28/2022



43,582 acres at 1500 4/27/2022

- (X) Division Break
- (II) Branch Break
- Blue square Drop Point
- Value at Risk (circle with X)
- Green house Dozer Push
- Yellow triangle Hazard
- Blue circle with W Water Source
- Red triangle Tier 2 Assets
- XXXX Completed Dozer Line
- P Completed Plow Line
- R Completed Road as Line
- Grey line Access or Improved Road
- Black line Contained
- Red outline Uncontained
- Red outline Fire Perimeter
- Dashed line State Boundary
- Dashed line Counties
- Yellow box BLM
- White box PRIVATE
- Light blue box STATE
- White box UND
- Pink box BUREAU OF REC



Scale: 0, 1.25, 2.5, 5 Miles
N
W E
S
Prairie Dog State Park
Aerial imagery from 2014-2022
Acres from MMA and Field
North American 1983 Datum. Lat/Long
Grid