

Operations

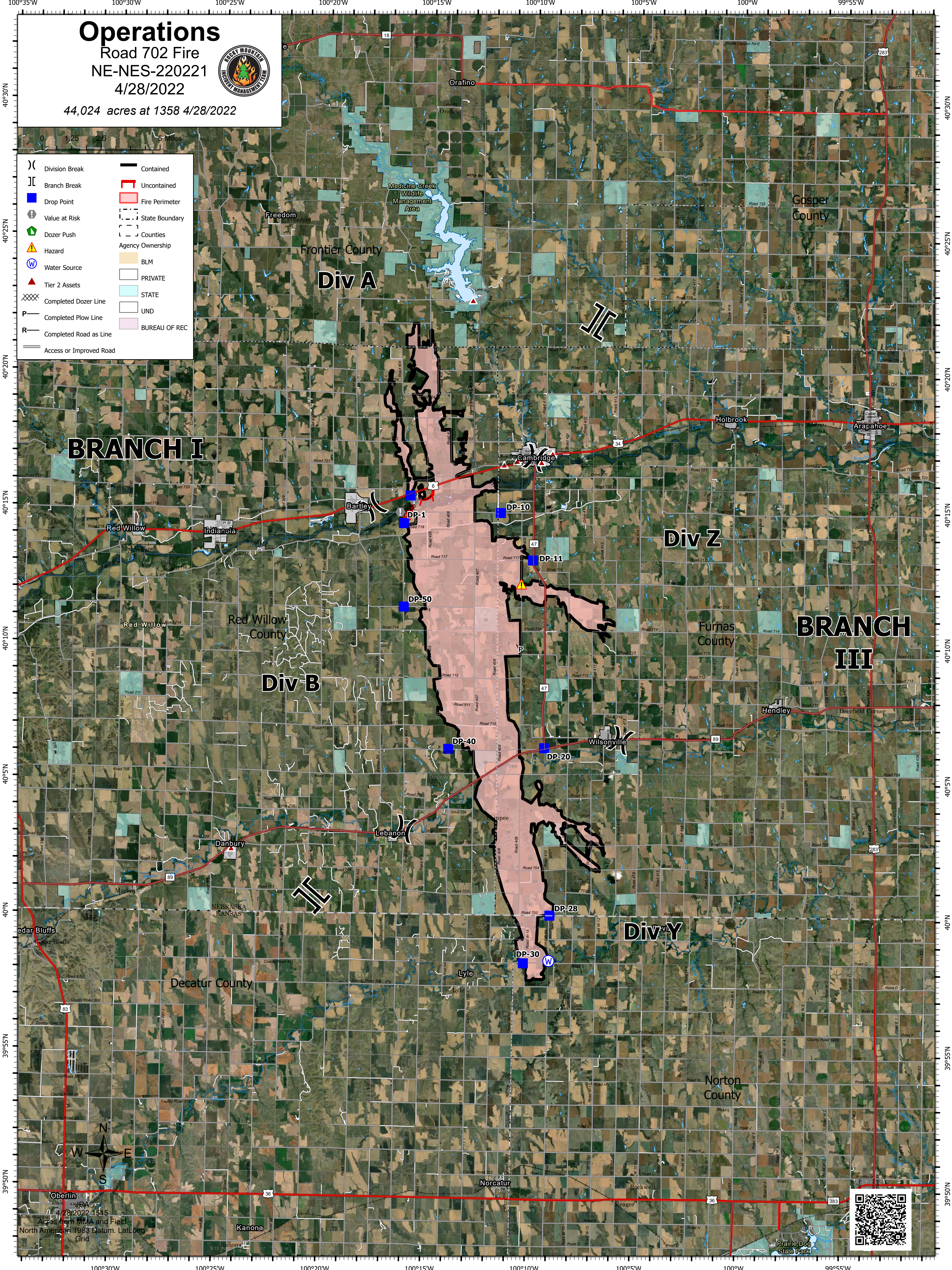
Road 702 Fire
NE-NES-220221
4/28/2022



44,024 acres at 1358 4/28/2022



- | | | | |
|------|-------------------------|---|------------------|
| (X) | Division Break | — | Contained |
| (II) | Branch Break | — | Uncontained |
| ■ | Drop Point | — | Fire Perimeter |
| ⚠ | Value at Risk | — | State Boundary |
| 🚧 | Dozer Push | — | Counties |
| ⚠ | Hazard | — | Agency Ownership |
| 🌊 | Water Source | — | BLM |
| ▲ | Tier 2 Assets | — | PRIVATE |
| XXXX | Completed Dozer Line | — | STATE |
| P | Completed Plow Line | — | UND |
| R | Completed Road as Line | — | BUREAU OF REC |
| — | Access or Improved Road | | |



44,024 acres at 1358 4/28/2022
Acres from MMA and Field
North American 1983 Datum. Lat/Long
Grid