

107°6'0"W

107°4'0"W

107°2'0"W



Infrared Map

Plumtaw
CO-SJF-000203

IR Flight: May 24 2022, 2306 MDT
Acres: 721.4

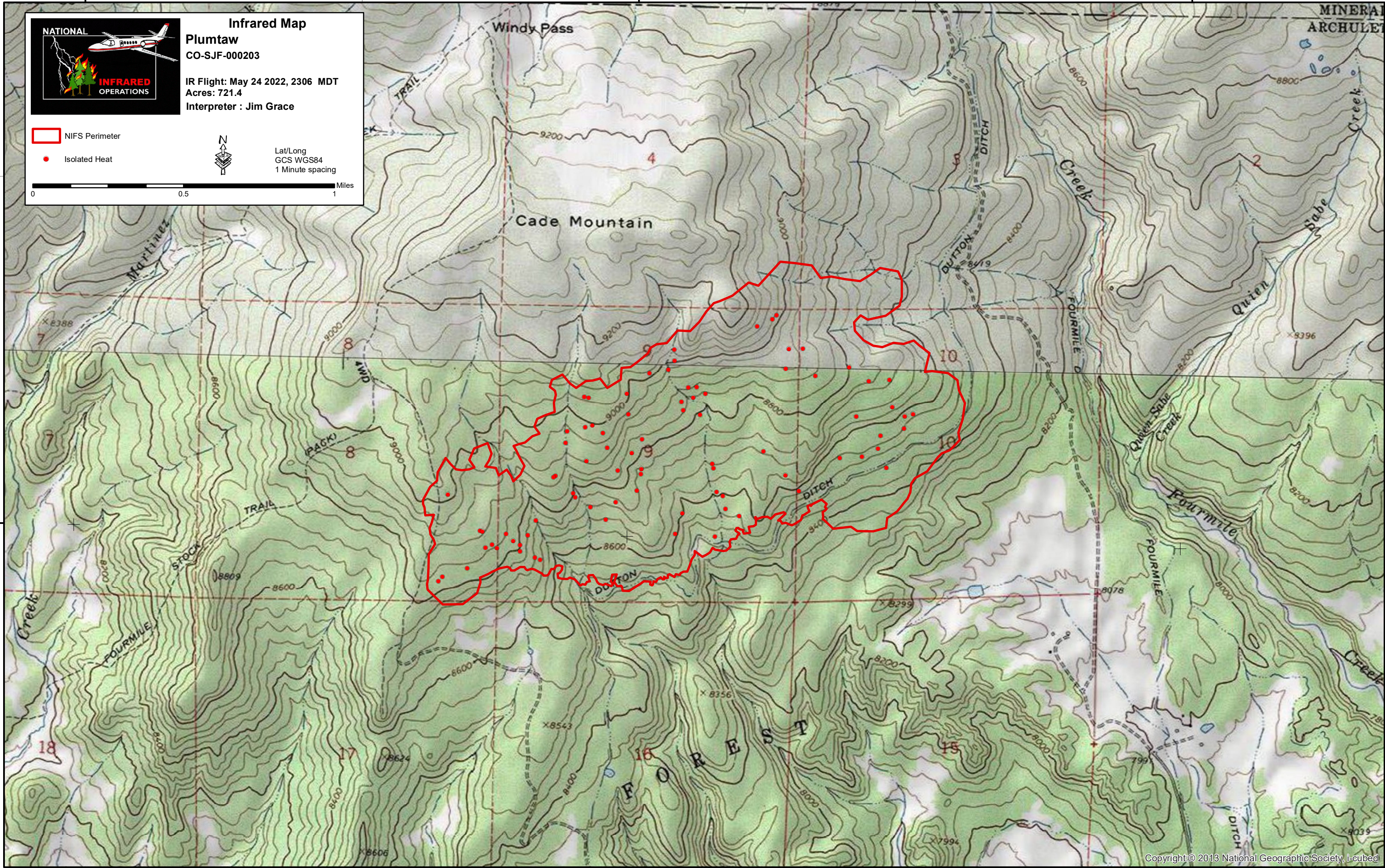
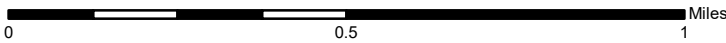
Interpreter : Jim Grace

NIFS Perimeter

Isolated Heat



Lat/Long
GCS WGS84
1 Minute spacing



37°22'0"N

37°22'0"N

107°6'0"W

107°4'0"W

107°2'0"W