


107°6'0"W

107°4'0"W



107°2'0"W


NATIONAL INFRARED OPERATIONS

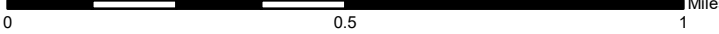


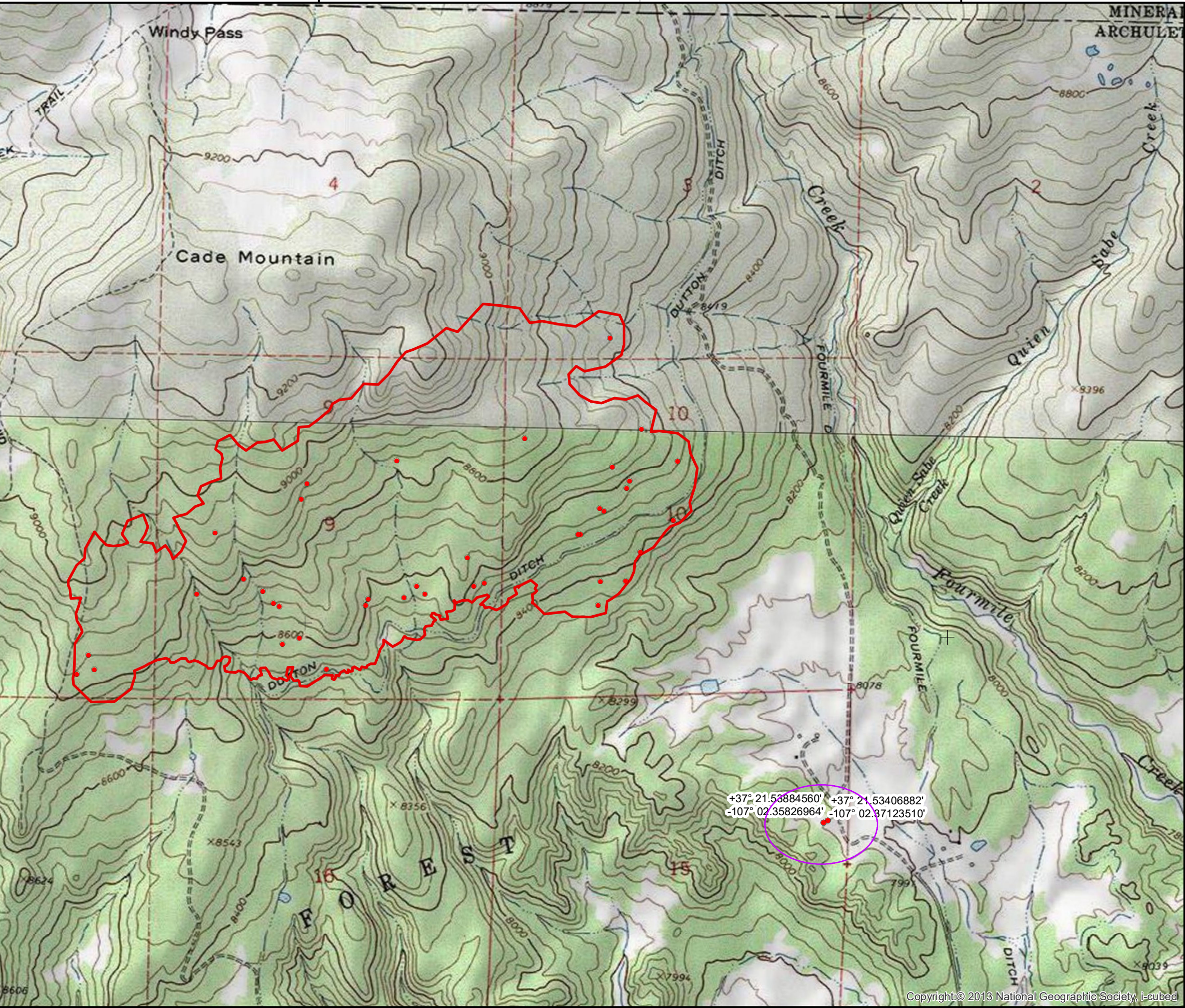
Infrared Map
Plumtaw
 CO-SJF-000203

IR Flight: May 25 2022, 2021 MDT
 Acres: 721.4
 Interpreter : Jim Grace

 NIFS Perimeter
 Isolated Heat

 N
 Lat/Long
 GCS WGS84
 1 Minute spacing

 Miles
 0 0.5 1



37°22'0"N

37°22'0"N

107°6'0"W

107°4'0"W

107°2'0"W