

107°6'0"W

107°4'0"W

107°2'0"W



Infrared Map

Plumtaw
CO-SJF-000203

IR Flight: May 26 2022, 2126 MDT
Acres: 721.4

Interpreter : Jim Grace

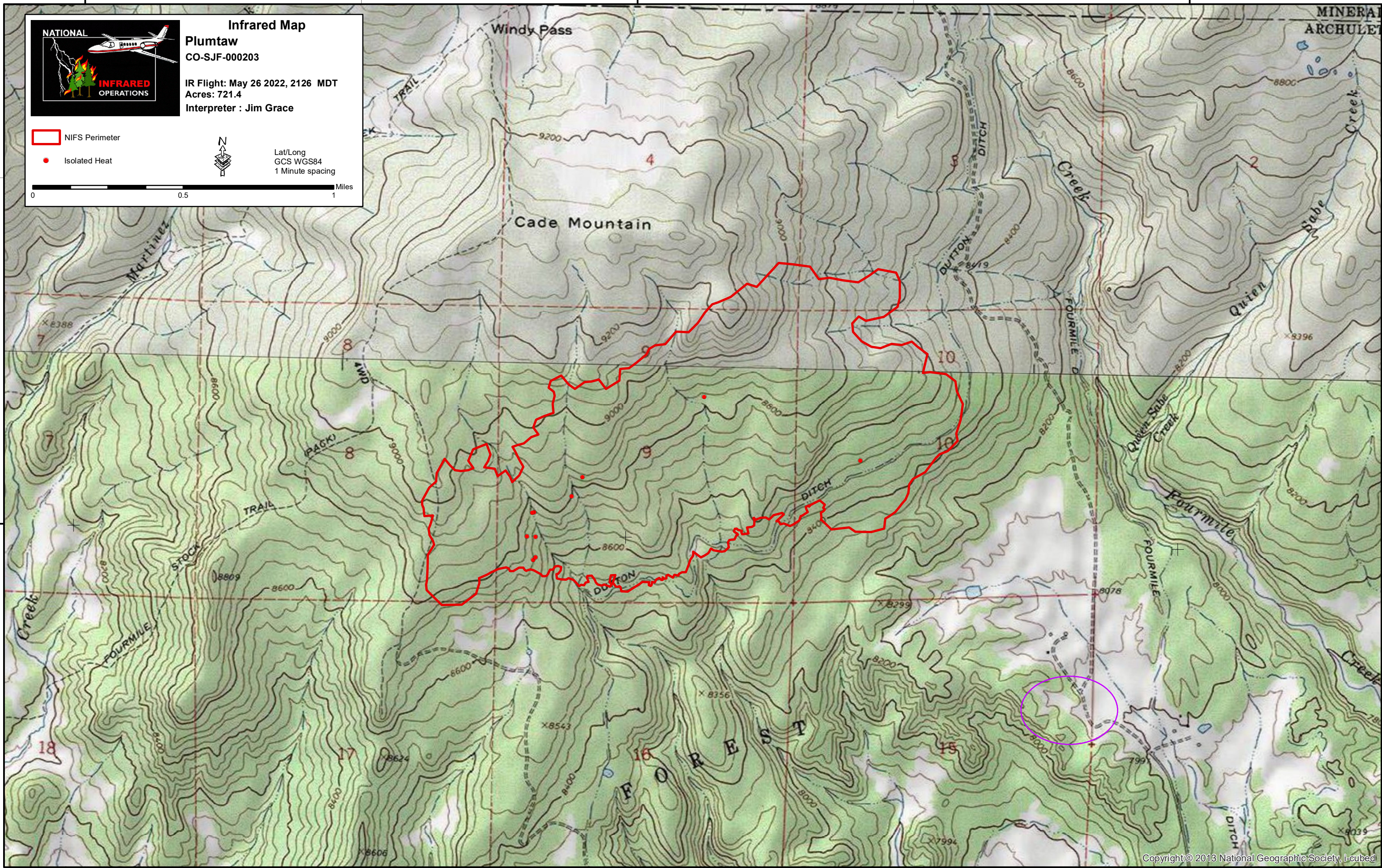
NIFS Perimeter

Isolated Heat



Lat/Long
GCS WGS84
1 Minute spacing

0 0.5 1 Miles



37°22'0"N

37°22'0"N

107°6'0"W

107°4'0"W

107°2'0"W