

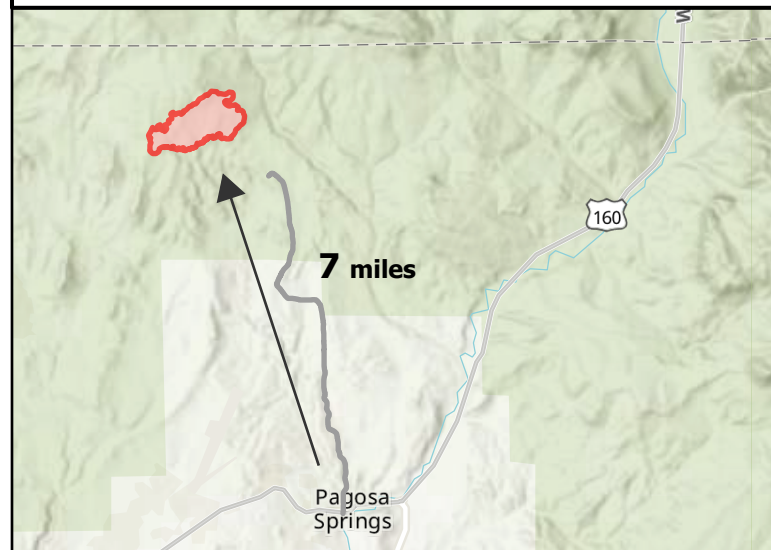
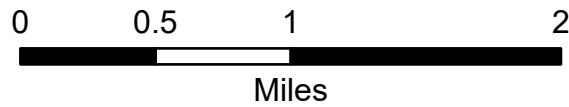
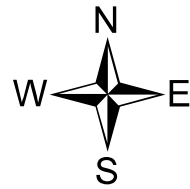
Public Information

Plumtaw
COSJF000203

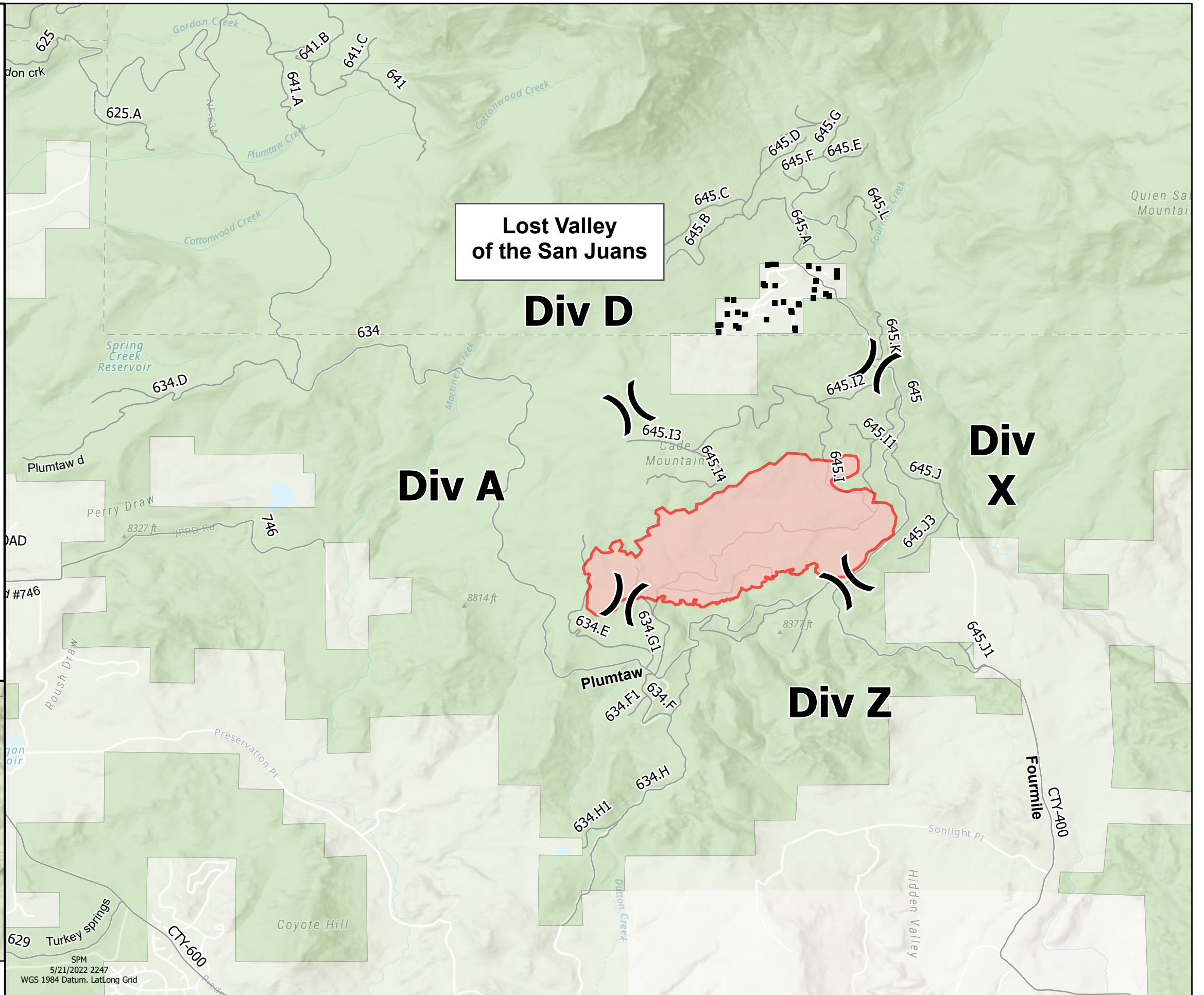
5/22/2022 Day

721 acres at 5/21/2022 @ 1358
12% contained

- () Division Break
- Structures
- ▭ Wildfire Daily Fire Perimeter
- Roads
- Private Lands
- National Forest



Proximity Map



SPM
5/21/2022 2247
WGS 1984 Datum, Lat/Long Grid