

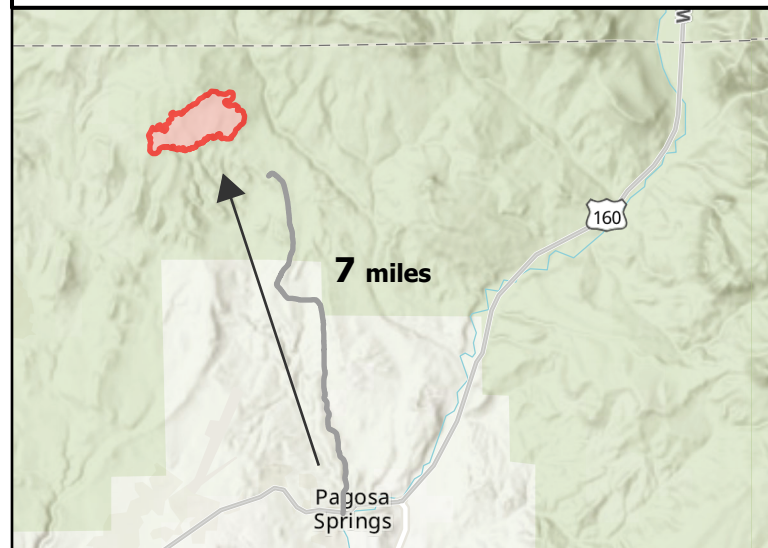
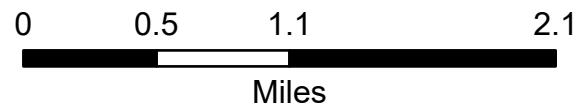
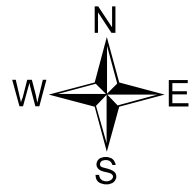
Transportation

Plumtaw COSJF000203

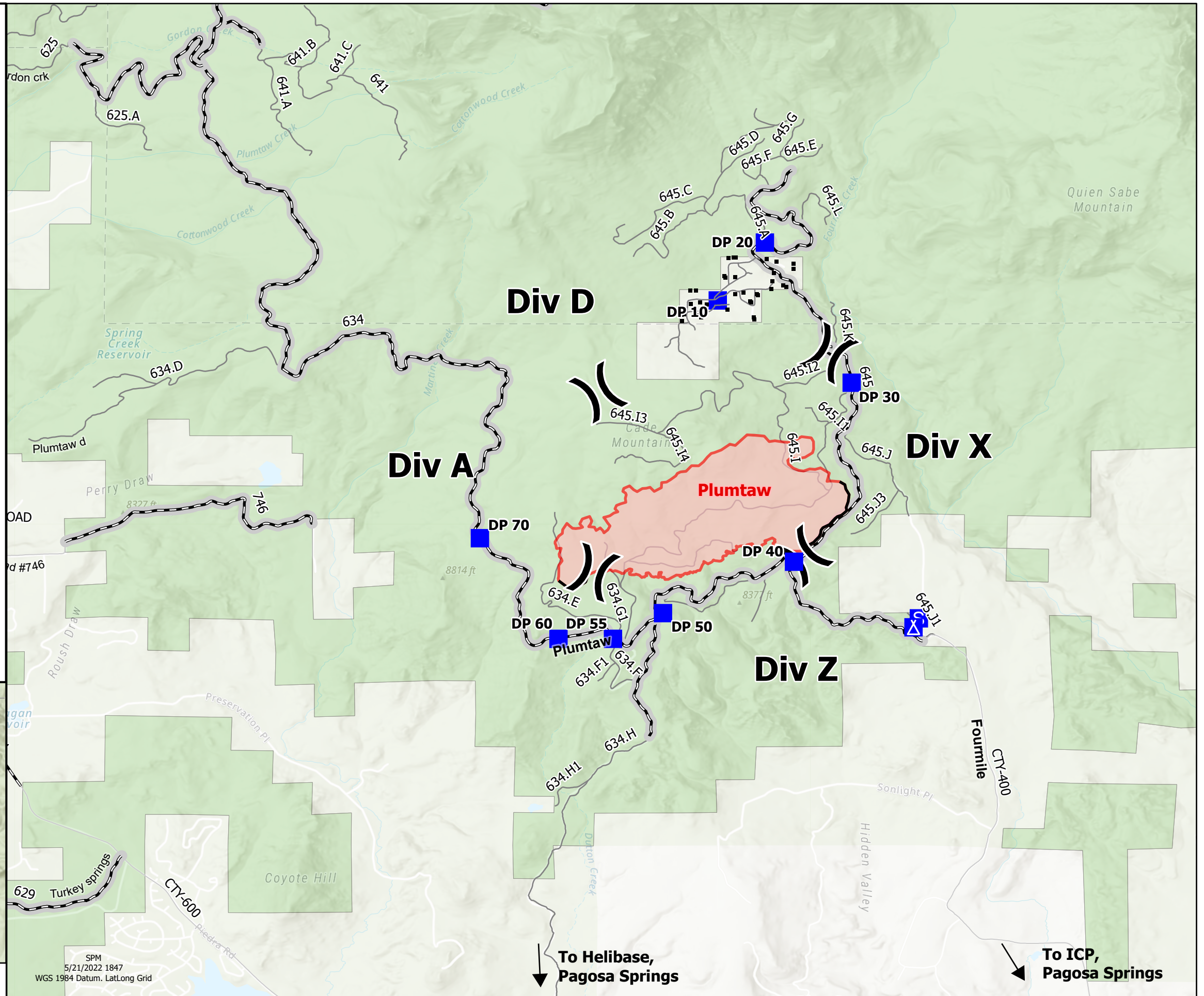
5/22/2022

721 acres at 5/21/2022 @ 1358

- Structures
-) (Division Break
- Drop Point
- ▲ Camp
- Staging Area
- Contained
- Wildfire Daily Fire Perimeter
- Roads Open to All Vehicles, Yearlong
- Roads Open to All Vehicles, Seasonal
- Other Public Roads
- Non-Motorized Roads
- Private Lands
- National Forest



Proximity Map



SPM
5/21/2022 1847
WGS 1984 Datum. Lat/Long Grid