

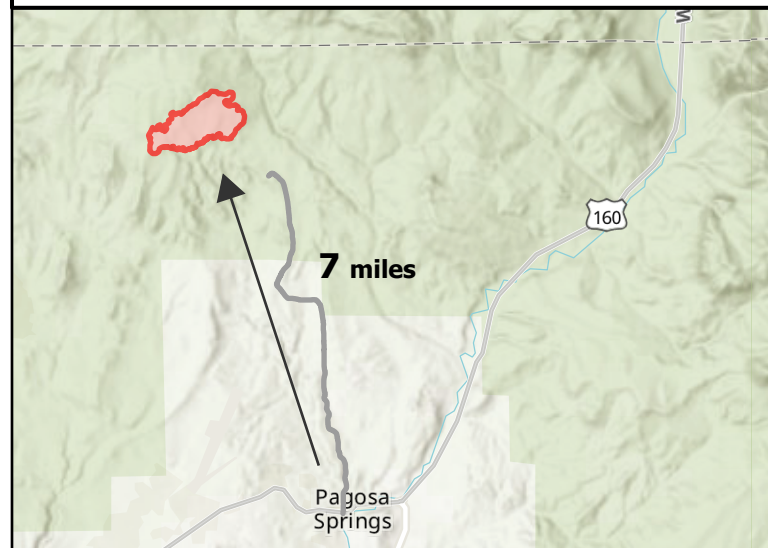
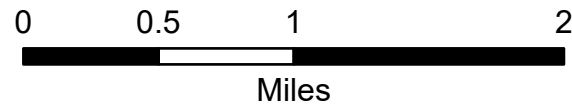
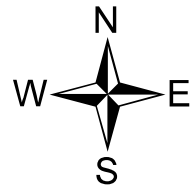
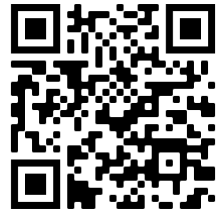
# Public Information

Plumtaw  
COSJF000203

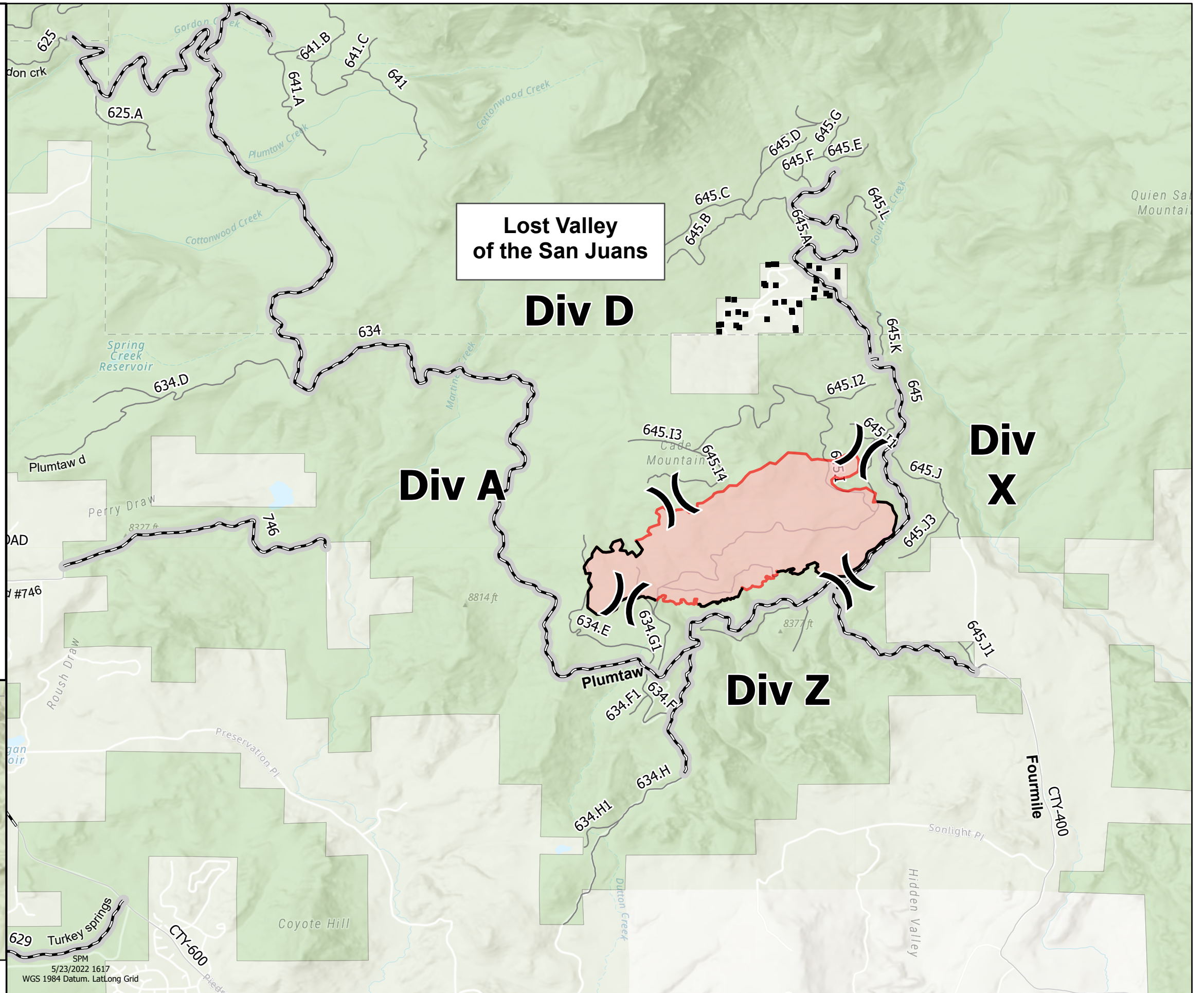
5/24/2022 Day

721 acres at 5/21/2022 @ 1358  
51% contained

- (X) Division Break
- Structures
- ▭ Wildfire Daily Fire Perimeter
- ▭ Private Lands
- ▭ National Forest
- Roads Open to All Vehicles, Yearlong
- Roads Open to All Vehicles, Seasonal
- Other Public Roads
- Non-Motorized Roads



Proximity Map



SPM  
5/23/2022 1617  
WGS 1984 Datum, Lat/Long Grid