

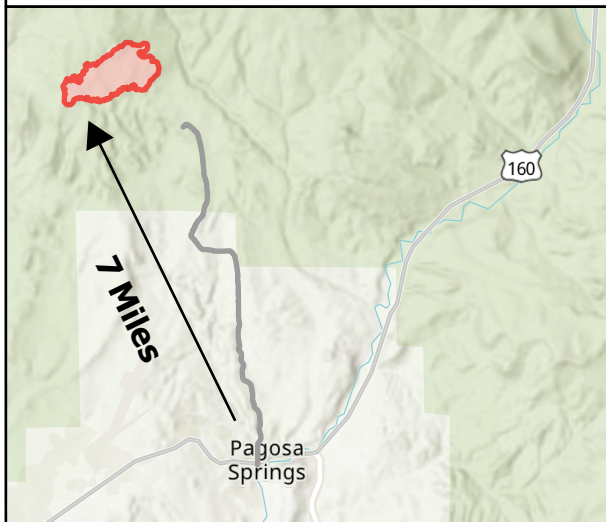
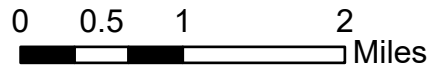
Transportation

Plumtaw
COSJF000203

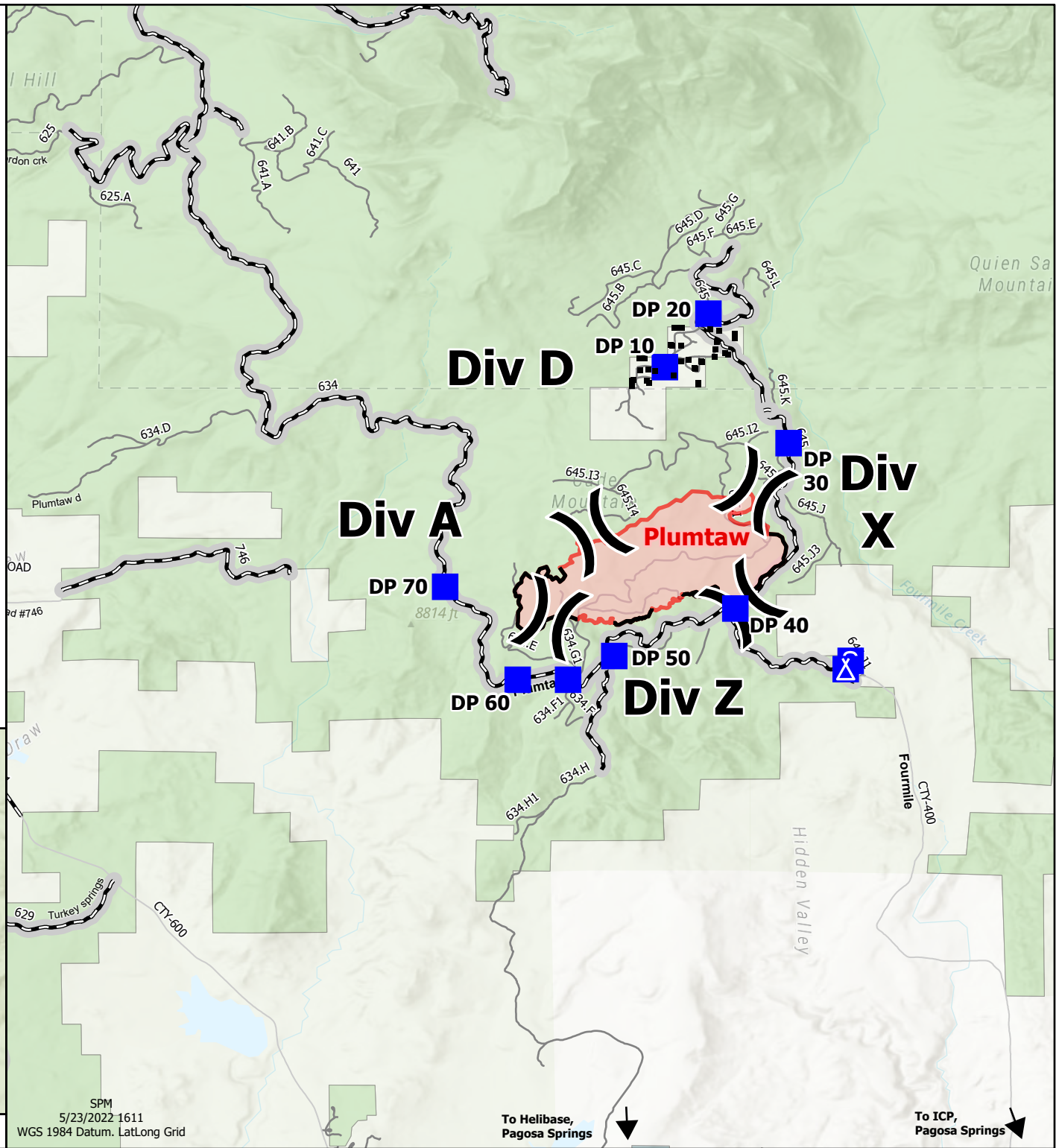
5/24/2022

721 acres at 5/21/2022 @ 1358
51% contained

- Structures
- Division Break
- Drop Point
- Camp
- Staging Area
- Wildfire Daily Fire Perimeter
- Roads Open to All Vehicles, Yearlong
- Roads Open to All Vehicles, Seasonal
- Other Public Roads
- Non-Motorized Roads
- State-Other, City, Local
- Private Lands
- National Forest



Proximity Map



SPM
5/23/2022 1611
WGS 1984 Datum, LatLong Grid

To Helibase,
Pagosa Springs

To ICP,
Pagosa Springs