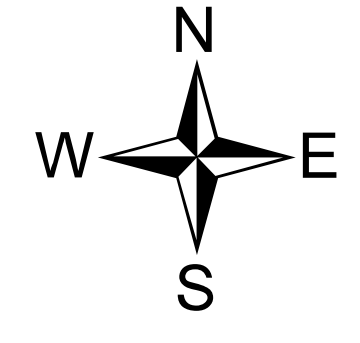


# AIR OPERATIONS

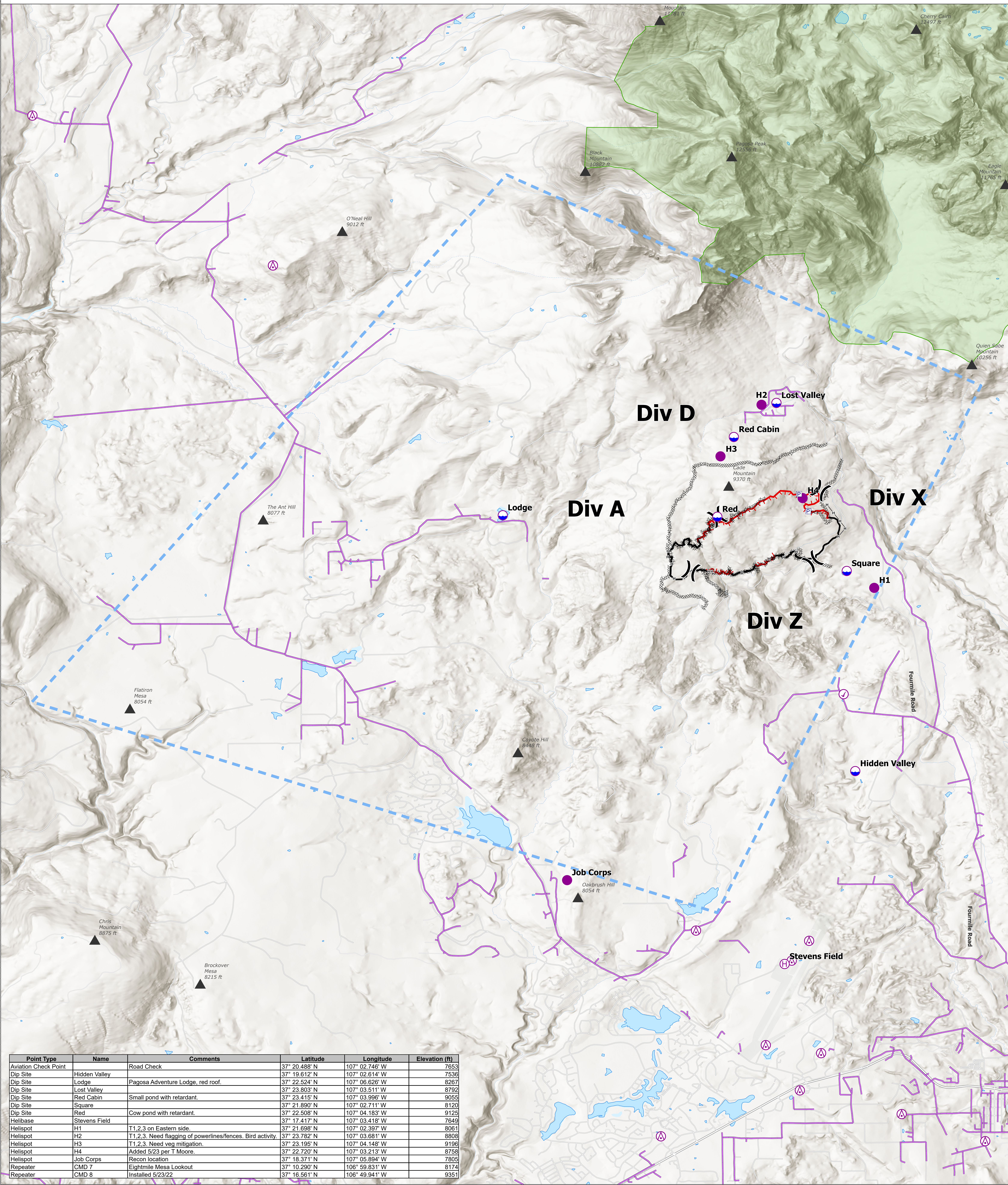
Plumtaw  
COSJF000203  
5/24/2022 DAY

721 acres at 5/21/2022 @ 1358  
51% contained

- ✓ Aviation Check Point
- ⊖ Dip Site
- Helispot
- ⊕ Helibase
- ) ( Division Break
- ⊗ Aerial Hazard
- ▲ Summit
- Temporary Flight Restriction
- ⊘ Completed Dozer Line
- ⊘ Completed Hand Line
- Contained
- Uncontained
- Overhead Distribution Lines
- Wildfire Daily Fire Perimeter
- Weminuche Wilderness



0 0.25 0.5 1 1.5 2 Miles



Point Type	Name	Comments	Latitude	Longitude	Elevation (ft)
Aviation Check Point	Hidden Valley	Road Check	37° 20.488' N	107° 02.746' W	7653
Dip Site	Hidden Valley		37° 19.612' N	107° 02.614' W	7536
Dip Site	Lodge	Pagosa Adventure Lodge, red roof.	37° 22.524' N	107° 06.626' W	8267
Dip Site	Lost Valley		37° 23.803' N	107° 03.511' W	8792
Dip Site	Red Cabin	Small pond with retardant.	37° 23.415' N	107° 03.996' W	9055
Dip Site	Square		37° 21.890' N	107° 02.711' W	8120
Dip Site	Red	Cow pond with retardant.	37° 22.508' N	107° 04.183' W	9125
Helibase	Stevens Field		37° 17.417' N	107° 03.418' W	7649
Helispot	H1	T1,2,3 on Eastern side.	37° 21.698' N	107° 02.397' W	8061
Helispot	H2	T1,2,3. Need flagging of powerlines/fences. Bird activity.	37° 23.782' N	107° 03.681' W	8808
Helispot	H3	T1,2,3. Need veg mitigation.	37° 23.195' N	107° 04.148' W	9196
Helispot	H4	Added 5/23 per T Moore.	37° 22.720' N	107° 03.213' W	8758
Helispot	Job Corps	Recon location	37° 18.371' N	107° 05.894' W	7805
Repeater	CMD 7	Eightmile Mesa Lookout	37° 10.290' N	106° 59.831' W	8174
Repeater	CMD 8	Installed 5/23/22	37° 16.561' N	106° 49.941' W	9351

KDK  
5/23/2022 2150  
Acres from Field Mapping  
WGS 1984 Datum. LatLong Grid