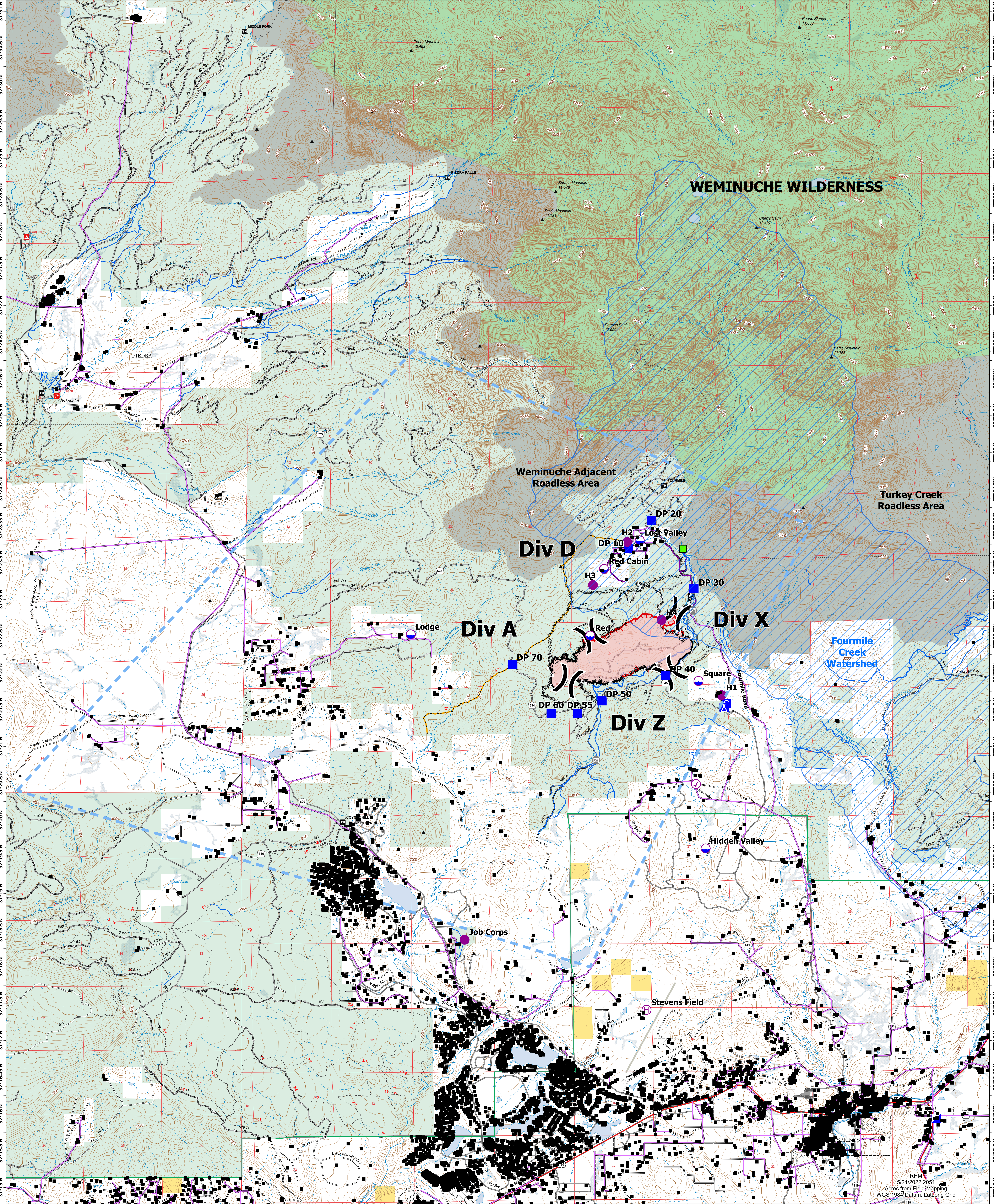
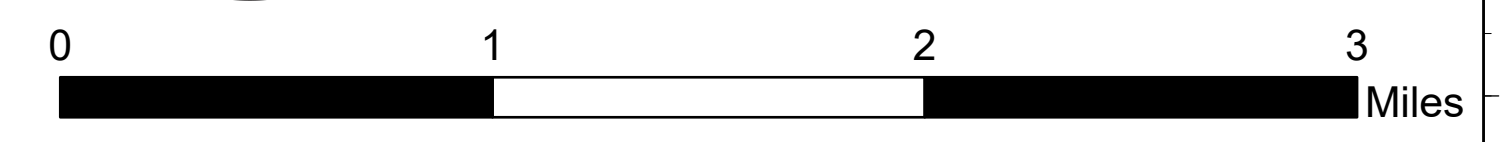
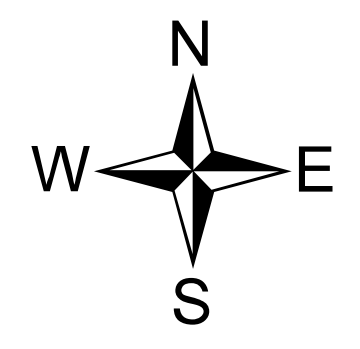


# OPERATIONS TFR

Plumtaw  
COSJF000203  
5/25/2022 DAY

721 acres as of 5/21/2022 @ 1358  
62% Contained

- |                       |                        |                              |                               |
|-----------------------|------------------------|------------------------------|-------------------------------|
| Aviation Check Point  | Drop Point             | Completed Dozer Line         | Ditch and Pipeline            |
| Dip Site              | Camp                   | Completed Hand Line          | Cade Mountain ATV Trail       |
| Helispot              | Staging Area           | Completed Road as Line       | Overhead Distribution Lines   |
| Helibase              | Gate                   | Contained                    | Underground Utility Cable     |
| Division Break        | Structures             | Uncontained                  | Wildfire Daily Fire Perimeter |
| Incident Command Post | Municipal Water Intake | Temporary Flight Restriction | Fourmile Creek Watershed      |



WEMINUCHE WILDERNESS

Weminuche Adjacent Roadless Area

Turkey Creek Roadless Area

Div D

Div A

Div X

Div Z

Fourmile Creek Watershed

Lodge

Job Corps

Hidden Valley

Stevens Field

Lost Valley

Square

RHM  
5/24/2022 2051  
Acres from Field Mapping  
WGS 1984 Datum: Lat/Long Grid