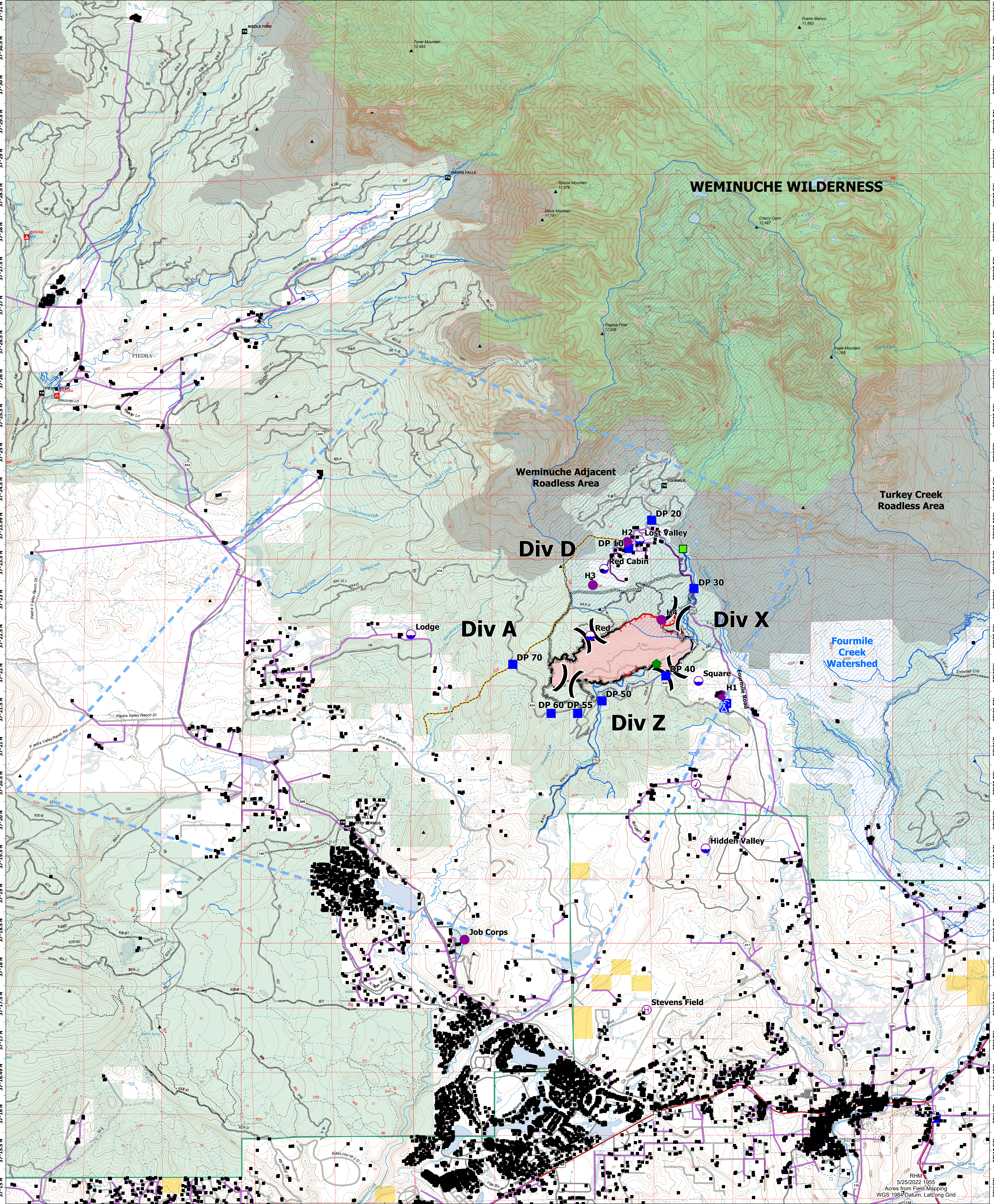
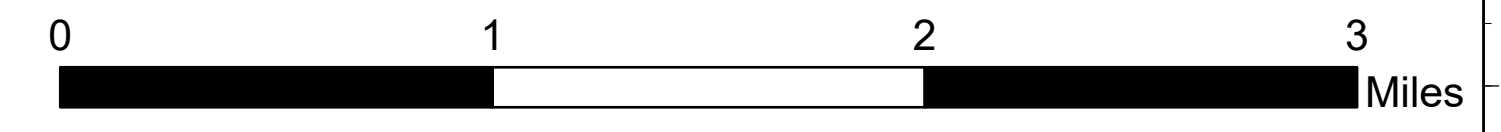
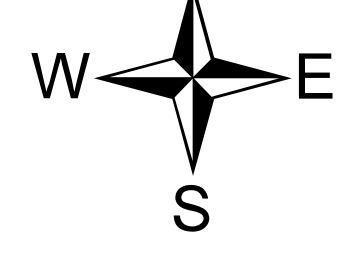


OPERATIONS TFR

Plumtaw
COSJF000203
5/26/2022 DAY

721 acres as of 5/21/2022 @ 1358
72% Contained

- | | | | |
|-----------------------|------------------------|------------------------------|-------------------------------|
| Aviation Check Point | Camp | Completed Hand Line | Overhead Distribution Lines |
| Dip Site | Staging Area | Completed Road as Line | Underground Utility Cable |
| Helispot | Gate | Contained | Wildfire Daily Fire Perimeter |
| Helibase | Repair Point | Uncontained | Fourmile Creek Watershed |
| Division Break | Structures | Temporary Flight Restriction | Ditch and Pipeline |
| Incident Command Post | Municipal Water Intake | Cade Mountain ATV Trail | |
| Drop Point | Completed Dozer Line | | |



RHM
5/25/2022 1955
Acres from Field Mapping
WGS 1984 Datum, Lat/Long Grid