

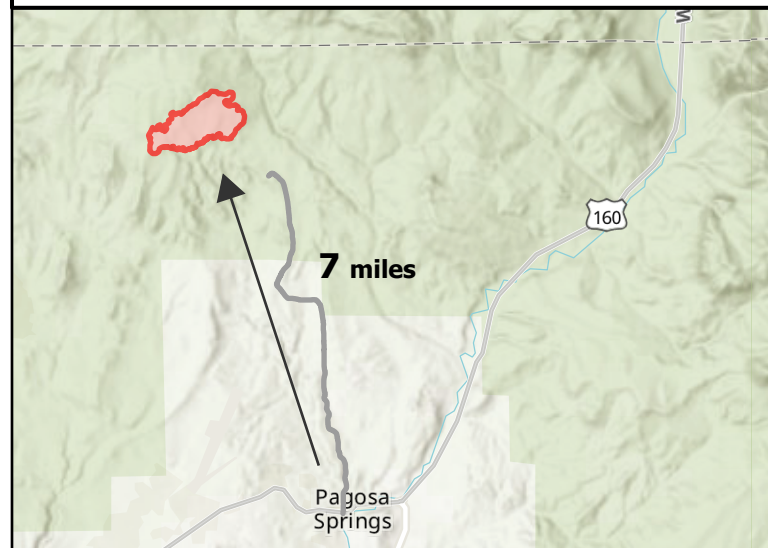
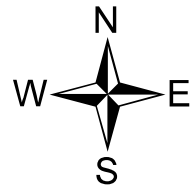
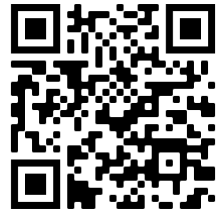
Public Information

Plumtaw
COSJF000203

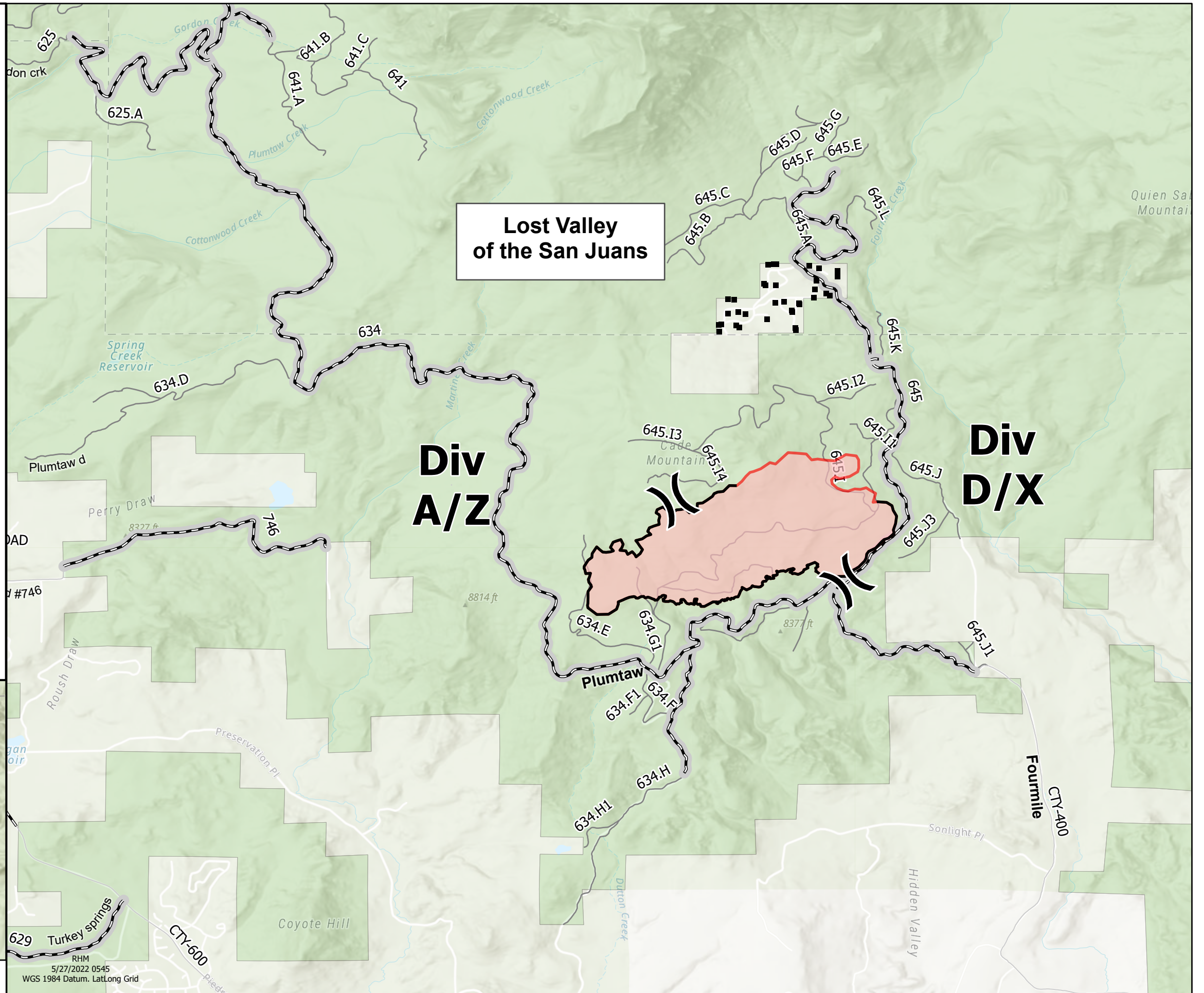
5/28/2022 - 5/30/2022

721 acres at 5/21/2022 @ 1358
77% Contained

- (X) Division Break
- Structures
- ▭ Wildfire Daily Fire Perimeter
- ▭ Private Lands
- ▭ National Forest
- Roads Open to All Vehicles, Yearlong
- Roads Open to All Vehicles, Seasonal
- Other Public Roads
- Non-Motorized Roads



Proximity Map



RHM
5/27/2022 0545
WGS 1984 Datum, Lat/Long Grid