

OPS

TW

WY-JOX-220390


8/25/2022

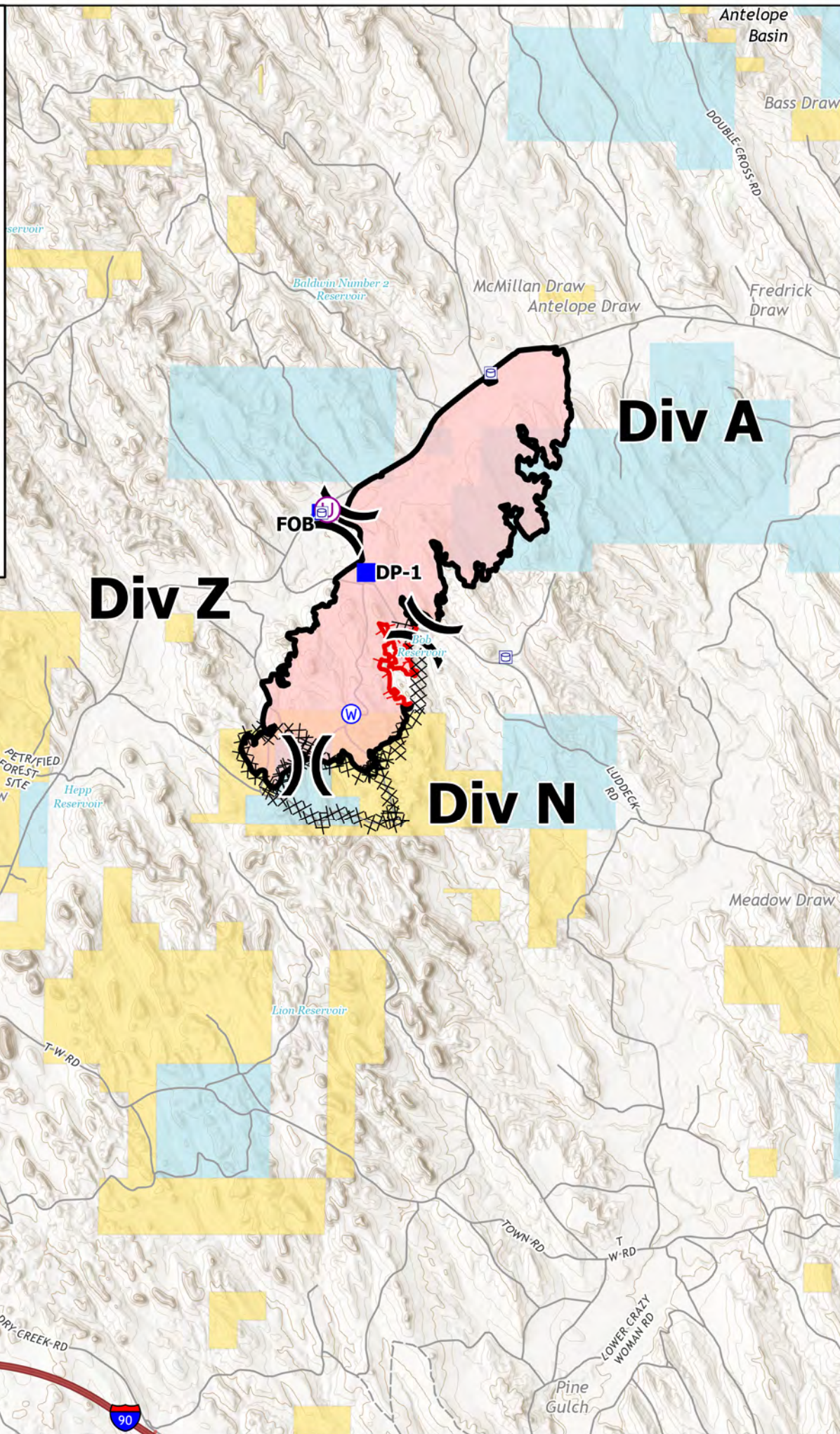
2,646 acres @1759 08/22
via satellite imagery

0 0.5 1 1.5



Miles

-  Unimproved Landing Area
-  Division Break
-  Drop Point
-  Camp
-  Staging Area
-  Water Source
-  Water Tank
-  Completed Dozer Line
-  Contained
-  Uncontained
-  Wildfire Daily Fire Perimeter
-  State
-  BLM



Div Z

Div A

Div N

FOB

DP-1

swempen
8/25/2022 0704