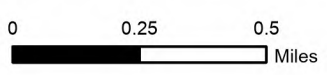


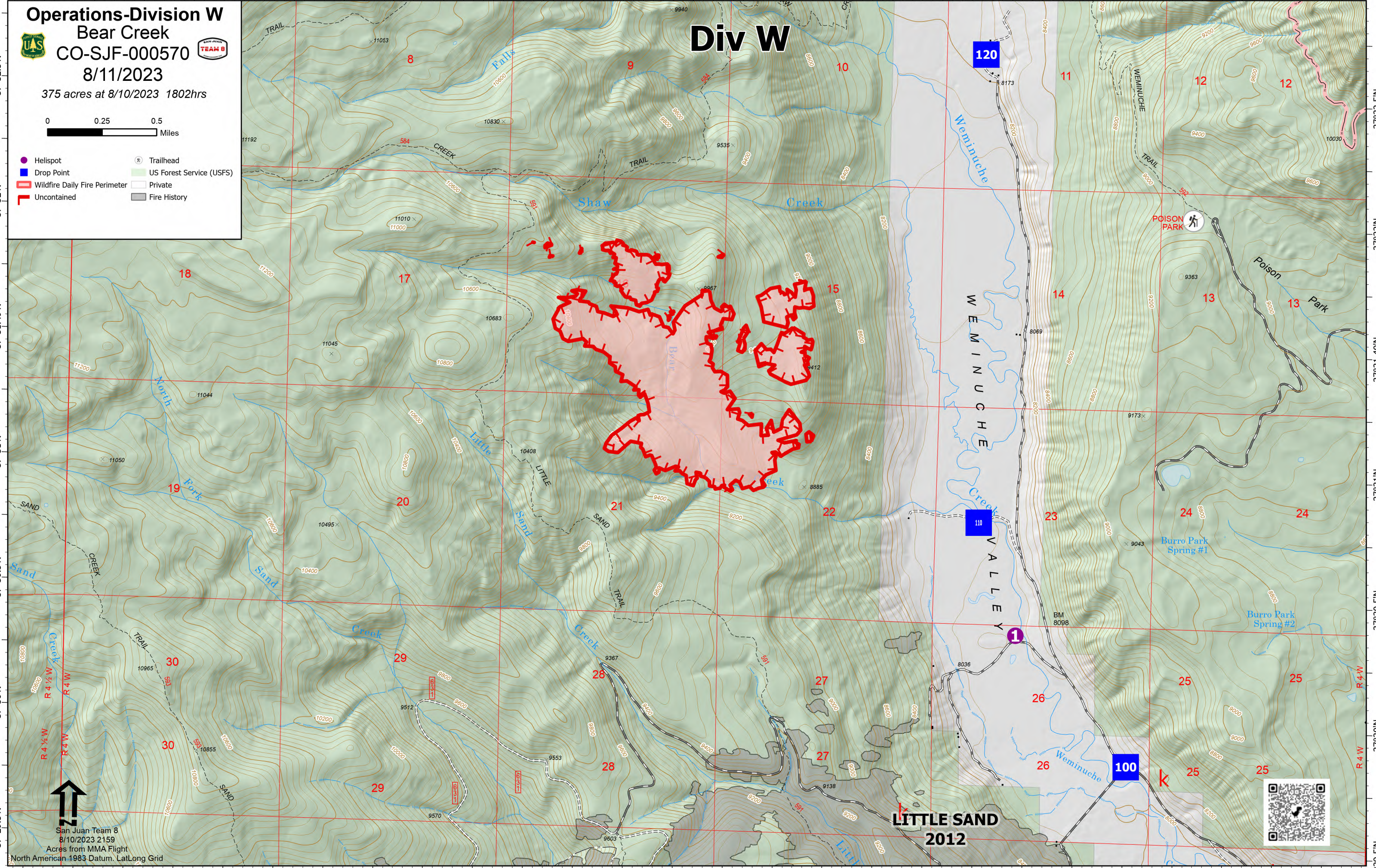
107°21.01'W 107°20.5'W 107°20'W 107°19.5'W 107°19'W 107°18.5'W 107°18'W 107°17.5'W 107°17'W 107°16.5'W 107°16'W 107°15.5'W 107°15'W 107°14.5'W

**Operations-Division W**  
**Bear Creek**  
**CO-SJF-000570**   
**8/11/2023**  
375 acres at 8/10/2023 1802hrs



-  Helispot
-  Drop Point
-  Wildfire Daily Fire Perimeter
-  Uncontained
-  Trailhead
-  US Forest Service (USFS)
-  Private
-  Fire History

# Div W



**120**

W E M I N U C H E  
V A L L E Y

**110**

**1**

**100**

**LITTLE SAND  
2012**



San Juan Team 8  
8/10/2023 2159  
Acres from MMA Flight  
North American 1983 Datum, LatLong Grid

107°21.01'W 107°20.5'W 107°20'W 107°19.5'W 107°19'W 107°18.5'W 107°18'W 107°17.5'W 107°17'W 107°16.5'W 107°16'W 107°15.5'W 107°15'W 107°14.5'W

37°32.5'N  
37°32'N  
37°31.49'N  
37°31'N  
37°30.5'N  
37°30'N  
37°29.5'N

37°32.5'N  
37°32'N  
37°31.49'N  
37°31'N  
37°30.5'N  
37°30'N  
37°29.5'N