

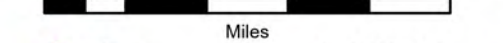
Pilot Map

Bear Creek

CO-SJF-000570

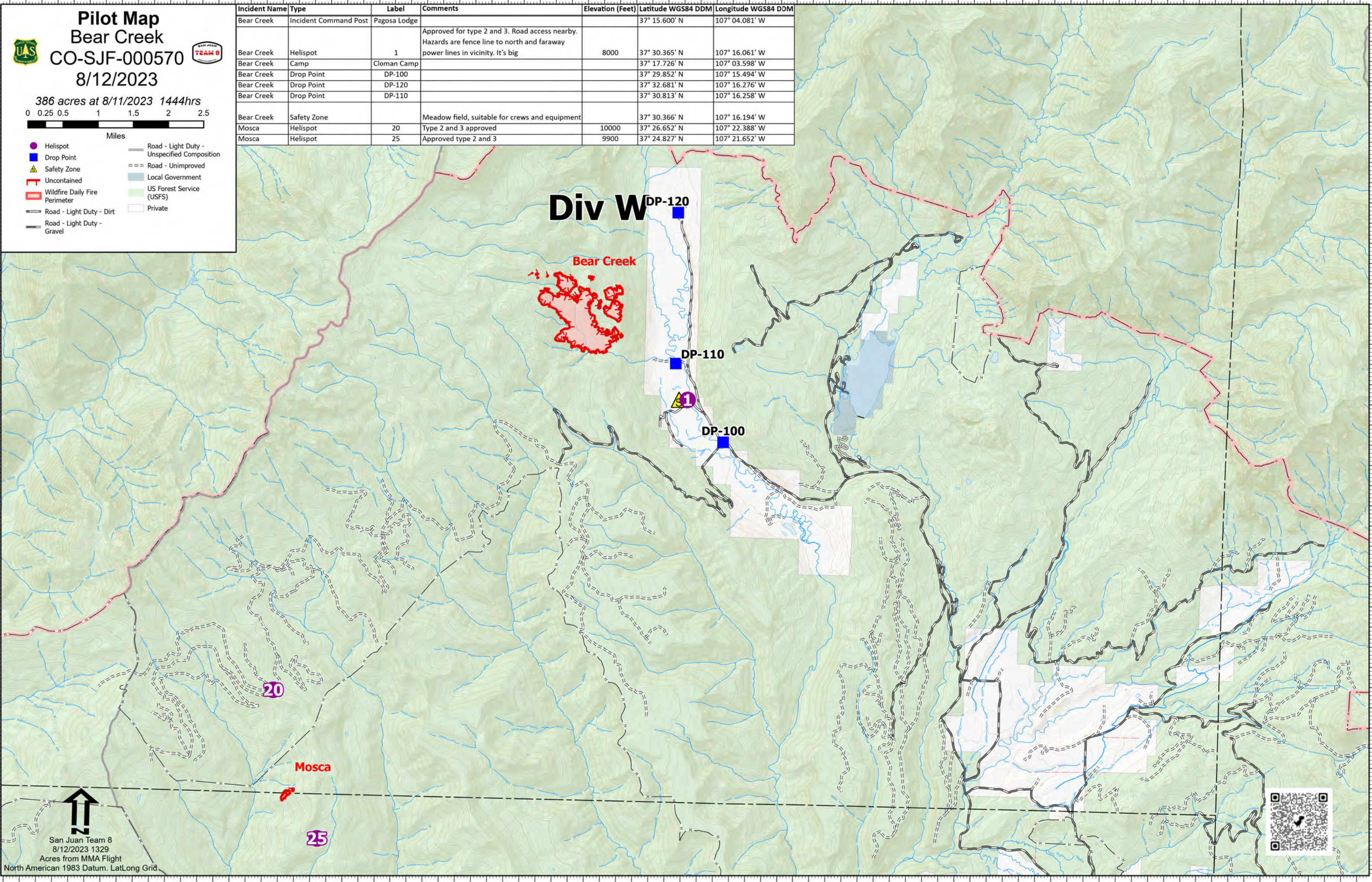
8/12/2023

386 acres at 8/11/2023 1444hrs



- Helispot
- Drop Point
- ▲ Safety Zone
- ⚠ Uncontained
- ▭ Wildfire Daily Fire Perimeter
- Road - Light Duty - Dirt
- Road - Light Duty - Gravel
- Road - Light Duty - Unspecified Composition
- - - Road - Unimproved
- ▭ Local Government
- ▭ US Forest Service (USFS)
- ▭ Private

Incident Name	Type	Label	Comments	Elevation (Feet)	Latitude WGS84 DDM	Longitude WGS84 DDM
Bear Creek	Incident Command Post	Pagosa Lodge			37° 15.600' N	107° 04.081' W
Bear Creek	Helispot	1	Approved for type 2 and 3. Road access nearby. Hazards are fence line to north and faraway power lines in vicinity. It's big	8000	37° 30.365' N	107° 16.061' W
Bear Creek	Camp	Cloman Camp			37° 17.726' N	107° 03.598' W
Bear Creek	Drop Point	DP-100			37° 29.852' N	107° 15.494' W
Bear Creek	Drop Point	DP-120			37° 32.681' N	107° 16.276' W
Bear Creek	Drop Point	DP-110			37° 30.813' N	107° 16.258' W
Bear Creek	Safety Zone		Meadow field, suitable for crews and equipment		37° 30.366' N	107° 16.194' W
Mosca	Helispot	20	Type 2 and 3 approved	10000	37° 26.652' N	107° 22.388' W
Mosca	Helispot	25	Approved type 2 and 3	9900	37° 24.827' N	107° 21.652' W



San Juan Team 8
8/12/2023 1329
Acres from MMA Flight
North American 1983 Datum. LatLong Grid

