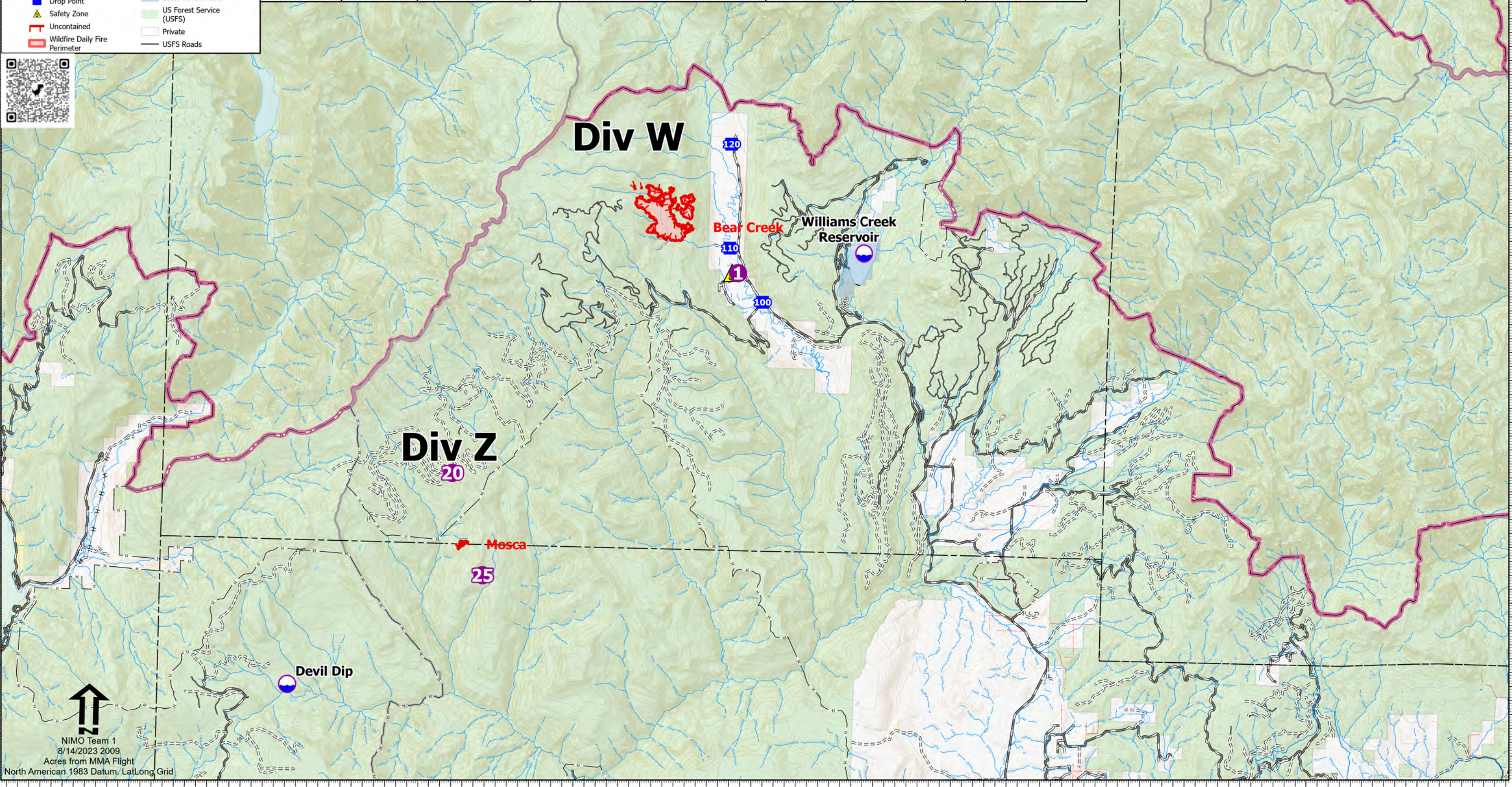


Pilot Map
Bear Creek
CO-SJF-000570
8/15/2023
 408 acres at 8/13/2023 1316hrs

Miles

- Dip Site
- Helispot
- Drop Point
- Safety Zone
- Uncontained
- Wildfire Daily Fire Perimeter
- Bureau of Reclamation (BOR)
- Local Government
- US Forest Service (USFS)
- Private
- USFS Roads

Incident Name	FC Point Type	Label	Comments	Elevation (Feet)	Latitude WGS84 DDM	Longitude WGS84 DDM
Bear Creek	Dip Site	Williams Creek Reservoir	Contact Durango Dispatch each time before using	8400	37° 30.771' N	107° 13.226' W
Bear Creek	Drop Point	DP-100			37° 29.852' N	107° 15.494' W
Bear Creek	Drop Point	DP-110			37° 30.813' N	107° 16.258' W
Bear Creek	Drop Point	DP-120			37° 32.681' N	107° 16.276' W
Bear Creek	Helispot	1	Approved for type 2 and 3. Road access nearby. Hazards are fence line to north and faraway power lines in vicinity. It's big	8000	37° 30.365' N	107° 16.061' W
Bear Creek	Safety Zone		meadow Field, suitable for crews and equipment		37° 30.366' N	107° 16.194' W
Mosca	Dip Site	Devil Dip	Contact Durango Dispatch each time before using	8810	37° 22.785' N	107° 25.996' W
Mosca	Helispot	25	Approved type 2 and 3	9900	37° 24.827' N	107° 21.652' W
Mosca	Helispot	20	Type 2 and 3 approved	10000	37° 26.652' N	107° 22.388' W



NIMO Team 1
 8/14/2023 2009
 Acres from MMA Flight
 North American 1983 Datum, LatLong Grid