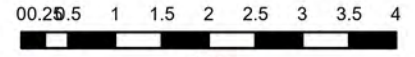
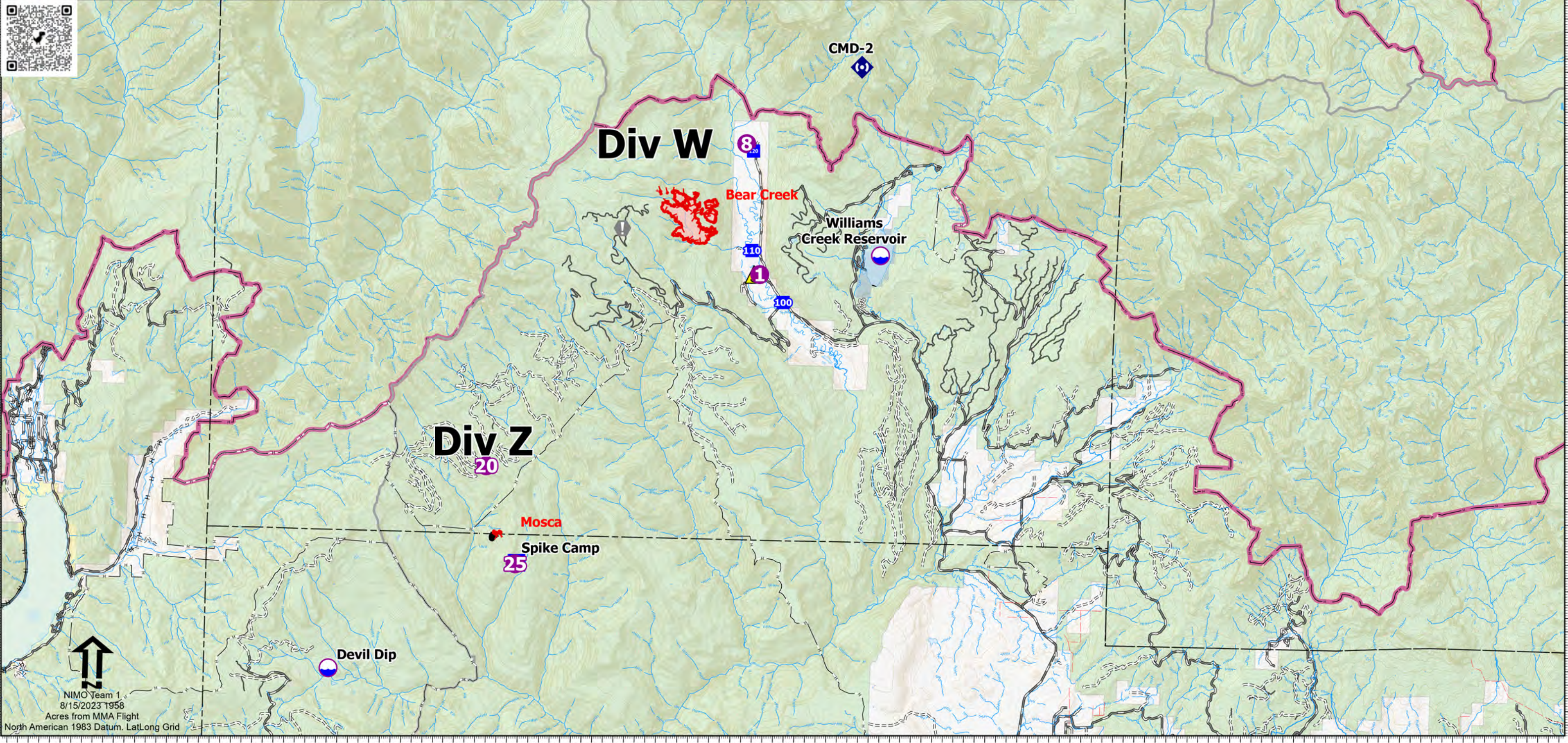


**Pilot Map-Division W**  
**Bear Creek**  
**CO-SJF-000570**  
**8/16/2023**  
 408 acres at 8/13/2023 1316hrs



- Dip Site
- Helispot
- Drop Point
- Camp
- Value at Risk
- Repeater
- Safety Zone
- Contained
- Uncontained
- Wildfire Daily Fire Perimeter
- Bureau of Reclamation (BOR)
- Local Government
- US Forest Service (USFS)
- Private
- USFS Roads

Incident Name	FC Point Type	Label	Comments	Elevation (Feet)	Latitude WGS84 DDM	Longitude WGS84 DDM
Bear Creek	Dip Site	Williams Creek Reservoir	Contact Durango Dispatch each time before using	8400	37° 30.771' N	107° 13.226' W
Bear Creek	Drop Point	100			37° 29.852' N	107° 15.494' W
Bear Creek	Drop Point	110			37° 30.813' N	107° 16.258' W
Bear Creek	Drop Point	120			37° 32.681' N	107° 16.276' W
Bear Creek	Helispot	1	Approved for type 2 and 3. Road access nearby. Hazards are fence line to north and faraway power lines in vicinity. It's big	8000	37° 30.365' N	107° 16.061' W
Bear Creek	Helispot	8	Large open meadow, minimal hazards and multiple approaches available. Approved T2 and below.	8300	37° 32.815' N	107° 16.440' W
Bear Creek	Repeater	CMD-2	4312-FCK-C093 C-12 4080-FCK-107 4150-FCK-766 INSTALLED 8/13/23 NO FIBER TAPE AT SITE	11623	37° 34.301' N	107° 13.765' W
Bear Creek	Safety Zone		meadow field, suitable for crews and equipment		37° 30.366' N	107° 16.194' W
Bear Creek	Value at Risk		SNOTEL precipitation gauge		37° 31.177' N	107° 19.320' W
Mosca	Camp	Spike Camp			37° 24.846' N	107° 21.617' W
Mosca	Dip Site	Devil Dip	Contact Durango Dispatch each time before using	8810	37° 22.785' N	107° 25.996' W
Mosca	Helispot	25	Approved type 2 and 3	9900	37° 24.827' N	107° 21.652' W
Mosca	Helispot	20	Type 2 and 3 approved	10000	37° 26.652' N	107° 22.388' W



NIMO Team 1  
 8/15/2023 1958  
 Acres from MMA Flight  
 North American 1983 Datum. LatLong Grid